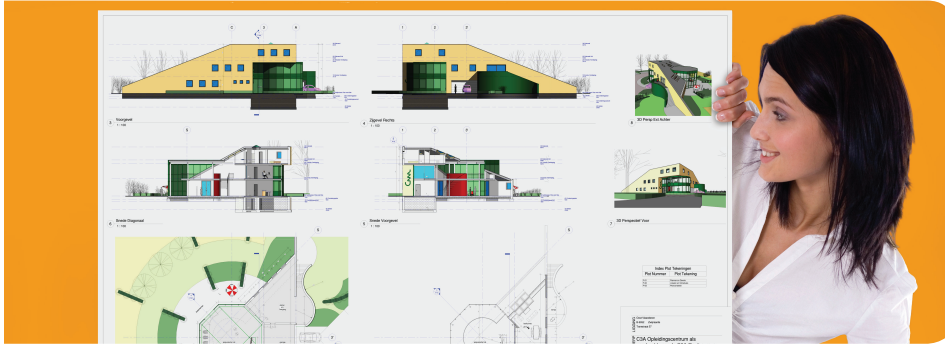


## Océ 861024

### COLOR BOND AQUEOUS INKJET MEDIA



#### PRODUCT DESCRIPTION

Océ 861024 -24 lb color inkjet bond paper is designed to work with most monochrome and color inkjet printing equipment. It is a 90 gsm in-line coated inkjet bond consisting of a bright white paper base, printable on both sides and water resistant. The inkjet coating is compatible with most wide format, thermal and piezo inkjet printers.

#### SPECIFICATIONS

##### PHYSICAL PROPERTIES\*

- Basis Weight - 24 lb.
- Caliper - > 4.1 mil
- Brightness - > 94
- Opacity - > 92
- Whiteness - 100
- pH - Acid Free

\* Target Values

##### FEATURES

- Water resistant
- Designed for monochrome and CAD color inkjet printers
- Sharp lines and solid uniform fills
- Suitable for pressure sensitive and heat activated lamination

##### BENEFITS

- Instant dry time
- Printable on both sides
- Durable

##### RECOMMENDED STORAGE CONDITIONS AND SHELF LIFE

- Temperature 55°-90° F. (20°-50° C).  
Relative Humidity 30-70%
- Shelf life-2 years when stored at proper conditions
- Allow material to stabilize to room conditions 24 hours before use

##### ENVIRONMENTAL, HEALTH & SAFETY

- No Material Safety Data Sheet required.
- Waste is suitable for recycling.

##### MAIN APPLICATIONS

- Plot maps and books
- Ideal for 3D modeling and rendering in CAD applications GIS mapping applications, or site plans.
- Can be used in laser printers, copiers and pen plotters
- Test and check plots
- Thematic maps

##### PRINTER/INK COMPATIBILITY

Océ 861024 is recommended for use in many monochrome and color printers. For best results and to learn more, call your Océ Sales Representative, or visit our website: [www.csa.canon.com](http://www.csa.canon.com)

##### PROCESSING TIPS

- Outside of the roll is side to be printed.
- Sheets-Side opposite the label is side to be printed.
- Print in a dust and dirt free environment 60°-85° F. (10°-35° C), 30-70% R.H.
- Repack opened rolls when not in use
- Check and clean cartridge prior to printing.



# Océ wide format printing CAD/inkjet media supplies

## SELECTED AVAILABLE ROLL SIZES

ROLLS ARE NOT TAPED TO CORE - NO SHEETS AVAILABLE

| ITEM NUMBER | WIDTH X LENGTH | QUANTITY PER CARTON | CORE |
|-------------|----------------|---------------------|------|
| 8610240001  | 24" x 150'     | 4 Rolls             | 2"   |
| 8610240002  | 30" x 150'     | 4 Rolls             | 2"   |
| 8610240003  | 36" x 150'     | 4 Rolls             | 2"   |
| 8610240005  | 42" x 150'     | 4 Rolls             | 2"   |
| 8610240009  | 24" x 300'     | 1 Roll              | 2"   |
| 8610240020  | 30" x 300'     | 1 Roll              | 2"   |
| 8610240004  | 36" x 300'     | 1 Roll              | 2"   |
| 8610240008  | 42" x 300'     | 1 Roll              | 2"   |
| 8610240029  | 44" x 300'     | 1 Roll              | 2"   |
| 8610240034  | 24" x 500'     | 1 Roll              | 2"   |



## Creating global leadership in printing

Canon and Océ join forces to create the global leader in the printing industry. For our customers this combines Canon and Océ technology with the support of the Océ direct sales and service organizations. Look to the new Canon-Océ combination for:

- Enterprise printing in the office and corporate printroom
- Large format printing of technical documentation, signage and display graphics
- Production printing for marketing service bureaus and graphic arts
- Business services for document process outsourcing

For information and services, visit us at:

**[www.csa.canon.com](http://www.csa.canon.com)**

**Canon**

CANON SOLUTIONS AMERICA

### Large Format Solutions

Imaging Supplies  
1800 Bruning Drive West  
Itasca, Illinois 60143-1093

1-800-323-4827 | Fax 1-800-351-0085  
email: [ocesuppliesoc@csa.canon.com](mailto:ocesuppliesoc@csa.canon.com)