



Metalik® Cut&Print Gold 074CGO

Removable Double-Sided Metallic Polyester Films

Applications

- Metallic Cut&Print creates double sided displays
- Create bright reflective lettering, logos and designs for shop windows & glass
- Ideal for retail settings, perfumeries, luxury boutiques & Christmas campaigns
- Perfect for temporary metallic point of sale promotions
- Combinations of print & CAD applications
- Also available in Metallic Silver & Rose Gold

Benefits

- Same colour effect on both sides
- Removable adhesive, perfect for wet-application
- Cuts perfectly, weeds easily
- Very smooth finish, close to mirror effect

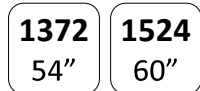
Printability:



Face Thickness without Adh:



Available widths:



Adhesion:



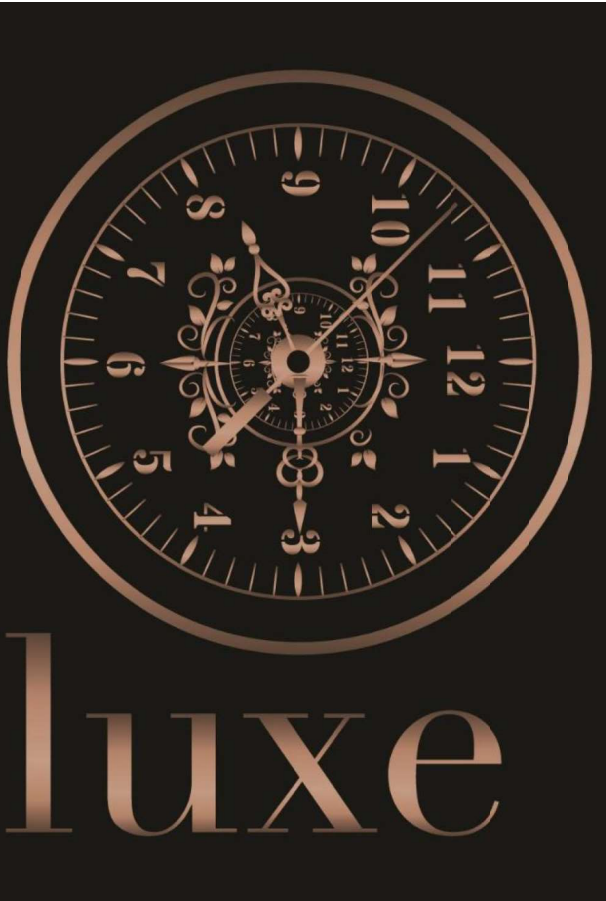
Post Printing Information for Latex & Solvent Inks:

As with all filmic media, this product must be allowed to "gas-out" after printing. This can be achieved by leaving the prints face up, ideally 24+ hours, to set, dry and harden. If unable to do this e.g. with a long print run: after printing the roll stand it vertically and loosely unwind the printed roll as much as possible, to allow air in and gases/solvents out.

Recommended Conditions:

Printroom	15°C - 30°C	30% - 65% RH
Usage	-40°C - 80°C	10% - 90% RH
Storage	10°C - 20°C	20% - 50% RH





Metalik® Cut&Print Rose Gold 074CRG

Removable Double-Sided Metallic Polyester Films

Applications

- Metallic Cut&Print creates double sided displays
- Create bright reflective lettering, logos and designs for shop windows & glass
- Ideal for retail settings, perfumeries, luxury boutiques & Christmas campaigns
- Perfect for temporary metallic point of sale promotions
- Combinations of print & CAD applications
- Also available in Metallic Silver & Gold

Benefits

- Same colour effect on both sides
- Removable adhesive, perfect for wet-application
- Cuts perfectly, weeds easily
- Very smooth finish, close to mirror effect

Post Printing Information for Latex & Solvent Inks:

As with all filmic media, this product must be allowed to “gas-out” after printing. This can be achieved by leaving the prints face up, ideally 24+ hours, to set, dry and harden. If unable to do this e.g. with a long print run: after printing the roll stand it vertically and loosely unwind the printed roll as much as possible, to allow air in and gases/solvents out.

Recommended Conditions:

Printroom	15°C - 30°C	30% - 65% RH
Usage	-40°C - 80°C	10% - 90% RH
Storage	10°C - 20°C	20% - 50% RH



Printability:

(Eco) Solvent	✓✓✓
Latex	✓✓✓
UV	✓✓✓

Face Thickness without Adh:

55 μ	2.2 mil	76 gsm
---------	------------	-----------

Available widths:

1372 54"	1524 60"
-------------	-------------

Adhesion:

APRES 24H 8 N /25mm

The information provided herein is correct to the best of our knowledge. No liability for any errors, facts or opinions is accepted. We recommend users make their own assessments to satisfy themselves as to the suitability of this product for their application. Copyright Sensitisers Group 2017



Metalik® Cut&Print silver 074CSI

Removable Double-Sided Metallic Polyester Films

Applications

- Metallic Cut&Print creates double sided displays
- Create bright reflective lettering, logos and designs for shop windows & glass
- Ideal for retail settings, perfumeries, luxury boutiques & Christmas campaigns
- Perfect for temporary metallic point of sale promotions
- Combinations of print & CAD applications
- Also available in Metallic Gold & Rose Gold

Benefits

- Same colour effect on both sides
- Removable adhesive, perfect for wet-application
- Cuts perfectly, weeds easily
- Very smooth finish, close to mirror effect

Printability:

(Eco) Solvent	✓✓✓
Latex	✓✓✓
UV	✓✓✓

Face Thickness without Adh:

55 μ	2.2 mil	76 gsm
---------	------------	-----------

Available widths:

1372 54"	1524 60"
-------------	-------------

Adhesion:

APRES24H 8 N /25mm

Post Printing Information for Latex & Solvent Inks:

As with all filmic media, this product must be allowed to "gas-out" after printing. This can be achieved by leaving the prints face up, ideally 24+ hours, to set, dry and harden. If unable to do this e.g. with a long print run: after printing the roll stand it vertically and loosely unwind the printed roll as much as possible, to allow air in and gases/solvents out.

Recommended Conditions:

Printroom	15°C - 30°C	30% - 65% RH
Usage	-40°C - 80°C	10% - 90% RH
Storage	10°C - 20°C	20% - 50% RH



Metalik® Inkjet Gold 076SGO

High-Tack Printable Metallic Polyester Films

Applications

- Suitable for permanent lamination onto display boards & other smooth surfaces
- POS decoration with or without print
- Ideal for shop-fitting, perfumeries, luxury boutiques, and Christmas campaigns
- Turn any smooth surface into metallic
- Ideal for packaging with metallic effect, our silver film is recommended for Color Logic® software
- Combine permanent print and CAD applications, for example doming
- Also available in Metallic Silver & Rose Gold

Benefits

- Shiny Silver reverse-side, bright shiny Gold front-side
- Perfect film for lamination on boards, for example Dibond
- Very smooth finish, close to mirror effect
- High-tack adhesive for strong permanent adhesion
- Can be cut and weeded

Post Printing Information for Latex & Solvent Inks:

As with all filmic media, this product must be allowed to "gas-out" after printing. This can be achieved by leaving the prints face up, ideally 24+ hours, to set, dry and harden. If unable to do this e.g. with a long print run: after printing the roll stand it vertically and loosely unwind the printed roll as much as possible, to allow air in and gases/solvents out.

Recommended Conditions:

Printroom	15°C - 30°C	30% - 65% RH
Usage	-40°C - 80°C	10% - 90% RH
Storage	10°C - 20°C	20% - 50% RH



The information provided herein is correct to the best of our knowledge. No liability for any errors, facts or opinions is accepted. We recommend users make their own assessments to satisfy themselves as to the suitability of this product for their application. Copyright Sensitisers Group 2017

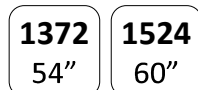
Printability:



Face Thickness without Adh:



Available widths:



Adhesion:



Metalik® Inkjet Rose Gold 076SRG

High-Tack Printable Metallic Polyester Films

Applications

- Suitable for permanent lamination onto display boards & other smooth surfaces
- POS decoration with or without print
- Ideal for shop-fitting, perfumeries, luxury boutiques, and Christmas campaigns
- Turn any smooth surface into metallic
- Ideal for packaging with metallic effect, our silver film is recommended for Color Logic® software
- Combine permanent print and CAD applications, for example doming
- Also available in Metallic Silver & Gold

Benefits

- Shiny Silver reverse-side, bright shiny Rose Gold front-side
- Perfect film for lamination on boards, for example Dibond
- Very smooth finish, close to mirror effect
- High-tack adhesive for strong permanent adhesion
- Can be cut and weeded

Post Printing Information for Latex & Solvent Inks:

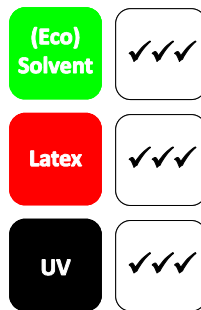
As with all filmic media, this product must be allowed to "gas-out" after printing. This can be achieved by leaving the prints face up, ideally 24+ hours, to set, dry and harden. If unable to do this e.g. with a long print run: after printing the roll stand it vertically and loosely unwind the printed roll as much as possible, to allow air in and gases/solvents out.

Recommended Conditions:

Printroom	15°C - 30°C	30% - 65% RH
Usage	-40°C - 80°C	10% - 90% RH
Storage	10°C - 20°C	20% - 50% RH



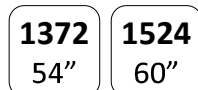
Printability:



Face Thickness without Adh:



Available widths:



Adhesion:



Metalik® Inkjet silver 076SSI**High-Tack Printable Metallic Polyester Films****Applications**

- Suitable for permanent lamination onto display boards & other smooth surfaces
- POS decoration with or without print
- Ideal for shop-fitting, perfumeries, luxury boutiques, and Christmas campaigns
- Turn any smooth surface into metallic
- Ideal for packaging with metallic effect, our silver film is recommended for Color Logic® software
- Combine permanent print and CAD applications, for example doming
- Also available in Metallic Gold & Rose Gold

Benefits

- Bright shiny Silver finish on both sides
- Perfect film for lamination on boards, for example Dibond
- Very smooth finish, close to mirror effect
- High-tack adhesive for strong permanent adhesion
- Can be cut and weeded

Post Printing Information for Latex & Solvent Inks:

As with all filmic media, this product must be allowed to "gas-out" after printing. This can be achieved by leaving the prints face up, ideally 24+ hours, to set, dry and harden. If unable to do this e.g. with a long print run: after printing the roll stand it vertically and loosely unwind the printed roll as much as possible, to allow air in and gases/solvents out.

Recommended Conditions:

Printroom	15°C - 30°C	30% - 65% RH
Usage	-40°C - 80°C	10% - 90% RH
Storage	10°C - 20°C	20% - 50% RH



The information provided herein is correct to the best of our knowledge. No liability for any errors, facts or opinions is accepted. We recommend users make their own assessments to satisfy themselves as to the suitability of this product for their application. Copyright Sensitisers Group 2017

Printability:**Face Thickness without Adh:**

55 μ	2.2 mil	76 gsm
----------------	-------------------	------------------

Available widths:

1372 54"	1524 60"
--------------------	--------------------

Adhesion:

AFTER 24H 25+ N /25mm

Xacte 130 130SSRP

Satin Repositionable Polyester Film

Applications

- Wall covering, posters, stickers
- Glass, shop windows, POS
- Furniture customisation

Benefits

- Sticks on almost all smooth or slightly textured surfaces
- Can easily be repositioned several times, perfect stability
- Unique adhesive technology for dry and bubble free application
- Excellent removability up to 6 months on most surfaces
- Antistatic treatment and anti-curl backing liner
- Note: this film should not be applied wet

Post Printing Information for Latex & Solvent Inks:

As with all filmic media, this product must be allowed to "gas-out" after printing. This can be achieved by leaving the prints face up, ideally 24 hours, to set and harden the unique scratch resistant properties. If unable to do this e.g. with a long print run, after printing the roll stand it vertically and loosely unwind as much as possible, to allow air in and gases out.

Printability:



Thickness:

85 μ	3.3 mil	277 gsm
---------	------------	------------

Available widths:

914 36"	1372 54"
------------	-------------

Recommended Conditions:

Printroom	15°C - 30°C	30% - 65% RH
Usage	-40°C - 80°C	10% - 90% RH
Storage	10°C - 20°C	20% - 50% RH



Opaline Light 153 153SBB

Budget Matt Backlight Polyester Film

Applications

- Lightboxes
- Backlit applications indoor and outdoor

Benefits

- Cost effective matt backlit material for front print
- Optimum day/night performance
- Fast dry for improved workflow
- Weather resistant for outdoor displays
- Antistatic treatment avoids attracting dust and slipping in the printer

Post Printing Information for Latex & Solvent Inks:

As with all filmic media, this product must be allowed to "gas-out" after printing. This can be achieved by leaving the prints face up, ideally 24 hours, to set and harden the unique scratch resistant properties. If unable to do this e.g. with a long print run, after printing the roll stand it vertically and loosely unwind as much as possible, to allow air in and gases out.

Printability:

(Eco) Solvent	✓✓✓
Latex	✓✓✓
UV	✓✓✓

Thickness:

153 μ	6.0 mil	220 gsm
----------	------------	------------

Available widths:

914 36"	1270 50"	1524 60"
------------	-------------	-------------

Recommended Conditions:

Printroom	15°C - 30°C	30% - 65% RH
Usage	-40°C - 80°C	10% - 90% RH
Storage	10°C - 20°C	20% - 50% RH



Classic Gloss 155^{155SGL} Gloss Lightblock Roll-Up Polyester Film

Applications

- Roller banner displays

Benefits

- Premium roller banner material – grey back, 98% opacity
- High gloss bright-white front surface
- Optimum ink adhesion
- Scratch and water resistant
- Antistatic treatment avoids attracting dust and slipping in the printer
- Stiff, perfect flatness

Post Printing Information for Latex & Solvent Inks:

As with all filmic media, this product must be allowed to “gas-out” after printing.

This can be achieved by leaving the prints face up, ideally 24 hours, to set and harden the unique scratch resistant properties.

If unable to do this e.g. with a long print run, after printing the roll stand it vertically and loosely unwind as much as possible, to allow air in and gases out.

Printability:



Thickness:

155 μ	6.1 mil	225 gsm
----------	------------	------------

Available widths:

914 36"	1067 42"	1270 50"
------------	-------------	-------------

Recommended Conditions:

Printroom	15°C - 30°C	30% - 65% RH
Usage	-40°C - 80°C	10% - 90% RH
Storage	10°C - 20°C	20% - 50% RH



* from 3rd Gen HP or later

The information provided herein is correct to the best of our knowledge. No liability for any errors, facts or opinions is accepted. We recommend users make their own assessments to satisfy themselves as to the suitability of this product for their application. Copyright Sensitizers Group 2016

Classic Matt 165 165SML

Matt Lightblock Roll-Up Polyester Film

Applications

- Roll-up displays

Benefits

- Premium roll-up material - grey back, 98% opacity
- Anti-reflective, matt, bright-white front surface
- Optimum ink adhesion, fast drying
- Scratch and water resistant
- Antistatic treatment avoids attracting dust and slipping in the printer
- Stiff, perfect flatness

Post Printing Information for Latex & Solvent Inks:

As with all filmic media, this product must be allowed to "gas-out" after printing.

This can be achieved by leaving the prints face up, ideally 24 hours, to set and harden the unique scratch resistant properties.

If unable to do this e.g. with a long print run, after printing the roll stand it vertically and loosely unwind as much as possible, to allow air in and gases out.

Printability:

(Eco) Solvent	✓✓✓
Latex	✓✓✓
UV	✓✓✓

Thickness:

165 μ	6.5 mil	234 gsm
----------	------------	------------

Available widths:

914 36"	1067 42"	1270 50"
------------	-------------	-------------

Recommended Conditions:

Printroom	15°C - 30°C	30% - 65% RH
Usage	-40°C - 80°C	10% - 90% RH
Storage	10°C - 20°C	20% - 50% RH



Classic Satin 165 ^{165SSL} Satin Lightblock Roll-Up Polyester Film

Applications

- Roller banner displays

Benefits

- Budget roll-up material - grey back, 98% opacity
- Tough satin white front polyester surface
- No need to laminate for short term displays
- Stiff, perfect flatness

Post Printing Information for Latex & Solvent Inks:

As with all filmic media, this product must be allowed to "gas-out" after printing. This can be achieved by leaving the prints face up, ideally 24 hours, to set and harden the unique scratch resistant properties. If unable to do this e.g. with a long print run, after printing the roll stand it vertically and loosely unwind as much as possible, to allow air in and gases out.

Printability:

(Eco) Solvent	✓✓✓
Latex	✓✓✓
UV	✓✓✓

Thickness:

165 μ	6.5 mil	229 gsm
----------	------------	------------

Available widths:

914 36"	1067 42"	1270 50"
------------	-------------	-------------

Recommended Conditions:

Printroom	15°C - 30°C	30% - 65% RH
Usage	-40°C - 80°C	10% - 90% RH
Storage	10°C - 20°C	20% - 50% RH



The information provided herein is correct to the best of our knowledge. No liability for any errors, facts or opinions is accepted. We recommend users make their own assessments to satisfy themselves as to the suitability of this product for their application. Copyright Sensitizers Group 2016

KERNOWJET®

LATEX, SOLVENT & UV

FloorShark® 170TFG

Textured Floor Graphic Polyester Film

Applications

- Indoor floor graphic displays
- Supermarkets, shopping malls, convention centres, airports
- All smooth hard floors e.g. concrete & tiling
- Low Pile Carpet tiles

Benefits

- Unique sharkskin coating absorbs the ink & dries tough
- Eliminates the need to laminate
- Sharkskin structure gives great color gamut and high grip; R10 certified
- Easy to apply & easy to remove, does not tear into small pieces when removing
- No shrinkage - no risk of a rim of dirty adhesive forming around the print
- Ultra-tough polyester base, resists tearing, resists pallet trucks & stiletto heels



Post Printing Information for Latex & Solvent Inks:

As with all filmic media, this product must be allowed to "gas-out" after printing. This can be achieved by leaving the prints face up, ideally 24 hours, to set and harden the unique scratch resistant properties. If unable to do this e.g. with a long print run, after printing the roll stand it vertically and loosely unwind as much as possible, to allow air in and gases out.

Recommended Conditions:

Printroom	15°C - 30°C	30% - 65% RH
Usage	-40°C - 80°C	10% - 90% RH
Storage	10°C - 20°C	20% - 50% RH



The information provided herein is correct to the best of our knowledge. No liability for any errors, facts or opinions is accepted. We recommend users make their own assessments to satisfy themselves as to the suitability of this product for their application. Copyright Sensitizers Group 2017



Certified for
HP Latex Inks

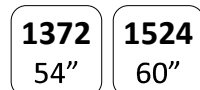
Printability:



Thickness:



Available widths:



Adhesion:



Installation Instructions

FloorShark is an ultra-tough polyester film with zero stretch, enabling very accurate panel joints.

Installation must be undertaken as follows.

Smaller panels are very quick and easy to apply without special technique but if covering a much larger area, with multiple panels several metres long, the following technique is strongly recommended.

If covering a very large area, have your designer split the panels on the shorter length e.g. if a 4m x 9m area, each panel should be 4m long plus bleed.

The floor must be clean, dry, smooth and all dust and debris removed. Lay out the entire floor graphic and apply with masking tape in the **exact** position required. Allow at least 20 cm bleed all round if covering a full floor area e.g. a plinth at a trade show and cut the excess after installation.

If applying in multiple panels, start on the left side and apply this panel first. Use 8cm overlap joints.

Create a tape hinge in the centre of the panel – two overlapping lines of masking tape required, ensuring this hinge is firmly taped to the floor.

Then tape 50% of the graphic down at the edges to ensure the graphic cannot move, flip the other 50% of the panel over and remove the liner up to almost the tape hinge.

Carefully cut the liner with a sharp scalpel and discard.

Then lift the graphic and flip it over, keeping the adhesive from contacting the floor.

Hold at circa 25 degrees to the floor and keep a firm tension, whilst a colleague uses a 15-20 cm squeegee to apply the graphic to the floor. Use light and steady pressure and each stroke **must be at 90 degrees to the run of the graphic.**

Installation is very quick, easy and incredibly accurate but only if this hinge and squeegee method is used; ensuring perfect joins in the final printed artwork.

Aqua Matt 185 ^{185CRL} Matt Lightblock Roll-Up Polyester Film

Applications

- Roll-Up
- Displays

Benefits

- Cost efficient matt lightblock display film – grey back, 98% opacity
- Fast drying, smear resistant images
- Stiff, perfect flatness

Recommended Conditions:

Printroom	15°C - 30°C	30% - 65% RH
Usage	10°C - 80°C	10% - 70% RH
Storage	10°C - 20°C	20% - 50% RH



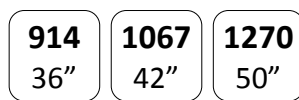
Printability:



Thickness:



Available widths:



IconiK 200 200KTB

Textured Black Polyester Film

Applications

- Roll-up
- Point of sales, displays

Benefits

- Perfect black film
- Textured Satin Jet Black with anti-static properties
- Optimum contrast with white inks
- Printable on both sides
- Weather, scratch and water resistant
- No need to laminate

Post Printing Information for Latex & Solvent Inks:

As with all filmic media, this product must be allowed to "gas-out" after printing.

This can be achieved by leaving the prints face up, ideally 24 hours, to set and harden the unique scratch resistant properties.

If unable to do this e.g. with a long print run, after printing the roll stand it vertically and loosely unwind as much as possible, to allow air in and gases out.

Printability:

(Eco) Solvent	NO
Latex	NO
UV	✓✓✓

Thickness:

195 μ	7.7 mil	260 gsm
----------	------------	------------

Available widths:

914 36"	1270 50"	1524 60"
------------	-------------	-------------

Recommended Conditions:

Printroom	15°C - 30°C	30% - 65% RH
Usage	-40°C - 80°C	10% - 90% RH
Storage	10°C - 20°C	20% - 50% RH



The information provided herein is correct to the best of our knowledge. No liability for any errors, facts or opinions is accepted. We recommend users make their own assessments to satisfy themselves as to the suitability of this product for their application. Copyright Sensitisers Group 2016

Opaline Gloss 201 201SGB

Gloss Backlight Polyester Film

Applications

- Lightboxes
- Backlit applications indoor and outdoor

Certified for
HP Latex Inks

Benefits

- Front print on high-gloss high-resolution coating
- Bright light-diffusing back-coat hides light elements
- Optimum day/night performance
- Superb gamut when back or front-lit
- Weather resistant for outdoor displays
- Scratch resistant for scrolling displays
- Antistatic treatment avoids attracting dust and slipping in the printer

Post Printing Information for Latex & Solvent Inks:

As with all filmic media, this product must be allowed to "gas-out" after printing. This can be achieved by leaving the prints face up, ideally 24 hours, to set and harden the unique scratch resistant properties. If unable to do this e.g. with a long print run, after printing the roll stand it vertically and loosely unwind as much as possible, to allow air in and gases out.

Printability:



* from 3rd Gen HP or later

Thickness:

201 μ	7.9 mil	285 gsm
----------	------------	------------

Available widths:

914 36"	1067 42"	1270 50"
1372 54"	1524 60"	

Recommended Conditions:

Printroom	15°C - 30°C	30% - 65% RH
Usage	-40°C - 80°C	10% - 90% RH
Storage	10°C - 20°C	20% - 50% RH



The information provided herein is correct to the best of our knowledge. No liability for any errors, facts or opinions is accepted. We recommend users make their own assessments to satisfy themselves as to the suitability of this product for their application. Copyright Sensitizers Group 2016

Endura 210 210SPS

Satin Display Polyester Film

Applications

- Roller banner displays
- Posters

Benefits

- Budget roll-up material, white on both sides
- Satin white front polypropylene surface
- Synthetic photo base alternative with superior smoothness
- Can be grommeted & sewn for cost effective POS solutions

Post Printing Information for Latex & Solvent Inks:

As with all filmic media, this product must be allowed to "gas-out" after printing. This can be achieved by leaving the prints face up, ideally 24 hours, to set and harden the unique scratch resistant properties. If unable to do this e.g. with a long print run, after printing the roll stand it vertically and loosely unwind as much as possible, to allow air in and gases out.

Printability:



Thickness:

210 μ	8.3 mil	240 gsm
----------	------------	------------

Available widths:

914 36"	1067 42"	1270 50"
1372 54"	1524 60"	

Recommended Conditions:

Printroom	15°C - 30°C	30% - 65% RH
Usage	-40°C - 80°C	10% - 90% RH
Storage	10°C - 20°C	20% - 50% RH



The information provided herein is correct to the best of our knowledge. No liability for any errors, facts or opinions is accepted. We recommend users make their own assessments to satisfy themselves as to the suitability of this product for their application. Copyright Sensitizers Group 2016