



## 1500 Bar Instructions



1

Gather all components together; bars at the required length, corner pieces, corner pins, glue, your print, a trimming tool and, if appropriate, a centre brace bar and corner tabs..



2

Remove the release liner covering the tape.



3

Insert the bar into the corner piece.



4

Building the shape of the frame.



5

Turn the frame upside down.



6

Align with the back of your print using the notches in the corners sections as a guide.



7

Apply pressure through the holes in the corner pieces to secure the bars to the back of your print.



8

Lift off each corner piece and store for future use.



9

Use a knife or the GOframe trimming tool to trim around the edges of your canvas.



10

Trim diagonally across each corner.



11

Trim into each corner at an angle of approximately 45°, creating tabs at the end of each bar.



12

Apply a thin bead of glue under the edge of each bar.



### 1500 Bar Instructions



13

Fold up each tab created earlier and secure to the end of each bar.



14

Lift up each bar to create the canvas edge.



15

Insert a U-shaped pin into the pre drilled holes at each corner, apply pressure to secure the corner in place.



16

For larger frames you will need to slot the corner tabs into the pre cut slots and possibly insert a centre brace bar for additional tension.



Turn Canvases Into Collages with Collage Clips from GOframe, visit [www.innovaart.com](http://www.innovaart.com) for more details



Distributed  
by Innova  
[www.innovaart.com](http://www.innovaart.com)

## Technical Specifications

### Art Cards DS 220gsm

#### Fine Art Range

Nowadays it's easy to print cards or invitations from an inkjet printer but when you want to make the very best impression – a truly memorable card for the people most important to you – Innova Art Cards are the best calling card.

Available in two sizes, these cards can be printed in either landscape or portrait layout. Use the flat page size listed below to set up your page size in Photoshop and the user defined paper size in your printer driver. Additional instructions, layout templates and icc profiles can be found at [www.innovaart.com](http://www.innovaart.com)

The appealing natural white tone and luxurious, velvety smooth matte finish of Innova Art Cards brings elegance to every message you send. The archival quality, inkjet receptive card is specially coated on both sides, allowing you to print artwork on the front and your message on the inside.

Acid and lignin free this very special inkjet receptive media has been formulated with Innova Art's most advanced coating technology ensuring that your treasured images are brought to life with bright, vivid colours, crisp, clear resolution and fine, subtle details.



The cards are pre-scored with matching envelopes, meaning you can produce mail-ready limited edition fine art cards, announcements and invitations whenever you want them, in quantities to suit you.

Full details of where to buy Innova Art Cards are available from [www.innovaart.com](http://www.innovaart.com)

Basic Weight (gsm)	Card: 220, Envelope: 120		
Paper Thickness (Microns)	Card: 325	Paper Thickness (Inches)	Card: 0.016
Base Material	Alpha Cellulose		
Coating Type	Matte (2 Side Coated)		
Surface Texture	Slightly Textured		
Whiteness (CIE)	115		
Brightness (TAPPI)	99		
OBA Content	No		
pH	7.5-9.5		
Recycleable	Yes		
Print Settings*	MK Ink, Enhanced Matte or Matte Photo Paper Settings are recommended as a starting point		
Notes	Envelope Style: Pointed Flap, Gummed; 100 Cards and Envelopes Per Box		

\*Generic ICC Profiles for selected printer models are available from the Innova Art website.

Sizes	Small: 148x229mm (Folded Size: 114x147.6mm), Large: 187x279mm (Folded Size: 140x187mm)
-------	--

#### Handling and Storage

- All digital Fine Art Papers and Canvases are fragile and need to be handled with extreme care. Try not to touch the surface of the paper, always hold the paper by the edges and wear cotton gloves if necessary.
- Return unused material to the original box and only store finished prints in archival quality packaging. If mounting or framing, use only archive grade tapes and glues.
- After printing, leave prints open to the air to fully dry (24 hours is recommended). Do not stack prints on top of each other straight away.
- Using a giclée varnish or spray will help protect your print from damage, effects of UV light and environmental attack.

#### Conditions of Use

- The recommended climate for storage of all papers is 15-20°C, relative humidity of 40-60%. Always store in original packaging, out of direct sunlight and protected from moisture.
- Do not exceed temperatures of 82°C (180°F) when dry mounting.

All recommendations are for your guidance only. These are subject to our test criteria, which remain subject to change without prior notice.



## Photoshop Set Up Instructions

### Art Cards DS 220gsm

#### Fine Art Range

##### Step 1:

Download the Photoshop templates from [www.innovaart.com/product/art-cards](http://www.innovaart.com/product/art-cards). Alternatively create a new document using the flat page dimensions listed below.

##### Step 2:

If using the downloaded template turn off or delete the layers with the Innova logos on them - these are on the 'back' of the card.

Switch on the grid View>Show>Grid (View>Grid in some versions of Photoshop), this will help with alignment later on.

##### Step 3:

Use File>Place to import your desired image file by navigating to where you have saved your image and clicking place.

##### Step 4:

Use Edit>Transform>Rotate 90° CCW (or Image>Rotate>Layer Left in some versions of Photoshop) to orientate a portrait image with the right hand side of the document. This will be your bottom edge.

If you are using a landscape format image and would like to have a horizontal card use Edit>Transform>Rotate 180° (Image>Rotate>Layer 180° in some versions of Photoshop) to orientate the bottom of your image with the top of the document. This will be your bottom edge.


##### Step 5:

Use the 'handles' at the corners of your image to roughly size it to the appropriate dimensions. Remember to hold down the shift key on your keyboard to size the whole image proportionately and to resize to the whole image slightly larger than the final required size to compensate for border edits.

Drag your image so that the focal point of your image roughly lines up with the centre of the front of your card.

Press enter to secure your changes to the imported image.

##### Step 6:

To get an equal border around your image use the select the rectangular marquee tool (.

To get a border of 5mm on all sides set the Mode (in some versions of Photoshop this is called Style) drop down menu to fixed size. You can find this in the top tool bar.

For small cards set the dimensions to Width: 137.6mm Height: 104.3mm.

For large cards set the dimensions to Width: 177.3mm Height: 129.7mm.

Click on your image once to place the marquee then move the marquee to align with the grid and get an equal border.

Right click and select Layer via Copy.

##### Step 7:

You will now have your original image on one layer and a layer above called layer 1.

Switch off the layer containing your original image.

You can also turn off the grid using View>Show>Grid (or View>Grid), this will give you a clearer view of your final artwork.

##### Step 8:

Add any additional required details to the back of the card you could use the layers containing the Innova logo as a guide.

Save your file, you are now ready to print.

##### Additional notes:

- To print the inside of the card you will need to set up an additional file and print this separately. Practice with scrap paper first to make sure you are loading the paper correctly.
- ICC profiles are available from [www.innovaart.com](http://www.innovaart.com). Or use generic print settings listed in the reverse of this sheet.
- To print your card you will need to set up a custom page size using the dimensions below.

	Folded Card Dimensions				Flat Page Dimensions			
	Width		Length		Width		Length	
Size	Inches	mm	Inches	mm	Inches	mm	Inches	mm
Small	4.5	114	5.8	148	5.8	148	9.0	229
Large	5.5	140	7.4	187	7.4	187	11.0	279



**Fine Art**  
by Innova

## Printing Set Up Instructions

### Art Cards DS 220gsm

#### Fine Art Range

The Art Cards are not standard page sizes, so to print your card, you will also need to set up a custom page size:

#### Canon Printer Set-Up:

Select **File > Print** to bring up the Print Settings box.

##### Step 1:

Click on the **Print Settings** tab.

##### Step 2:

Under the **Page Setup** tab, click on the Page size drop down menu and select > **Custom**.

##### Step 3:

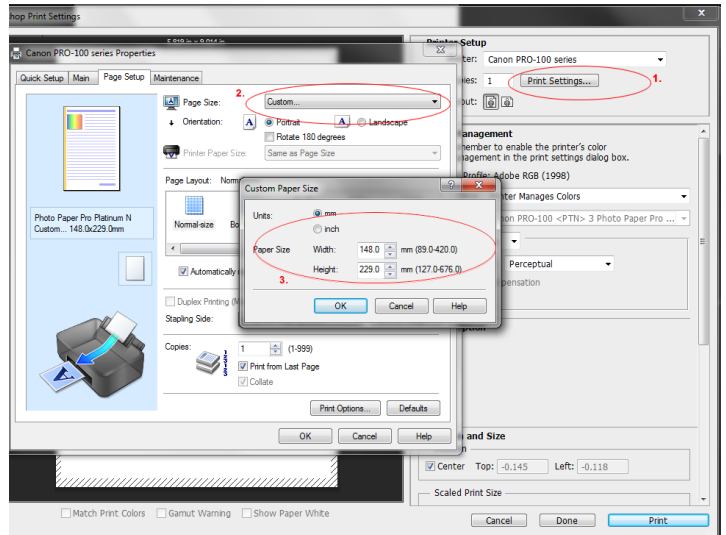
Enter the **flat** page size for either the small or large card > click **OK** to save.

##### Step 4:

You should then see your image fill the entire paper surface in the preview on the left hand side.

##### Step 5:

Select your colour management preferences as usual using **ICC profiles** from [www.innovaart.com](http://www.innovaart.com), or using generic media settings with '**Printer manages colour**'.



#### Epson Printer Set-Up:

Select **File > Print** to bring up the Print Settings box.

##### Step 1:

Click on the **Print Settings** tab.

##### Step 2:

Under the **Main** tab > Paper Settings section, click on the size drop down menu and select > **User Defined**.

##### Step 3:

Enter the **flat** page size for either the small or large card.

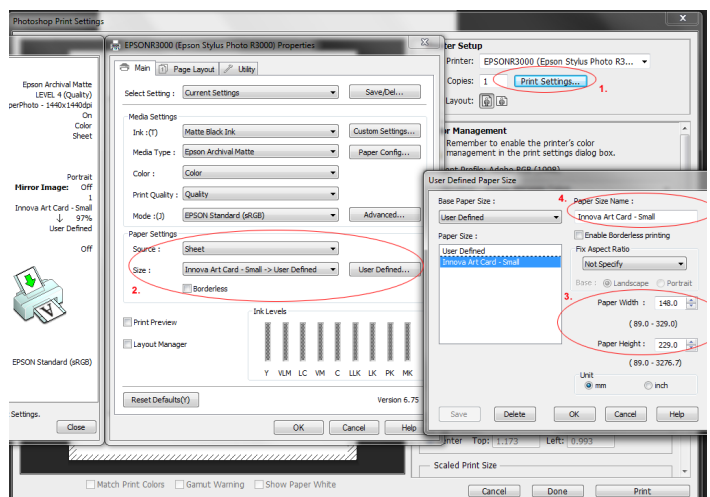
##### Step 4:

Name your user defined paper size, and click **OK** to save.

##### Step 5:

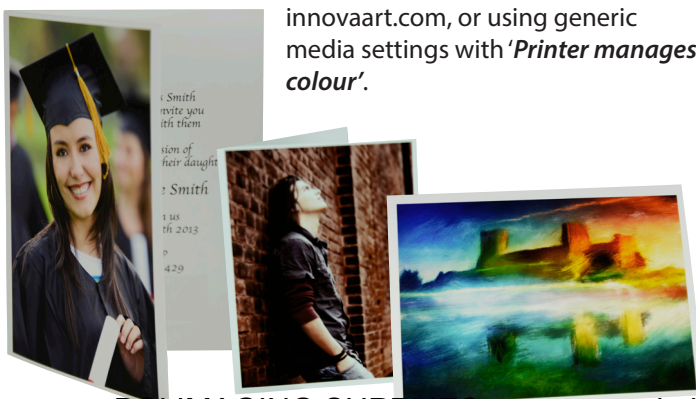
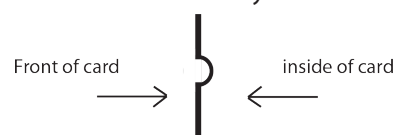
You should then see your image fill the entire paper surface in the preview on the left hand side.

**Step 6:** Select your colour management preferences as usual using **ICC profiles** from [www.innovaart.com](http://www.innovaart.com), or using generic media settings with '**Printer manages colour**'.



#### Additional notes:

- To print the inside of the card you will need to set up an additional file, or Photoshop layer and print this separately. Practice with scrap paper first to make sure you are loading the paper correctly.
- Feed the cards into your printer one at a time.
- Load the cards with the crease facing inwards to allow the card to fold correctly.



**Fine Art**  
by Innova

## Technical Specifications

### FibaPrint® White Gloss (F-type) 300gsm

#### FibaPrint® Range IFA 09

##### Product Description

High White Fourdrinier Inkjet Art Paper with Smooth Glossy Surface and revolutionary Crystal Layer technology. Crystal Layer technology creates a barrier between the fibre base and the microporous glossy coating allowing the paper to maintain excellent sharp detail, an enhanced tonal range and an exceptional D-max rating.

##### Features

- Crystal Layer Technology, unique to FibaPrint®
- High White
- Fibre Based Photo Quality
- Archival - Acid and Lignin Free
- Aqueous Pigment and Dye Ink Compatible
- Excellent Colour Gamut and Exceptional D-max
- Instant Dry

##### Applications

- Exhibition Display
- Photographic Reproduction and Restoration
- Photo Albums, Memory Books and Wedding Albums

Basic Weight (gsm)	300		
Paper Thicknesss (Microns)	325	Paper Thicknesss (Inches)	0.013
Base Material	Alpha Cellulose		
Coating Type	Microporous Gloss		
Surface Texture	Smooth		
Whiteness (CIE)	143		
Brightness (TAPPI)	113		
OBA Content	Yes		
pH	7.5-9.5		
Recyclable	Yes		
Print Settings*	PK Ink, Gloss, Semi Gloss or Lustre Photo Paper Settings are recommended as a starting point		
Notes	FibaPrint® glossy papers mark more easily, it is recommended to wear cotton gloves when handling		

\*Generic ICC Profiles for selected printer models are available from the Innova Art website.

Sheets	A4, A3, A3+, A2, 8.5x11", 11x17", 13x19", 17x22"
Rolls (15m Length)	60", 44", 36", 24", 17"

Additional Sizes are available on request, subject to order quantity.

##### Handling and Storage

- All digital Fine Art Papers and Canvases are fragile and need to be handled with extreme care. Try not to touch the surface of the paper, always hold the paper by the edges and wear cotton gloves if necessary.
- Return unused material to the original box and only store finished prints in archival quality packaging. If mounting or framing, use only archive grade tapes and glues.
- After printing, leave prints open to the air to fully dry (24 hours is recommended). Do not stack prints on top of each other straight away.
- Using a giclée varnish or spray will help protect your print from damage, effects of UV light and environmental attack.

##### Conditions of Use

- The recommended climate for storage of all papers is 15-20°C, relative humidity of 40-60%. Always store in original packaging, out of direct sunlight and protected from moisture.
- Do not exceed temperatures of 82°C (180°F) when dry mounting.

All recommendations are for your guidance only. These are subject to our test criteria, which remain subject to change without prior notice.

**FibaPrint®**  
 by Innova

## Technical Specifications

### FibaPrint® Warmtone Gloss 300gsm

#### FibaPrint® Range IFA 19

##### Product Description

Natural White Alpha Cellulose Fourdrinier Inkjet Art Paper with Smooth Glossy Surface and revolutionary Crystal Layer technology. Crystal Layer technology creates a barrier between the fibre base and the microporous glossy coating allowing the paper to maintain excellent sharp detail, an enhanced tonal range and an exceptional D-max rating.

##### Features

- Crystal Layer Technology, unique to FibaPrint®
- Natural White
- Fibre Based Photo Quality
- Archival - Acid and Lignin Free
- Aqueous Pigment and Dye Ink Compatible
- Excellent Colour Gamut and Exceptional D-Max
- Instant Dry

##### Applications

- Fine Art and Fine Photographic Reproduction
- Photographic Restoration and Limited Edition Prints
- Photo Albums, Memory Books and Wedding Albums

Basic Weight (gsm)	300		
Paper Thickness (Microns)	325	Paper Thickness (Inches)	0.013
Base Material	Alpha Cellulose		
Coating Type	Microporous Gloss		
Surface Texture	Smooth		
Whiteness (CIE)	138		
Brightness (TAPPI)	86		
OBA Content	No		
pH	7.5-9.5		
Recyclable	Yes		
Print Settings*	PK Ink, Gloss, Semi Gloss or Lustre Paper Settings are recommended as a starting point		
Notes	FibaPrint® glossy papers mark more easily, it is recommended to wear cotton gloves when handling		

\*Generic ICC Profiles for selected printer models are available from the Innova Art website.

Sheets	A4, A3, A3+, A2, 8.5x11", 11x17", 13x19", 17x22"
Rolls (15m Length)	60", 44", 36", 24", 17"

Additional Sizes are available on request, subject to order quantity.

##### Handling and Storage

- All digital Fine Art Papers and Canvases are fragile and need to be handled with extreme care. Try not to touch the surface of the paper, always hold the paper by the edges and wear cotton gloves if necessary.
- Return unused material to the original box and only store finished prints in archival quality packaging. If mounting or framing, use only archive grade tapes and glues.
- After printing, leave prints open to the air to fully dry (24 hours is recommended). Do not stack prints on top of each other straight away.
- Using a giclée varnish or spray will help protect your print from damage, effects of UV light and environmental attack.

##### Conditions of Use

- The recommended climate for storage of all papers is 15-20°C, relative humidity of 40-60%. Always store in original packaging, out of direct sunlight and protected from moisture.
- Do not exceed temperatures of 82°C (180°F) when dry mounting.

All recommendations are for your guidance only. These are subject to our test criteria, which remain subject to change without prior notice.

**FibaPrint®**  
 by Innova

## Technical Specifications

### FibaPrint® White Semi Matte 300gsm

#### FibaPrint® Range IFA 29

##### Product Description

High White Fourdrinier Inkjet Art Paper with Smooth Semi Matte Surface and revolutionary Crystal Layer technology. Crystal Layer technology creates a barrier between the fibre base and the microporous glossy coating allowing the paper to maintain excellent sharp detail, an enhanced tonal range and an exceptional D-max rating .

##### Features

- Crystal Layer Technology, unique to FibaPrint®
- High White
- Fibre Based Photo Quality
- Archival - Acid and Lignin Free
- Aqueous Pigment and Dye Ink Compatible
- Excellent Colour Gamut and Exceptional D-max
- Instant Dry

##### Applications

- Fine Art and Photographic Open and Limited Edition Prints
- Fine Art and Fine Photographic Reproduction
- Fine Photographic Restoration and Limited Edition Prints
- Photo Albums, Memory Books and Wedding Albums

Basic Weight (gsm)	300		
Paper Thickness (Microns)	325	Paper Thickness (Inches)	0.013
Base Material	Alpha Cellulose		
Coating Type	Microporous Satin		
Surface Texture	Smooth		
Whiteness (CIE)	152		
Brightness (TAPPI)	111		
OBA Content	Yes		
pH	7.5-9.5		
Recyclable	Yes		
Print Settings*	PK Ink, Semi Gloss or Lustre Photo Paper Settings are recommended as a starting point		
Notes	FibaPrint® glossy papers mark more easily, it is recommended to wear cotton gloves when handling		

\*Generic ICC Profiles for selected printer models are available from the Innova Art website.

Sheets	A4, A3, A3+, A2, 8.5x11", 11x17", 13x19", 17x22"
Rolls (15m Length)	60", 44", 36", 24", 17"

Additional Sizes are available on request, subject to order quantity.

##### Handling and Storage

- All digital Fine Art Papers and Canvases are fragile and need to be handled with extreme care. Try not to touch the surface of the paper, always hold the paper by the edges and wear cotton gloves if necessary.
- Return unused material to the original box and only store finished prints in archival quality packaging. If mounting or framing, use only archive grade tapes and glues.
- After printing, leave prints open to the air to fully dry (24 hours is recommended). Do not stack prints on top of each other straight away.
- Using a giclée varnish or spray will help protect your print from damage, effects of UV light and environmental attack.

##### Conditions of Use

- The recommended climate for storage of all papers is 15-20°C, relative humidity of 40-60%. Always store in original packaging, out of direct sunlight and protected from moisture.
- Do not exceed temperatures of 82°C (180°F) when dry mounting.

All recommendations are for your guidance only. These are subject to our test criteria, which remain subject to change without prior notice.

**FibaPrint®**  
 by Innova



## Technical Specifications

### FibaPrint® Photo Canvas Ultra Gloss 380gsm

#### FibaPrint® Range IFA 36

##### Product Description

Polycotton canvas with Ultra Glossy Surface and revolutionary Crystal Layer technology. Crystal Layer technology creates a barrier between the canvas and the microporous glossy coating allowing the surface to maintain excellent sharp detail, an enhanced tonal range and an exceptional D-max rating.

##### Features

- Crystal Layer Technology, unique to FibaPrint®
- High White
- Flexible Microporous Coating Ideal For Stretching
- Archival - Acid and Lignin Free
- Aqueous Pigment and Dye Ink Compatible
- Excellent Colour Gamut and Exceptional D-max
- Instant Dry and Water Resistant

##### Applications

- Fine Art and Photographic Open and Limited Edition Prints
- Stretched Canvases, Gallery Wraps
- Compatible with JetMaster Photo Wrap framing system

Basic Weight (gsm)	380		
Canvas Thickness (Microns)	450	Canvas Thickness (Inches)	0.018
Base Material	Polycotton		
Coating Type	Microporous Gloss		
Surface Texture	Canvas		
Whiteness (CIE)	85		
Brightness (TAPPI)	86		
OBA Content	No		
pH	7.5-9.5		
Recyclable	Yes		
Print Settings*	PK Ink, Gloss or Stain Canvas , Premium Lustre Photo Paper Settings are recommended as a starting point		
Notes			

\*Generic ICC Profiles for selected printer models are available from the Innova Art website.

Sheets	A4, A3
Rolls (15m Length)	60", 44", 36", 24", 17"

Additional Sizes are available on request, subject to order quantity.

##### Handling and Storage

- All digital Fine Art Papers and Canvases are fragile and need to be handled with extreme care. Try not to touch the surface of the paper, always hold the paper by the edges and wear cotton gloves if necessary.
- Return unused material to the original box and only store finished prints in archival quality packaging. If mounting or framing, use only archive grade tapes and glues.
- After printing, leave prints open to the air to fully dry (24 hours is recommended). Do not stack prints on top of each other straight away.
- Using a giclée varnish or spray will help protect your print from damage, effects of UV light and environmental attack.

##### Conditions of Use

- The recommended climate for storage of all papers is 15-20°C, relative humidity of 40-60%. Always store in original packaging, out of direct sunlight and protected from moisture.
- Do not exceed temperatures of 82°C (180°F) when dry mounting.

All recommendations are for your guidance only. These are subject to our test criteria, which remain subject to change without prior notice.

**FibaPrint®**  
 by Innova

## Technical Specifications

### FibaPrint® White Matte 280gsm

### FibaPrint® Range IFA 39

#### Product Description

High White Fourdrinier Inkjet Art Paper with Ultra Smooth Matte Surface and revolutionary Crystal Layer technology. Crystal Layer technology creates a barrier between the fibre base and the matte coating allowing the paper to maintain excellent sharp detail, an enhanced tonal range and an exceptional D-max rating.

#### Features

- Crystal Layer Technology, unique to FibaPrint®
- High White
- Fibre Based Photo Quality
- Archival - Acid and Lignin Free
- Aqueous Pigment and Dye Ink Compatible
- Excellent Colour Gamut and Exceptional D-max
- Instant Dry

#### Applications

- Fine Art and Photographic Open and Limited Edition Prints
- Fine Art and Fine Photographic Reproduction and Restoration
- Art and Photo Portfolios
- Photo Albums, Memory Books and Wedding Albums
- Glass Free Framing

Basic Weight (gsm)	280		
Paper Thickness (Microns)	310	Paper Thickness (Inches)	0.012
Base Material	Alpha Cellulose		
Coating Type	Matte		
Surface Texture	Ultra Smooth		
Whiteness (CIE)	138		
Brightness (TAPPI)	111		
OBA Content	Yes		
pH	7.5-9.5		
Recyclable	Yes		
Print Settings*	MK Ink, Archival Matte or Matte Photo Paper Settings are recommended as a starting point		
Notes			

\*Generic ICC Profiles for selected printer models are available from the Innova Art website.

Sheets	A4, A3, A3+, A2, 8.5x11", 11x17", 13x19", 17x22"
Rolls (15m Length)	60", 44", 36", 24", 17"

Additional Sizes are available on request, subject to order quantity.

#### Handling and Storage

- All digital Fine Art Papers and Canvases are fragile and need to be handled with extreme care. Try not to touch the surface of the paper, always hold the paper by the edges and wear cotton gloves if necessary.
- Return unused material to the original box and only store finished prints in archival quality packaging. If mounting or framing, use only archive grade tapes and glues.
- After printing, leave prints open to the air to fully dry (24 hours is recommended). Do not stack prints on top of each other straight away.
- Using a giclée varnish or spray will help protect your print from damage, effects of UV light and environmental attack.

#### Conditions of Use

- The recommended climate for storage of all papers is 15-20°C, relative humidity of 40-60%. Always store in original packaging, out of direct sunlight and protected from moisture.
- Do not exceed temperatures of 82°C (180°F) when dry mounting.

All recommendations are for your guidance only. These are subject to our test criteria, which remain subject to change without prior notice.

**FibaPrint®**  
by Innova

## Technical Specifications

### FibaPrint® Ultra Smooth Gloss 325gsm

#### FibaPrint® Range IFA 40

##### Product Description

High White Fourdrinier Inkjet Art Paper with Ultra Smooth Glossy Surface and revolutionary Crystal Layer technology. Crystal Layer technology creates a barrier between the fibre base and the microporous glossy coating allowing the paper to maintain excellent sharp detail, an enhanced tonal range and a D-max rating up to 2.7.

##### Features

- Crystal Layer Technology, unique to FibaPrint®
- High White
- Fibre Based Photo Quality
- Archival - Acid and Lignin Free
- Aqueous Pigment and Dye Ink Compatible
- Excellent Colour Gamut and Exceptional D-max
- Instant Dry

##### Applications

- Fine Art and Photographic Open and Limited Edition Prints
- Fine Art and Fine Photographic Reproduction and Restoration
- Art and Photo Portfolios
- Greeting Cards and Postcards

Basic Weight (gsm)	325		
Paper Thickness (Microns)	325	Paper Thickness (Inches)	0.013
Base Material	Alpha Cellulose		
Coating Type	Microporous Gloss		
Surface Texture	Ultra Smooth		
Whiteness (CIE)	152		
Brightness (TAPPI)	111		
OBA Content	Yes		
pH	7.5-9.5		
Recyclable	Yes		
Print Settings*	PK Ink, Gloss or Semi Gloss Photo Paper Settings are recommended as a starting point		
Notes	FibaPrint® glossy papers mark more easily, it is recommended to wear cotton gloves when handling		

\*Generic ICC Profiles for selected printer models are available from the Innova Art website.

Sheets	A4, A3, A3+, A2, 8.5x11", 11x17", 13x19", 17x22"
Rolls (15m Length)	60", 44", 36", 24", 17"

Additional Sizes are available on request, subject to order quantity.

##### Handling and Storage

- All digital Fine Art Papers and Canvases are fragile and need to be handled with extreme care. Try not to touch the surface of the paper, always hold the paper by the edges and wear cotton gloves if necessary.
- Return unused material to the original box and only store finished prints in archival quality packaging. If mounting or framing, use only archive grade tapes and glues.
- After printing, leave prints open to the air to fully dry (24 hours is recommended). Do not stack prints on top of each other straight away.
- Using a giclée varnish or spray will help protect your print from damage, effects of UV light and environmental attack.

##### Conditions of Use

- The recommended climate for storage of all papers is 15-20°C, relative humidity of 40-60%. Always store in original packaging, out of direct sunlight and protected from moisture.
- Do not exceed temperatures of 82°C (180°F) when dry mounting.

All recommendations are for your guidance only. These are subject to our test criteria, which remain subject to change without prior notice.

**FibaPrint®**  
 by Innova

## Technical Specifications

### FibaPrint® Ultra Smooth Gloss 250gsm

#### FibaPrint® Range IFA 41

##### Product Description

High White Fourdrinier Inkjet Art Paper with Ultra Smooth Glossy Surface and revolutionary Crystal Layer technology. Crystal Layer technology creates a barrier between the fibre base and the microporous glossy coating allowing the paper to maintain excellent sharp detail, an enhanced tonal range and a D-max rating up to 2.7.

##### Features

- Crystal Layer Technology, unique to FibaPrint®
- High White
- Fibre Based Photo Quality
- Archival - Acid and Lignin Free
- Aqueous Pigment and Dye Ink Compatible
- Excellent Colour Gamut and Exceptional D-max
- Instant Dry

##### Applications

- Fine Art and Photographic Open and Limited Edition Prints
- Fine Art and Fine Photographic Reproduction and Restoration
- Art and Photo Portfolios
- Photo Albums, Memory Books and Wedding Albums

Basic Weight (gsm)	250		
Paper Thickness (Microns)	300	Paper Thickness (Inches)	0.012
Base Material	Alpha Cellulose		
Coating Type	Microporous Gloss		
Surface Texture	Ultra Smooth		
Whiteness (CIE)	152		
Brightness (TAPPI)	111		
OBA Content	Yes		
pH	7.5-9.5		
Recyclable	Yes		
Print Settings*	PK Ink, Gloss or Semi Gloss Photo Paper Settings are recommended as a starting point		
Notes	FibaPrint® glossy papers mark more easily, it is recommended to wear cotton gloves when handling		

\*Generic ICC Profiles for selected printer models are available from the Innova Art website.

Sheets	A4, A3, A3+, A2, 8.5x11", 11x17", 13x19", 17x22"
Rolls (15m Length)	60", 44", 36", 24", 17"

Additional Sizes are available on request, subject to order quantity.

##### Handling and Storage

- All digital Fine Art Papers and Canvases are fragile and need to be handled with extreme care. Try not to touch the surface of the paper, always hold the paper by the edges and wear cotton gloves if necessary.
- Return unused material to the original box and only store finished prints in archival quality packaging. If mounting or framing, use only archive grade tapes and glues.
- After printing, leave prints open to the air to fully dry (24 hours is recommended). Do not stack prints on top of each other straight away.
- Using a giclée varnish or spray will help protect your print from damage, effects of UV light and environmental attack.

##### Conditions of Use

- The recommended climate for storage of all papers is 15-20°C, relative humidity of 40-60%. Always store in original packaging, out of direct sunlight and protected from moisture.
- Do not exceed temperatures of 82°C (180°F) when dry mounting.

All recommendations are for your guidance only. These are subject to our test criteria, which remain subject to change without prior notice.

**FibaPrint®**  
 by Innova



## Technical Specifications

### FibaPrint® White Semi Matte 250gsm

#### FibaPrint® Range IFA 42

##### Product Description

High White Fourdrinier Inkjet Art Paper with Ultra Smooth Semi Matte Surface and revolutionary Crystal Layer technology. Crystal Layer technology creates a barrier between the fibre base and the microporous glossy coating allowing the paper to maintain excellent sharp detail, an enhanced tonal range and an exceptional D-max rating.

##### Features

- Crystal Layer Technology, unique to FibaPrint®
- High White
- Fibre Based Photo Quality
- Archival - Acid and Lignin Free
- Aqueous Pigment and Dye Ink Compatible
- Excellent Colour Gamut and Exceptional D-max
- Instant Dry

##### Applications

- Fine Art and Fine Photographic Reproduction
- Fine Photographic Restoration and Limited Edition Prints
- Photo Albums, Memory Books and Wedding Albums

Basic Weight (gsm)	250		
Paper Thickness (Microns)	285	Paper Thickness (Inches)	0.011
Base Material	Alpha Cellulose		
Coating Type	Microporous Satin		
Surface Texture	Ultra Smooth		
Whiteness (CIE)	152		
Brightness (TAPPI)	111		
OBA Content	Yes		
pH	7.5-9.5		
Recyclable	Yes		
Print Settings*	PK Ink, Semi Gloss or Lustre Photo Paper Settings are recommended as a starting point		
Notes	FibaPrint® glossy papers mark more easily, it is recommended to wear cotton gloves when handling		

\*Generic ICC Profiles for selected printer models are available from the Innova Art website.

Sheets	A4, A3, A3+, A2, 8.5x11", 11x17", 13x19", 17x22"
Rolls (15m Length)	60", 44", 36", 24", 17"

Additional Sizes are available on request, subject to order quantity.

##### Handling and Storage

- All digital Fine Art Papers and Canvases are fragile and need to be handled with extreme care. Try not to touch the surface of the paper, always hold the paper by the edges and wear cotton gloves if necessary.
- Return unused material to the original box and only store finished prints in archival quality packaging. If mounting or framing, use only archive grade tapes and glues.
- After printing, leave prints open to the air to fully dry (24 hours is recommended). Do not stack prints on top of each other straight away.
- Using a giclée varnish or spray will help protect your print from damage, effects of UV light and environmental attack.

##### Conditions of Use

- The recommended climate for storage of all papers is 15-20°C, relative humidity of 40-60%. Always store in original packaging, out of direct sunlight and protected from moisture.
- Do not exceed temperatures of 82°C (180°F) when dry mounting.

All recommendations are for your guidance only. These are subject to our test criteria, which remain subject to change without prior notice.

**FibaPrint®**  
 by Innova

## Technical Specifications

### FibaPrint® Warm Cotton Gloss 335gsm

#### FibaPrint® Range IFA 45

##### Product Description

Natural White 100% Cotton Fourdrinier Inkjet Art Paper with Smooth Glossy Surface and revolutionary Crystal Layer technology. Crystal Layer technology creates a barrier between the fibre base and the microporous glossy coating allowing the paper to maintain excellent sharp detail, an enhanced tonal range and an exceptional D-max rating.

##### Features

- Crystal Layer Technology, unique to FibaPrint®
- Natural White
- Fibre Based Photo Quality
- Archival - Acid and Lignin Free
- Aqueous Pigment and Dye Ink Compatible
- Excellent Colour Gamut and Exceptional D-Max
- Instant Dry

##### Applications

- Fine Art and Photographic Open and Limited Edition Prints
- Fine Art and Fine Photographic Reproduction and Restoration
- Art and Photo Portfolios
- Photo Albums, Memory Books and Wedding Albums
- Greeting Cards and Postcards

Basic Weight (gsm)	335		
Paper Thickness (Microns)	390	Paper Thickness (Inches)	0.015
Base Material	100% Cotton		
Coating Type	Microporous Gloss		
Surface Texture	Smooth		
Whiteness (CIE)	75		
Brightness (TAPPI)	85		
OBA Content	None		
pH	7.5-9.5		
Recyclable	Yes		
Print Settings*	PK Ink, Semi Gloss or Lustre Photo Paper Settings are recommended as a starting point		
Notes	FibaPrint® glossy papers mark more easily, it is recommended to wear cotton gloves when handling		

\*Generic ICC Profiles for selected printer models are available from the Innova Art website.

Sheets	A4, A3, A3+, A2, 8.5x11", 11x17", 13x19", 17x22"
Rolls (15m Length)	60", 44", 36", 24", 17"

Additional Sizes are available on request, subject to order quantity.

##### Handling and Storage

- All digital Fine Art Papers and Canvases are fragile and need to be handled with extreme care. Try not to touch the surface of the paper, always hold the paper by the edges and wear cotton gloves if necessary.
- Return unused material to the original box and only store finished prints in archival quality packaging. If mounting or framing, use only archive grade tapes and glues.
- After printing, leave prints open to the air to fully dry (24 hours is recommended). Do not stack prints on top of each other straight away.
- Using a giclée varnish or spray will help protect your print from damage, effects of UV light and environmental attack.

##### Conditions of Use

- The recommended climate for storage of all papers is 15-20°C, relative humidity of 40-60%. Always store in original packaging, out of direct sunlight and protected from moisture.
- Do not exceed temperatures of 82°C (180°F) when dry mounting.

All recommendations are for your guidance only. These are subject to our test criteria, which remain subject to change without prior notice.

**FibaPrint®**  
 by Innova

## Technical Specifications

### FibaPrint® Ultra Smooth Gloss 285gsm

#### FibaPrint® Range IFA 49

##### Product Description

High White Fourdrinier Inkjet Art Paper with Ultra Smooth Gloss Surface and revolutionary Crystal Layer technology. Crystal Layer technology creates a barrier between the fibre base and the microporous glossy coating allowing the paper to maintain excellent sharp detail, an enhanced tonal range and a D-max rating up to 2.7.

##### Features

- Crystal Layer Technology, unique to FibaPrint®
- High White
- Fibre Based Photo Quality
- Archival - Acid and Lignin Free
- Aqueous Pigment and Dye Ink Compatible
- Excellent Colour Gamut and Exceptional D-max
- Instant Dry

##### Applications

- Fine Art and Photographic Open and Limited Edition Prints
- Fine Art and Fine Photographic Reproduction and Restoration
- Art and Photo Portfolios
- Greeting Cards and Postcards

Basic Weight (gsm)	285		
Paper Thickness (Microns)	285	Paper Thickness (Inches)	0.011
Base Material	Alpha Cellulose		
Coating Type	Microporous Gloss		
Surface Texture	Ultra Smooth		
Whiteness (CIE)	152		
Brightness (TAPPI)	111		
OBA Content	Yes		
pH	7.5-9.5		
Recyclable	Yes		
Print Settings*	PK Ink, Gloss or Semi Gloss Photo Paper Settings are recommended as a starting point		
Notes	FibaPrint® glossy papers mark more easily, it is recommended to wear cotton gloves when handling		

\*Generic ICC Profiles for selected printer models are available from the Innova Art website.

Sheets	A4, A3, A3+, A2, 8.5x11", 11x17", 13x19", 17x22"
Rolls (15m Length)	60", 44", 36", 24", 17"

Additional Sizes are available on request, subject to order quantity.

##### Handling and Storage

- All digital Fine Art Papers and Canvases are fragile and need to be handled with extreme care. Try not to touch the surface of the paper, always hold the paper by the edges and wear cotton gloves if necessary.
- Return unused material to the original box and only store finished prints in archival quality packaging. If mounting or framing, use only archive grade tapes and glues.
- After printing, leave prints open to the air to fully dry (24 hours is recommended). Do not stack prints on top of each other straight away.
- Using a giclée varnish or spray will help protect your print from damage, effects of UV light and environmental attack.

##### Conditions of Use

- The recommended climate for storage of all papers is 15-20°C, relative humidity of 40-60%. Always store in original packaging, out of direct sunlight and protected from moisture.
- Do not exceed temperatures of 82°C (180°F) when dry mounting.

All recommendations are for your guidance only. These are subject to our test criteria, which remain subject to change without prior notice.

**FibaPrint®**  
 by Innova

## Technical Specifications

### FibaPrint® Baryta 310gsm

### FibaPrint® Range IFA 69

#### Product Description

Natural White Fourdrinier Inkjet Art Paper with Silky Smooth Surface and revolutionary Crystal Layer technology. Crystal Layer technology creates a barrier between the baryta base and the microporous glossy coating allowing the paper to maintain excellent sharp detail, an enhanced tonal range and an exceptional D-max rating.

#### Features

- Crystal Layer Technology, unique to FibaPrint®
- Natural White
- True Barium Sulphate Layer
- Archival - Acid and Lignin Free
- Aqueous Pigment and Dye Ink Compatible
- Excellent Colour Gamut and Exceptional D-max
- Instant Dry

#### Applications

- Fine Art and Photographic Open and Limited Edition Prints
- Fine Art and Fine Photographic Reproduction and Restoration
- Art and Photo Portfolios
- Photo Albums, Memory Books and Wedding Albums
- Greeting Cards and Postcards
- Black and White Archival Prints

Basic Weight (gsm)	310		
Paper Thickness (Microns)	315	Paper Thickness (Inches)	0.012
Base Material	Alpha Cellulose		
Coating Type	Microporous Silk		
Surface Texture	Ultra Smooth		
Whiteness (CIE)	100		
Brightness (TAPPI)	96		
OBA Content	No		
pH	7.5-9.5		
Recyclable	Yes		
Print Settings*	PK Ink, Semi Gloss or Lustre Photo Paper Settings are recommended as a starting point		
Notes	FibaPrint® glossy papers mark more easily, it is recommended to wear cotton gloves when handling		

\*Generic ICC Profiles for selected printer models are available from the Innova Art website.

Sheets	A4, A3, A3+, A2, 8.5x11", 11x17", 13x19", 17x22"
Rolls (15m Length)	50", 44", 36", 24", 17"

Additional Sizes are available on request, subject to order quantity.

#### Handling and Storage

- All digital Fine Art Papers and Canvases are fragile and need to be handled with extreme care. Try not to touch the surface of the paper, always hold the paper by the edges and wear cotton gloves if necessary.
- Return unused material to the original box and only store finished prints in archival quality packaging. If mounting or framing, use only archive grade tapes and glues.
- After printing, leave prints open to the air to fully dry (24 hours is recommended). Do not stack prints on top of each other straight away.
- Using a giclée varnish or spray will help protect your print from damage, effects of UV light and environmental attack.

#### Conditions of Use

- The recommended climate for storage of all papers is 15-20°C, relative humidity of 40-60%. Always store in original packaging, out of direct sunlight and protected from moisture.
- Do not exceed temperatures of 82°C (180°F) when dry mounting.

All recommendations are for your guidance only. These are subject to our test criteria, which remain subject to change without prior notice.

**FibaPrint®**  
 by Innova



## Technical Specifications

### Smooth Cotton High White 100% Cotton 215gsm

#### Fine Art Range IFA 04

##### Product Description

Fourdrinier, acid-free, museum quality paper with a high white finish and silky smooth surface.

##### Features

- High White
- Archival - Acid and Lignin Free
- Instant Dry
- Aqueous Pigment and Dye Ink Compatible
- Excellent Colour Gamut
- Exceptional D-max

##### Applications

- Fine Art and Photographic Open and Limited Edition Prints
- Fine Art and Fine Photographic Reproduction and Restoration
- Art and Photo Portfolios
- Photo Albums, Memory Books and Wedding Albums
- Greeting Cards and Postcards

Basic Weight (gsm)	215		
Paper Thickness (Microns)	290	Paper Thickness (Inches)	0.011
Base Material	100% Cotton		
Coating Type	Matte		
Surface Texture	Smooth		
Whiteness (CIE)	109		
Brightness (TAPPI)	99		
OBA Content	Yes		
pH	7.5-9.5		
Recyclable	Yes		
Print Settings*	MK Ink, Fine Art or Matte Photo Paper Settings are recommended as a starting point		
Notes			

\*Generic ICC Profiles for selected printer models are available from the Innova Art website.

Sheets	A4, A3, A3+, A2, 8.5x11", 11x17", 13x19", 17x22"
Rolls (15m Length)	60", 44", 36", 24", 17"

Additional Sizes are available on request, subject to order quantity.

##### Handling and Storage

- All digital Fine Art Papers and Canvases are fragile and need to be handled with extreme care. Try not to touch the surface of the paper, always hold the paper by the edges and wear cotton gloves if necessary.
- Return unused material to the original box and only store finished prints in archival quality packaging. If mounting or framing, use only archive grade tapes and glues.
- After printing, leave prints open to the air to fully dry (24 hours is recommended). Do not stack prints on top of each other straight away.
- Using a giclée varnish or spray will help protect your print from damage, effects of UV light and environmental attack.

##### Conditions of Use

- The recommended climate for storage of all papers is 15-20°C, relative humidity of 40-60%. Always store in original packaging, out of direct sunlight and protected from moisture.
- Do not exceed temperatures of 82°C (180°F) when dry mounting.

All recommendations are for your guidance only. These are subject to our test criteria, which remain subject to change without prior notice.

**Fine Art**  
 by Innova

## Technical Specifications

### Smooth Cotton High White DS 100% Cotton 225gsm

#### Fine Art Range IFA 05

##### Product Description

Fourdrinier, acid-free, museum quality, two side coated paper with a high white finish and silky smooth surface.

##### Features

- High White
- Archival - Acid and Lignin Free
- Instant Dry
- Aqueous Pigment and Dye Ink Compatible
- Excellent Colour Gamut
- Exceptional D-max

##### Applications

- Fine Art and Photographic Open and Limited Edition Prints
- Fine Art and Fine Photographic Reproduction and Restoration
- Art and Photo Portfolios
- Photo Albums, Memory Books and Wedding Albums
- Greeting Cards and Postcards

Basic Weight (gsm)	225		
Paper Thickness (Microns)	300	Paper Thickness (Inches)	0.012
Base Material	100% Cotton		
Coating Type	Matte (2 Side Coated)		
Surface Texture	Smooth		
Whiteness (CIE)	109		
Brightness (TAPPI)	99		
OBA Content	Yes		
pH	7.5-9.5		
Recyclable	Yes		
Print Settings*	MK Ink, Fine Art or Matte Photo Paper Settings are recommended as a starting point		
Notes			

\*Generic ICC Profiles for selected printer models are available from the Innova Art website.

Sheets	A4, A3, A3+, A2, 8.5x11", 11x17", 13x19", 17x22"
Rolls	

Additional Sizes are available on request, subject to order quantity.

##### Handling and Storage

- All digital Fine Art Papers and Canvases are fragile and need to be handled with extreme care. Try not to touch the surface of the paper, always hold the paper by the edges and wear cotton gloves if necessary.
- Return unused material to the original box and only store finished prints in archival quality packaging. If mounting or framing, use only archive grade tapes and glues.
- After printing, leave prints open to the air to fully dry (24 hours is recommended). Do not stack prints on top of each other straight away.
- Using a giclée varnish or spray will help protect your print from damage, effects of UV light and environmental attack.

##### Conditions of Use

- The recommended climate for storage of all papers is 15-20°C, relative humidity of 40-60%. Always store in original packaging, out of direct sunlight and protected from moisture.
- Do not exceed temperatures of 82°C (180°F) when dry mounting.

All recommendations are for your guidance only. These are subject to our test criteria, which remain subject to change without prior notice.

**Fine Art**  
 by Innova

## Technical Specifications

### Soft Textured Natural White 190gsm

#### Fine Art Range IFA 06

##### Product Description

Fourdrinier, acid-free, museum quality paper with a natural white finish and soft textured surface.

##### Features

- Natural White
- Archival - Acid and Lignin Free
- Instant Dry
- Aqueous Pigment and Dye Ink Compatible
- Excellent Colour Gamut
- Exceptional D-max

##### Applications

- Fine Art and Fine Photographic Reproduction
- Photo Restoration
- Art and Photo Portfolios
- Greeting Cards and Postcards

Basic Weight (gsm)	190		
Paper Thickness (Microns)	280	Paper Thickness (Inches)	0.011
Base Material	Alpha Cellulose		
Coating Type	Matte		
Surface Texture	Soft Textured 'Etching Paper'		
Whiteness (CIE)	69		
Brightness (TAPPI)	85		
OBA Content	No		
pH	7.5-9.5		
Recyclable	Yes		
Print Settings*	MK Ink, Fine Art Textured or Archival Matte Paper Settings are recommended as a starting point		
Notes			

\*Generic ICC Profiles for selected printer models are available from the Innova Art website.

Sheets	A4, A3, A3+, A2, 8.5x11", 11x17", 13x19", 17x22"
Rolls (15m Length)	60", 44", 36", 24", 17"

Additional Sizes are available on request, subject to order quantity.

##### Handling and Storage

- All digital Fine Art Papers and Canvases are fragile and need to be handled with extreme care. Try not to touch the surface of the paper, always hold the paper by the edges and wear cotton gloves if necessary.
- Return unused material to the original box and only store finished prints in archival quality packaging. If mounting or framing, use only archive grade tapes and glues.
- After printing, leave prints open to the air to fully dry (24 hours is recommended). Do not stack prints on top of each other straight away.
- Using a giclée varnish or spray will help protect your print from damage, effects of UV light and environmental attack.

##### Conditions of Use

- The recommended climate for storage of all papers is 15-20°C, relative humidity of 40-60%. Always store in original packaging, out of direct sunlight and protected from moisture.
- Do not exceed temperatures of 82°C (180°F) when dry mounting.

All recommendations are for your guidance only. These are subject to our test criteria, which remain subject to change without prior notice.

## Technical Specifications

### Smooth Cotton Natural White 100% Cotton 315gsm

#### Fine Art Range IFA 11

##### Product Description

Fourdrinier, acid-free, museum quality paper with a natural white finish and silky smooth surface.

##### Features

- Natural White
- Archival - Acid and Lignin Free
- Instant Dry
- Aqueous Pigment and Dye Ink Compatible
- Excellent Colour Gamut
- Exceptional D-max

##### Applications

- Fine Art and Photographic Open and Limited Edition Prints
- Fine Art and Fine Photographic Reproduction and Restoration
- Art and Photo Portfolios
- Photo Albums, Memory Books and Wedding Albums
- Greeting Cards and Postcards

Basic Weight (gsm)	315		
Paper Thickness (Microns)	310	Paper Thickness (Inches)	0.012
Base Material	100% Cotton		
Coating Type	Matte		
Surface Texture	Smooth		
Whiteness (CIE)	109		
Brightness (TAPPI)	99		
OBA Content	No		
pH	7.5-9.5		
Recyclable	Yes		
Print Settings*	MK Ink, Enhanced Matte or Fine Art Paper Settings are recommended as a starting point		
Notes			

\*Generic ICC Profiles for selected printer models are available from the Innova Art website.

Sheets	A4, A3, A3+, A2, 8.5x11", 11x17", 13x19", 17x22"
Rolls (15m Length)	60", 44", 36", 24", 17"

Additional Sizes are available on request, subject to order quantity.

##### Handling and Storage

- All digital Fine Art Papers and Canvases are fragile and need to be handled with extreme care. Try not to touch the surface of the paper, always hold the paper by the edges and wear cotton gloves if necessary.
- Return unused material to the original box and only store finished prints in archival quality packaging. If mounting or framing, use only archive grade tapes and glues.
- After printing, leave prints open to the air to fully dry (24 hours is recommended). Do not stack prints on top of each other straight away.
- Using a giclée varnish or spray will help protect your print from damage, effects of UV light and environmental attack.

##### Conditions of Use

- The recommended climate for storage of all papers is 15-20°C, relative humidity of 40-60%. Always store in original packaging, out of direct sunlight and protected from moisture.
- Do not exceed temperatures of 82°C (180°F) when dry mounting.

All recommendations are for your guidance only. These are subject to our test criteria, which remain subject to change without prior notice.



## Technical Specifications

### Soft Textured Natural White 315gsm

#### Fine Art Range IFA 12

##### Product Description

Fourdrinier, acid-free, museum quality paper with a natural white finish and soft textured surface.

##### Features

- Natural White
- Archival - Acid and Lignin Free
- Instant Dry
- Aqueous Pigment and Dye Ink Compatible
- Excellent Colour Gamut
- Exceptional D-max

##### Applications

- Fine Art and Photographic Open and Limited Edition Prints
- Fine Art and Fine Photographic Reproduction and Restoration
- Art and Photo Portfolios
- Photo Albums, Memory Books and Wedding Albums
- Greeting Cards and Postcards

Basic Weight (gsm)	315		
Paper Thickness (Microns)	380	Paper Thickness (Inches)	0.015
Base Material	Alpha Cellulose		
Coating Type	Matte		
Surface Texture	Soft Textured 'Etching Paper'		
Whiteness (CIE)	109		
Brightness (TAPPI)	99		
OBA Content	None		
pH	7.5-9.5		
Recyclable	Yes		
Print Settings*	MK Ink, Fine Art Textured or Archival Matte Paper Settings are recommended as a starting point		
Notes			

\*Generic ICC Profiles for selected printer models are available from the Innova Art website.

Sheets	A4, A3, A3+, A2, 8.5x11", 11x17", 13x19", 17x22"
Rolls (15m Length)	60", 44", 36", 24", 17"

Additional Sizes are available on request, subject to order quantity.

##### Handling and Storage

- All digital Fine Art Papers and Canvases are fragile and need to be handled with extreme care. Try not to touch the surface of the paper, always hold the paper by the edges and wear cotton gloves if necessary.
- Return unused material to the original box and only store finished prints in archival quality packaging. If mounting or framing, use only archive grade tapes and glues.
- After printing, leave prints open to the air to fully dry (24 hours is recommended). Do not stack prints on top of each other straight away.
- Using a giclée varnish or spray will help protect your print from damage, effects of UV light and environmental attack.

##### Conditions of Use

- The recommended climate for storage of all papers is 15-20°C, relative humidity of 40-60%. Always store in original packaging, out of direct sunlight and protected from moisture.
- Do not exceed temperatures of 82°C (180°F) when dry mounting.

All recommendations are for your guidance only. These are subject to our test criteria, which remain subject to change without prior notice.

## Technical Specifications

### Cold Press Rough Textured Natural White 315gsm

#### Fine Art Range IFA 13

##### Product Description

Fourdrinier, acid-free, museum quality paper with a natural white finish and rough 'watercolour' textured surface.

##### Features

- Natural White
- Archival - Acid and Lignin Free
- Instant Dry
- Aqueous Pigment and Dye Ink Compatible
- Excellent Colour Gamut
- Exceptional D-max

##### Applications

- Fine Art and Photographic Open and Limited Edition Prints
- Fine Art and Fine Photographic Reproduction and Restoration
- Art and Photo Portfolios
- Photo Albums, Memory Books and Wedding Albums
- Greeting Cards and Postcards

Basic Weight (gsm)	315		
Paper Thickness (Microns)	495	Paper Thickness (Inches)	0.019
Base Material	Alpha Cellulose		
Coating Type	Matte		
Surface Texture	Rough Textured 'Watercolour Paper'		
Whiteness (CIE)	69		
Brightness (TAPPI)	85		
OBA Content	No		
pH	7.5-9.5		
Recyclable	Yes		
Print Settings*	MK Ink, Fine Art Textured or Archival Matte Paper Settings are recommended as a starting point		
Notes			

\*Generic ICC Profiles for selected printer models are available from the Innova Art website.

Sheets	A4, A3, A3+, A2, 8.5x11", 11x17", 13x19", 17x22"
Rolls (15m Length)	60", 44", 36", 24", 17"

Additional Sizes are available on request, subject to order quantity.

##### Handling and Storage

- All digital Fine Art Papers and Canvases are fragile and need to be handled with extreme care. Try not to touch the surface of the paper, always hold the paper by the edges and wear cotton gloves if necessary.
- Return unused material to the original box and only store finished prints in archival quality packaging. If mounting or framing, use only archive grade tapes and glues.
- After printing, leave prints open to the air to fully dry (24 hours is recommended). Do not stack prints on top of each other straight away.
- Using a giclée varnish or spray will help protect your print from damage, effects of UV light and environmental attack.

##### Conditions of Use

- The recommended climate for storage of all papers is 15-20°C, relative humidity of 40-60%. Always store in original packaging, out of direct sunlight and protected from moisture.
- Do not exceed temperatures of 82°C (180°F) when dry mounting.

All recommendations are for your guidance only. These are subject to our test criteria, which remain subject to change without prior notice.

## Technical Specifications

### Smooth Cotton High White 100% Cotton 315gsm

#### Fine Art Range IFA 14

##### Product Description

Fourdrinier, acid-free, museum quality paper with a high white finish and silky smooth surface.

##### Features

- High White
- Archival - Acid and Lignin Free
- Instant Dry
- Aqueous Pigment and Dye Ink Compatible
- Excellent Colour Gamut
- Exceptional D-max

##### Applications

- Fine Art and Photographic Open and Limited Edition Prints
- Fine Art and Fine Photographic Reproduction and Restoration
- Art and Photo Portfolios
- Photo Albums, Memory Books and Wedding Albums
- Greeting Cards and Postcards

Basic Weight (gsm)	315		
Paper Thickness (Microns)	390	Paper Thickness (Inches)	0.0154
Base Material	100% Cotton		
Coating Type	Matte		
Surface Texture	Smooth		
Whiteness (CIE)	109		
Brightness (TAPPI)	100		
OBA Content	Yes		
pH	7.5-9.5		
Recyclable	Yes		
Print Settings*	MK Ink, Fine Art or Matte Photo Paper Settings are recommended as a starting point		
Notes	72" Rolls only available in USA		

\*Generic ICC Profiles for selected printer models are available from the Innova Art website.

Sheets	A4, A3, A3+, A2, 8.5x11", 11x17", 13x19", 17x22"
Rolls (15m Length)	72", 60", 44", 36", 24", 17"

Additional Sizes are available on request, subject to order quantity.

##### Handling and Storage

- All digital Fine Art Papers and Canvases are fragile and need to be handled with extreme care. Try not to touch the surface of the paper, always hold the paper by the edges and wear cotton gloves if necessary.
- Return unused material to the original box and only store finished prints in archival quality packaging. If mounting or framing, use only archive grade tapes and glues.
- After printing, leave prints open to the air to fully dry (24 hours is recommended). Do not stack prints on top of each other straight away.
- Using a giclée varnish or spray will help protect your print from damage, effects of UV light and environmental attack.

##### Conditions of Use

- The recommended climate for storage of all papers is 15-20°C, relative humidity of 40-60%. Always store in original packaging, out of direct sunlight and protected from moisture.
- Do not exceed temperatures of 82°C (180°F) when dry mounting.

All recommendations are for your guidance only. These are subject to our test criteria, which remain subject to change without prior notice.

## Technical Specifications

### Soft White Cotton 280gsm

#### Fine Art Range IFA 15

##### Product Description

Fourdrinier, acid-free, museum quality paper made with 25% Cotton linters, featuring a natural white finish and slightly textured surface.

##### Features

- Natural White
- Archival - Acid and Lignin Free
- Instant Dry
- Aqueous Pigment and Dye Ink Compatible
- Excellent Colour Gamut
- Exceptional D-max
- 25% Cotton Linters

##### Applications

- Fine Art and Photographic Open and Limited Edition Prints
- Fine Art and Fine Photographic Reproduction and Restoration
- Art and Photo Portfolios
- Photo Albums, Memory Books and Wedding Albums
- Greeting Cards and Postcards

Basic Weight (gsm)	280		
Paper Thickness (Microns)	415	Paper Thickness (Inches)	0.016
Base Material	Cotton and Alpha Cellulose Mix		
Coating Type	Matte		
Surface Texture	Slightly Textured		
Whiteness (CIE)	103		
Brightness (TAPPI)	96		
OBA Content	Yes		
pH	7.5-9.5		
Recyclable	Yes		
Print Settings*	MK Ink, Fine Art Textured or Archival Matte Paper Settings are recommended as a starting point		
Notes			

\*Generic ICC Profiles for selected printer models are available from the Innova Art website.

Sheets	A4, A3, A3+, A2, 8.5x11", 11x17", 13x19", 17x22"
Rolls (15m Length)	60", 44", 36", 24", 17"

Additional Sizes are available on request, subject to order quantity.

##### Handling and Storage

- All digital Fine Art Papers and Canvases are fragile and need to be handled with extreme care. Try not to touch the surface of the paper, always hold the paper by the edges and wear cotton gloves if necessary.
- Return unused material to the original box and only store finished prints in archival quality packaging. If mounting or framing, use only archive grade tapes and glues.
- After printing, leave prints open to the air to fully dry (24 hours is recommended). Do not stack prints on top of each other straight away.
- Using a giclée varnish or spray will help protect your print from damage, effects of UV light and environmental attack.

##### Conditions of Use

- The recommended climate for storage of all papers is 15-20°C, relative humidity of 40-60%. Always store in original packaging, out of direct sunlight and protected from moisture.
- Do not exceed temperatures of 82°C (180°F) when dry mounting.

All recommendations are for your guidance only. These are subject to our test criteria, which remain subject to change without prior notice.



## Technical Specifications

### Smooth Cotton High White 100% Cotton 450gsm

#### Fine Art Range IFA 18

##### Product Description

Fourdrinier, acid-free, museum quality paper with a high white finish and silky smooth surface.

##### Features

- High White
- Archival - Acid and Lignin Free
- Instant Dry
- Aqueous Pigment and Dye Ink Compatible
- Excellent Colour Gamut
- Exceptional D-max

##### Applications

- Fine Art and Photographic Open and Limited Edition Prints
- Fine Art and Fine Photographic Reproduction and Restoration
- Art and Photo Portfolios
- Photo Albums, Memory Books and Wedding Albums
- Greeting Cards and Postcards

Basic Weight (gsm)	450		
Paper Thickness (Microns)	455	Paper Thickness (Inches)	0.018
Base Material	100% Cotton		
Coating Type	Matte		
Surface Texture	Smooth		
Whiteness (CIE)	109		
Brightness (TAPPI)	100		
OBA Content	Yes		
pH	7.5-9.5		
Recyclable	Yes		
Print Settings*	MK Ink, Enhanced Matte or Fine Art Paper Settings are recommended as a starting point		
Notes			

\*Generic ICC Profiles for selected printer models are available from the Innova Art website.

Sheets	A4, A3, A3+, A2, 914x610mm (36x24"), 914x1220mm (36x48"), 17x22"
Rolls (15m Length)	

Additional Sizes are available on request, subject to order quantity.

##### Handling and Storage

- All digital Fine Art Papers and Canvases are fragile and need to be handled with extreme care. Try not to touch the surface of the paper, always hold the paper by the edges and wear cotton gloves if necessary.
- Return unused material to the original box and only store finished prints in archival quality packaging. If mounting or framing, use only archive grade tapes and glues.
- After printing, leave prints open to the air to fully dry (24 hours is recommended). Do not stack prints on top of each other straight away.
- Using a giclée varnish or spray will help protect your print from damage, effects of UV light and environmental attack.

##### Conditions of Use

- The recommended climate for storage of all papers is 15-20°C, relative humidity of 40-60%. Always store in original packaging, out of direct sunlight and protected from moisture.
- Do not exceed temperatures of 82°C (180°F) when dry mounting.

All recommendations are for your guidance only. These are subject to our test criteria, which remain subject to change without prior notice.

## Technical Specifications

### Soft Textured Natural White 100% Cotton 315gsm

#### Fine Art Range IFA 22

##### Product Description

Fourdrinier, acid-free, museum quality paper with a natural white finish and soft textured surface.

##### Features

- Natural White
- Archival - Acid and Lignin Free
- Instant Dry
- Aqueous Pigment and Dye Ink Compatible
- Excellent Colour Gamut
- Exceptional D-max

##### Applications

- Fine Art and Photographic Open and Limited Edition Prints
- Fine Art and Fine Photographic Reproduction and Restoration
- Art and Photo Portfolios
- Photo Albums, Memory Books and Wedding Albums
- Greeting Cards and Postcards

Basic Weight (gsm)	315		
Paper Thickness (Microns)	460	Paper Thickness (Inches)	0.018
Base Material	100% Cotton		
Coating Type	Matte		
Surface Texture	Soft Textured 'Etching Paper'		
Whiteness (CIE)	109		
Brightness (TAPPI)	86		
OBA Content	No		
pH	7.5-9.5		
Recyclable	Yes		
Print Settings*	MK Ink, Fine Art Textured or Archival Matte Paper Settings are recommended as a starting point		
Notes			

\*Generic ICC Profiles for selected printer models are available from the Innova Art website.

Sheets	A4, A3, A3+, A2, 8.5x11", 11x17", 13x19", 17x22"
Rolls (15m Length)	60", 44", 36", 24", 17"

Additional Sizes are available on request, subject to order quantity.

##### Handling and Storage

- All digital Fine Art Papers and Canvases are fragile and need to be handled with extreme care. Try not to touch the surface of the paper, always hold the paper by the edges and wear cotton gloves if necessary.
- Return unused material to the original box and only store finished prints in archival quality packaging. If mounting or framing, use only archive grade tapes and glues.
- After printing, leave prints open to the air to fully dry (24 hours is recommended). Do not stack prints on top of each other straight away.
- Using a giclée varnish or spray will help protect your print from damage, effects of UV light and environmental attack.

##### Conditions of Use

- The recommended climate for storage of all papers is 15-20°C, relative humidity of 40-60%. Always store in original packaging, out of direct sunlight and protected from moisture.
- Do not exceed temperatures of 82°C (180°F) when dry mounting.

All recommendations are for your guidance only. These are subject to our test criteria, which remain subject to change without prior notice.

## Technical Specifications

### Décor Watercolour Art 245gsm

#### Fine Art Range IFA 23

##### Product Description

Fourdrinier, acid-free, museum quality paper designed for high volume inkjet printing, featuring a bright white finish and rough 'watercolour' textured surface.

##### Features

- Bright White
- Archival - Acid and Lignin Free
- Instant Dry
- Aqueous Pigment and Dye Ink Compatible
- Excellent Colour Gamut
- Exceptional D-max

##### Applications

- Fine Art and Photographic Open Edition Prints
- Art and Photo Portfolios

Basic Weight (gsm)	245		
Paper Thickness (Microns)	375	Paper Thickness (Inches)	0.016
Base Material	Alpha Cellulose		
Coating Type	Matte		
Surface Texture	Rough Textured 'Watercolour Paper'		
Whiteness (CIE)	140		
Brightness (TAPPI)	110		
OBA Content	Yes		
pH	7.5-9.5		
Recyclable	Yes		
Print Settings*	MK Ink, Fine Art Textured or Archival Matte Paper Settings are recommended as a starting point		
Notes			

\*Generic ICC Profiles for selected printer models are available from the Innova Art website.

Sheets	A4, A3, A3+, A2
Rolls (30m Length)	60", 44", 36", 24", 17"

Additional Sizes are available on request, subject to order quantity.

##### Handling and Storage

- All digital Fine Art Papers and Canvases are fragile and need to be handled with extreme care. Try not to touch the surface of the paper, always hold the paper by the edges and wear cotton gloves if necessary.
- Return unused material to the original box and only store finished prints in archival quality packaging. If mounting or framing, use only archive grade tapes and glues.
- After printing, leave prints open to the air to fully dry (24 hours is recommended). Do not stack prints on top of each other straight away.
- Using a giclée varnish or spray will help protect your print from damage, effects of UV light and environmental attack.

##### Conditions of Use

- The recommended climate for storage of all papers is 15-20°C, relative humidity of 40-60%. Always store in original packaging, out of direct sunlight and protected from moisture.
- Do not exceed temperatures of 82°C (180°F) when dry mounting.

All recommendations are for your guidance only. These are subject to our test criteria, which remain subject to change without prior notice.

## Technical Specifications

### Décor Smooth Art 210gsm

#### Fine Art Range IFA 24

##### Product Description

Fourdrinier, acid-free, museum quality paper designed for high volume inkjet printing, featuring a natural white finish and slightly textured surface.

##### Features

- Natural White
- Archival - Acid and Lignin Free
- Instant Dry
- Aqueous Pigment and Dye Ink Compatible
- Excellent Colour Gamut
- Exceptional D-max

##### Applications

- Fine Art and Photographic Open Edition Prints
- Art Poster Reproduction
- Photo Albums, Memory Books and Wedding Albums

Basic Weight (gsm)	210		
Paper Thickness (Microns)	225	Paper Thickness (Inches)	0.016
Base Material	Alpha Cellulose		
Coating Type	Matte		
Surface Texture	Slightly Textured		
Whiteness (CIE)	115		
Brightness (TAPPI)	99		
OBA Content	No		
pH	7.5-9.5		
Recyclable	Yes		
Print Settings*	MK Ink, Matte Photo or Enhanced Matte Paper Settings are recommended as a starting point		
Notes			

\*Generic ICC Profiles for selected printer models are available from the Innova Art website.

Sheets	A4, A3, A3+, A2
Rolls (30m Length)	60", 44", 36", 24", 17"

Additional Sizes are available on request, subject to order quantity.

##### Handling and Storage

- All digital Fine Art Papers and Canvases are fragile and need to be handled with extreme care. Try not to touch the surface of the paper, always hold the paper by the edges and wear cotton gloves if necessary.
- Return unused material to the original box and only store finished prints in archival quality packaging. If mounting or framing, use only archive grade tapes and glues.
- After printing, leave prints open to the air to fully dry (24 hours is recommended). Do not stack prints on top of each other straight away.
- Using a giclée varnish or spray will help protect your print from damage, effects of UV light and environmental attack.

##### Conditions of Use

- The recommended climate for storage of all papers is 15-20°C, relative humidity of 40-60%. Always store in original packaging, out of direct sunlight and protected from moisture.
- Do not exceed temperatures of 82°C (180°F) when dry mounting.

All recommendations are for your guidance only. These are subject to our test criteria, which remain subject to change without prior notice.

## Technical Specifications

### Décor Smooth Art DS 220gsm

#### Fine Art Range IFA 25

##### Product Description

Fourdrinier, acid-free, museum quality, two side coated paper designed for high volume inkjet printing, featuring a natural white finish and slightly textured surface.

##### Features

- Natural White
- Archival - Acid and Lignin Free
- Instant Dry
- Aqueous Pigment and Dye Ink Compatible
- Excellent Colour Gamut
- Exceptional D-max

##### Applications

- Fine Art and Photographic Open Edition Prints
- Art Poster Reproduction
- Photo Albums, Memory Books and Wedding Albums
- Greeting Cards and Postcards

Basic Weight (gsm)	220		
Paper Thickness (Microns)	325	Paper Thickness (Inches)	0.016
Base Material	Alpha Cellulose		
Coating Type	Matte (2 Side Coated)		
Surface Texture	Slightly Textured		
Whiteness (CIE)	115		
Brightness (TAPPI)	99		
OBA Content	No		
pH	7.5-9.5		
Recyclable	Yes		
Print Settings*	MK Ink, Matte Photo or Enhanced Matte Paper Settings are recommended as a starting point		
Notes			

\*Generic ICC Profiles for selected printer models are available from the Innova Art website.

Sheets	A4, A3, A3+, A2
Rolls	

Additional Sizes are available on request, subject to order quantity.

##### Handling and Storage

- All digital Fine Art Papers and Canvases are fragile and need to be handled with extreme care. Try not to touch the surface of the paper, always hold the paper by the edges and wear cotton gloves if necessary.
- Return unused material to the original box and only store finished prints in archival quality packaging. If mounting or framing, use only archive grade tapes and glues.
- After printing, leave prints open to the air to fully dry (24 hours is recommended). Do not stack prints on top of each other straight away.
- Using a giclée varnish or spray will help protect your print from damage, effects of UV light and environmental attack.

##### Conditions of Use

- The recommended climate for storage of all papers is 15-20°C, relative humidity of 40-60%. Always store in original packaging, out of direct sunlight and protected from moisture.
- Do not exceed temperatures of 82°C (180°F) when dry mounting.

All recommendations are for your guidance only. These are subject to our test criteria, which remain subject to change without prior notice.



## Technical Specifications

### Soft Textured Bright White Cotton 315gsm

#### Fine Art Range IFA 26

##### Product Description

Fourdrinier, acid-free, museum quality paper with a bright white finish and soft textured surface.

##### Features

- Bright White
- Archival - Acid and Lignin Free
- Instant Dry
- Aqueous Pigment and Dye Ink Compatible
- Excellent Colour Gamut
- Exceptional D-max

##### Applications

- Fine Art and Photographic Open and Limited Edition Prints
- Fine Art and Fine Photographic Reproduction and Restoration
- Art and Photo Portfolios
- Photo Albums, Memory Books and Wedding Albums
- Greeting Cards and Postcards

Basic Weight (gsm)	315		
Paper Thickness (Microns)	460	Paper Thickness (Inches)	0.018
Base Material	100% Cotton		
Coating Type	Matte		
Surface Texture	Soft Textured 'Etching Paper'		
Whiteness (CIE)	136		
Brightness (TAPPI)	110		
OBA Content	Yes		
pH	7.5-9.5		
Recyclable	Yes		
Print Settings*	MK Ink, Fine Art Textured or Archival Matte Paper Settings are recommended as a starting point		
Notes			

\*Generic ICC Profiles for selected printer models are available from the Innova Art website.

Sheets	A4, A3, A3+, A2, 8.5x11", 13x19", 17x22"
Rolls (15m Length)	60", 44", 36", 24", 17"

Additional Sizes are available on request, subject to order quantity.

##### Handling and Storage

- All digital Fine Art Papers and Canvases are fragile and need to be handled with extreme care. Try not to touch the surface of the paper, always hold the paper by the edges and wear cotton gloves if necessary.
- Return unused material to the original box and only store finished prints in archival quality packaging. If mounting or framing, use only archive grade tapes and glues.
- After printing, leave prints open to the air to fully dry (24 hours is recommended). Do not stack prints on top of each other straight away.
- Using a giclée varnish or spray will help protect your print from damage, effects of UV light and environmental attack.

##### Conditions of Use

- The recommended climate for storage of all papers is 15-20°C, relative humidity of 40-60%. Always store in original packaging, out of direct sunlight and protected from moisture.
- Do not exceed temperatures of 82°C (180°F) when dry mounting.

All recommendations are for your guidance only. These are subject to our test criteria, which remain subject to change without prior notice.

## Technical Specifications

### Cold Press Rough Textured Bright White Cotton 300gsm

#### Fine Art Range IFA 27

##### Product Description

Fourdrinier, acid-free, museum quality paper with cotton content and a bright white finish with rough textured 'watercolour' surface.

##### Features

- Bright White
- Archival - Acid and Lignin Free
- Instant Dry
- Aqueous Pigment and Dye Ink Compatible
- Excellent Colour Gamut
- Exceptional D-max
- Cotton Content

##### Applications

- Fine Art and Photographic Open and Limited Edition Prints
- Art and Photo Portfolios

Basic Weight (gsm)	300		
Paper Thickness (Microns)	435	Paper Thickness (Inches)	0.016
Base Material	Cotton and Alpha Cellulose Mix		
Coating Type	Matte		
Surface Texture	Rough Textured 'Watercolour Paper'		
Whiteness (CIE)	127		
Brightness (TAPPI)	85		
OBA Content	Yes		
pH	7.5-9.5		
Recyclable	Yes		
Print Settings*	MK Ink, Fine Art Textured or Archival Matte Paper Settings are recommended as a starting point		
Notes			

\*Generic ICC Profiles for selected printer models are available from the Innova Art website.

Sheets	A4, A3, A3+, A2
Rolls (15m Length)	60", 44", 36", 24", 17"

Additional Sizes are available on request, subject to order quantity.

##### Handling and Storage

- All digital Fine Art Papers and Canvases are fragile and need to be handled with extreme care. Try not to touch the surface of the paper, always hold the paper by the edges and wear cotton gloves if necessary.
- Return unused material to the original box and only store finished prints in archival quality packaging. If mounting or framing, use only archive grade tapes and glues.
- After printing, leave prints open to the air to fully dry (24 hours is recommended). Do not stack prints on top of each other straight away.
- Using a giclée varnish or spray will help protect your print from damage, effects of UV light and environmental attack.

##### Conditions of Use

- The recommended climate for storage of all papers is 15-20°C, relative humidity of 40-60%. Always store in original packaging, out of direct sunlight and protected from moisture.
- Do not exceed temperatures of 82°C (180°F) when dry mounting.

All recommendations are for your guidance only. These are subject to our test criteria, which remain subject to change without prior notice.

## Technical Specifications

### Matte Canvas High White 350gsm

#### Fine Art Range IFA 35

##### Product Description

Polycotton Canvas with flexible Matte coating.

##### Features

- High White
- Archival - Acid and Lignin Free
- Instant Dry
- Aqueous Pigment and Dye Ink Compatible
- Excellent Colour Gamut
- Exceptional D-max
- Compatible with Water based and Solvent giclée varnishes
- Ideal for stretching

##### Applications

- Fine Art and Photographic Open and Limited Edition Prints
- Stretched Canvases and Gallery Wraps
- Compatible with JetMaster Photo Wrap framing system

Basic Weight (gsm)	350		
Canvas Thickness (Microns)	405	Canvas Thickness (Inches)	0.016
Base Material	Polycotton		
Coating Type	Matte		
Surface Texture	Canvas		
Whiteness (CIE)	152		
Brightness (TAPPI)	88		
OBA Content	Yes		
pH	7.5-9.5		
Recyclable	Yes		
Print Settings*	MK Ink, an Art Matte Canvas Setting is recommended as a starting point		
Notes			

\*Generic ICC Profiles for selected printer models are available from the Innova Art website.

Sheets	A4, A3
Rolls (15m Length)	60", 44", 36", 24", 17"

Additional Sizes are available on request, subject to order quantity.

##### Handling and Storage

- All digital Fine Art Papers and Canvases are fragile and need to be handled with extreme care. Try not to touch the surface of the paper, always hold the paper by the edges and wear cotton gloves if necessary.
- Return unused material to the original box and only store finished prints in archival quality packaging. If mounting or framing, use only archive grade tapes and glues.
- After printing, leave prints open to the air to fully dry (24 hours is recommended). Do not stack prints on top of each other straight away.
- Using a giclée varnish or spray will help protect your print from damage, effects of UV light and environmental attack.

##### Conditions of Use

- The recommended climate for storage of all papers is 15-20°C, relative humidity of 40-60%. Always store in original packaging, out of direct sunlight and protected from moisture.
- Do not exceed temperatures of 82°C (180°F) when dry mounting.

All recommendations are for your guidance only. These are subject to our test criteria, which remain subject to change without prior notice.



## Matte Polyester Canvas 260gsm Graphic Art Range IFA 52

### Product Description

Inkjet coated Bright White canvas, designed for value orientated, high volume print shops using Aqueous printers.

### Features

- Bright White
- Aqueous Pigment and Dye Ink Compatible
- Fast Drying, Scratch and Water Resistant Coating
- 100% Polyester, Smooth Woven Canvas Surface
- Excellent Colour Gamut
- High Level of Crack Resistance on Edges and Corners
- Easy to Stretch
- Lightweight and Economical

### Applications

- Fine Art and Photographic Open Edition Prints for the Décor Art market
- Fine Art Reproduction Prints for Interior Imaging
- Stretched Canvases and Gallery Wraps
- Compatible with JetMaster Photo Wrap display system

Basic Weight (gsm)	260		
Paper Thickness (Microns)	330	Paper Thickness (Inches)	0.013
Base Material	Polyester		
Coating Type	Water Based Matte		
Surface Texture	Canvas		
Whiteness (CIE)	>140		
Brightness (TAPPI)	Not Applicable		
OBA Content	Yes		
Opacity (%)	>85		
pH	7.5		
Recyclable	Yes		
Print Settings*	MK ink, a Matte Art Canvas Setting is recommended as a starting point		
Ink Type	Aqueous		
Notes	*Generic ICC Profiles for selected printer models are available from the Innova Art website		

Sheets	
Rolls (15m Length, 3" Core)	60", 44", 36", 24", 17"

Additional Sizes are available on request, subject to order quantity.

### Handling and Storage

- All digital Fine Art Papers and Canvases are fragile and need to be handled with extreme care. Try not to touch the surface of the paper, always hold the paper by the edges and wear cotton gloves if necessary.
- Return unused material to the original box and only store finished prints in archival quality packaging. If mounting or framing, use only archive grade tapes and glues.
- After printing, leave prints open to the air to fully dry (24 hours is recommended). Do not stack prints on top of each other straight away.
- Using a giclée varnish or spray will help protect your print from damage, effects of UV light and environmental attack.

### Conditions of Use

- The recommended climate for storage of all papers is 15-20°C, relative humidity of 40-60%. Always store in original packaging, out of direct sunlight and protected from moisture.
- Do not exceed temperatures of 82°C (180°F) when dry mounting.

All recommendations are for your guidance only. These are subject to our test criteria, which remain subject to change without prior notice.

**Graphic Art**  
by Innova



## Matte Canvas High White 380gsm Graphic Art Range IFA 55

### Product Description

Inkjet coated High White canvas, designed for value orientated, high volume print shops using Aqueous printers.

### Features

- High White
- Aqueous Pigment and Dye Ink Compatible
- Fast Drying, Scratch and Water Resistant Coating
- Polycotton Mix, True Canvas Woven Surface
- Excellent Colour Gamut
- High Level of Crack Resistance on Edges and Corners
- Easy to Stretch
- Heavyweight

### Applications

- Fine Art and Photographic Open Edition Prints for the Décor Art market
- Fine Art Reproduction Prints for Interior Imaging
- Stretched Canvases and Gallery Wraps
- Compatible with JetMaster Photo Wrap display system

Basic Weight (gsm)	380		
Paper Thickness (Microns)	500	Paper Thickness (Inches)	0.019
Base Material	Poly Cotton Mix		
Coating Type	Water Based Matte		
Surface Texture	Canvas		
Whiteness (CIE)	>130		
Brightness (TAPPI)	Not Applicable		
OBA Content	Yes		
Opacity (%)	>95		
pH	7.5		
Recyclable	Yes		
Print Settings*	MK ink, a Matte Art Canvas Setting is recommended as a starting point		
Ink Type	Aqueous		
Notes	*Generic ICC Profiles for selected printer models are available from the Innova Art website		

Sheets	
Rolls (15m Length, 3" Core)	60", 44", 36", 24", 17"

Additional Sizes are available on request, subject to order quantity.

### Handling and Storage

- All digital Fine Art Papers and Canvases are fragile and need to be handled with extreme care. Try not to touch the surface of the paper, always hold the paper by the edges and wear cotton gloves if necessary.
- Return unused material to the original box and only store finished prints in archival quality packaging. If mounting or framing, use only archive grade tapes and glues.
- After printing, leave prints open to the air to fully dry (24 hours is recommended). Do not stack prints on top of each other straight away.
- Using a giclée varnish or spray will help protect your print from damage, effects of UV light and environmental attack.

### Conditions of Use

- The recommended climate for storage of all papers is 15-20°C, relative humidity of 40-60%. Always store in original packaging, out of direct sunlight and protected from moisture.
- Do not exceed temperatures of 82°C (180°F) when dry mounting.

All recommendations are for your guidance only. These are subject to our test criteria, which remain subject to change without prior notice.

**Graphic Art**  
by Innova





## Gloss Polycotton Canvas 390gsm Graphic Art Range IFA 56

### Product Description

Inkjet coated Natural White canvas designed for Photo and Art reproduction by print shops using Aqueous printers.

### Features

- Natural White
- Aqueous Pigment and Dye Ink Compatible
- Instant Dry, Scratch and Water Resistant
- Polycotton Mix, Canvas Woven Surface
- Flexible Microporous Gloss Coating
- Excellent Colour Gamut
- High Level of Crack Resistance on Edges and Corners
- Easy to Stretch, Heavyweight

### Applications

- Fine Art and Photographic Open Edition Prints for the Décor Art market
- Fine Art Reproduction Prints for Interior Imaging
- Stretched Canvases and Gallery Wraps
- Compatible with JetMaster Photo Wrap display system

Basic Weight (gsm)	390		
Paper Thickness (Microns)	520	Paper Thickness (Inches)	0.020
Base Material	Poly Cotton Mix		
Coating Type	Microporous Gloss		
Surface Texture	Canvas		
Whiteness (CIE)	>75		
Brightness (TAPPI)	Not Applicable		
OBA Content	Not Applicable		
Opacity (%)	>95		
pH	7.5		
Recyclable	Yes		
Print Settings*	PK ink, a Gloss or satin Canvas, or Premium Lustre Photo Paper Setting is recommended as a starting point		
Ink Type	Aqueous		
Notes	*Generic ICC Profiles for selected printer models are available from the Innova Art website		

Sheets	
Rolls (15m Length, 3" Core)	60", 44", 36", 24", 17"

Additional Sizes are available on request, subject to order quantity.

### Handling and Storage

- All digital Fine Art Papers and Canvases are fragile and need to be handled with extreme care. Try not to touch the surface of the paper, always hold the paper by the edges and wear cotton gloves if necessary.
- Return unused material to the original box and only store finished prints in archival quality packaging. If mounting or framing, use only archive grade tapes and glues.
- After printing, leave prints open to the air to fully dry (24 hours is recommended). Do not stack prints on top of each other straight away.
- Using a giclée varnish or spray will help protect your print from damage, effects of UV light and environmental attack.

### Conditions of Use

- The recommended climate for storage of all papers is 15-20°C, relative humidity of 40-60%. Always store in original packaging, out of direct sunlight and protected from moisture.
- Do not exceed temperatures of 82°C (180°F) when dry mounting.

All recommendations are for your guidance only. These are subject to our test criteria, which remain subject to change without prior notice.

**Graphic Art**  
by Innova

## Glossy Poster Paper 200gsm Graphic Art Range IFA 88

### Product Description

High white inkjet coated smooth paper designed for value orientated, high volume print shops using eco-solvent printers.

### Features

- High White
- Excellent Image Quality
- Brilliant Colour Reproduction
- Eco-Solvent, Latex and UV Ink Compatible
- Scratch Resistant Coating
- Suitable for Indoor and Outdoor Application

### Applications

- Posters
- Open Edition Prints for the Décor Art market
- Point of Sale

Basic Weight (gsm)	200		
Paper Thickness (Microns)	185	Paper Thickness (Inches)	0.007
Base Material	Alpha Cellulose		
Coating Type	Eco-Solvent Gloss		
Surface Texture	Smooth		
Whiteness (CIE)	140		
Brightness (TAPPI)	100		
OBA Content	Yes		
Opacity (%)	90		
pH	Not Applicable		
Recyclable	Yes		
Ink Type	Eco Solvent, UV and Latex		
Notes	For profiles please contact your rip vendor.		

Sheets	N/A
Rolls (30m Length, 3"Core)	60", 54", 30"

Additional Sizes are available on request, subject to order quantity.

### Handling and Storage

- All digital Fine Art Papers and Canvases are fragile and need to be handled with extreme care. Try not to touch the surface of the paper, always hold the paper by the edges and wear cotton gloves if necessary.
- Return unused material to the original box and only store finished prints in archival quality packaging. If mounting or framing, use only archive grade tapes and glues.
- After printing, leave prints open to the air to fully dry (24 hours is recommended). Do not stack prints on top of each other straight away.
- Using a giclée varnish or spray will help protect your print from damage, effects of UV light and environmental attack.

### Conditions of Use

- The recommended climate for storage of all papers is 15-20°C, relative humidity of 40-60%. Always store in original packaging, out of direct sunlight and protected from moisture.
- Do not exceed temperatures of 82°C (180°F) when dry mounting.

All recommendations are for your guidance only. These are subject to our test criteria, which remain subject to change without prior notice.

**Graphic Art**  
 by Innova

## Satin Poster Paper 200gsm Graphic Art Range IFA 89

### Product Description

High white inkjet coated smooth paper designed for value orientated, high volume print shops using eco-solvent printers.

### Features

- High White
- Excellent Image Quality
- Brilliant Colour Reproduction
- Eco-Solvent, Latex and UV Ink Compatible
- Scratch Resistant Coating
- Suitable For Indoor and Outdoor Application

### Applications

- Posters
- Open Edition Prints for the Décor Art market
- Point of Sale

Basic Weight (gsm)	200		
Paper Thickness (Microns)	185	Paper Thickness (Inches)	0.007
Base Material	Alpha Cellulose		
Coating Type	Eco-Solvent Satin		
Surface Texture	Smooth		
Whiteness (CIE)	140		
Brightness (TAPPI)	100		
OBA Content	Yes		
Opacity (%)	90		
pH	N/A		
Recyclable	Yes		
Ink Type	Eco Solvent, UV and Latex		
Notes	For profiles please contact your rip vendor.		

Sheets	N/A
Rolls (30m Length, 3"Core)	60", 54", 30"

Additional Sizes are available on request, subject to order quantity.

### Handling and Storage

- All digital Fine Art Papers and Canvases are fragile and need to be handled with extreme care. Try not to touch the surface of the paper, always hold the paper by the edges and wear cotton gloves if necessary.
- Return unused material to the original box and only store finished prints in archival quality packaging. If mounting or framing, use only archive grade tapes and glues.
- After printing, leave prints open to the air to fully dry (24 hours is recommended). Do not stack prints on top of each other straight away.
- Using a giclée varnish or spray will help protect your print from damage, effects of UV light and environmental attack.

### Conditions of Use

- The recommended climate for storage of all papers is 15-20°C, relative humidity of 40-60%. Always store in original packaging, out of direct sunlight and protected from moisture.
- Do not exceed temperatures of 82°C (180°F) when dry mounting.

All recommendations are for your guidance only. These are subject to our test criteria, which remain subject to change without prior notice.

**Graphic Art**  
 by Innova

## Décor Soft Textured Art 100% Cotton 330gsm Graphic Art Range IFA 92

### Product Description

Natural white inkjet coated cotton paper with a soft textured surface designed for value orientated, high volume print shops using eco-solvent printers.

### Features

- Natural White, 100% Cotton
- Slightly Textured Matte surface
- Archival - Acid and Lignin Free
- Eco-Solvent, Latex and UV Ink Compatible
- Excellent Colour Gamut

### Applications

- Fine Art and Photographic Open Edition Prints for the Décor Art market
- Fine Art Reproduction Prints for Interior Imaging

Basic Weight (gsm)	330		
Paper Thickness (Microns)	506	Paper Thickness (Inches)	0.020
Base Material	100% Cotton		
Coating Type	Eco-Solvent Matte		
Surface Texture	Soft Textured 'Etching Paper'		
Whiteness (CIE)	109		
Brightness (TAPPI)	86		
OBA Content	None		
Opacity (%)	100		
pH	7.5-9.5		
Recyclable	Yes		
Ink Type	Eco Solvent, UV and Latex		
Notes	For profiles please contact your rip vendor.		

Sheets	N/A
Rolls (25m Length, 3"Core)	60", 54", 30"

Additional Sizes are available on request, subject to order quantity.

### Handling and Storage

- All digital Fine Art Papers and Canvases are fragile and need to be handled with extreme care. Try not to touch the surface of the paper, always hold the paper by the edges and wear cotton gloves if necessary.
- Return unused material to the original box and only store finished prints in archival quality packaging. If mounting or framing, use only archive grade tapes and glues.
- After printing, leave prints open to the air to fully dry (24 hours is recommended). Do not stack prints on top of each other straight away.
- Using a giclée varnish or spray will help protect your print from damage, effects of UV light and environmental attack.

### Conditions of Use

- The recommended climate for storage of all papers is 15-20°C, relative humidity of 40-60%. Always store in original packaging, out of direct sunlight and protected from moisture.
- Do not exceed temperatures of 82°C (180°F) when dry mounting.

All recommendations are for your guidance only. These are subject to our test criteria, which remain subject to change without prior notice.

**Graphic Art**  
by Innova

## Décor Art Rough Textured Bright White ES 260gsm

### Graphic Art Range IFA 93

#### Product Description

Bright white inkjet coated watercolour paper designed for value orientated, high volume print shops using eco-solvent printers.

#### Features

- Bright White
- Eco-Solvent, Latex and UV Ink Compatible
- Excellent Colour Gamut

#### Applications

- Fine Art and Photographic Open Edition Prints for the Décor Art market
- Fine Art Reproduction Prints for Interior Imaging

Basic Weight (gsm)	260		
Paper Thickness (Microns)	330	Paper Thickness (Inches)	0.013
Base Material	Alpha Cellulose		
Coating Type	Eco-Solvent Satin		
Surface Texture	Rough Textured 'Watercolour Paper'		
Whiteness (CIE)	159		
Brightness (TAPPI)	114		
OBA Content	Yes		
Opacity (%)	100		
pH	7.5-9.5		
Recyclable	Yes		
Ink Type	Eco Solvent, UV and Latex		
Notes	For profiles please contact your rip vendor.		

Sheets	
Rolls (25m Length, 3" Core)	60", 54", 30"

Additional Sizes are available on request, subject to order quantity.

#### Handling and Storage

- All digital Fine Art Papers and Canvases are fragile and need to be handled with extreme care. Try not to touch the surface of the paper, always hold the paper by the edges and wear cotton gloves if necessary.
- Return unused material to the original box and only store finished prints in archival quality packaging. If mounting or framing, use only archive grade tapes and glues.
- After printing, leave prints open to the air to fully dry (24 hours is recommended). Do not stack prints on top of each other straight away.
- Using a giclée varnish or spray will help protect your print from damage, effects of UV light and environmental attack.

#### Conditions of Use

- The recommended climate for storage of all papers is 15-20°C, relative humidity of 40-60%. Always store in original packaging, out of direct sunlight and protected from moisture.
- Do not exceed temperatures of 82°C (180°F) when dry mounting.

All recommendations are for your guidance only. These are subject to our test criteria, which remain subject to change without prior notice.

**Graphic Art**  
 by Innova



## Décor Velvet Art 300gsm Graphic Art Range IFA 94

### Product Description

Bright white inkjet coated smooth paper designed for value orientated, high volume print shops using eco-solvent printers.

### Features

- Bright White
- Velvet Smooth, Satin Surface
- Eco-Solvent, Latex and UV Ink Compatible
- Excellent Colour Gamut

### Applications

- Fine Art and Photographic Open Edition Prints for the Décor Art market
- Fine Art Reproduction Prints for Interior Imaging

Basic Weight (gsm)	300		
Paper Thickness (Microns)	432	Paper Thickness (Inches)	0.017
Base Material	Alpha Cellulose		
Coating Type	Eco-Solvent Satin		
Surface Texture	Velvet Smooth		
Whiteness (CIE)	166		
Brightness (TAPPI)	116		
OBA Content	Yes		
Opacity (%)	100		
pH	7.5-9.5		
Recyclable	Yes		
Ink Type	Eco Solvent, UV and Latex		
Notes	For profiles please contact your rip vendor.		

Sheets	
Rolls (25m Length, 3" Core)	60", 54", 30"

Additional Sizes are available on request, subject to order quantity.

### Handling and Storage

- All digital Fine Art Papers and Canvases are fragile and need to be handled with extreme care. Try not to touch the surface of the paper, always hold the paper by the edges and wear cotton gloves if necessary.
- Return unused material to the original box and only store finished prints in archival quality packaging. If mounting or framing, use only archive grade tapes and glues.
- After printing, leave prints open to the air to fully dry (24 hours is recommended). Do not stack prints on top of each other straight away.
- Using a giclée varnish or spray will help protect your print from damage, effects of UV light and environmental attack.

### Conditions of Use

- The recommended climate for storage of all papers is 15-20°C, relative humidity of 40-60%. Always store in original packaging, out of direct sunlight and protected from moisture.
- Do not exceed temperatures of 82°C (180°F) when dry mounting.

All recommendations are for your guidance only. These are subject to our test criteria, which remain subject to change without prior notice.

**Graphic Art**  
by Innova

## Semi-Gloss Canvas ES 240gsm

### Graphic Art Range IFA 95

#### Product Description

Inkjet coated High White canvas designed for value orientated, high volume print shops using eco-solvent printers.

#### Features

- High White
- Eco-Solvent, Latex and UV Ink Compatible
- Fast Drying
- Scratch Resistant Coating, Waterproof
- Polycotton Mix
- High Level of Crack Resistance
- Lightweight and Economical

#### Applications

- Fine Art and Photographic Open Edition Prints for the Décor Art market
- Fine Art Reproduction Prints for Interior Imaging
- Stretched Canvases and Gallery Wraps
- Compatible with JetMaster Photo Wrap display system

Basic Weight (gsm)	240		
Paper Thickness (Microns)	340	Paper Thickness (Inches)	0.013
Base Material	Polycotton		
Coating Type	Eco-Solvent Semi-Gloss		
Surface Texture	Canvas		
Whiteness (CIE)	>115		
Brightness (TAPPI)	95.6		
OBA Content	No		
Opacity (%)	>83		
pH	7.5		
Recyclable	Yes		
Ink Type	Eco Solvent, UV and Latex		
Notes	For profiles please contact your rip vendor.		

Sheets	
Rolls (25m Length, 3" Core)	60", 54", 30"

Additional Sizes are available on request, subject to order quantity.

#### Handling and Storage

- All digital Fine Art Papers and Canvases are fragile and need to be handled with extreme care. Try not to touch the surface of the paper, always hold the paper by the edges and wear cotton gloves if necessary.
- Return unused material to the original box and only store finished prints in archival quality packaging. If mounting or framing, use only archive grade tapes and glues.
- After printing, leave prints open to the air to fully dry (24 hours is recommended). Do not stack prints on top of each other straight away.
- Using a giclée varnish or spray will help protect your print from damage, effects of UV light and environmental attack.

#### Conditions of Use

- The recommended climate for storage of all papers is 15-20°C, relative humidity of 40-60%. Always store in original packaging, out of direct sunlight and protected from moisture.
- Do not exceed temperatures of 82°C (180°F) when dry mounting.

All recommendations are for your guidance only. These are subject to our test criteria, which remain subject to change without prior notice.

**Graphic Art**  
by Innova

## Semi-Gloss Canvas ES 370gsm

### Graphic Art Range IFA 96

#### Product Description

Inkjet Coated Bright White Canvas designed for value orientated, high volume print shops using eco-solvent printers.

#### Features

- Bright White
- Eco-Solvent, Latex and UV Ink Compatible
- Fast Drying
- Scratch resistant Coating, Waterproof
- Polycotton Mix
- High Level of Crack Resistance
- Heavyweight, Textured Surface

#### Applications

- Fine Art and Photographic Open Edition Prints for the Décor Art market
- Fine Art Reproduction Prints for Interior Imaging
- Stretched Canvases and Gallery Wraps
- Compatible with JetMaster Photo Wrap framing system

Basic Weight (gsm)	370		
Paper Thickness (Microns)	500	Paper Thickness (Inches)	0.019
Base Material	Polycotton		
Coating Type	Eco-Solvent Semi-Gloss		
Surface Texture	Canvas		
Whiteness (CIE)	>95		
Brightness (TAPPI)	95.6		
OBA Content	Yes		
Opacity (%)	>94		
pH	7.5		
Recyclable	Yes		
Ink Type	Eco Solvent, UV and Latex		
Notes	For profiles please contact your rip vendor.		

Sheets	
Rolls (25m Length, 3" Core)	60", 54", 30"

Additional Sizes are available on request, subject to order quantity.

#### Handling and Storage

- All digital Fine Art Papers and Canvases are fragile and need to be handled with extreme care. Try not to touch the surface of the paper, always hold the paper by the edges and wear cotton gloves if necessary.
- Return unused material to the original box and only store finished prints in archival quality packaging. If mounting or framing, use only archive grade tapes and glues.
- After printing, leave prints open to the air to fully dry (24 hours is recommended). Do not stack prints on top of each other straight away.
- Using a giclée varnish or spray will help protect your print from damage, effects of UV light and environmental attack.

#### Conditions of Use

- The recommended climate for storage of all papers is 15-20°C, relative humidity of 40-60%. Always store in original packaging, out of direct sunlight and protected from moisture.
- Do not exceed temperatures of 82°C (180°F) when dry mounting.

All recommendations are for your guidance only. These are subject to our test criteria, which remain subject to change without prior notice.

**Graphic Art**  
by Innova

## Wallpaper Smooth Paste Up 180gsm

### Graphic Art Range IFA 98

#### Product Description

Inkjet coated paste up wallpaper designed for value orientated, high volume print shops using eco-solvent printers.

#### Features

- Eco-Solvent, Latex and UV Ink Compatible
- Scratch Resistant Coating
- Smooth Matte Surface
- Suitable For Indoor Application
- No Specialist Knowledge Necessary for Installation
- Compatible With PVA Based Wallpaper Adhesive

#### Applications

- Creative Wall Installations

Basic Weight (gsm)	180		
Paper Thickness (Microns)	225	Paper Thickness (Inches)	0.009
Base Material	Alpha Cellulose		
Coating Type	Eco-Solvent Matte		
Surface Texture	Smooth		
Whiteness (CIE)	92.5		
Brightness (TAPPI)	95		
OBA Content	No		
Opacity (%)	100		
pH	7.5		
Recyclable	Yes		
Ink Type	Eco Solvent, UV and Latex		
Notes	For profiles please contact your rip vendor.		

Sheets	
Rolls (25m Length, 3" Core)	60", 54", 30"

Additional Sizes are available on request, subject to order quantity.

#### Handling and Storage

- All digital Fine Art Papers and Canvases are fragile and need to be handled with extreme care. Try not to touch the surface of the paper, always hold the paper by the edges and wear cotton gloves if necessary.
- Return unused material to the original box and only store finished prints in archival quality packaging. If mounting or framing, use only archive grade tapes and glues.
- After printing, leave prints open to the air to fully dry (24 hours is recommended). Do not stack prints on top of each other straight away.
- Using a giclée varnish or spray will help protect your print from damage, effects of UV light and environmental attack.

#### Conditions of Use

- The recommended climate for storage of all papers is 15-20°C, relative humidity of 40-60%. Always store in original packaging, out of direct sunlight and protected from moisture.
- Do not exceed temperatures of 82°C (180°F) when dry mounting.

All recommendations are for your guidance only. These are subject to our test criteria, which remain subject to change without prior notice.

**Graphic Art**  
 by Innova

## Wallpaper Smooth Self Adhesive 315gsm

### Graphic Art Range IFA 99

#### Product Description

Inkjet coated self adhesive wallpaper designed for value orientated, high volume print shops using eco-solvent printers.

#### Features

- Eco-Solvent, Latex and UV Ink Compatible
- Scratch Resistant Coating
- Suitable For Indoor Application
- Removable Adhesive
- No Specialist Knowledge Necessary for Installation

#### Applications

- Creative Wall Installations

Basic Weight (gsm)	315		
Paper Thickness (Microns)	320	Paper Thickness (Inches)	0.011
Base Material	Alpha Cellulose		
Coating Type	Eco-Solvent Matte		
Surface Texture	Smooth		
Whiteness (CIE)	92.5		
Brightness (TAPPI)	96.5		
OBA Content	No		
Opacity (%)	100		
pH	7.5		
Recyclable	Yes		
Ink Type	Eco Solvent, UV and Latex		
Notes	For profiles please contact your rip vendor. All adhesive media has a tendency to delaminate from the release liner if left on the printer for too long. Remember to remove this product from the printer and secure the roll with tape after your job is complete.		

Sheets	
Rolls (25m Length, 3" Core)	60", 54", 30"

Additional Sizes are available on request, subject to order quantity.

#### Handling and Storage

- All digital Fine Art Papers and Canvases are fragile and need to be handled with extreme care. Try not to touch the surface of the paper, always hold the paper by the edges and wear cotton gloves if necessary.
- Return unused material to the original box and only store finished prints in archival quality packaging. If mounting or framing, use only archive grade tapes and glues.
- After printing, leave prints open to the air to fully dry (24 hours is recommended). Do not stack prints on top of each other straight away.
- Using a giclée varnish or spray will help protect your print from damage, effects of UV light and environmental attack.

#### Conditions of Use

- The recommended climate for storage of all papers is 15-20°C, relative humidity of 40-60%. Always store in original packaging, out of direct sunlight and protected from moisture.
- Do not exceed temperatures of 82°C (180°F) when dry mounting.

All recommendations are for your guidance only. These are subject to our test criteria, which remain subject to change without prior notice.

**Graphic Art**  
 by Innova



## Window Film Clear

### Graphic Art Range IFA 100

#### Product Description

BCrystal clear polyester film designed for value orientated, high volume print shops using eco-solvent printers.

#### Features

- Crystal Clear
- Eco-Solvent, Latex and UV Ink Compatible
- Specialist Wet Cling Coating
- Apply to Inside of Window

#### Applications

- Short Term Window Graphics
- Point of Sale Promotions

Basic Weight (gsm)	135		
Film Thickness (Microns)	125	Film Thickness (Inches)	0.007
Base Material	Polyester		
Coating Type	Eco-Solvent Gloss		
Surface Texture	Smooth		
Whiteness (CIE)	Not Applicable		
Brightness (TAPPI)	Not Applicable		
OBA Content	No		
Opacity (%)	0		
pH	Not Applicable		
Recyclable	Yes		
Ink Type	Eco Solvent, UV and Latex		
Notes	For profiles please contact your rip vendor.		

Sheets	N/A
Rolls (25m Length, 3"Core)	60", 42", 30"

Additional Sizes are available on request, subject to order quantity.

#### Handling and Storage

- All digital Fine Art Papers and Canvases are fragile and need to be handled with extreme care. Try not to touch the surface of the paper, always hold the paper by the edges and wear cotton gloves if necessary.
- Return unused material to the original box and only store finished prints in archival quality packaging. If mounting or framing, use only archive grade tapes and glues.
- After printing, leave prints open to the air to fully dry (24 hours is recommended). Do not stack prints on top of each other straight away.
- Using a giclée varnish or spray will help protect your print from damage, effects of UV light and environmental attack.

#### Conditions of Use

- The recommended climate for storage of all papers is 15-20°C, relative humidity of 40-60%. Always store in original packaging, out of direct sunlight and protected from moisture.
- Do not exceed temperatures of 82°C (180°F) when dry mounting.

All recommendations are for your guidance only. These are subject to our test criteria, which remain subject to change without prior notice.

**Graphic Art**  
 by Innova

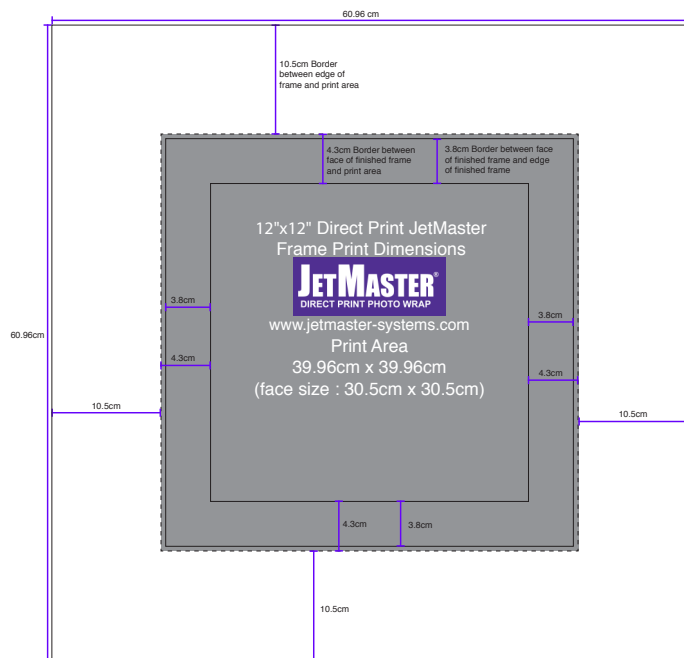
## Frame Dimensions

For use when creating files to print

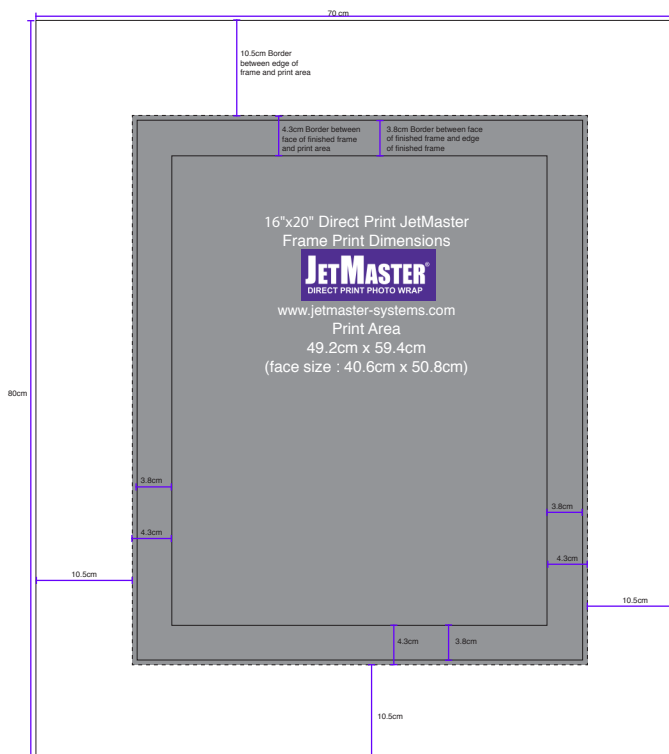
Each frame has a border of 10.5cm between the outer edge and the print area, **no part of the image should be printed on this area.**

Each frame has a border of 4.3cm between the face of the frame and the edge of the print area, **the part of the image in this area will be printed on the side of the finished frame and will overlap to the back of the frame by 0.5cm**

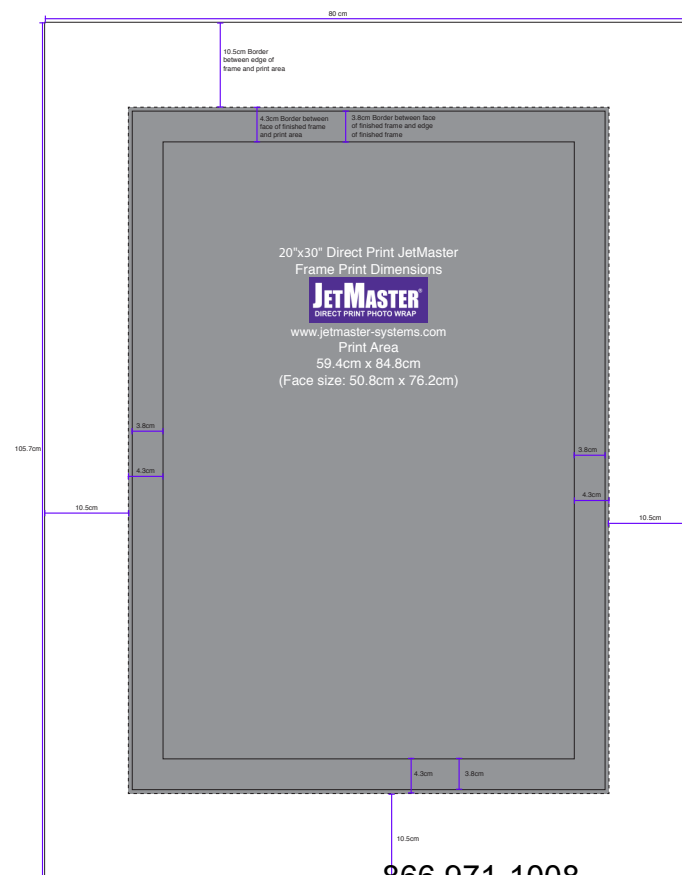
Each frame has a border of 3.8cm between the face of the frame and the edge of the finished frame, this is the exact width of the side of the frame (1.5") **any part of the image printed in this area will form the sides of the finished image.**



BCI IMAGING SUPPLIES  
 12x12 Frame



www.bciimage.com  
 16x20 Frame



866 971-1008  
 20x30 Frame

# JETMASTER®

## DIRECT PRINT PHOTO PANEL

### Design - Print - Display

Create effortless impact for your images. A lightweight alternative to solid MDF display blocks, this photo display frame can be printed directly on a UV flatbed printer; just position, print and display. The printable surface is finished in a bright white colour, no need to print white first, available in a range of sizes with a smart black matte edge finish.

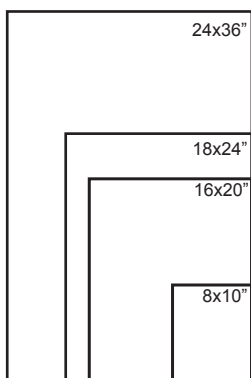
#### Applications:

- Permanent interior signage
- High impact advertising
- POS display and trade show graphics

#### General Specifications:

- Direct UV printable
- Thickness: 1 inch
- Lightweight
- Pre drilled holes on back for easy hanging

Size (Inches)	Printer Type	Depth		Quantity per box
		mm	inches	
8x10	UV Flat Bed / UV Hybrid	25	1	10
16x20	UV Flat Bed / UV Hybrid	25	1	5
18x24	UV Flat Bed / UV Hybrid	25	1	8
24x36	UV Flat Bed / UV Hybrid	25	1	5



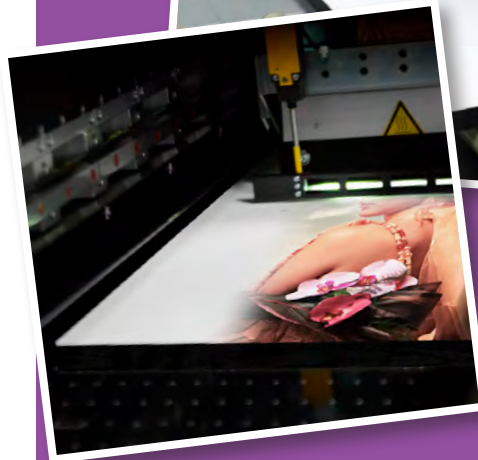
#### Printer Compatibility:

- ✓ Swiss Qprint Nayla
- ✓ Jetrix 2030
- ✓ Océ
- ✓ EFI/Vutek
- ✓ FujiFilm
- ✓ Scitex
- ✓ Mimaki
- ✓ Agfa
- ✓ Gandy

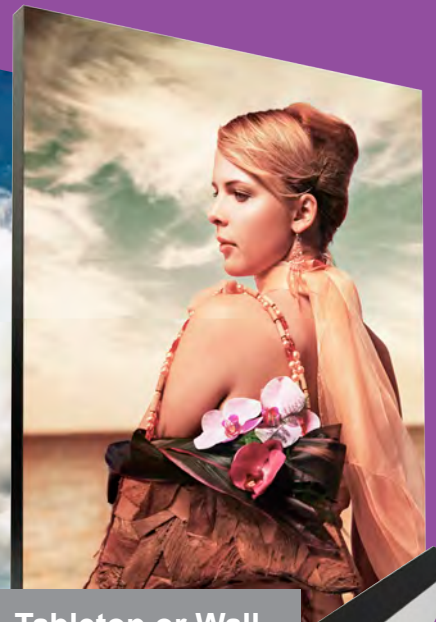
**JETMASTER®**  
Image Display Systems



The JetMaster Image Display Systems Range is manufactured and distributed by Innova Art. For more information about Innova and their range of digital media visit [www.innovaart.com](http://www.innovaart.com)



**Print Direct From  
A UV Flatbed  
Printer**



**Tabletop or Wall  
Mounted**



**Black Edging**



JetMaster Direct Print Photo Panel Available From:



# JETMASTER®

## DIRECT PRINT PHOTO WRAP

### Print Flat - Ship Flat - Fold - Display

It used to be difficult and expensive to ship canvas wraps to your customers. Now you can print and ship them flat and your customer can easily assemble the frame in their own home or office.

Available in smooth and textured options, the JetMaster Direct Print is ideal for home décor, disposable point of sale displays as well as exhibition graphics and signage. The durable and lightweight prints can be stored and shipped flat without damage and be sold flat straight from the shop floor.

Simply position the flat frame on a UV flatbed printer, print, then either ship flat or create an instant canvas frame.

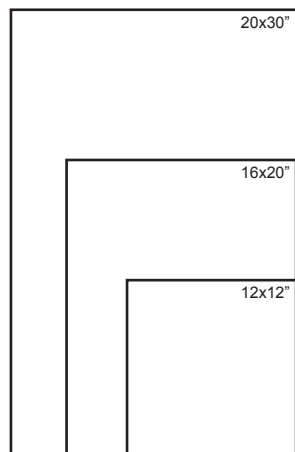
#### Applications:

- Wall Art and Photo decor
- Display for home or office
- Disposable display and trade show graphics
- Temporary signage
- Point of Sale display

#### General Specifications:

- Thickness: 2.2mm
- Double walled corrugated
- PSA back layer
- Recycled content
- Recyclable
- No tools required
- Direct print (UV)
- Simulates stretch canvas / textile
- Prints and ships flat
- Easy assembly
- Die cut holes for hanging

Size (Inches)	Printer Type	Finished Face Size		Completed Frame Depth	
		mm	inches	mm	inches
16x20	UV Flat Bed / UV Hybrid	406 x 508	16 x 20	38	1.5
20x30	UV Flat Bed / UV Hybrid	508 x 762	20 x 30	38	1.5
12x12	UV Flat Bed / UV Hybrid	305 x 305	12 x 12	38	1.5



All sizes are available in smooth and textured finishes.

#### Printer Compatibility:

- ✓ Swiss Qprint Nayla
- ✓ Jetrix 2030
- ✓ Océ
- ✓ EFI/Vutek
- ✓ FujiFilm
- ✓ Scitex
- ✓ Roland

**JETMASTER®**  
Image Display Systems



The JetMaster Image Display Systems Range is manufactured and distributed by Innova Art. For more information about Innova and their range of digital media visit [www.innovaart.com](http://www.innovaart.com)

Display System - Worldwide Patents Pending  
All brands and images are used for illustration purposes only and remain the property of the original owner.



Print Direct On A UV Flatbed Printer



No Tools Required



Replicates a Traditional Canvas Wrap



Multi Colour



Wrap



Mirror and Stretch

Create a range of edge effects for your Direct Print Photo Wrap frames using the Photoshop templates available online.

JetMaster Direct Print Photo Wrap Available From:

# JETMASTER®

## DIRECT PRINT PHOTO WRAP

Print Flat - Ship Flat - Fold - Display

Search *JetMaster Systems* on YouTube to watch the video

### Assembly Instructions



#### Step 1:

After printing, place your Direct Print Photo Wrap on a flat surface and remove all corner sections.



#### Step 2:

Turn your Direct Print Photo Wrap face down and pre fold along the scored lines.



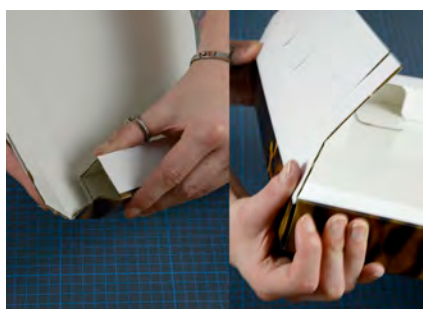
#### Step 3:

Remove all of the release liner by pulling all edges into the centre and lifting off.



#### Step 4:

Fold over each of the edges without corner tabs (the long sides on rectangular frames), push out the flaps and apply pressure to on the flaps to secure them.



#### Step 5:

Fold up one of the edges with corner tabs (the short sides on rectangular frames) so it is square and tuck in the excess corner material.



#### Step 6:

Fold over the edge with corner tabs, making sure the edge of the corner tab is aligned with the inside of the frame and apply pressure on the tabs to secure the corners.



#### Step 7:

Push out the flaps and apply pressure to secure the edge to the back of the frame, repeat steps 5-7 for the other edge with corner tabs.



#### Step 8:

Fold up the edges of the backing tray and align with the back of the frame.



#### Step 9:

Push firmly on the backing tray to insert it into place and give a neat finish to your JetMaster Direct Print Photo Wrap.

**JETMASTER®**

Image Display Systems

Technical Specifications

**JetMaster Photo Wrap Frame****JMD****Product Description**

Corrugated cardboard pre scored with a release liner to easily create a galley wrap frame.

**Features**

- Pre scored fold lines
- Release liner
- Pressure Sensitive Adhesive

**Applications**

- Canvas Effect Image Display
- Point of Sale Display
- Fine Art and Photographic Prints

**Frame**

Basic Weight (gsm)	180
Board Type	N/E Corrugated
Fluting	100% Recycled Fluting Material 90gsm
Middle Layer	Test 95gsm
Bond	Starch Based Adhesive
Thickness (mm)	2.2

**PSA Layer**

Release Liner	Siliconised PET, 50 Microns
Adhesive	Polyvinyl Acetate Copolymer
Carrier Layer	WTK 135gsm

**Conditions of Use**

- The recommended climate for storage is 15-20°C, relative humidity of 40-60%. Always store flat in original packaging, out of direct sunlight and protected from moisture.

All recommendations are for your guidance only. These are subject to our test criteria, which remain subject to change without prior notice.



## JetMaster Direct Print Photo Wrap Frame JMDP

### Product Description

Corrugated cardboard coated with UV printable surface on one side. Pre scored and die cut with a pressure sensitive adhesive on the back to easily create a galley wrap frame.

### Features

- Textured or Smooth UV compatible print surface
- Die cut with pre scored fold lines
- Pressure Sensitive Adhesive
- Recyclable

### Applications

- Canvas Effect Image Display
- Point of Sale Display
- Fine Art and Photographic Prints

### Frame

Printable Surface	180gsm, Coated Non Woven
Board Type	N/E Corrugated
Fluting	100% Recycled Fluting Material 90gsm
Middle Layer	Test 95gsm
Bond	Starch Based Adhesive
Thickness (mm)	2.2

### PSA Layer

Release Liner	Siliconised PET, 50 Microns
Adhesive	Polyvinyl Acetate Copolymer
Carrier Layer	WTK 135gsm

### Back

Board Type	N/E Corrugated
Top Liner	WTK 135gsm
Fluting	100% Recycled Fluting Material 90gsm
Middle Liner	Test 95gsm
Bottom Liner	WTK 135gsm
Bond	Starch Based Adhesive
Thickness (mm)	2.0

### Conditions of Use

- The recommended climate for storage is 15-20°C, relative humidity of 40-60%. Always store flat in original packaging, out of direct sunlight and protected from moisture.

All recommendations are for your guidance only. These are subject to our test criteria, which remain subject to change without prior notice.

## JetMaster Paper Smooth 200gsm JMP 20

### Product Description

Inkjet paper custom made for mounting on the JetMaster Display Systems Photo Wrap frame.

### Features

- Instant Dry
- Pigment and dye ink compatible
- Archival - Acid and Lignin Free
- Aqueous and Dye Ink Compatible
- Excellent colour gamut
- Exceptional D-max

### Applications

- Display using the JetMaster Photo Wrap
- Fine Art and Photographic Prints
- Canvas Alternative For Wooden Frames

Basic Weight (gsm)	200		
Paper Thickness (Microns)	285	Paper Thickness (Inches)	0.011
Base Material	Alpha Cellulose and Synthetic Fibres		
Coating Type	Matte		
Surface Texture	Smooth		
Whiteness (CIE)	89		
Brightness (TAPPI)			
OBA Content	No		
Opacity (%)	94		
pH	7.5-9.5		
Recyclable	Yes		
Print Settings*	Archival Matte Paper is recommended as a starting point		

\*Generic ICC Profiles for selected printer models are available for free download online

Sheets	A4, A3+
Rolls (30m Length)	17", 24", 44"

Additional Sizes are available on request, subject to order quantity.

### Handling and Storage

- All digital Fine Art Papers are fragile and need to be handled with extreme care. Try not to touch the surface of the paper, always hold the paper by the edges and wear cotton gloves if necessary.
- Return unused material to the original box and only store finished prints in archival quality packaging. If mounting or framing, use only archive grade tapes and glues.
- After printing, leave prints open to the air to fully dry. Do not stack prints on top of each other straight away.
- Using a giclée varnish or spray will help protect your print from damage, effects of UV light and environmental attack.

### Conditions of Use

- The recommended climate for storage of all papers is 15-20°C, relative humidity of 40-60%. Always store in original packaging, out of direct sunlight and protected from moisture.
- Do not exceed temperatures of 82°C (180°F) when dry mounting.

All recommendations are for your guidance only. These are subject to our test criteria, which remain subject to change without prior notice.

## JetMaster Paper Canvas Embossed 200gsm JMP 21

### Product Description

Inkjet paper custom made for mounting on the JetMaster Display Systems Photo Wrap frame.

### Features

- Instant Dry
- Pigment and dye ink compatible
- Archival - Acid and Lignin Free
- Aqueous and Dye Ink Compatible
- Excellent colour gamut
- Exceptional D-max

### Applications

- Display using the JetMaster Photo Wrap
- Fine Art and Photographic Prints
- Canvas Alternative For Wooden Frames

Basic Weight (gsm)	200		
Paper Thickness (Microns)	285	Paper Thickness (Inches)	0.011
Base Material	Alpha Cellulose and Synthetic Fibres		
Coating Type	Matte		
Surface Texture	Canvas Effect		
Whiteness (CIE)	89		
Brightness (TAPPI)			
OBA Content	No		
Opacity (%)	94		
pH	7.5-9.5		
Recyclable	Yes		
Print Settings*	Archival Matte Paper is recommended as a starting point		

\*Generic ICC Profiles for selected printer models are available for free download online

Sheets	A4, A3+
Rolls (30m Length)	17", 24", 44"

Additional Sizes are available on request, subject to order quantity.

### Handling and Storage

- All digital Fine Art Papers are fragile and need to be handled with extreme care. Try not to touch the surface of the paper, always hold the paper by the edges and wear cotton gloves if necessary.
- Return unused material to the original box and only store finished prints in archival quality packaging. If mounting or framing, use only archive grade tapes and glues.
- After printing, leave prints open to the air to fully dry. Do not stack prints on top of each other straight away.
- Using a giclée varnish or spray will help protect your print from damage, effects of UV light and environmental attack.

### Conditions of Use

- The recommended climate for storage of all papers is 15-20°C, relative humidity of 40-60%. Always store in original packaging, out of direct sunlight and protected from moisture.
- Do not exceed temperatures of 82°C (180°F) when dry mounting.

All recommendations are for your guidance only. These are subject to our test criteria, which remain subject to change without prior notice.

# JETMASTER®

## PAPER

The best type of media to use with the JetMaster Photo Wrap is one that is flexible and easy to wrap. This specially developed JetMaster Paper has been designed for the JetMaster Photo Wrap frames although we happen to think they look quite good on a JetMaster Photo Panel as well.

With a high polyester content and flexible coating, JetMaster Paper is tough as well as lightweight; it can even be stretched over a wooden frame like a traditional canvas.

There is next to no drying time required, unlike conventional inkjet canvases which need to dry for 24 hours before they can be stretched, JetMaster Paper is tough enough right off the printer and it is resistant to surface cracking, even on darker colours, meaning that your print looks as good when it is on the wall as the day it came off the printer.

The perfect companion to creating JetMaster Photo Wraps. Available in two textures; Smooth (JMP20) and Canvas Effect (JMP21), both are inkjet compatible.

### Applications:

- Smooth and Canvas Effect finishes for JetMaster Photo Wraps
- Smooth and Canvas Effect finishes for JetMaster Photo Panels
- Canvas alternative for wooden frames
- Paste-Up wallpaper for short term installations

### General Specifications:

- Tough
- Flexible
- Smooth or Canvas Effect surface
- ICC Profiles available
- Aqueous Inkjet Compatible

	Available Sizes					
	Sheet Format			Roll Format		
<b>JMP20</b>	A4	A3+		17"	24"	44"
<b>JMP 21</b>	A4	A3+	8.5x11"		24"	44"

Eco-Solvent compatible available on request, subject to quantity.



**JETMASTER®**  
Image Display Systems



The JetMaster Image Display Systems Range is manufactured and distributed by Innova Art. For more information about Innova and their range of digital media visit [www.innovaart.com](http://www.innovaart.com)



**Clean Corners  
When Stretched  
Over Frames**



**Smooth or  
Canvas Effect**



**Ready To Use  
Straight From The  
Printer**



JetMaster Paper Available From:



# JETMASTER®

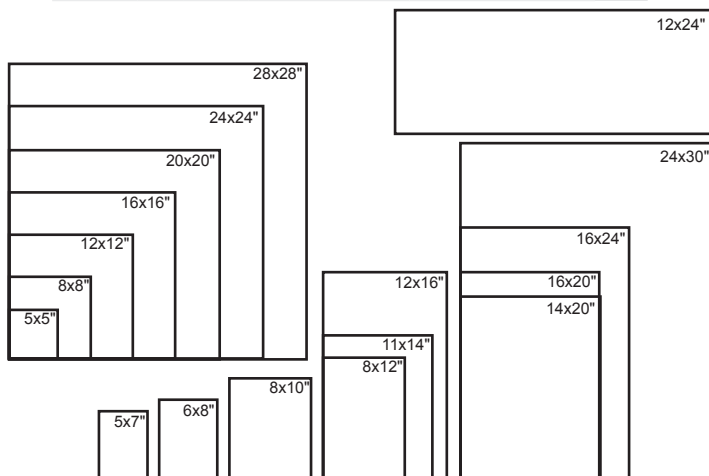
## PHOTO PANEL

### Print - Stick - Display

The **JetMaster Photo Panel** creates effortless impact for your images. A lightweight alternative to solid MDF display blocks, this photo mount has a pressure sensitive adhesive face and is available in a range of sizes with a choice of two smart matte edge finishes. JetMaster Photo Panels are simple to create and can be wall mounted or used as an attractive addition to any desk.

- Stylish frame free photo mount
- Choice of black or white matte edge finish
- Permanent pressure sensitive adhesive

Print Size (Inches)	Depth		Printer Type	Finished face size (Inches)	Quantity Per Box	
	mm	inches				
A4	25	1	Desktop	11.3x7.9	10	Black Edge Only
A3	25	1	Desktop	16.1x11.3	8	
A3+	25	1	17" roll/ A3+ sheet fed	18.6x12.5	8	
5x5	25	1	Desktop	4.7x4.7	10	Black or White Edge
5x7	25	1	Desktop	4.7x6.7	10	
6x8	25	1	Desktop	6.7x7.7	10	
8x8	25	1	Desktop	7.7x7.7	10	
8x10	25	1	Desktop	7.7x9.7	10	
8x12	25	1	Desktop	7.7x11.75	10	
11x14	25	1	17" roll/ A3+ sheet fed	10.7x13.7	10	
12x12	25	1	17" roll/ A3+ sheet fed	11.75x11.75	8	
12x16	25	1	17" roll/ A3+ sheet fed	11.75x15.75	8	
16x16	25	1	17" roll/ A2 sheet fed	15.75x15.75	8	
16x20	25	1	17" roll/ A2 sheet fed	15.75x19.7	8	
16x24	25	1	17" roll/ A2 sheet fed	15.75x23.6	8	
24x24	25	1	24" roll/ A1 sheet fed	23.6x23.6	8	
24x30	25	1	36" roll/ A1 sheet fed	23.6x31.5	5	
Available Whilst Stocks Last						
12x24	25	1	17" roll/ A2 sheet fed	11.8x23.6	8	Black or White Edge
14x20	25	1	17" roll/ A2 sheet fed	13.8x19.7	8	
20x20	25	1	24" roll/ A1 sheet fed	19.7x19.7	8	
28x28	25	1	36" roll/ A1 sheet fed	27.6x27.6	5	

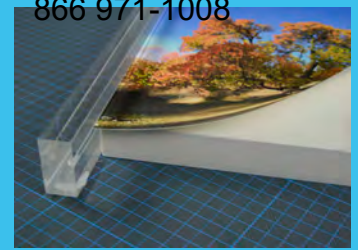


Custom sizes and edge finishes available on request subject to quantity.

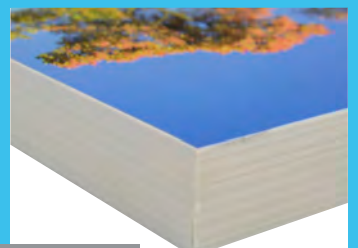
**JETMASTER®**  
Image Display Systems



The JetMaster Image Display Systems Range is manufactured and distributed by Innova Art. For more information about Innova and their range of digital media visit [www.innovaart.com](http://www.innovaart.com)



Tabletop or Wall Mounted Display



Choice of Black or White Edging

JetMaster Photo Panels look great when used with Olmec Photographic Papers - Also available from Innova Art

[www.innovaart.com](http://www.innovaart.com)



JetMaster Photo Panel Available From:

# JETMASTER®

## PHOTO PANEL

Search *JetMaster Systems* on YouTube to watch the video

Print - Stick - Display

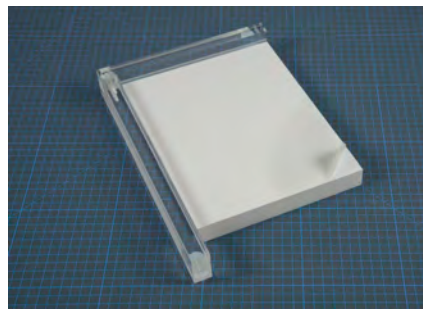
Assembly Instructions

To get the best results print your image to the size specified in the print size column of the table on the previous page. Experiment with a range of finishes on the face of your photo panel by printing your image on different medias.



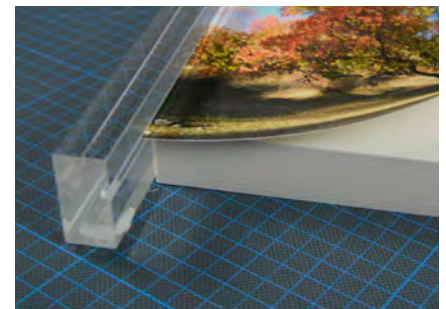
### Step 1:

Peel back a small section of the release liner.



### Step 2:

Place the photo panel into the alignment frame and fold back part of the release liner



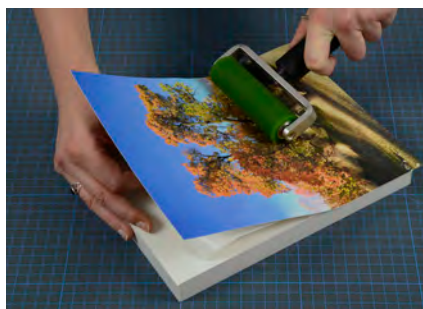
### Step 3:

Position your image using the alignment frame.



### Step 4:

Secure a corner of your print using the area of adhesive you exposed earlier



### Step 5:

Remove the rest of the release liner and apply even pressure using a roller.



### Step 6:

Place your photo panel face down on a cutting mat and use a rotary cutter or craft knife to remove the excess paper from the edges.



### Step 7:

Insert the desk stand into one of the pre drilled holes on smaller frames or use the slits on the back of larger frames to display your finished photo panel



### JetMaster Photo Panel Tools

Cutting Mats, Alignment Tools and Rollers are all available from JetMaster Display Systems, contact us for further details. Rotary Cutters and Craft Knives are available separately.



# JETMASTER<sup>®</sup>

## PHOTO WRAP

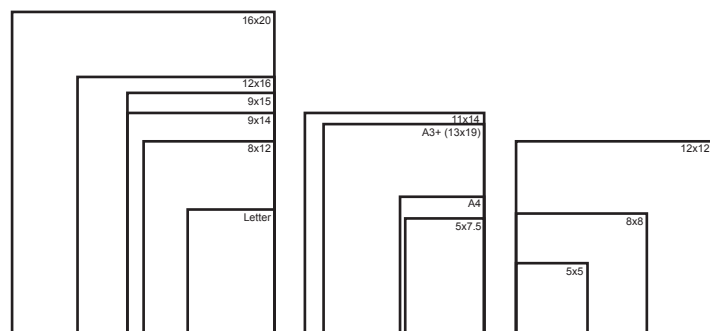
### Print - Wrap - Display

With no need for stretcher bars, glue or staples, the JetMaster Photo Wrap reduces the time it takes to produce a professional gallery wrap to minutes. Using just a craft knife and cutting mat or scissors no special skills are required and using the specially developed JetMaster Paper means you can mount your prints straight from the printer with no drying time required.

The base is pre cut laminated self adhesive board. Simply remove the release liner and press your print into place. No bubbles when mounting and no battle against untidy corners, just tuck in the excess media and keep constructing your frame. A fully assembled JetMaster Photo Wrap can be hung from just one tack.

There is no longer any need in retail for expensive outsourcing of canvas wraps to specialist print shops. You can offer your customers a one stop shopping experience and, with the online upload utility, they can have a finished gallery wrap in under half an hour.

Size (inches)	Media Size		Minimum Printer Size Required	Finished Face size		Finished Frame Depth	
	Inches	mm		Inches	mm	Inches	mm
11x14	14x17	356x432	17" roll/ A2 sheet fed	11x14	280x357	1.5	38
12x12	17.95x17.95	456x456	24" roll/ A1 sheet fed	12x12	305x305	1.5	38
16x20	22x26	559x661	24" roll/ A1 sheet fed	16x20	406x508	1.5	38
Available Whilst Stocks Last							
5x5	8x8	204x204	Desktop/ A4 sheet fed	4.8x4.8	123x123	0.8	20
5x7.5	8x10.36	204x264	Desktop/ A4 sheet fed	4.8x7.2	123x184	0.8	20
A4	8.3x11.7	210x297	Desktop/ A4 sheet fed	5.2x8.6	131x218	0.8	20
Letter	8.5x11	216x280	17" roll/ A3 sheet fed	5.3x7.8	135x198	0.8	20
8x8	12x12	305x305	17" roll/ A3+ sheet fed	7.9x7.9	203x203	1	25
8x12	12x16	305x405	17" roll/ A3+ sheet fed	7.9x12	203x305	1	25
9x14	13.25x18.17	337x462	17" roll/ A2 sheet fed	9.2x14.1	235x360	1	25
9x15	13.25x19.17	337x487	17" roll/ A2 sheet fed	8.9x15	228x381	1	25
A3+ (13x19)	13x19	329x483	17" roll/ A3+ sheet fed	9.8x13	249x332	0.8	20
12x12	16.73x16.73	425x425	17" roll/ A1 sheet fed	12x12	305x305	1.1	30
12x16	16.73x20.73	425x527	17" roll/ A1 sheet fed	12x16	305x406	1.1	30
16x20	29.72x24.72	755x628	36" roll/ A0 sheet fed	16x20	406x508	1.1	30

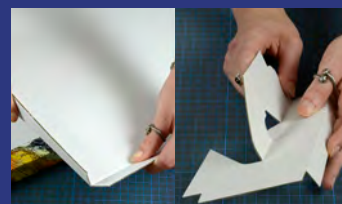
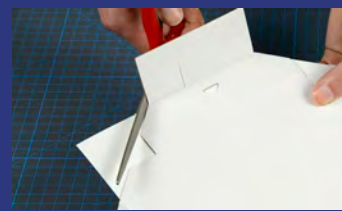


Print media is not included with frames.

**JETMASTER<sup>®</sup>**  
Image Display Systems



The JetMaster Image Display Systems Range is manufactured and distributed by Innova Art. For more information about Innova and their range of digital media visit [www.innovaart.com](http://www.innovaart.com)  
Display System - Worldwide Patents Pending



Replicates a  
Traditional  
Canvas Wrap

Desktop  
or Wall  
Mounted

### Free Online JetMaster Print Utility

Create edge effects on your Photo Wrap print with ease using our free online upload utility. In three simple steps you will have a print ready PDF to download and save.



JetMaster Photo Wrap Available From:

# JETMASTER®

## PHOTO WRAP

Print - Wrap - Display

Search *JetMaster Systems* on  
YouTube to watch the video

Assembly Instructions



**Step 1:**  
Remove part of the release liner and fold it back.



**Step 2:**  
Align your print with the interior perforated line around the edge of the frame.



**Step 3:**  
Carefully fold back your print and remove the rest of the release liner.



**Step 4:**  
Place your print over the exposed adhesive and apply pressure using your hand or a roller to secure it in place.



**Step 5:**  
Pre fold all the creased lines on the back of the frame, ensure the face of your print is on a clean work surface.



**Step 6:**  
Use scissors to cut straight across each of the corner sections to remove the excess media.



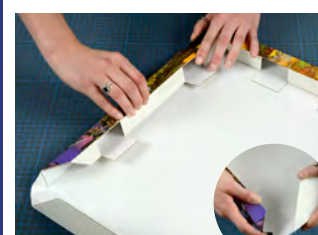
**Step 7:**  
Fold up one edge of the frame and release the preformed tabs.



**Step 8:**  
Fold the edge around until it forms a square.



**Step 9:**  
Keeping the edge square apply firm pressure to secure the tabs to the back of the frame.



**Step 10:**  
Repeat this process for each edge tucking in the media at each corner.



**Step 11:**  
Gently support each corner to keep it square and apply the corner sticker to keep it in place.



**Step 12; Wall Hanging Frames:**  
Fold the edges of the backing tray up.



**Step 13; Wall Hanging Frames:**  
Place the backing tray into the back of the frame and press firmly in the centre to secure it to the exposed adhesive.



**Step 12; Desktop Frames:**  
Fold the edges of the backing tray down and release the desk stand.



**Step 13; Desktop Frames:**  
Place the backing tray into the back of the frame, taking care to make sure the desk stand is free.

Display System - Worldwide Patents Pending

All brands and images are used for illustration purposes only and remain the property of the original owner.



## Photo Papers Lightweight

### Photo Gloss Lightweight 190gsm OLM62



#### Description:

This Bright White Photo RC inkjet paper provides excellent image quality, on its smooth gloss surface.

Applications include; soft proofing, albums and portfolios, poster and graphic art reproduction

Weight (GSM)	190
Base Material	Resin Coated
Coating Type	Microporous Gloss
Surface Texture	Smooth high gloss
Thickness (Microns / inches)	207 / 0.008
Whiteness (CIE)	152
Brightness (TAPPI)	112
OBA content	Yes
pH	7.5-9.5
<b>Sheets Size:</b> Availability / sheets per box	DIN A4 / A3 / A3+ / A2 - 100 sheets (US sizes available on request)
<b>Roll Size:</b> Availability / Length / Core size	17" (432mm) / 24" (610mm) / 44" (1118mm) / 30m / 2" core
<b>Printer/Ink Compatibility</b>	Compatible with all commercial thermal and piezo inkjet printers using water-based dye and pigment-based inks such as Epson, Canon and Hewlett-Packard
<b>Recommended printer Settings</b>	Photo black inks with generic media setting of 'Photo paper gloss/ 'Photo paper glossy' or similar. ICC colour profiles are available from the website.

#### Directions for Use:

##### Paper Handling:

- Avoid touching the coated surface of the paper before and after printing, and wear cotton gloves if necessary.
- Avoid exposure to high temperatures, high levels of humidity and moisture. These factors can affect the drying time of some Olmec™ products.

##### Paper Storage:

- Remove prints from the tray after printing; do not allow them to be stacked.
- Prints should be allowed to dry in air, preferably left uncovered for 24 hours to allow the residual liquid from the inks to evaporate.
- In cases where stacking is unavoidable, a paper interleaf should be placed between each print.

##### Conditions of Use:

- Where possible, all paper should be stored and used within the following range of environmental conditions:  
Temperature = 10°- 35°Centigrade  
Relative Humidity = 30% - 80%
- Unused paper should be stored in its original packaging, out of direct sunlight under normal climatic conditions.

*All recommendations and product indications are for your guidance, and are subject to our test criteria.*

## PROFESSIONAL PHOTOGRAPHIC INKJET PAPER

## Photo Papers Lightweight

### Photo Lustre Lightweight 190gsm OLM68

#### Description:

This Bright White Photo RC inkjet paper provides excellent image quality, on its smooth lustre surface.

Applications include; soft proofing, albums and portfolios, poster and graphic art reproduction



Weight (GSM)	190
Base Material	Resin Coated
Coating Type	Microporous Lustre
Surface Texture	Slightly textured stippled lustre
Thickness (Microns / inches)	207 / 0.008
Whiteness (CIE)	152
Brightness (TAPPI)	112
OBA content	Yes
pH	7.5-9.5
<b>Sheets Size:</b> Availability / sheets per box	DIN A4 / A3 / A3+ / A2 - 100 sheets (US sizes available on request)
<b>Roll Size:</b> Availability / Length / Core size	17" (432mm) / 24" (610mm) / 44" (1118mm) / 30m / 2" core
<b>Printer/Ink Compatibility</b>	Compatible with all commercial thermal and piezo inkjet printers using water-based dye and pigment-based inks such as Epson, Canon and Hewlett-Packard
<b>Recommended printer Settings</b>	Photo black inks with generic media setting of 'Photo paper lustre/ 'Photo paper Semi-matte' or similar. ICC colour profiles are available from the website.

#### Directions for Use:

##### Paper Handling:

- Avoid touching the coated surface of the paper before and after printing, and wear cotton gloves if necessary.
- Avoid exposure to high temperatures, high levels of humidity and moisture. These factors can affect the drying time of some Olmec™ products.

##### Paper Storage:

- Remove prints from the tray after printing; do not allow them to be stacked.
- Prints should be allowed to dry in air, preferably left uncovered for 24 hours to allow the residual liquid from the inks to evaporate.
- In cases where stacking is unavoidable, a paper interleaf should be placed between each print.

##### Conditions of Use:

- Where possible, all paper should be stored and used within the following range of environmental conditions:  
Temperature = 10°- 35°Centigrade  
Relative Humidity = 30% - 80%
- Unused paper should be stored in its original packaging, out of direct sunlight under normal climatic conditions.

*All recommendations and product indications are for your guidance, and are subject to our test criteria.*

## PROFESSIONAL PHOTOGRAPHIC INKJET PAPER

## Photo Papers Midweight

### Photo Gloss Midweight 240gsm OLM63

#### Description:

A Neutral White Photo RC inkjet paper that provides excellent image quality, on its high gloss surface. Its smooth surface makes it ideal for portraiture.

Applications include; Photography, portrait printing, posters and graphic art reproduction



© Keith Cooper

Weight (GSM)	240
Base Material	Resin Coated
Coating Type	Microporous Gloss
Surface Texture	Smooth high gloss
Thickness (Microns / inches)	236 / 0.016
Whiteness (CIE)	
Brightness (TAPPI)	
OBA content	Yes
pH	7.5-9.5
Sheets Size: Availability / sheets per box	DIN A4 / A3 / A3+ / A2 - 50 sheets (US sizes available on request)
Roll Size: Availability / Length / Core size	17" (432mm) / 24" (610mm) / 44" (1118mm) / 30m / 2" core
Printer/Ink Compatibility	Compatible with all commercial thermal and piezo inkjet printers using water-based dye and pigment-based inks such as Epson, Canon and Hewlett-Packard
Recommended printer Settings	Photo black inks with generic media setting of 'Photo Gloss heavyweight' / 'Premium Photo paper Glossy' or similar. ICC colour profiles are available from the website.

#### Directions for Use:

##### Paper Handling:

- Avoid touching the coated surface of the paper before and after printing, and wear cotton gloves if necessary.
- Avoid exposure to high temperatures, high levels of humidity and moisture. These factors can affect the drying time of some Olmec<sup>TM</sup> products.

##### Paper Storage:

- Remove prints from the tray after printing; do not allow them to be stacked.
- Prints should be allowed to dry in air, preferably left uncovered for 24 hours to allow the residual liquid from the inks to evaporate.
- In cases where stacking is unavoidable, a paper interleaf should be placed between each print.

##### Conditions of Use:

- Where possible, all paper should be stored and used within the following range of environmental conditions:  
Temperature = 10° - 35°C Centigrade  
Relative Humidity = 30% - 80%
- Unused paper should be stored in its original packaging, out of direct sunlight under normal climatic conditions.

*All recommendations and product indications are for your guidance, and are subject to our test criteria.*

## PROFESSIONAL PHOTOGRAPHIC INKJET PAPER

## Photo Papers Midweight

### Photo Satin Midweight 240gsm OLM64

#### Description:

This Neutral White Photo RC inkjet paper provides excellent image quality, on its smooth satin surface.

Applications include; Photography, portrait printing, posters and graphic art reproduction



Weight (GSM)	240
Base Material	Resin Coated
Coating Type	Microporous Satin
Surface Texture	Smooth satin
Thickness (Microns / inches)	236 / 0.016
Whiteness (CIE)	145
Brightness (TAPPI)	
OBA content	Yes
pH	7.5-9.5
<b>Sheets Size:</b> Availability / sheets per box	DIN A4 / A3 / A3+ / A2 - 50 sheets (US sizes available on request)
<b>Roll Size:</b> Availability / Length / Core size	17" (432mm) / 24" (610mm) / 44" (1118mm) / 30m / 2" core
<b>Printer/Ink Compatibility</b>	Compatible with all commercial thermal and piezo inkjet printers using water-based dye and pigment-based inks such as Epson, Canon and Hewlett-Packard
<b>Recommended printer Settings</b>	Photo black inks with generic media setting of 'Photo semi-gloss heavyweight' / 'Premium Photo paper semi-gloss' or similar. ICC colour profiles are available from the website.

#### Directions for Use:

##### Paper Handling:

- Avoid touching the coated surface of the paper before and after printing, and wear cotton gloves if necessary.
- Avoid exposure to high temperatures, high levels of humidity and moisture. These factors can affect the drying time of some Olmec™ products.

##### Paper Storage:

- Remove prints from the tray after printing; do not allow them to be stacked.
- Prints should be allowed to dry in air, preferably left uncovered for 24 hours to allow the residual liquid from the inks to evaporate.
- In cases where stacking is unavoidable, a paper interleaf should be placed between each print.

##### Conditions of Use:

- Where possible, all paper should be stored and used within the following range of environmental conditions:  
Temperature = 10°- 35°Centigrade  
Relative Humidity = 30% - 80%
- Unused paper should be stored in its original packaging, out of direct sunlight under normal climatic conditions.

*All recommendations and product indications are for your guidance, and are subject to our test criteria.*

## PROFESSIONAL PHOTOGRAPHIC INKJET PAPER



## Photo Papers Heavyweight

### Photo Gloss Heavyweight 260gsm OLM60

#### Description:

This Ultra White Photo RC inkjet paper provides excellent image quality on its smooth high gloss surface. It has a microporous coating which is dry to the touch when printed and water resistant.

Applications include; Photography, portrait printing, posters and graphic art reproduction.



Weight (GSM)	260
Base Material	Resin Coated
Coating Type	Microporous gloss
Surface Texture	Smooth high gloss
Thickness (Microns / inches)	265 / 0.016
Whiteness (CIE)	152
Brightness (TAPPI)	112
OBA content	Yes
pH	7.5-9.5
<b>Sheets Size:</b> Availability / sheets per box	DIN A4 / A3 / A3+ / A2 - 50 sheets (US sizes available on request)
<b>Roll Size:</b> Availability / Length / Core size	17" (432mm) / 24" (610mm) / 44" (1118mm) / 60" (1524mm) - 30m - 3" core
<b>Printer/Ink Compatibility</b>	Compatible with all commercial thermal and piezo inkjet printers using water-based dye and pigment-based inks such as Epson, Canon and Hewlett-Packard
<b>Recommended printer Settings</b>	Photo black inks with generic media setting of 'Photo Gloss heavyweight' / 'Premium Photo paper Glossy' or similar. ICC colour profiles are available from the website.

#### Directions for Use:

##### Paper Handling:

- Avoid touching the coated surface of the paper before and after printing, and wear cotton gloves if necessary.
- Avoid exposure to high temperatures, high levels of humidity and moisture. These factors can affect the drying time of some Olmec<sup>TM</sup> products.

##### Paper Storage:

- Remove prints from the tray after printing; do not allow them to be stacked.
- Prints should be allowed to dry in air, preferably left uncovered for 24 hours to allow the residual liquid from the inks to evaporate.
- In cases where stacking is unavoidable, a paper interleaf should be placed between each print.

##### Conditions of Use:

- Where possible, all paper should be stored and used within the following range of environmental conditions:  
Temperature = 10° - 35°C Centigrade  
Relative Humidity = 30% - 80%
- Unused paper should be stored in its original packaging, out of direct sunlight under normal climatic conditions.

*All recommendations and product indications are for your guidance, and are subject to our test criteria.*

## PROFESSIONAL PHOTOGRAPHIC INKJET PAPER

## Photo Papers Heavyweight

### Photo Satin Heavyweight 260gsm OLM61

#### Description:

This Ultra White Photo RC inkjet paper provides excellent image quality, on its smooth satin surface. Its Microporous coating is touch dry when printed and water resistant. It is ideal for a more subtle finish but still gives the same saturated colours and great tonal range as our gloss heavyweight.

Applications include; Photography, portrait printing, posters and graphic art reproduction



Weight (GSM)	260
Base Material	Resin Coated
Coating Type	Microporous Satin
Surface Texture	Smooth Satin
Thickness (Microns / inches)	265 / 0.016
Whiteness (CIE)	152
Brightness (TAPPI)	112
OBA content	Yes
pH	7.5-9.5
<b>Sheets Size:</b> Availability / sheets per box	DIN A4 / A3 / A3+ / A2 - 50 sheets (US sizes available on request)
<b>Roll Size:</b> Availability / Length / Core size	17" (432mm) / 24" (610mm) / 44" (1118mm) / 60" (1524mm) - 30m - 3" core
<b>Printer/Ink Compatibility</b>	Compatible with all commercial thermal and piezo inkjet printers using water-based dye and pigment-based inks such as Epson, Canon and Hewlett-Packard
<b>Recommended printer Settings</b>	Photo black inks with generic media setting of 'Photo Semi-gloss heavyweight' / 'Premium Photo paper Semi-matte' or similar. ICC colour profiles are available from the website.

#### Directions for Use:

##### Paper Handling:

- Avoid touching the coated surface of the paper before and after printing, and wear cotton gloves if necessary.
- Avoid exposure to high temperatures, high levels of humidity and moisture. These factors can affect the drying time of some Olmec™ products.

##### Paper Storage:

- Remove prints from the tray after printing; do not allow them to be stacked.
- Prints should be allowed to dry in air, preferably left uncovered for 24 hours to allow the residual liquid from the inks to evaporate.
- In cases where stacking is unavoidable, a paper interleaf should be placed between each print.

##### Conditions of Use:

- Where possible, all paper should be stored and used within the following range of environmental conditions:  
Temperature = 10°- 35°Centigrade  
Relative Humidity = 30% - 80%
- Unused paper should be stored in its original packaging, out of direct sunlight under normal climatic conditions.

*All recommendations and product indications are for your guidance, and are subject to our test criteria.*

## PROFESSIONAL PHOTOGRAPHIC INKJET PAPER

## Photo Papers Heavyweight

### Photo Lustre Heavyweight 260gsm OLM59

#### Description:

This Ultra White Photo RC inkjet paper provides excellent image quality, on its stippled lustre surface. Its Microporous coating is touch dry when printed and water resistant.

Applications include; Photography, portrait printing, posters and graphic art reproduction



Weight (GSM)	260
Base Material	Resin Coated
Coating Type	Microporous Satin
Surface Texture	Slightly textured lustre
Thickness (Microns / inches)	265 / 0.016
Whiteness (CIE)	152
Brightness (TAPPI)	112
OBA content	Yes
pH	7.5-9.5
<b>Sheets Size:</b> Availability / sheets per box	DIN A4 / A3 / A3+ / A2 - 50 sheets (US sizes available on request)
<b>Roll Size:</b> Availability / Length / Core size	17" (432mm) / 24" (610mm) / 44" (1118mm) / 60" (1524mm) - 30m - 3" core
<b>Printer/Ink Compatibility</b>	Compatible with all commercial thermal and piezo inkjet printers using water-based dye and pigment-based inks such as Epson, Canon and Hewlett-Packard
<b>Recommended printer Settings</b>	Photo black inks with generic media setting of 'Photo Semi-gloss heavyweight' / 'Premium Photo paper Semi-matte' or similar. ICC colour profiles are available from the website.

#### Directions for Use:

##### Paper Handling:

- Avoid touching the coated surface of the paper before and after printing, and wear cotton gloves if necessary.
- Avoid exposure to high temperatures, high levels of humidity and moisture. These factors can affect the drying time of some Olmec™ products.

##### Paper Storage:

- Remove prints from the tray after printing; do not allow them to be stacked.
- Prints should be allowed to dry in air, preferably left uncovered for 24 hours to allow the residual liquid from the inks to evaporate.
- In cases where stacking is unavoidable, a paper interleaf should be placed between each print.

##### Conditions of Use:

- Where possible, all paper should be stored and used within the following range of environmental conditions:  
Temperature = 10°- 35°Centigrade  
Relative Humidity = 30% - 80%
- Unused paper should be stored in its original packaging, out of direct sunlight under normal climatic conditions.

*All recommendations and product indications are for your guidance, and are subject to our test criteria.*

## PROFESSIONAL PHOTOGRAPHIC INKJET PAPER

## Photo Papers Double Sided

### Photo Gloss Double Sided 250gsm OLM65



#### Description:

A Bright White Photo RC inkjet paper provides excellent image quality, on its smooth gentle gloss surface. The only RC paper in the range to be coated on both sides, it is ideal for albums and portfolio books.

Applications include; Photography, album printing, greetings cards, graphic art and promotional materials.

Weight (GSM)	250
Base Material	Resin Coated
Coating Type	Microporous Gloss
Surface Texture	Subtle gloss
Thickness (Microns / inches)	245 / 0.016
Whiteness (CIE)	145
Brightness (TAPPI)	
OBA content	Yes
pH	7.5-9.5
Sheets Size: Availability / sheets per box	DIN A4 / A3 - 50 sheets (US sizes available on request)
Roll Size: Availability / Length / Core size	N/A
Printer/Ink Compatibility	Compatible with all commercial thermal and piezo inkjet printers using water-based dye and pigment-based inks such as Epson, Canon and Hewlett-Packard
Recommended printer Settings	Photo black inks with generic media setting of 'Photo semi-gloss heavyweight' / 'Premium Photo paper semi-gloss' or similar. ICC colour profiles are available from the website.

#### Directions for Use:

##### Paper Handling:

- Avoid touching the coated surface of the paper before and after printing, and wear cotton gloves if necessary.
- Avoid exposure to high temperatures, high levels of humidity and moisture. These factors can affect the drying time of some Olmec<sup>TM</sup> products.

##### Paper Storage:

- Remove prints from the tray after printing; do not allow them to be stacked.
- Prints should be allowed to dry in air, preferably left uncovered for 24 hours to allow the residual liquid from the inks to evaporate.
- In cases where stacking is unavoidable, a paper interleaf should be placed between each print.

##### Conditions of Use:

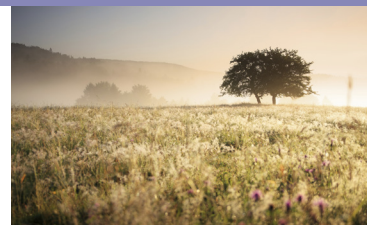
- Where possible, all paper should be stored and used within the following range of environmental conditions:  
Temperature = 10°- 35°Centigrade  
Relative Humidity = 30% - 80%
- Unused paper should be stored in its original packaging, out of direct sunlight under normal climatic conditions.

*All recommendations and product indications are for your guidance, and are subject to our test criteria.*

## PROFESSIONAL PHOTOGRAPHIC INKJET PAPER

## Photo Papers Matte

### Photo Matte Archival 230gsm OLM67



#### Description:

This Ultra White Photo Matte inkjet paper provides excellent image quality and sharpness, on its reflection free surface.

Applications include; Photography, portrait printing, posters and graphic art reproduction

Weight (GSM)	230
Base Material	Alpha cellulose
Coating Type	Matte
Surface Texture	Smooth matte
Thickness (Microns / inches)	245 / 0.016
Whiteness (CIE)	130
Brightness (TAPPI)	
OBA content	Yes
pH	7.5-9.5
<b>Sheets Size:</b> Availability / sheets per box	DIN A4 / A3 / A3+ / A2 - 100 sheets (US sizes available on request)
<b>Roll Size:</b> Availability / Length / Core size	17" (432mm) / 24" (610mm) / 44" (1118mm) / 60" (1524mm) - 30m - 3" core
<b>Printer/Ink Compatibility</b>	Compatible with all commercial thermal and piezo inkjet printers using water-based dye and pigment-based inks such as Epson, Canon and Hewlett-Packard
<b>Recommended printer Settings</b>	Photo black inks with generic media setting of 'Photo Paper Matte' / 'Premium Matte Photo paper' or similar. ICC colour profiles are available from the website.

#### Directions for Use:

##### Paper Handling:

- Avoid touching the coated surface of the paper before and after printing, and wear cotton gloves if necessary.
- Avoid exposure to high temperatures, high levels of humidity and moisture. These factors can affect the drying time of some Olmec<sup>TM</sup> products.

##### Paper Storage:

- Remove prints from the tray after printing; do not allow them to be stacked.
- Prints should be allowed to dry in air, preferably left uncovered for 24 hours to allow the residual liquid from the inks to evaporate.
- In cases where stacking is unavoidable, a paper interleaf should be placed between each print.

##### Conditions of Use:

- Where possible, all paper should be stored and used within the following range of environmental conditions:  
Temperature = 10°- 35°Centigrade  
Relative Humidity = 30% - 80%
- Unused paper should be stored in its original packaging, out of direct sunlight under normal climatic conditions.

*All recommendations and product indications are for your guidance, and are subject to our test criteria.*

## PROFESSIONAL PHOTOGRAPHIC INKJET PAPER

## Photo Papers Speciality

### Photo Pearl Premium 310gsm OLM70



#### Description:

A premium, luxurious Ultra White RC inkjet paper that will do any image justice. It has a slightly textured stippled surface to give a subtle silky sheen to your finished image. It has a Miroporus coating and is touch dry when printed and water resistant.

Applications include; Photography, portrait printing, posters and exhibition printing.

Weight (GSM)	310
Base Material	Resin Coated
Coating Type	Microporous Pearl
Surface Texture	Slightly textured pearl
Thickness (Microns / inches)	299 / 0.012
Whiteness (CIE)	145
Brightness (TAPPI)	
OBA content	Yes
pH	7.5-9.5
Sheets Size: Availability / sheets per box	DIN A4 / A3 / A3+ / A2 - 50 sheets (US sizes available on request)
Roll Size: Availability / Length / Core size	17" (432mm) / 24" (610mm) / 44" (1118mm) - 25m - 3" core
Printer/Ink Compatibility	Compatible with all commercial thermal and piezo inkjet printers using water-based dye and pigment-based inks such as Epson, Canon and Hewlett-Packard
Recommended printer Settings	Photo black inks with generic media setting of 'Photo Semi-gloss / Lustre' / 'Premium Photo paper Semi-matte' or similar. ICC colour profiles are available from the website.

#### Directions for Use:

##### Paper Handling:

- Avoid touching the coated surface of the paper before and after printing, and wear cotton gloves if necessary.
- Avoid exposure to high temperatures, high levels of humidity and moisture. These factors can affect the drying time of some Olmec<sup>TM</sup> products.

##### Paper Storage:

- Remove prints from the tray after printing; do not allow them to be stacked.
- Prints should be allowed to dry in air, preferably left uncovered for 24 hours to allow the residual liquid from the inks to evaporate.
- In cases where stacking is unavoidable, a paper interleaf should be placed between each print.

##### Conditions of Use:

- Where possible, all paper should be stored and used within the following range of environmental conditions:  
Temperature = 10° - 35°C Centigrade  
Relative Humidity = 30% - 80%
- Unused paper should be stored in its original packaging, out of direct sunlight under normal climatic conditions.

*All recommendations and product indications are for your guidance, and are subject to our test criteria.*

## PROFESSIONAL PHOTOGRAPHIC INKJET PAPER



## Photo Papers Speciality

### Photo Silk Fibre Baryta 310gsm OLM69

#### Description:

The Microporous silk coating on a true barium sulphate layer is the perfect inkjet equivalent of a traditional baryta paper. Natural White with a gentle gloss surface gives excellent colour gamut and D-max.

Applications include; Photography, portrait printing, posters and exhibition printing.



Weight (GSM)	310
Base Material	Alpha Cellulose
Coating Type	Microporous Silk
Surface Texture	Smooth Satin
Thickness (Microns / inches)	315 / 0.012
Whiteness (CIE)	100
Brightness (TAPPI)	96
OBA content	Yes
pH	7.5-9.5
<b>Sheets Size:</b> Availability / sheets per box	DIN A4 / A3 / A3+ / A2 - 50 sheets (US sizes available on request)
<b>Roll Size:</b> Availability / Length / Core size	17" (432mm) / 24" (610mm) / 44" (1118mm) - 15m - 3" core
<b>Printer/Ink Compatibility</b>	Compatible with all commercial thermal and piezo inkjet printers using water-based dye and pigment-based inks such as Epson, Canon and Hewlett-Packard
<b>Recommended printer Settings</b>	Photo black inks with generic media setting of 'Photo Semi-gloss / Lustre' / 'Premium Photo paper Semi-matte' or similar. ICC colour profiles are available from the website.

#### Directions for Use:

##### Paper Handling:

- Avoid touching the coated surface of the paper before and after printing, and wear cotton gloves if necessary.
- Avoid exposure to high temperatures, high levels of humidity and moisture. These factors can affect the drying time of some Olmec<sup>TM</sup> products.

##### Paper Storage:

- Remove prints from the tray after printing; do not allow them to be stacked.
- Prints should be allowed to dry in air, preferably left uncovered for 24 hours to allow the residual liquid from the inks to evaporate.
- In cases where stacking is unavoidable, a paper interleaf should be placed between each print.

##### Conditions of Use:

- Where possible, all paper should be stored and used within the following range of environmental conditions:  
Temperature = 10°- 35°Centigrade  
Relative Humidity = 30% - 80%
- Unused paper should be stored in its original packaging, out of direct sunlight under normal climatic conditions.

*All recommendations and product indications are for your guidance, and are subject to our test criteria.*

## PROFESSIONAL PHOTOGRAPHIC INKJET PAPER

## Photo Papers Speciality

### Photo Metallic Gloss 260gsm OLM71



#### Description:

This Neutral white RC paper has a pearlescent finish with a smooth gloss microporous coating to give excellent colour saturation, gamut and D-max.

Applications include; Photography, portrait printing, posters and exhibition printing.

Weight (GSM)	260
Base Material	Resin Coated
Coating Type	Microporous Gloss
Surface Texture	Smooth pearlescent gloss
Thickness (Microns / inches)	267 / 0.011
Whiteness (CIE)	80
Brightness (TAPPI)	82
OBA content	No
pH	7.5-9.5
<b>Sheets Size:</b> Availability / sheets per box	DIN A4 / A3 / A3+ / A2 - 50 sheets (US sizes available on request)
<b>Roll Size:</b> Availability / Length / Core size	17" (432mm) / 24" (610mm) / 44" (1118mm) - 30m - 3" core
<b>Printer/Ink Compatibility</b>	Compatible with all commercial thermal and piezo inkjet printers using water-based dye and pigment-based inks such as Epson, Canon and Hewlett-Packard
<b>Recommended printer Settings</b>	Photo black inks with generic media setting of 'Premium Photo Gloss' / 'Premium Photo paper Semi-matte' or similar. ICC colour profiles are available from the website.

#### Directions for Use:

##### Paper Handling:

- Avoid touching the coated surface of the paper before and after printing, and wear cotton gloves if necessary.
- Avoid exposure to high temperatures, high levels of humidity and moisture. These factors can affect the drying time of some Olmec™ products.

##### Paper Storage:

- Remove prints from the tray after printing; do not allow them to be stacked.
- Prints should be allowed to dry in air, preferably left uncovered for 24 hours to allow the residual liquid from the inks to evaporate.
- In cases where stacking is unavoidable, a paper interleaf should be placed between each print.

##### Conditions of Use:

- Where possible, all paper should be stored and used within the following range of environmental conditions:  
Temperature = 10° - 35°C Centigrade  
Relative Humidity = 30% - 80%
- Unused paper should be stored in its original packaging, out of direct sunlight under normal climatic conditions.

*All recommendations and product indications are for your guidance, and are subject to our test criteria.*

## PROFESSIONAL PHOTOGRAPHIC INKJET PAPER

## Photo Papers Speciality

### Photo Metallic Lustre 260gsm OLM72

#### Description:

This Neutral white RC paper has a pearlescent finish with a smooth, slightly stippled, lustre microporous coating, to give excellent colour saturation, gamut and D-max.

Applications include; Photography, portrait printing, posters and exhibiton printing.



Weight (GSM)	260
Base Material	Resin Coated
Coating Type	Microporous Gloss
Surface Texture	Smooth pearlescant gloss
Thickness (Microns / inches)	267 / 0.011
Whiteness (CIE)	80
Brightness (TAPPI)	82
OBA content	No
pH	7.5-9.5
Sheets Size: Availability / sheets per box	DIN A4 / A3 / A3+ / A2 - 50 sheets (US sizes available on request)
Roll Size: Availability / Length / Core size	17" (432mm) / 24" (610mm) / 44" (1118mm) - 30m - 3" core
Printer/Ink Compatibility	Compatible with all commercial thermal and piezo inkjet printers using water-based dye and pigment-based inks such as Epson, Canon and Hewlett-Packard
Recommended printer Settings	Photo black inks with generic media setting of 'Photo Semi-gloss / Lustre' / 'Premium Photo paper Semi-matte' or similar. ICC colour profiles are available from the website.

#### Directions for Use:

##### Paper Handling:

- Avoid touching the coated surface of the paper before and after printing, and wear cotton gloves if necessary.
- Avoid exposure to high temperatures, high levels of humidity and moisture. These factors can affect the drying time of some Olmec<sup>TM</sup> products.

##### Paper Storage:

- Remove prints from the tray after printing; do not allow them to be stacked.
- Prints should be allowed to dry in air, preferably left uncovered for 24 hours to allow the residual liquid from the inks to evaporate.
- In cases where stacking is unavoidable, a paper interleaf should be placed between each print.

##### Conditions of Use:

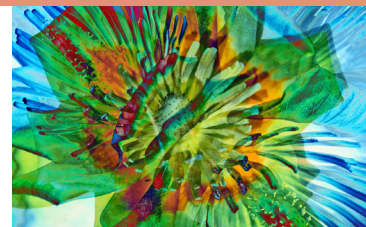
- Where possible, all paper should be stored and used within the following range of environmental conditions:  
Temperature = 10° - 35°C Centigrade  
Relative Humidity = 30% - 80%
- Unused paper should be stored in its original packaging, out of direct sunlight under normal climatic conditions.

*All recommendations and product indications are for your guidance, and are subject to our test criteria.*

## PROFESSIONAL PHOTOGRAPHIC INKJET PAPER

## Fine Art Papers & Photo Canvas

### Photo Canvas Matte 350gsm OLM35



#### Description:

A true inkjet canvas with a flexible matte coating. It's high white base gives excellent colour gamut and D-max, ideal for stretching and for use with water based and solvent varnishes.

Applications include; Fine art limited and open editions, stretched canvas and gallery wraps, also compatible with the JetMaster Photo Wrap by Innova.

Weight (GSM)	350
Base Material	Polycotton
Coating Type	Matte
Surface Texture	Textured true canvas weave
Thickness (Microns / inches)	405 / 0.016
Whiteness (CIE)	152
Brightness (TAPPI)	88
OBA content	Yes
pH	7.5-9.5
Sheets Size: Availability / sheets per box	N/A
Roll Size: Availability / Length / Core size	17" (432mm) / 24" (610mm) / 44" (1118mm) / 60" (1524mm) - 15m - 3" core
Printer/Ink Compatibility	Compatible with all commercial thermal and piezo inkjet printers using water-based dye and pigment-based inks such as Epson, Canon and Hewlett-Packard
Recommended printer Settings	Matte black inks with generic media setting of 'Fine Art Canvas' or similar. ICC colour profiles are available from the website.

#### Directions for Use:

##### Paper Handling:

- Avoid touching the coated surface of the paper before and after printing, and wear cotton gloves if necessary.
- Avoid exposure to high temperatures, high levels of humidity and moisture. These factors can affect the drying time of some Olmec™ products.

##### Paper Storage:

- Remove prints from the tray after printing; do not allow them to be stacked.
- Prints should be allowed to dry in air, preferably left uncovered for 24 hours to allow the residual liquid from the inks to evaporate.
- In cases where stacking is unavoidable, a paper interleaf should be placed between each print.

##### Conditions of Use:

- Where possible, all paper should be stored and used within the following range of environmental conditions:  
Temperature = 10° - 35°C Centigrade  
Relative Humidity = 30% - 80%
- Unused paper should be stored in its original packaging, out of direct sunlight under normal climatic conditions.

*All recommendations and product indications are for your guidance, and are subject to our test criteria.*

## PROFESSIONAL PHOTOGRAPHIC INKJET PAPER

## Fine Art Papers & Photo Canvas

### Photo Canvas Gloss 380gsm OLM36



#### Description:

A true inkjet canvas with a flexible microporous glossy coating. The Natural white base gives enhanced tonal range and D-max. Ideal for stretching, instant dry and Water resistant.

Applications include; Fine art limited and open editions, stretched canvas and gallery wraps, also compatible with the JetMaster Photo Wrap by Innova.

Weight (GSM)	380
Base Material	Polycotton
Coating Type	Microporous Gloss
Surface Texture	Textured true canvas weave
Thickness (Microns / inches)	450 / 0.016
Whiteness (CIE)	85
Brightness (TAPPI)	86
OBA content	Yes
pH	7.5-9.5
Sheets Size: Availability / sheets per box	N/A
Roll Size: Availability / Length / Core size	17" (432mm) / 24" (610mm) / 44" (1118mm) / 60" (1524mm) - 15m - 3" core
Printer/Ink Compatibility	Compatible with all commercial thermal and piezo inkjet printers using water-based dye and pigment-based inks such as Epson, Canon and Hewlett-Packard
Recommended printer Settings	Photo black inks with generic media setting of 'Photo glossy Canvas' / 'Satin Canvas' or similar. ICC colour profiles are available from the website.

#### Directions for Use:

##### Paper Handling:

- Avoid touching the coated surface of the paper before and after printing, and wear cotton gloves if necessary.
- Avoid exposure to high temperatures, high levels of humidity and moisture. These factors can affect the drying time of some Olmec<sup>TM</sup> products.

##### Paper Storage:

- Remove prints from the tray after printing; do not allow them to be stacked.
- Prints should be allowed to dry in air, preferably left uncovered for 24 hours to allow the residual liquid from the inks to evaporate.
- In cases where stacking is unavoidable, a paper interleaf should be placed between each print.

##### Conditions of Use:

- Where possible, all paper should be stored and used within the following range of environmental conditions:  
Temperature = 10° - 35°C Centigrade  
Relative Humidity = 30% - 80%
- Unused paper should be stored in its original packaging, out of direct sunlight under normal climatic conditions.

*All recommendations and product indications are for your guidance, and are subject to our test criteria.*

## PROFESSIONAL PHOTOGRAPHIC INKJET PAPER



## Fine Art Papers & Photo Canvas

### Fine Art Soft White Cotton 275gsm OLM15



#### Description:

The High white, 25% cotton content of this fine art paper give it a luxurious high quality feel. It has a slightly textured surface, and is fully archival.

Applications include; Fine art limited and open edition prints, fine art reproduction, portfolios, albums and greetings cards.

Weight (GSM)	275
Base Material	Cotton and Alpha Cellulose mix
Coating Type	Matte
Surface Texture	Fine Art Matte slightly textured
Thickness (Microns / inches)	414 / 0.016
Whiteness (CIE)	106
Brightness (TAPPI)	96
OBA content	Yes
pH	7.5-9.5
<b>Sheets Size:</b> Availability / sheets per box	DIN A4 / A3 / A3+ / A2 - 50 sheets (US sizes available on request)
<b>Roll Size:</b> Availability / Length / Core size	17" (432mm) / 24" (610mm) / 44" (1118mm) / 60" (1524mm) - 15m - 3" core
<b>Printer/Ink Compatibility</b>	Compatible with all commercial thermal and piezo inkjet printers using water-based dye and pigment-based inks such as Epson, Canon and Hewlett-Packard
<b>Recommended printer Settings</b>	Matte black inks with generic media setting of 'Fine Art Textured' or similar. ICC colour profiles are available from the website.

#### Directions for Use:

##### Paper Handling:

- Avoid touching the coated surface of the paper before and after printing, and wear cotton gloves if necessary.
- Avoid exposure to high temperatures, high levels of humidity and moisture. These factors can affect the drying time of some Olmec<sup>TM</sup> products.

##### Paper Storage:

- Remove prints from the tray after printing; do not allow them to be stacked.
- Prints should be allowed to dry in air, preferably left uncovered for 24 hours to allow the residual liquid from the inks to evaporate.
- In cases where stacking is unavoidable, a paper interleaf should be placed between each print.

##### Conditions of Use:

- Where possible, all paper should be stored and used within the following range of environmental conditions:  
Temperature = 10° - 35°C Centigrade  
Relative Humidity = 30% - 80%
- Unused paper should be stored in its original packaging, out of direct sunlight under normal climatic conditions.

*All recommendations and product indications are for your guidance, and are subject to our test criteria.*

## PROFESSIONAL PHOTOGRAPHIC INKJET PAPER

## YouTac Textile Eco Solvent, Latex and UV

### IYT-102

#### Product Description

High white eco-solvent/latex/UV ink compatible adhesive textile, featuring YouTac intelligent adhesive, repositionable, removable and leaves no residue on non-porous and many porous surfaces.

#### Features

- High White
- Superior Print Quality
- PET Dimensionally Stable Fabric
- Porous Surface Allows For Easy Removal Of Air Bubbles
- Eco-Solvent, Latex and UV Ink Compatible
- Tear Resistant
- Adhesive Leaves No Residue
- Sticks To All Non-Porous and Many Porous Surfaces
- Excellent Colour Gamut

#### Applications

- Indoor and Outdoor Display
- Large Scale Wall Graphics
- Temporary Signage
- Repositionable Posters
- Wall Art
- Décor
- Exhibitors/Trade Show Graphics

Basic Weight (gsm) inc. Release Liner	300	Basic Weight (gsm) ex. Release Liner	170
Media Thickness (μ) inc. Release Liner	295	Media Thickness (μ) ex. Release Liner	160
Media Thickness (Inches) inc. Release Liner	0.457	Media Thickness (Inches) ex. Release Liner	0.062
Base Material	Polyester Fabric		
Coating Type	Eco-Solvent, Latex and UV Compatible Ink Receptive Coating		
Surface Texture	Smooth Matte Textile Weave		
Whiteness (CIE)	135.0		
Brightness (TAPPI) inc. Release Liner	98.41	Brightness (TAPPI) ex. Release Liner	100.58
Opacity (%) inc. Release Liner	98.0	Opacity (%) ex. Release Liner	80.1
Media Setting*	Banner		
Recyclable	Yes		

\* This is recommended as a starting point

Rolls (30.5m/100ft Length, 3" Core)	30", 42", 54", 60"
-------------------------------------	--------------------

Additional Sizes are available on request, subject to order quantity.

#### Handling, Use and Storage

- For best results use only on firm, sound painted surfaces.
- If unsure of the surface quality, make a small test print before applying to a large area.
- Do not apply to varnished wood without testing a small area first.
- Results will vary on highly textured or porous surfaces.
- Return unused material to the original packaging for safe storage.
- Remember to remove this product from the printer and secure the roll with tape after your job is complete.
- Use the lowest possible heat settings to avoid overheating the adhesive.
- If applying to a freshly painted surface, allow the paint to fully dry before installation (check paint manufacturers instructions for drying time).

All recommendations are for your guidance only. These are subject to our test criteria, which remain subject to change without prior notice.

- For porous, textured, rough or unpainted surfaces we recommend applying a test print for 48 hours before a longer term installation. If the material shows signs of unsticking from the surface, we suggest that you do not continue with a large scale installation without preparing the surface.
- After printing, do not stack prints on top of each other before they are fully dry.

#### Conditions of Use

- The recommended climate for storage of all media is 15-20°C, relative humidity of 40-60%. Always store in original packaging, out of direct sunlight and protected from moisture. Print room conditions should be in the range of 15-30°C, 30-65% relative humidity.

## YouTac Textile Aqueous

### IYT-101

#### Product Description

High white aqueous ink compatible adhesive textile, featuring YouTac intelligent adhesive, repositionable, removable and leaves no residue on non-porous and many porous surfaces.

#### Features

- High White
- Superior Print Quality
- PET Dimensionally Stable Fabric
- Porous Surface Allows For Easy Removal Of Air Bubbles
- Eco-Solvent, Latex and UV Ink Compatible
- Tear Resistant
- Adhesive Leaves No Residue
- Sticks To All Non-Porous and Many Porous Surfaces
- Excellent Colour Gamut

#### Applications

- Indoor and Outdoor Display
- Large Scale Wall Graphics
- Temporary Signage
- Repositionable Posters
- Wall Art
- Décor
- Exhibitors/Trade Show Graphics

Basic Weight (gsm) inc. Release Liner	280	Basic Weight (gsm) ex. Release Liner	170
Media Thickness (μ) inc. Release Liner	300	Media Thickness (μ) ex. Release Liner	160
Media Thickness (Inches) inc. Release Liner	0.464	Media Thickness (Inches) ex. Release Liner	0.062
Base Material	Polyester Fabric		
Coating Type	Water Based (Aqueous) Ink Receptive Coating		
Surface Texture	Smooth Matte Textile Weave		
Whiteness (CIE)	150.0		
Brightness (TAPPI) inc. Release Liner	100.85	Brightness (TAPPI) ex. Release Liner	107.52
Opacity (%) inc. Release Liner	89.7	Opacity (%) ex. Release Liner	75.1
Media Setting*	Banner		
Recyclable	Yes		

\* This is recommended as a starting point

Rolls (30.5m/100ft Length, 3" Core)	17", 24", 36", 42", 60"
-------------------------------------	-------------------------

Additional Sizes are available on request, subject to order quantity.

#### Handling, Use and Storage

- For best results use only on firm, sound painted surfaces.
- If unsure of the surface quality, make a small test print before applying to a large area.
- Do not apply to varnished wood without testing a small area first.
- Results will vary on highly textured or porous surfaces.
- Return unused material to the original packaging for safe storage.
- Remember to remove this product from the printer and secure the roll with tape after your job is complete.
- If applying to a freshly painted surface, allow the paint to fully dry before installation (check paint manufacturers instructions for drying time).
- For porous, textured, rough or unpainted surfaces we recommend applying a test print for 48 hours before a longer term installation. If

the material shows signs of unsticking from the surface, we suggest that you do not continue with a large scale installation without preparing the surface.

- After printing, do not stack prints on top of each other before they are fully dry.

#### Conditions of Use

- The recommended climate for storage of all media is 15-20°C, relative humidity of 40-60%. Always store in original packaging, out of direct sunlight and protected from moisture. Print room conditions should be in the range of 15-30°C, 30-65% relative humidity.

All recommendations are for your guidance only. These are subject to our test criteria, which remain subject to change without prior notice.