

FOAMBOARD

ENCORE[®]
PRODUCTS



With the creation of Fine Art Boards, EnCore® Products continues to expand designer, picture framer, printer and fabricator capabilities with Foam Board collections that provide variety, versatility, quality and cost efficiency.

Engineered for flawless performance, EnCore foam boards are indispensable for imparting a professional look to finished products. By stressing variety, versatility and value, we give you more foam board choices: clay-coated and a unique collection of textured surfaces, self-adhesive boards, rigid, firm and crushable polystyrene cores and heat-activated boards. Handling is effortless. Cutting is clean and precise, and some can also be scored, folded, or die cut to create items with a dimensional effect. All varieties are CFC free – and our products contain an industry-leading percentage of recycled content in keeping with our Commitment to Sustainability. Trust EnCore to deliver responsive customer service and the technical support that makes the big jobs easy to handle.

All EnCore Foam Boards are available in special cut sizes. Volume minimums do apply. Please contact customer service for inquiries.

ENCORE®
PRODUCTS

EnCore® is Taking Care of Business with these Foam Board Essentials:



CONTENTS

Fine Art Boards. 4-5

Rigid MightyCore® Foam Board 6

MightyCore® Pressure Sensitive Foam Board 7

PilloCore® Foam Board 8

Custom Cut Foam Board 9

1/2" Thick Foam Board 10

Black-on-Black® Foam Board 11

White Foam Board 12

Extreme White Foam Board™ 13

SingleStep® Heat-Activated Foam Board 14

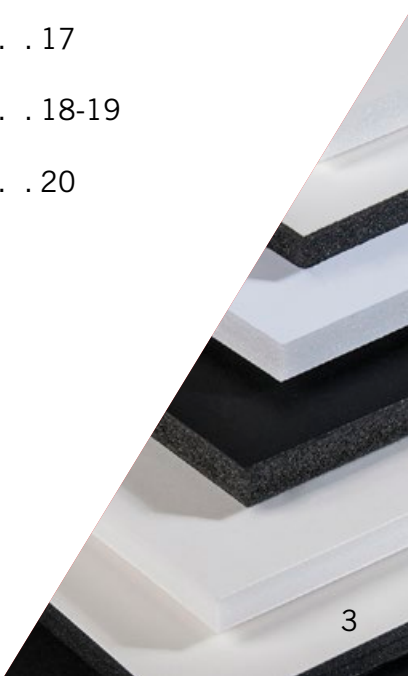
Pressure Sensitive Adhesive Foam Board 15

Masterpiece Collection Foam Board 16

Colored Foam Board 17

Our Commitment to Sustainability 18-19

Contact Information. 20





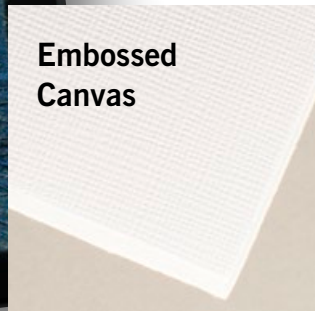
Fine Art Boards

**Add Instant Dimension
to Your Products with
the Fine Textures of Art
Boards. Enhance the
Artistic Quality of Your
Output.**

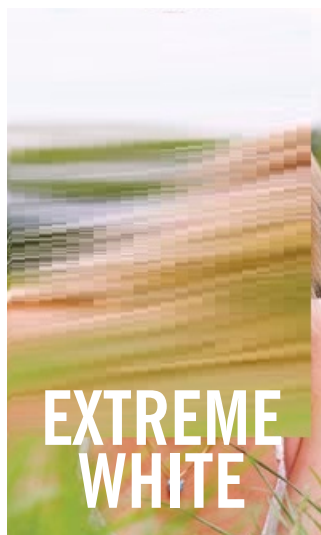
The Value & Performance You Expect from EnCore®

With artistic demands and creative needs in mind, we have developed a collection of foam boards featuring unique surfaces. Prints, digital artwork, logos, patterns, art reproductions and photography are just a few examples of what may be directly printed to EnCore Fine Art Boards.

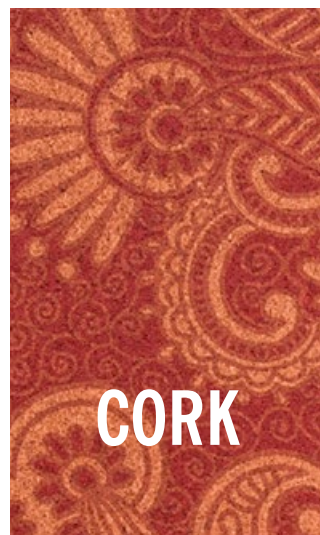
**Embossed
Canvas**



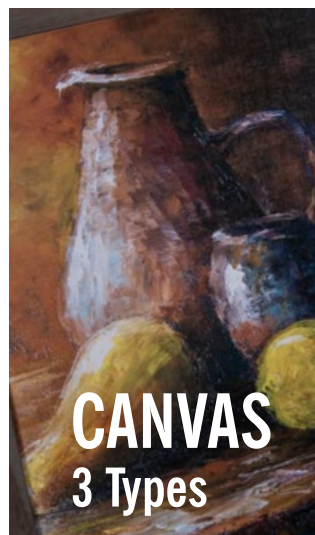
**Natural
Canvas**



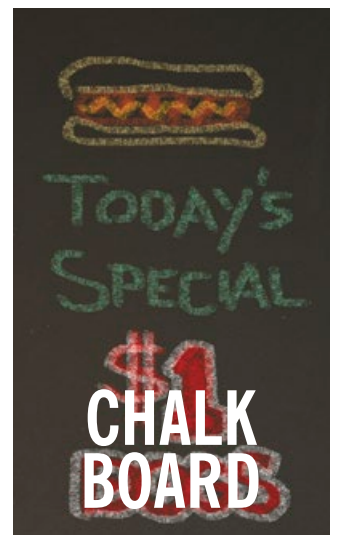
**EXTREME
WHITE**



CORK



**CANVAS
3 Types**



**CHALK
BOARD**



Use Artboards to create the look of classic stretched canvas.

Fine Art Boards

SPECS — CANVAS 1/4"
Surface: Real Artist Canvas on one side
Core: White rigid foam
Thickness: 1/4"
Standard sheet size: 24" x 36" and 48" x 96"

SPECS — CORK 3/8"
Surface: Cork on one side
Core: White foam
Thickness: 3/8"
Standard sheet size range from: 20" x 30" to 48" x 96"

SPECS — EMBOSSED CANVAS 1/4"
Surface: Embossed Canvas on one side
Core: White rigid foam
Thickness: 1/4"
Standard sheet size: 48" x 96"

SPECS — CHALKBOARD 3/16"
Surface: Chalkboard on one side
Core: White foam
Thickness: 3/16"
Standard sheet size range from: 20" x 30" to 40" x 60"

SPECS — EMBOSSED CANVAS 3/16"
Surface: Embossed Canvas on two sides
Core: White foam
Thickness: 3/16"
Standard sheet size: 48" x 96" and 60" x 120"

SPECS — EXTREME WHITE FOR PHOTOGRAPHY
Surface: Bright White, clay-coated
Core: White foam
Thickness: 3/16"
Standard sheet size: 48" x 96"

High volume cut-to-size sheets available upon request

Call: 1-800-873-4868

APPLICATIONS	Digital Imaging	Exhibits	Framing	Laminating	Litho mounting	Painting	Air Brushing	POP Displays	Screen printing	Signs	Vinyl lettering	Models
Canvas 1/4"	▲	▲				▲	▲	▲	▲	▲		
Embossed Canvas 1/4"	▲	▲				▲	▲	▲	▲	▲		
Embossed Canvas 3/16"	▲	▲				▲	▲	▲	▲	▲		
Cork	▲	▲				▲	▲	▲	▲	▲		
Chalkboard	▲	▲				▲	▲	▲	▲	▲		
Extreme White <small>FOR PHOTOGRAPHY</small>	▲	▲	▲	▲	▲	▲	▲	▲	▲	▲	▲	▲

FABRICATIONS	Hand cutting	Die cutting	Embossing	Scoring	Machine cutting
Canvas 1/4"	▲			▲	▲
Embossed Canvas 1/4"	▲			▲	▲
Embossed Canvas 3/16"	▲			▲	▲
Cork	▲			▲	▲
Chalkboard	▲			▲	▲
Extreme White <small>FOR PHOTOGRAPHY</small>	▲	▲	▲	▲	▲



Rigid MightyCore® Foam Board

Rigid MightyCore® delivers structural strength. This foam board is heavy-duty.

MightyCore® is the strongest product now available for indoor use. Its extra-rigid core of dense polystyrene is free of toxic chemicals so it's safer to use for the big

jobs. No surface preparation is required for laminating, mounting and screen or digital printing, so projects are handled quickly, efficiently and most economically. Solid White is your must-have basic – its uses are endless. White-on-Black contrasts black edge and white surfaces for dramatic effect – Solid Black adds bold contrast to mounting projects.

SPECIFICATIONS

Surface: White or Black smooth paper

Core: White or Black rigid foam

Thickness: 3/16", 1/4" and 1/2"

Varieties: White, Black-On-Black®, White-Black-White, and White-Black-Black

Standard sheet sizes range from 24" x 36" to 48" x 96"

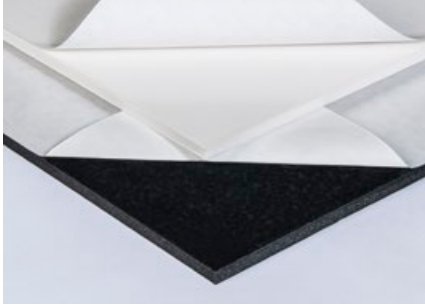
High volume cut-to-size sheets quickly available upon request

Call: 1-800-873-4868



APPLICATIONS	Digital Imaging	Exhibits	Framing	Laminating	Litho mounting	Painting	Air Brushing	POP Displays	Screen printing	Signs	Vinyl lettering	Models
White MightyCore 3/16"	▲	▲		▲	▲	▲	▲	▲	▲	▲	▲	▲
White MightyCore 1/4"	▲	▲		▲	▲	▲	▲	▲	▲	▲	▲	▲
White MightyCore 1/2"	▲	▲		▲	▲	▲	▲	▲	▲	▲	▲	▲
White-Black-White 1/4"	▲	▲		▲	▲	▲	▲	▲	▲	▲	▲	▲
Black MightyCore 3/16"	▲	▲		▲	▲	▲	▲	▲	▲	▲	▲	▲
Black MightyCore 1/4"	▲	▲		▲	▲	▲	▲	▲	▲	▲	▲	▲
Black MightyCore 1/2"	▲	▲		▲	▲	▲	▲	▲	▲	▲	▲	▲
White-Black-Black 1/2"	▲	▲		▲	▲	▲	▲	▲	▲	▲	▲	▲

FABRICATIONS	Hand cutting	Die cutting	Embossing	Scoring	Machine cutting
White MightyCore 3/16"	▲	▲	▲	▲	▲
White MightyCore 1/4"	▲	▲	▲	▲	▲
White MightyCore 1/2"	▲			▲	▲
White-Black-White 1/4"	▲	▲	▲	▲	▲
Black MightyCore 3/16"	▲	▲		▲	▲
Black MightyCore 1/4"	▲	▲		▲	▲
Black MightyCore 1/2"	▲			▲	▲
White-Black-Black 1/2"	▲			▲	▲

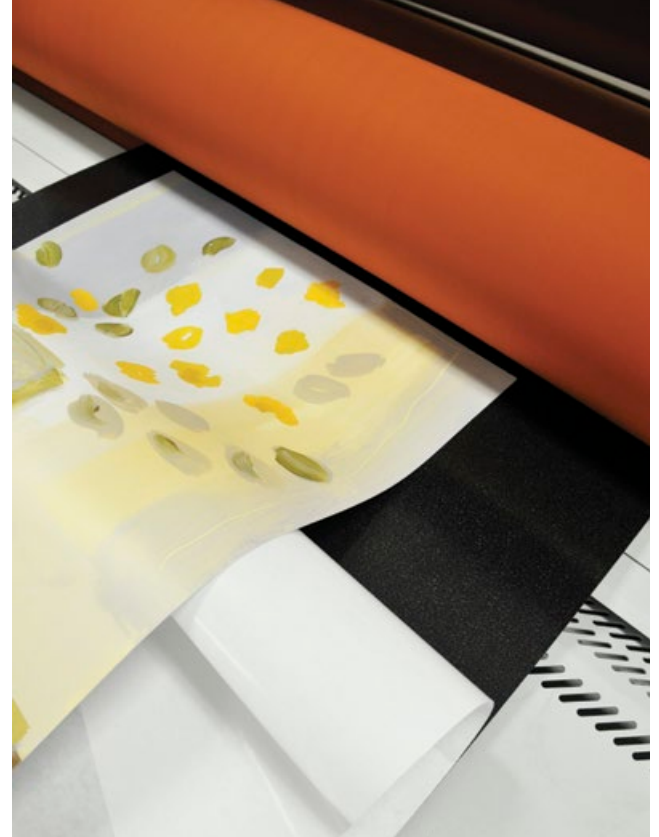


MightyCore® Pressure Sensitive Foam Board

High-tack self-adhesive adds value to MightyCore®

EnCore® makes MightyCore® even more practical for permanent mounting with the addition of a pressure sensitive coating.

Our heavy-duty foam board's structural strength meets permanent adhesive's super stick to safely handle heavy and hard-to-hold items. To improve production time, the protective liner peels away easily to quickly ready the board for mounting. Made for use in a roller laminator or for cold mounting applications. Solid White and Black-on-Black.



SPECIFICATIONS

Surface: White or Black smooth paper

Core: White or Black rigid foam

Thickness: 3/16"

Standard sheet sizes are 24" x 36" and 32" x 40"

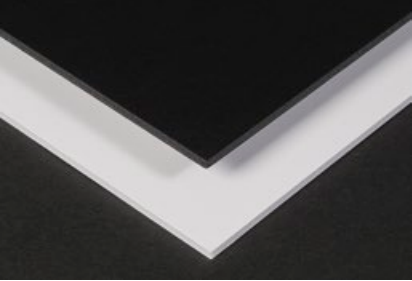
High volume cut-to-size sheets quickly available upon request

Call: 1-800-873-4868



APPLICATIONS	Digital Imaging	Exhibits	Framing	Laminating	Litho mounting	Painting	Air Brushing	POP Displays	Screen printing	Signs	Vinyl lettering	Models
MightyCore Pressure Sensitive				▲								

FABRICATIONS	Hand cutting	Die cutting	Embossing	Scoring	Machine cutting
MightyCore Pressure Sensitive	▲				▲



PilloCore® Foam Board

Add dimension and special effects to any image with PilloCore® Foam Board. Emboss it. Deboss it. Die-cut it for a puffed profile.

PilloCore® Foam Board can add design interest to every project. Its foam core is specially formulated to be crushable so that, when it is die-cut, all edges stay tightly compressed to create pillowing. The board is lightweight, sturdy, and warp-resistant. Its flawless surface accepts a variety of media and allows you to get creative by embossing or debossing for attention-getting dimensional detail.



SPECIFICATIONS

Surface: White or Black facing paper

Core: White or Black crushable foam

Thickness: 3/16"

Standard sheet size range from: 40" x 60" to 48" x 96"

High volume cut-to-size sheets quickly available upon request

Call: 1-800-873-4868



APPLICATIONS	Digital Imaging	Exhibits	Framing	Laminating	Litho mounting	Painting	Air Brushing	POP Displays	Screen printing	Signs	Vinyl lettering	Models
PilloCore Foam Board	▲	▲				▲	▲	▲	▲	▲	▲	▲

FABRICATIONS	Hand cutting	Die cutting	Embossing	Scoring	Machine cutting
PilloCore Foam Board	▲	▲	▲	▲	▲



EnCore® offers cut-to-size sheets

Don't see the board size needed for your application? No worries, EnCore® has the capability to manufacture your required size.

Choose from these EnCore Product Lines*:

- White
- Extreme White Foam Board™
- Black-on-Black®
- White-Black-Black
- Premium Tac, Repositionable Pressure Sensitive Adhesive
- Permanent Pressure Sensitive Adhesive
- SingleStep® Heat-Activated Adhesive
- Masterpiece Collection®- Antique White Acid-Free, Bright White Acid-Free, 100% Cotton Rag
- PilloCore®
- Fine Art Boards

** A 10,000 square foot minimum per size is required.*

For more information, please contact EnCore Customer Service at 1-800-873-4868

How Some Customers Use Cut-to-size Volume Orders

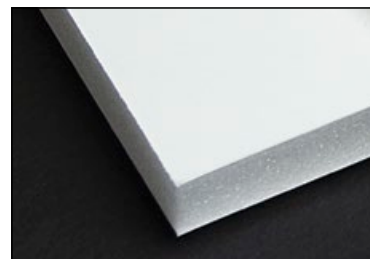
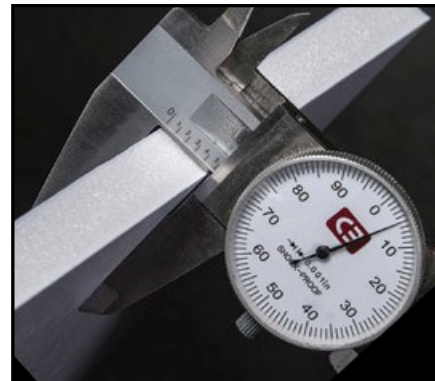
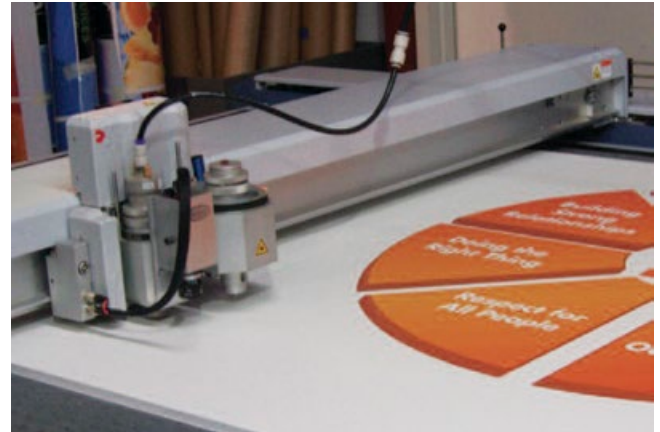
- Custom "auto-convert" prints using Artboards for Home Decor Retailers
- Durable Brand Color Panels
- Point-of-Purchase Systems
- Big-Box Store Signage



1/2" Thick Foam Board

EnCore® manufactures a consistent 1/2" thickness

When a more sturdy board is needed, EnCore has the answer. Our 1/2" foam board is available in White, Extreme White, Black-on-Black®, and White-Black-Black. Its resilient polystyrene “memory” core bounces back once cut giving a clean, uniform edge, while providing more rigidity than 3/16" thickness. The white surfaces are clay-coated, and the Black-On-Black® surfaces are acid-free.



SPECIFICATIONS	
Surface:	White or Black Smooth Paper
Core:	White or Black foam
Thickness:	1/2"
Varieties:	White, Black-on-Black®, White-Black-Black and Extreme White
Standard sheet sizes	range from 20" x 30" to 60" x 120"
High volume cut-to-size sheets	quickly available upon request
Call: 1-800-873-4868	

APPLICATIONS	Digital Imaging	Exhibits	Framing	Laminating	Litho Mounting	Painting	Air Brushing	POP Displays	Screen printing	Signs	Vinyl Lettering	Models
White Foam Board 1/2"	▲	▲	▲	▲	▲	▲	▲	▲	▲	▲	▲	▲
Black-on-Black 1/2"	▲	▲	▲	▲	▲	▲	▲	▲	▲	▲	▲	▲
White-Black-Black 1/2"	▲	▲	▲	▲	▲	▲	▲	▲	▲	▲	▲	▲
Extreme White 1/2"	▲	▲	▲	▲	▲	▲	▲	▲	▲	▲	▲	▲

FABRICATIONS	Hand cutting	Die cutting	Embossing	Scoring	Machine cutting
White Foam Board 1/2"	▲			▲	▲
Black-on-Black 1/2"	▲		▲	▲	▲
White-Black-Black 1/2"	▲			▲	▲
Extreme White 1/2"	▲	▲	▲	▲	▲

Black-on-Black® Foam Board

Black Foam Cores give you the Cutting Edge

By sandwiching a deep black polystyrene core between smooth surface papers, EnCore® inspires a whole new category of foam board effects.

Go totally black for ultra dramatic effects

To create this solid black version EnCore layers rich black foam between smooth, black, acid-free paper, front and back. This process eliminates the need to retouch or disguise cut edges to achieve a totally black look.

Use White-Black-Black for dimensional impact

This unique foam board construction features smooth white surface paper to keep applied colors true. When cut, the edges of its deep black foam core are artfully revealed.

SPECIFICATIONS

Surface: White or Black facing paper

Core: Black foam

Thickness: 3/16" and 1/2"

Varieties: Black-On-Black® and White-Black-Black

Standard sheet sizes range from (Solid Black: 20" x 30" to 48" x 120") and (White-Black-Black: 48" x 96")

High volume cut-to-size sheets quickly available upon request

Call: 1-800-873-4868



APPLICATIONS	Digital Imaging	Exhibits	Framing	Laminating	Litho mounting	Painting	Air Brushing	POP Displays	Screen printing	Signs	Vinyl lettering	Models
Black-on-Black FB 3/16"	▲	▲	▲	▲	▲	▲	▲	▲	▲	▲	▲	▲
Black-on-Black FB 1/2"	▲	▲	▲	▲	▲	▲	▲	▲	▲	▲	▲	▲
White-Black-Black FB 1/2"	▲	▲	▲	▲	▲	▲	▲	▲	▲	▲	▲	▲

FABRICATIONS	Hand cutting	Die cutting	Embossing	Scoring	Machine cutting
Black-on-Black FB 3/16"	▲	▲	▲	▲	▲
Black-on-Black FB 1/2"	▲	▲	▲	▲	▲
White-Black-Black FB 1/2"	▲	▲	▲	▲	▲

White Foam Board

EnCore® Gives You Choices. White Foam Board comes in 4 thicknesses and a wide range of standard sheet sizes.

EnCore's white clay-coated foam board is lightweight yet surprisingly strong and rigid to resist denting and crushing. Its resilient polystyrene "Memory" core is totally free of environmentally harmful toxins and it bounces back after cutting to keep the board uniform from edge to edge. White is the perfect base for projects requiring color clarity.

SPECIFICATIONS

Surface: White, clay-coated

Core: White foam

Thickness: 1/8", 3/16", 3/8" and 1/2"

Standard sheet sizes range from 20" x 30" to 60" x 120"

High volume cut-to-size sheets quickly available upon request

Call: 1-800-873-4868



**Go for the basic
and profit from
its versatility.**

APPLICATIONS	Digital Imaging	Exhibits	Framing	Laminating	Litho mounting	Painting	Air Brushing	POP Displays	Screen printing	Signs	Vinyl lettering	Models
White Foam Board 3/16"	▲		▲	▲	▲	▲	▲	▲	▲	▲	▲	▲
White Foam Board 1/8"	▲		▲	▲	▲	▲	▲	▲	▲	▲	▲	▲
White Foam Board 1/2"	▲	▲	▲	▲	▲	▲	▲	▲	▲	▲	▲	▲
White Foam Board 3/8"	▲	▲	▲	▲	▲	▲	▲	▲	▲	▲	▲	▲

FABRICATIONS	Hand cutting	Die cutting	Embossing	Scoring	Machine cutting
White Foam Board 3/16"	▲	▲		▲	▲
White Foam Board 1/8"	▲	▲		▲	▲
White Foam Board 1/2"	▲			▲	▲
White Foam Board 3/8"	▲	▲		▲	▲



Extreme White Foam Board™

Extreme White Foam Board™ combines a resilient polystyrene core with ultra-vibrant bright white paper facers to create a premium imaging surface for digital printing, exhibits, painting, screen printing, signage and more. The higher perceived whiteness enhances the maximum color gamut and black density of printed images.

SPECIFICATIONS

Surface: Bright White, clay-coated

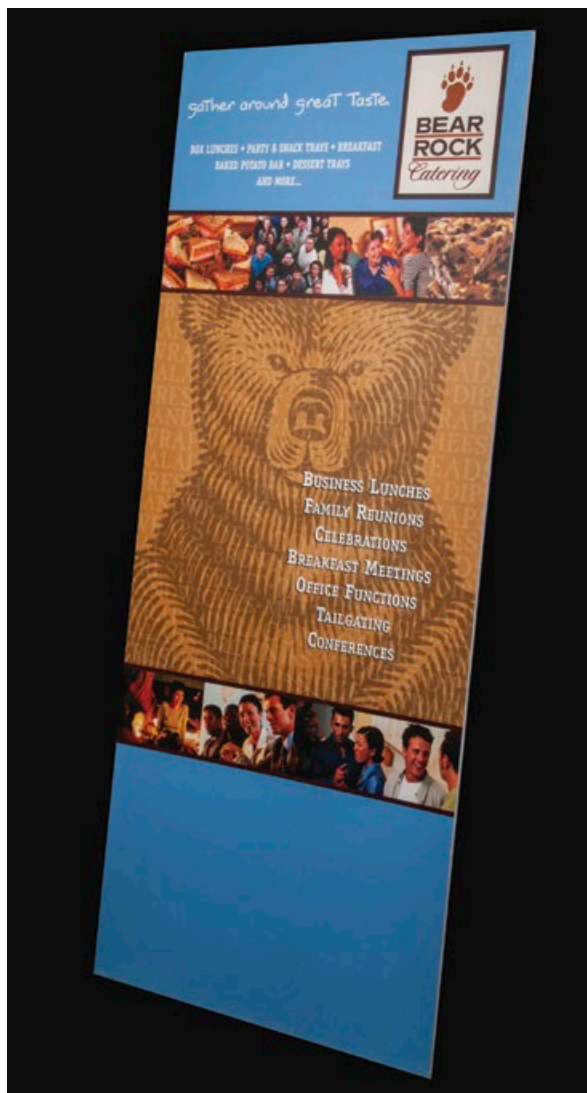
Core: White foam

Thickness: 1/8", 3/16" and 1/2"

Standard sheet size minimum: 48" x 96" to 60" x 120"

High volume cut-to-size sheets quickly available upon request

Call: 1-800-873-4868



APPLICATIONS	Digital Imaging	Exhibits	Framing	Laminating	Litho Mounting	Painting	Air Brushing	POP Displays	Screen Printing	Signs	Vinyl Lettering	Models
Extreme White 1/8"	▲	▲	▲	▲	▲	▲	▲	▲	▲	▲	▲	▲
Extreme White 3/16"	▲	▲	▲	▲	▲	▲	▲	▲	▲	▲	▲	▲
Extreme White 1/2"	▲	▲	▲	▲	▲	▲	▲	▲	▲	▲	▲	▲

FABRICATIONS	Hand cutting	Die cutting	Embossing	Scoring	Machine cutting
Extreme White 1/8"	▲	▲	▲	▲	▲
Extreme White 3/16"	▲	▲	▲	▲	▲
Extreme White 1/2"	▲	▲	▲	▲	▲



SingleStep® Heat-Activated Foam Board

Adhesive-Enhanced Boards that increase efficiency

It's pre-coated on one side with a heat activated adhesive that is specially formulated to work with a dry mounting press or a roller laminator. Simply remove the interleaving sheet, position image, cover with release paper and place into press. Permanent bond is achieved at 180°F. Available in White and Black-on-Black. Not recommended for resin-coated (RC) photographs.



SPECIFICATIONS

Surface: White or Black facing paper

Core: White or Black foam

Thickness: 1/8" and 3/16"

Standard sheet sizes range from 24" x 36" to 40" x 60"

High volume cut-to-size sheets quickly available upon request

Call: 1-800-873-4868



APPLICATIONS	Digital Imaging	Exhibits	Framing	Laminating	Litho mounting	Painting	Air Brushing	POP Displays	Screen printing	Signs	Vinyl lettering	Models
SingleStep 1/8"			▲	▲	▲							
SingleStep 3/16"			▲	▲	▲							

FABRICATIONS	Hand cutting	Die cutting	Embossing	Scoring	Machine cutting
SingleStep 1/8"	▲			▲	▲
SingleStep 3/16"	▲			▲	▲



Pressure Sensitive Adhesive Foam Board

EnCore® Adhesive-Enhanced Foam Boards

Permanent Pressure Sensitive Board

This foam board features a pressure sensitive coating on one side that eliminates messy glues and sprays. Simply peel back the protective liner, roll down the image and smooth. It's specially formulated to handle hard-to-hold items such as heavy posters, large maps, architectural drawings, photos, and heavy-coated non-porous items. Solid White and Black-on-Black®.



Premium Tac, a Repositionable Pressure Sensitive Board

Here's the best choice for greater flexibility. This board has a pH neutral adhesive that allows the image to be adjusted, removed, and reapplied to assure accurate placement. Its kraft liner is silicone treated and moisture resistant. Premium Tac is ideal for mounting posters, inexpensive prints, photographs, prints on gloss paper, laminated materials and other art and craft projects. It is not recommended for valuable artwork or limited edition prints. Solid white only.



SPECIFICATIONS

Surface: White or Black facing paper

Core: White or Black foam

Thickness: 3/16"

Varieties: Permanent & Repositionable Adhesive

Standard sheet sizes range from 20" x 30" to 40" x 60"

High volume cut-to-size sheets quickly available upon request

Call: 1-800-873-4868



APPLICATIONS	Digital Imaging	Exhibits	Framing	Laminating	Litho mounting	Painting	Air Brushing	POP Displays	Screen printing	Signs	Vinyl lettering	Models
Permanent			▲	▲								
Premium Tac Repositionable			▲	▲								

FABRICATIONS	Hand cutting	Die cutting	Embossing	Scoring	Machine cutting
Permanent	▲			▲	▲
Premium Tac Repositionable	▲			▲	▲

Masterpiece Collection Foam Board



www.bciimage.com
866 971-1008

EnCore® Masterpiece Collection

EnCore's Acid-free foam boards meet all tests for archival usage and are ready to tackle your most important and valuable projects.



Antique White Acid-Free is highly protective

In accordance with Library of Congress standards this board's facing paper is buffered with calcium carbonate to a pH between 7.7 and 8.5. This process protects both the board and the image placed upon it from deterioration over the years due to humidity and atmospheric pollutants.

Bright White Acid-Free is a brilliant choice

It's whiter than the whites you've used before. As a result it dramatically enhances colors of any artwork. Its pH between 7.7 and 8.5 calcium carbonate buffer prevents acid migration from the foam board that would cause irreparable damage to the paper items being mounted.

Black-on-Black® Acid-Free

Featuring the deepest, richest, black acid-free facing paper and foam available, EnCore Black-on-Black delivers a striking performance with dramatic results.

100% Cotton Rag has conservation properties

Unlike ordinary foam boards, it is constructed with pure, natural cotton fibers that contain no lignin, alum or harsh chemicals. Each facing paper has a pH balance of 8.2 + /- 0.5, and a calcium carbonate buffer. Its polystyrene foam core is chemically inert rendering it totally acid-free.

SPECIFICATIONS

Surface: Antique White, Bright White and White Cotton Rag facing paper

Core: White foam

Thickness: 1/8" and 3/16"

Standard sheet sizes range from 32" x 40" to 48" x 96"

High volume cut-to-size sheets quickly available upon request

Call: 1-800-873-4868

APPLICATIONS	Digital Imaging	Exhibits	Framing	Laminating	Litho mounting	Painting	Air Brushing	POP Displays	Screen printing	Signs	Vinyl lettering	Models
Acid-Free 3/16"			▲	▲								
Acid-Free 1/8"			▲	▲								
Bright White 3/16"			▲	▲								
Bright White 1/8"			▲	▲								
100% Cotton Rag 3/16"			▲	▲								
Black-on-Black 3/16"	▲		▲	▲	▲	▲	▲	▲	▲	▲	▲	▲
Black-on-Black 1/2"	▲	▲	▲	▲	▲	▲	▲	▲	▲	▲	▲	▲

FABRICATIONS	Hand cutting	Die cutting	Embossing	Scoring	Machine cutting
Acid-Free 3/16"	▲			▲	▲
Acid-Free 1/8"	▲			▲	▲
Bright White 3/16"	▲			▲	▲
Bright White 1/8"	▲			▲	▲
100% Cotton Rag 3/16"	▲			▲	▲
Black-on-Black 3/16"	▲	▲	▲	▲	▲
Black-on-Black 1/2"	▲		▲	▲	▲



Colored Foam Board

Set your imagination free!

From primary colors to patterns, these boards give you the creative edge on color for presentations that command attention and carry impact. Lighter than wood and more rigid than poster board, EnCore Colored Foam Boards feature a resilient polystyrene core that “bounces back” keeping the board uniform edge to edge. Accent and enhance EnCore Colored Foam Board with glitter, paint, markers, fabric or any other decorative medium to achieve professional results every time.

SPECIFICATIONS

Surface: Colored clay-coated on one side

Core: White foam

Thickness: 3/16"

Standard sheet sizes range from 20" x 30" to 48" x 96"

High volume cut-to-size sheets quickly available upon request

Call: 1-800-873-4868



APPLICATIONS	Digital Imaging	Exhibits	Framing	Laminating	Litho mounting	Painting	Air Brushing	POP Displays	Screen printing	Signs	Vinyl lettering	Models
Colored Foam Board 3/16	▲	▲	▲	▲	▲	▲	▲	▲	▲	▲	▲	▲

FABRICATIONS	Hand cutting	Die cutting	Embossing	Scoring	Machine cutting
Colored Foam Board 3/16	▲	▲	▲	▲	▲

EnCore® Foam Board Sustainability Commitment

At EnCore® Products, a division of Elmer's Products, Inc., we believe that responsible actions lead to long-term success. We assure that our products, when used as intended, are safe through their entire life cycle. Our continued cultural dedication makes our communities safer and promotes a cleaner environment for future generations to enjoy. From the workplace to the classroom, we integrate sustainable initiatives into our daily routines.

Reduce

- Our foaming agent is 100% ozone-friendly and our process is formaldehyde-free.
- Our Statesville, NC, plant has been recognized for its commitment to reducing energy consumption through low-energy, programmable lighting efforts, installation of programmable thermostats and adoption of intermodal transportation.
- Additionally, our Statesville plant has reduced its number of annual non-recyclable solid waste loads by 10% or more on average.

Reuse

- Foam board by products are reused as a fuel source to recover heat value, reducing the amount of electricity used.
- Our Statesville facility reuses wooden and plastic pallets and recycles damaged ones that are no longer able to be used.
- We continue to donate damaged electronics to local community colleges for repair and reuse versus simple disposal.

Recycle

- Our Foam Board products contain recycled content, both internally and externally generated.
- The Statesville facility implemented a massive recycling program to recycle as many materials associated with the production process as possible including scrap foam, corrugate, paper, blister cards, scrap shrink and stretch wrap, batteries and PET bands.
- The recycling program kept over 700,000 lbs. of materials from landfills.

ENCORE®
PRODUCTS

EnCore® has been a category leader for
MORE THAN 30 YEARS!

Guided by strong corporate values, we are dedicated to ensuring we meet our customers' needs and provide quality, environmentally conscious products. We believe our performance-driven products paired with sound environmental practices will yield long-term success and enjoyment by generations to come.





B.C.I.
IMAGING

www.bciimage.com
866 971-1008

VARIETY
VERSATILITY
VALUE

EnCore® Black-on-Black®, SingleStep®, PilloCore®, MightyCore® and Extreme White Foam Board™ are registered brands of Elmer's Products, Inc.

ENCORE®
PRODUCTS

A division of Elmer's Products, Inc.
2020 West Front Street
Statesville, NC 28677

1-800-873-4868

www.EncoreProducts.com

EnCore[®] Fine Art Boards

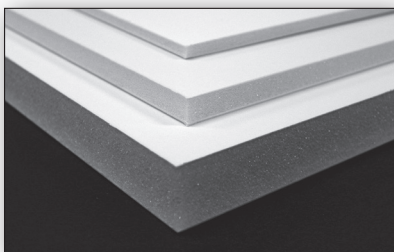
Add Instant Dimension to Your Products with the Fine Textures of Art Boards.

Enhance the Artistic Quality of Your Output.

The Value & Performance You Expect from EnCore[®]

Canvas Cork Chalkboard Extreme White

Artists have the highest standards for the media in which they use – the basis of their work. With artistic demands and creative needs in mind, we have developed a collection of foam boards featuring unique surfaces. Prints, digital artworks, logos, patterns and reproductions of art and photography are just a few examples of what may be directly printed to EnCore Fine Art Boards.



Canvas Foam Boards

- Streamline the production of fine art products that demand the look of canvas or linen. No wrapping or stretching of printed images. Encore's Canvas Foam Boards fill the gap where genuine canvas stretchers and skilled labor are too costly. With EnCore Canvas Foam Boards you can achieve the same look instantly.
- Textured surface enriches the artistic quality of printed portraits, photographs and painted images and conveys a pricey impression to the finished product.
- Eliminates stretching canvas. Just print and frame or fold into a gallery wrap.
- Cuts easily by hand or machine.

High volume cut-to-size sheets available upon request.

Canvas 1/4"

- Dense polystyrene foam core
- Real Artists Canvas on one side

Embossed Canvas 1/4"

- Dense polystyrene foam core
- Embossed Canvas on one side

Embossed Canvas 3/16"

- Polystyrene foam core
- Embossed Canvas on two sides

Cork Foam Board

- 3/8" thickness so push pins won't damage walls
- Cuts easily by hand or machine
- Cork on one side
- Lightweight
- Print or Paint to create Designer Cork Foam Boards
- Print Team logos for College Students or Sports Fans

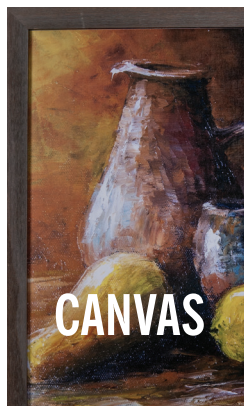
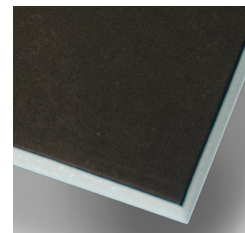
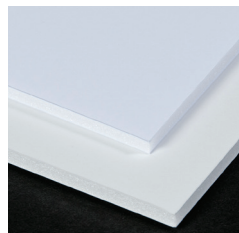
Chalkboard Foam Board

- Chalk surface on one side
- 3/16" thickness
- Printable surface. Add branding, borders or personal design
- Easy to clean
- Lightweight
- Easily cut by hand or machine

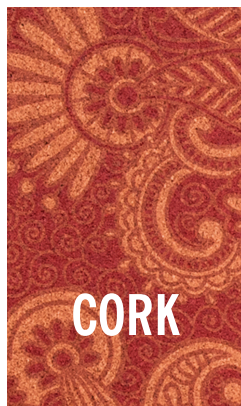
Extreme White for Photography

- Whiter than traditional clay-coated foam boards
- Bright White: higher perceived whiteness enhances maximum color gamut and black density of printed images
- Enhanced printing surface – good detail and smooth skin tones
- Clay-coated
- Smooth bright white paper liners
- Resilient polystyrene "memory" foam core
- Lightweight
- Easy to cut

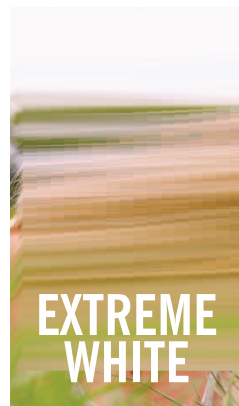
EnCore® Fine Art Boards Specifications						
Item Number	Thickness (inches)	Sheet Size (inches)	Sheets Per Case	Sq. Feet Per Sheet	Sq. Feet Per Case	Cases Per Pallet
Canvas Foam Boards						
960-715	1/4"	24 x 36	12	6.00	72.00	50
960-710	1/4"	48 x 96	12	32.00	384.00	12
960-711	1/4"	48 x 96	12	32.00	384.00	12
905-240	3/16"	48 x 96	25	32.00	800.00	15
Cork Foam Boards						
950-180	3/8"	20 x 30	10	4.17	41.70	30
905-232	3/8"	40 x 60	12	16.67	200.04	15
Chalkboard Foam Boards						
950-185	3/16"	20 x 30	10	4.17	41.70	40
950-186	3/16"	40 x 60	25	16.67	416.75	15
Extreme White for Photography						
905-253	3/16"	48 x 96	25	32.00	800.00	15



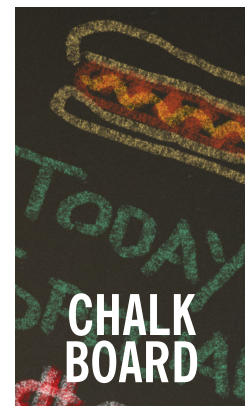
CANVAS



CORK



EXTREME WHITE



CHALK BOARD

ENCORE® Products
a division of Elmer's Products, Inc.
2020 West Front Street
Statesville, NC 28677

Customer Service: 800-873-4868
Fax: 704-871-8671
Hrs. 8:00 am – 5:00 pm (EST)

www.encoreproducts.com
www.elmers.com



WARNING: EnCore® Foam Board is flammable and may constitute a fire hazard if improperly handled. Do not expose to an open flame or other ignition source.



SPECIAL FEATURES

All plastic board

High-Impact Polystyrene
facers with a dense
polystyrene foam core

Bright white facers that
enhance images printed
to its surface

Facers are pH neutral

Excellent printability

Superior bonding and
edges resist chipping

Facers are corona treated

Available in $\frac{3}{16}$ " and $\frac{1}{2}$ "
thickness

MightyBull

Extra-Rugged / Extra-Protective

Durability, Versatility & Long Life

Smooth, litho-grade high-impact polystyrene liners readily accept digital printing, screen printing and vinyl lettering to create exhibits, POP displays, and signage.

Its dense, rigid, polystyrene foam core is sturdy yet lightweight. Achieve clean cuts easily by hand or machine.

MightyBull liners are washable and moisture resistant.

Customize Color & Sheet Size

MightyBull stock colors are White with White foam and Black with Black foam. Variations of these liners and foam are available. Custom color matched liners and foam are also available. Standard sheet size is 48" x 96" in $\frac{3}{16}$ " and $\frac{1}{2}$ " thickness. High volume, custom cut-to-size sheets are available upon request.





Specifications

Item No.	Case UPC	Thickness (inches)	Color	Sheet Size	Sheets per Case	Sq. Ft. per Sheet	Sq. Ft. per Case	Cases per Pallet
960-143	79946-05301	3/16"	White	48" x 96"	15	32.00	480.00	12
960-153	79946-05302	1/2"	White	48" x 96"	12	32.00	384.00	8
960-163	79946-05307	3/16"	Black-on-Black	48" x 96"	15	32.00	480.00	12

Specifications – Bulk

Item No.	Thickness (inches)	Color	Sheet Size	Sheets per Pallet
960-413	3/16"	White	48" x 96"	175
960-433	1/2"	White	48" x 96"	70
960-453	3/16"	Black-on-Black	48" x 96"	175

Applications

Digital Imaging	X
Exhibits	X
Framing	
Laminating	
Litho Mounting	X
Painting	X
Air Brushing	X
POP Displays	X
Screen Printing	X
Signs	X
Vinyl Lettering	X
Models	X

Fabrication Techniques

Hand Cutting	X
Die Cutting	
Embossing	
Scoring	X
Machine Cutting	X
Routing	X

EnCore[®] Products

A division of Elmer's Products, Inc.
2020 West Front Street
Statesville, NC 28677

Customer Service: 800-873-4868

Fax: 704-871-8671

Hrs. 8:00 am – 5:00 pm (EST)

www.encoreproducts.com

www.elmers.com

HANDLING SUGGESTIONS

EnCore[®] recommends using white, cotton gloves to handle MightyBull[™] and rubbing the surface lightly with rubbing alcohol or a tack cloth to remove any debris before printing.

HIGH-VOLUME CUT-TO-SIZE SHEETS: Available upon request Call: 1-800-873-4868

WARNING: EnCore[®] Foam Board is flammable and may constitute a fire hazard if improperly handled. Do not expose to an open flame or other ignition source.

Elmer's makes no warranty of any kind, expressed or implied, as to merchantability, fitness for a particular purpose, or any other manner with respect to MightyBull[™].

ENCORE™ PRODUCTS



MightyCore Heavy-Duty Foam Board Tech Guide

MightyCore is one of the strongest, most versatile rigid foam board products on the market today. Easy to work with and incredibly durable, MightyCore is the perfect choice for a variety of projects. Available in White and Black-On-Black in 3/16", 1/4" and 1/2" thicknesses along with White-Black-White and White-Black-Black in 1/4" and 1/2" thicknesses in a variety of sizes. It's free of toxic chemicals such as chloroflourocarbons (CFCs) and formaldehyde.

Smooth Outside. Solid Inside.

The ultra smooth surface provides excellent ink coverage and adherence for UV-curable inks. The rigid, rock-solid center makes it especially suitable for large fabricated pieces. The construction of MightyCore helps prevent warping, bowing and twisting and creates a "no preparation" surface for printing and applications that need a rigid substrate. The specially engineered paper composite readily accepts most glues, inks, and paints.

Stronger, Durable, Versatile

The MightyCore heavy-duty liners resist denting, bending, crushing, cracking and splintering. Its dense polystyrene core is an upgrade from regular foam board. It cuts easily and cleanly; use a knife by hand for straight simple cuts, and a machine for more intricate patterns. Its white surface allows dramatic printing results and it works exceptionally well with vinyl graphics. MightyCore is ideal for mounting graphics and digital images to create signs, point-of-purchase displays and exhibits.

MightyCore has been tested in a humidity chamber at various temperatures and humidity levels and has remained extremely stable throughout.

Because MightyCore is free of toxic chemicals such as CFC's and formaldehyde it is safer and easier to work with.

We encourage you to test MightyCore before you begin a project to determine the best tools, settings and techniques for your specific applications.



Peel-and-Stick Versatility
Superior Adhesive
Humidity-Resistant Liner

The Value & Performance
You Expect from EnCore®

EnCore® PremiumTac Adhesive Foam Boards

This peel-and-stick foam board has superior tacky-ness that lasts longer than traditional adhesives making it more versatile for repositioning and adjustment when mounting work. Work remains adhered to the surface until ready for removal. The kraft colored release liner is silicone treated and moisture resistant, which helps eliminate tunneling in varying climate conditions.

Premium Tac foam board is ideal for mounting posters, photographs, inexpensive prints (including gloss paper), laminated materials and general art and craft projects. Once positioned, application of firm pressure to the mounted artwork will secure the bond. Premium Tac is also well-suited for cold mounting applications, can be easily cut by hand or machine and scores well.

Features and Benefits

- Easy to use, just peel and stick
- Available in White
- 3/16" thickness
- Kraft liner is silicone treated to yield superior performance characteristics than competing peel-and-stick boards
- May be used in cold mounting applications
- Adhesive is pH neutral
- Ideal for mounting images, artwork, crafts, fabric and more due to the adhesive's ability to hold glossy, smooth, porous and semi-rough textures
- "Tacky-ness" lasts longer than other adhesives
- A truly repositionable board without sacrificing bond

Silicone-Treated Kraft Liner

- Superior to paper liners
- Moisture-resistant
- Resists tunneling in humid climates

Excellent All-Around Mounting Performance for Arts & Crafts

- Posters
- Inexpensive prints
- Photographs
- Gloss paper prints
- Laminated materials
- Fabric

** EnCore® does not recommend PremiumTac for high-value artwork, limited edition prints or items that might need to be removed at a later date.

EnCore® Premium Tac Foam Board Specifications

Item Number	Case UPC	Sheet Size (inches)	Sheets Per Case	Sq. Feet Per Sheet	Sq. Feet Per Case	Cases Per Pallet
905-190	50079946052423	20 x 30	25	4.17	104.25	20
905-195	50079946052447	24 x 36	25	6.00	150.00	30
905-191	50079946052430	32 x 40	25	8.89	222.25	15
905-192	50079946052454	40 x 60	25	16.67	416.75	15

Application Directions

- Simply peel off the kraft colored release liner and position your work for initial inspection.
- Temporary positioning may be adjusted, removed and reapplied to assure accurate placement of your work.
- Once you have positioned your work, apply firm pressure.

ENCORE® Products

a division of Elmer's Products, Inc.
2020 West Front Street
Statesville, NC 28677

Customer Service: 800-873-4868

Fax: 704-871-8671

Hrs. 8:00 am – 5:00 pm (EST)

www.encoreproducts.com
www.elmers.com



WARNING: EnCore® Foam Board is flammable and may constitute a fire hazard if improperly handled. Do not expose to an open flame or other ignition source.

ENCORE™
PRODUCTS



EnCore™ Heat-Activated Adhesive Foam Boards

These foam boards are pre-coated on one side with specially formulated, heat-activated adhesive. SingleStep® speeds up the mounting process by eliminating the time-consuming measuring, cutting, and tacking of dry mounting tissue. Lower heat and pressure activate the specially formulated adhesive for risk-free bonding.

Features and Benefits

- Ultra smooth, brilliant white surface features a clay coating and also available in Black-on-Black
- Saves work, saves time, saves steps for increased production safety and efficiency
- Easy to use; simply remove the release paper, position image, replace release paper and place into press
- “Memory” Core bounces back after handling or cutting
- Mounts without subjecting artwork to potentially damaging temperatures
- We do not recommend SingleStep for resin coated (RC) photographs

SingleStep® Original Adhesive

- Art bonds in minutes at a safe operating temperature of 180°F
- A variety of sizes in 1/8” or 3/16” thickness
- Designed for mounting canvas and fabric materials
- Can be used in dry mount press or roller laminator
- Adhesive is pH neutral
- Permanent bond

SingleStep® Smooth Adhesive

- Art bonds in minutes at a safe operating temperature of 180°F
- Adhesive is pH neutral
- Permanent bond
- Smooth adhesive pattern
- Designed for mounting posters, prints and thinner papers



EnCore™ SingleStep® Foam Board Specifications

Item No.	Case UPC	Sheet Size (in inches)	Sheets per case	Sq.Ft. per sheet	Sq. Ft. per case	Cases per pallet
White SingleStep 1/8" Thick – Original Adhesive						
900-921	79946-10607	32" x 40"	25	8.89	222.25	10
900-922	79946-10608	40" x 60"	25	16.67	416.75	10
White SingleStep 3/16" Thick – Original Adhesive						
900-905	79946-10604	24" x 36"	25	6.00	150.00	20
900-900	79946-13544	30" x 40"	25	8.33	208.25	10
900-901	79946-10602	32" x 40"	25	8.89	222.25	10
900-902	79946-10603	40" x 60"	25	16.67	416.75	10
901-415	79946-04894	48" x 96"	25	32.00	800.00	10
Black-On-Black® SingleStep 3/16" Thick" – Original Adhesive						
905-115	79946-48889	24" x 36"	25	6.00	150.00	20
905-111	79946-48865	32" x 40"	25	8.89	222.25	10
905-112	79946-48872	40" x 60"	25	16.67	416.75	10
905-113	79946-48858	48" x 96"	25	32.00	800.00	12
White SingleStep 3/16" Thick – Smooth Adhesive						
905-220	79946-05310	24" x 36"	25	6.00	150.00	20
905-221	79946-05311	32" x 40"	25	8.89	225.25	10
905-222	79946-05312	40" x 60"	25	16.67	416.75	10

EnCore™ Products

A division of Elmer's Products, Inc.
2020 West Front Street
Statesville, NC 28677

Customer Service: 800-873-4868

Fax: 704-871-8671

Hrs. 8:00 am – 5:00 pm (EST)

www.encoreproducts.com

www.elmers.com



MOUNTING REFERENCE GUIDE

Foam Board	Image	Temperature	Vacuum Press	Mechanical Press
SingleStep®	Poster	180°F	3 minutes	2 minutes
SingleStep®	Newsprint	180°F	3 minutes	2 minutes
SingleStep®	Magazine pages	180°F	3 minutes	2 minutes
SingleStep®	Fabric	180°F	3 minutes	2 minutes
*This foam board is not recommended for resin-coated (RC) photographs.				
*Recommended temperature and dwell time should be used as a guideline. The best combination could vary depending on size and humidity. As a rule, increase dwell time before increasing temperature.				

©2012 Elmer's Products, Inc.

5010-12

(3/12)

