

2015



DISPLAY HARDWARE | PRINTABLE MEDIA | FINISHING SUPPLIES

DISPLAYS & GRAPHIC SUPPLIES

## 1 Lifetime Warranty

*We offer a lifetime, hassle-free warranty on our products.*



## 2 Exceptional Customer Service

*Experience for yourself the efficient, friendly service we give every customer on every order.*



## 3 High-Speed Turn Times

*With same-day shipping from our six warehouse locations, we will help you meet your deadline.*



## 4 Low Shipping Rates

*Our shipping charges are never marked up for profit. Enjoy discounted shipping rates we have established with leading carriers.*



## 5 We Help You Sell

*We provide unbranded sales literature and discounted pricing on showroom hardware to help you sell to your customer.*



# CONTENTS

- 2-11 SINGLE-SIDED RETRACTABLE BANNER STANDS
- 12-13 DOUBLE-SIDED RETRACTABLE BANNER STANDS
- 14-15 OUTDOOR DISPLAYS
- 16-17 OUTDOOR FABRIC FLAGS
- 18-21 TENSION DISPLAYS
- 22-23 TABLETOP DISPLAYS
- 24-26 POP-UP DISPLAYS AND COUNTERS
- 27-29 DISPLAY ACCESSORIES
- 30-31 REPLACEMENT PARTS
- 32-37 ECO SOLVENT / UV / LATEX INKJET PRINTABLE MEDIA
- 38-43 WATER-BASED INKJET PRINTABLE MEDIA
- 44-45 LAMINATING FILMS
- 46-48 MOUNTING ADHESIVES
- 49 INSTRUCTIONS FOR ORDERING CUSTOM-PRINTED ITEMS

EPSON



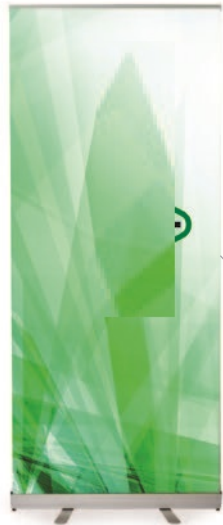
Canon

*We also sell ink! Call for pricing: 866 971-1008*

# RETRACTABLE

# SINGLE-SIDED BANNER STANDS

## CLASSIC



- Finish: **Silver**
- Padded carrying case included
- Graphic is held with top clamp rail and bottom adhesive leader



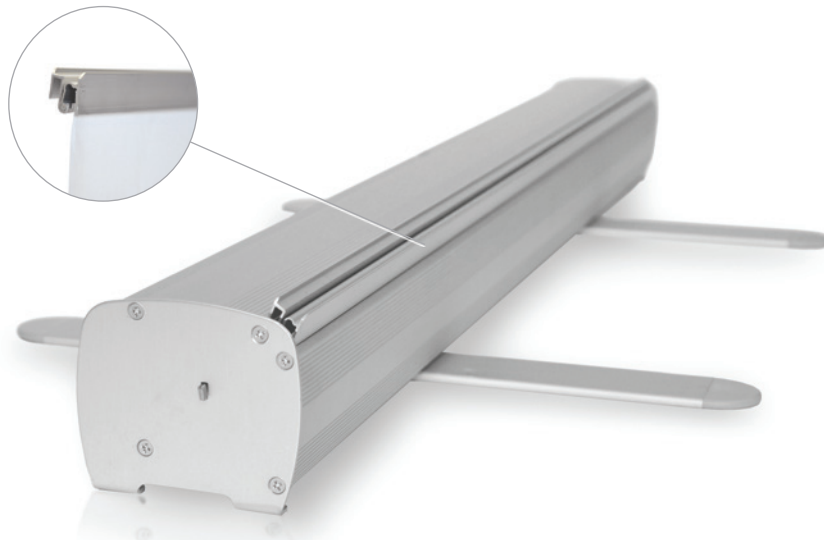
lifetime warranty

indoor



Code	Finish	Viewable Graphic Area
DRCS34	Silver	33.5" W x 78.75" H

We recommend adding 6" of length to the bottom of the viewable graphic height (listed above) in order to reinforce the attachment to the spring cassette. See graphic installation tips at [www.bciimage.com](http://www.bciimage.com)



## CLASSIC DESIGN, SUPERIOR PERFORMANCE

Compare the Classic to the typical economy stand:

- Lifetime warranty
- The same robust spring system featured on our higher-end models
- Advanced ABS plastic internal parts
- Up to 50% thicker aluminum body
- Each stand individually tested at the factory



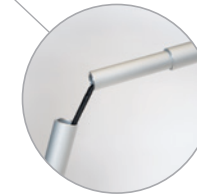
# RETRACTABLE

# SINGLE-SIDED BANNER STANDS

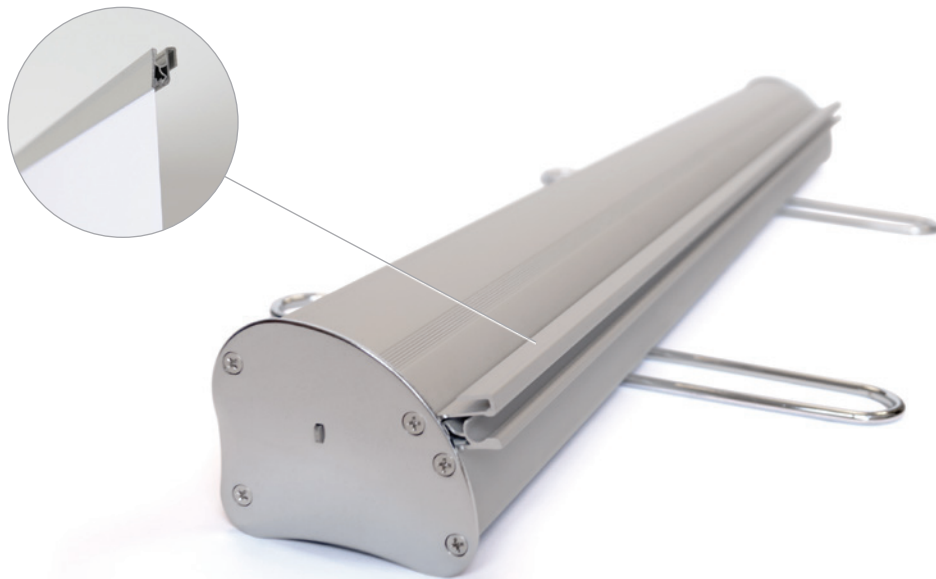


## RELIANT

- Heavy gauge aluminum construction
- Polished chrome end caps and feet
- Finish: **Silver** or **Black**
- Padded carrying case included
- Graphic is held with top clamp rail and bottom adhesive leader



magnetic top clamp connector



Code	Finish	Viewable Graphic Area
DRRS24	Silver	23.5" W x 78" H
DRRB24	Black	23.5" W x 78" H
DRRS34	Silver	33.5" W x 78" H
DRRB34	Black	33.5" W x 78" H
DRRS39	Silver	39.3" W x 78" H
DRRS48	Silver	47.25" W x 78" H
DRRB48	Black	47.25" W x 78" H
DRRS60	Silver	59" W x 78" H
DRRB60	Black	59" W x 78" H
DLSSMCS	Magnetic Top Clamp Connector	

NEW

NEW

We recommend adding 6" of length to the bottom of the viewable graphic height (listed above) in order to reinforce the attachment to the spring cassette.



For printable media for this product, see pages 34 and 40.



See banner stand accessories on pages 28-29.



# RETRACTABLE

# SINGLE-SIDED BANNER STANDS

## HORIZON



- Stylish, contoured base
- Adjustable height
- Finish: **Silver** or **Black**
- Padded/rigid carrying case included
- Graphic is held with top clamp rail and bottom adhesive leader



## EXECUTIVE



- Interchangeable graphic cassette
- Adjustable height
- Front slot for additional graphics
- Finish: **Silver** or **Black**
- Padded carrying case included
- Graphic is held with top clamp rail and bottom clamp cassette



area for optional graphic

Code	Finish	Viewable Graphic Area
DRHS24	Silver	23.5" W x 62.25" - 89.5"H
DRHB24	Black	23.5" W x 62.25" - 89.5"H
DRHS34	Silver	33.5" W x 62.25" - 89.5"H
DRHB34	Black	33.5" W x 62.25" - 89.5"H
DRHS48	Silver	47.25" W x 62.25" - 89.5"H
DRHB48	Black	47.25" W x 62.25" - 89.5"H

We recommend adding 6" of length to the bottom of the viewable graphic height (listed above) in order to reinforce the attachment to the spring cassette.

Code	Finish	Viewable Graphic Area
DRES15*	Silver	15" W x 12.5" - 36.5"H
DREB15*	Black	15" W x 12.5" - 36.5"H
DRES24	Silver	22" W x 60.5" - 87.75"H
DREB24	Black	22" W x 60.5" - 87.75"H
DRES34	Silver	32.5" W x 60.5" - 87.75"H
DREB34	Black	32.5" W x 60.5" - 87.75"H
DRES48	Silver	46.5" W x 60.5" - 87.75"H
DREB48	Black	46.5" W x 60.5" - 87.75"H

We recommend adding 6" of length to the bottom of the viewable graphic height (listed above) in order to reinforce the attachment to the spring cassette.

\*15" model is a tabletop size and does not feature an interchangeable graphic cassette.



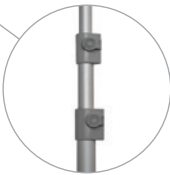
For printable media for these products, see pages 34 and 40.

# RETRACTABLE

# SINGLE-SIDED BANNER STANDS

## MAJESTIC

- Interchangeable graphic cassette
- Adjustable height (allows for use as tabletop display)
- Finish: **Silver**
- Padded carrying case included
- Graphic is held with top clamp rail and bottom clamp cassette

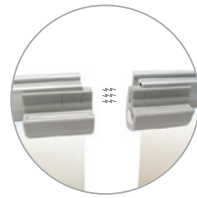


lifetime warranty

indoor

adjustable height

connectable



magnetic top clamp connector

Code	Finish	Viewable Graphic Area
DRMS34	Silver	33.5" W x 33" - 84" H
DRMS39	Silver	39.3" W x 33" - 84" H

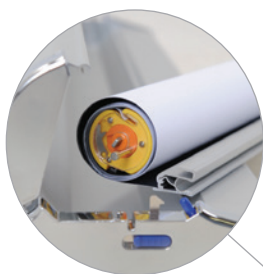
NEW

NEW

NEW

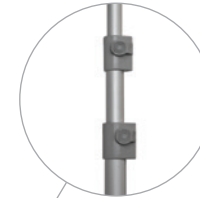
AVAILABLE SOON

We recommend adding 6" of length to the bottom of the viewable graphic height (listed above) in order to reinforce the attachment to the spring cassette. See graphic installation tips at [www.bciimage.com](http://www.bciimage.com)



## AMBASSADOR

- Interchangeable graphic cassette
- Manual tension feature
- Adjustable height (allows for use as tabletop display)
- Finish: **Silver**
- Padded carrying case included
- Graphic is held with top clamp rail and bottom clamp cassette



lifetime warranty

indoor

adjustable height



Code	Finish	Viewable Graphic Area
DRAS24	Silver	23.5" W x 85.5" H
DRAS34	Silver	33.5" W x 33.5" - 84.5" H
DRAS48	Silver	47.25" W x 33.5" - 84.5" H
DRAS60	Silver	59" W x 33.5" - 84.5" H
DRAD24	Interchangeable Graphic Cassette for DRAS24	
DRAD34	Interchangeable Graphic Cassette for DRAS34	
DRAD48	Interchangeable Graphic Cassette for DRAS48	
DRAD60	Interchangeable Graphic Cassette for DRAS60	

We recommend adding 6" of length to the bottom of the viewable graphic height (listed above) in order to reinforce the attachment to the spring cassette.



For printable media for these products, see pages 34 and 40.



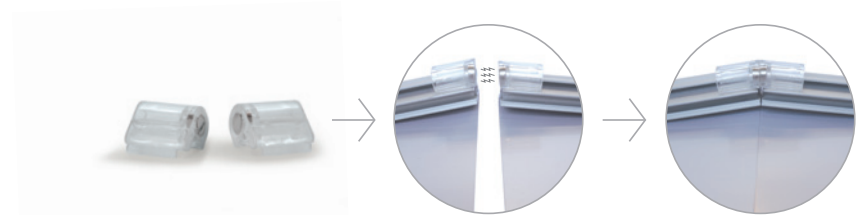
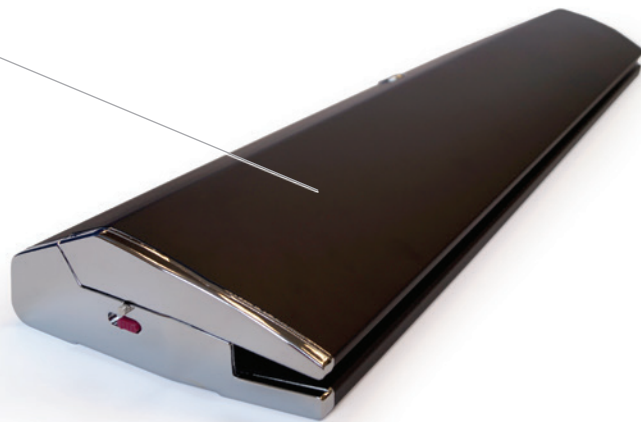
# RETRACTABLE

# SINGLE-SIDED BANNER STANDS

NEW FOR 2015

## LEGACY

- Interchangeable graphic cassette
- Angled base design allows graphic edges to touch when multiple units are sitting next to each other, creating a seamless semi-curved graphic wall
- Graphic is held with a “no-show” top clamp rail and bottom clamp cassette
- Finish: **Black**
- Padded carrying case included



magnetic top clamp connector (optional), for aligning the top clamps of multiple stands together

Code	Finish	Viewable Graphic Area
DRLB34	Black	33.5" W x 86.5" H
DRLB39	Black	39.3" W x 86.5" H
DRMD34	Interchangeable Graphic Cassette for DRLB34	
DRMD39	Interchangeable Graphic Cassette for DRLB39	
DRLBCM	Magnetic Top Clamp Connector	

We recommend adding 6" of length to the bottom of the viewable graphic height (listed above) in order to reinforce the attachment to the spring cassette. See graphic installation tips at [www.bciimage.com](http://www.bciimage.com)



For printable media for this product, see pages 34 and 40.

# RETRACTABLE

# DOUBLE-SIDED BANNER STANDS

## DOUBLE



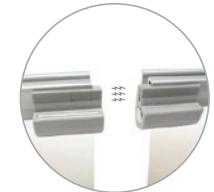
- Heavy gauge aluminum construction
- Finish: **Silver**
- Padded carrying case included
- Graphics are held with top clamp rails and bottom adhesive leaders



## NOBLE



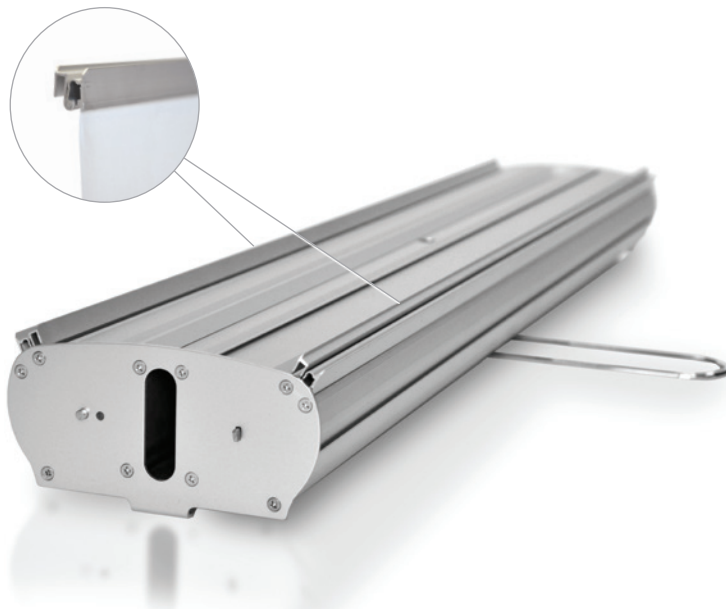
- Interchangeable graphic cassettes
- Finish: **Silver**
- Padded carrying case included
- Graphics are held with top clamp rails and bottom clamp cassettes



magnetic top clamp connector

Code	Finish	Viewable Graphic Area
DRDS34	Silver	33.5" W × 78.5" H

We recommend adding 6" of length to the bottom of the viewable graphic height (listed above) in order to reinforce the attachment to the spring cassette. See graphic installation tips at [www.bciimage.com](http://www.bciimage.com)

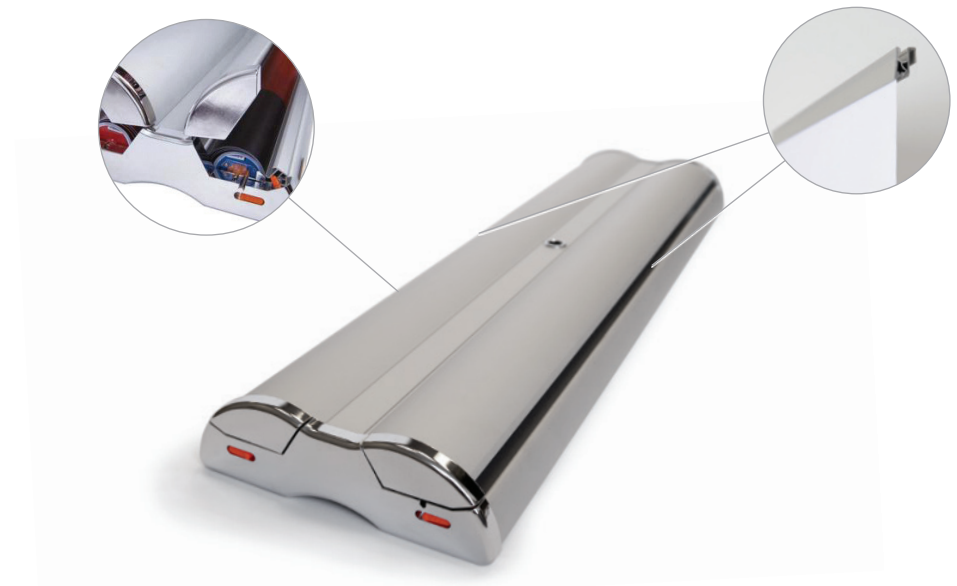


Code	Finish	Viewable Graphic Area
DRNS34	Silver	33.5" W × 84.5" H
DRMD34	Interchangeable Graphic Cassette	
DLSSMCS	Magnetic Top Clamp Connector	

AVAILABLE SOON

NEW

We recommend adding 6" of length to the bottom of the viewable graphic height (listed above) in order to reinforce the attachment to the spring cassette. See graphic installation tips at [www.bciimage.com](http://www.bciimage.com)





# OUTDOOR

# DISPLAYS

## SUMMIT

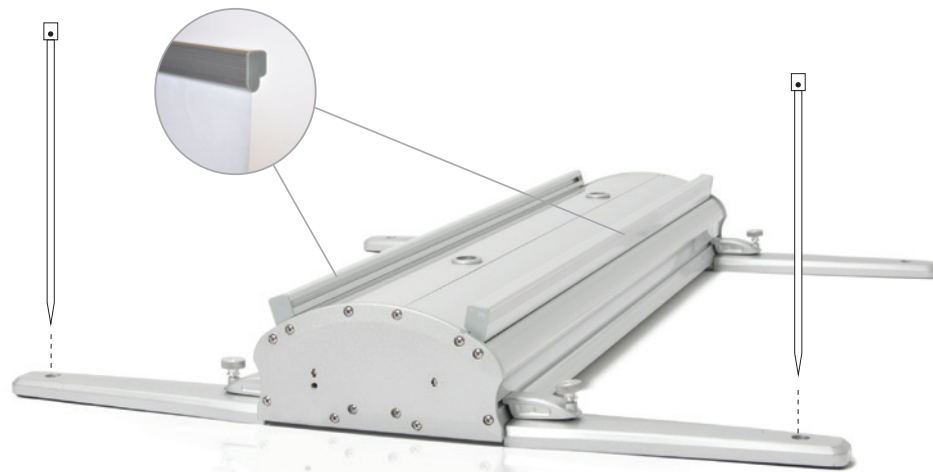
- Heavy-duty flex spring at base of poles helps the display to withstand strong winds
- Finish: **Silver**
- Rigid wheeled carrying case included
- Graphic is held with top screw-down/clamp rail and bottom adhesive leader
- Includes 4 steel ground stakes



## POSTER HOLDER

Code	Finish	Viewable Graphic Area	31.5" W × 77.5" H
DRSS34	Silver		

We recommend adding 6" of length to the bottom of the viewable graphic height (listed above) in order to reinforce the attachment to the spring cassette. See graphic installation tips at [www.bciimage.com](http://www.bciimage.com)



- Fillable wheeled based
- Heavy-duty flex springs help the display to withstand strong winds
- Finish: **Silver**
- Double-sided aluminum Snap-Frame



Code	Finish	Viewable Graphic Area	23" W × 32" H
DOP2332	Silver		

# OUTDOOR

# DISPLAYS

NEW FOR 2015

## FABRIC FLAGS

- Premium fiberglass-graphite composite pole
- Direct-to-fabric dye-sublimation printing
- High quality flag material with reinforced pole sleeve
- Carrying case included



single-sided double-sided

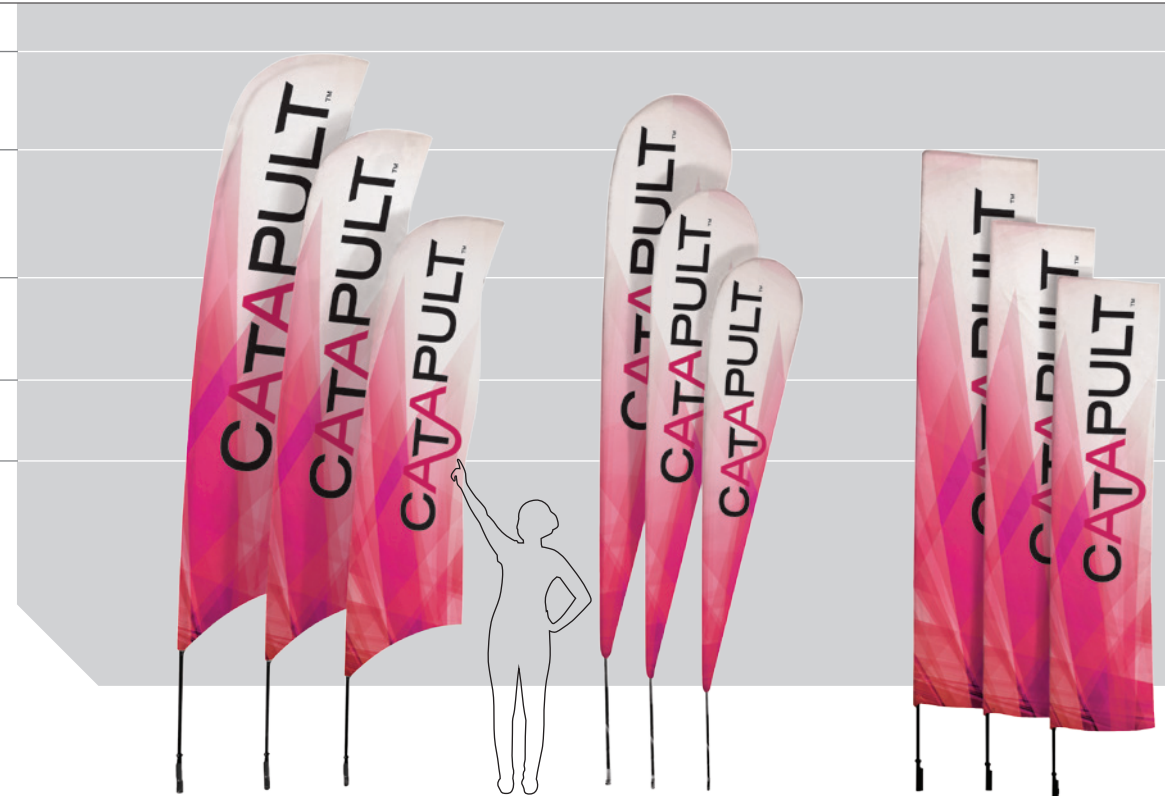


Choose single- or double-sided printing. Single-sided printing is visible on both sides (mirror image on the back). Double-sided printing ensures that the graphics on both sides read properly.

### STEP 1: Choose Printed Flag

Code	Item	Viewable Graphic Area	1-2 Units	3-5 Units	6+ Units
<b>BLADE</b>					
DFLT1030	Small Single-Sided Blade	27" W × 82" H			
DFLT1035	Small Double-Sided Blade	27" W × 82" H			
DFLT1080	Medium Single-Sided Blade	28" W × 114" H			
DFLT1085	Medium Double-Sided Blade	28" W × 114" H			
DFLT1130	Large Single-Sided Blade	33" W × 156" H			
DFLT1135	Large Double-Sided Blade	33" W × 156" H			
<b>TEARDROP</b>					
DFLT1020	Small Single-Sided Teardrop	30" W × 78" H			
DFLT1025	Small Double-Sided Teardrop	30" W × 78" H			
DFLT1070	Medium Single-Sided Teardrop	33" W × 112" H			
DFLT1075	Medium Double-Sided Teardrop	33" W × 112" H			
DFLT1120	Large Single-Sided Teardrop	37" W × 139" H			
DFLT1125	Large Double-Sided Teardrop	37" W × 139" H			
<b>TOWER</b>					
DFLT1050	Small Single-Sided Tower	30" W × 65" H			
DFLT1055	Small Double-Sided Tower	30" W × 65" H			
DFLT1100	Medium Single-Sided Tower	30" W × 100" H			
DFLT1105	Medium Double-Sided Tower	30" W × 100" H			
DFLT1150	Large Single-Sided Tower	30" W × 140" H			
DFLT1155	Large Double-Sided Tower	30" W × 140" H			

14'5"  
12'5"  
10'  
8'  
6'5"



**BLADE**

**TEARDROP**

**TOWER**

### STEP 2: Select Corresponding Pole

Code	Item
DFLT1160	Pole for Small Blade/Teardrop Flag
DFLT1165	Pole for Medium Blade/Teardrop Flag
DFLT1170	Pole for Large Blade/Teardrop Flag
DFLT1190	Pole for Small Tower Flag
DFLT1195	Pole for Medium Tower Flag
DFLT1200	Pole for Large Tower Flag

### STEP 3: Choose Base for Desired Application



Coated-steel rotating spike with stainless steel bearings for in-ground application



Heavy-duty X-base for indoor or flat surface environments



Water bag to provide additional weight (for use with X-base)

Code	Item
DFLT1230	Rotating Ground Spike
DFLT1235	X-Base
DFLT1245	Water Bag (for X-Base)

For instructions on preparing and submitting artwork for printing, see page 49.



# TENSION

# DISPLAYS



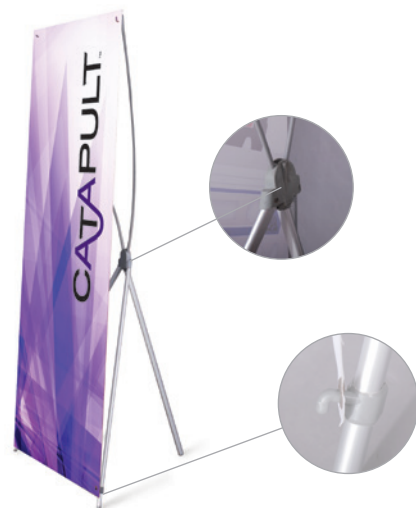
## PREMIUM L-TENSION



- Adjustable height
- Finish: **Silver**
- Carrying case included, with graphic protection tube
- Graphic is held with top and bottom clamp rail system



## PREMIUM X-TENSION



- Refined aluminum body with fiberglass upright rods
- Quick and easy setup
- Carrying case included, with graphic protection tube
- Finish: **Silver**



Code	Finish	Viewable Graphic Area
DLS15	Silver	15" W x 20.5" - 33.5" H
DLS24	Silver	23.5" W x 57" - 80" H
DLS34	Silver	33.5" W x 59.5" - 85" H
DLS48	Silver	47.25" W x 59.5" - 85" H

## X-TENSION

as low as \$8.00



- Light weight
- Quick and easy setup
- Nylon bag included
- Finish: **Black**



Code	Finish	Viewable Graphic Area	1-5 Units	6-11 Units	12+ Units	Code	Finish	Viewable Graphic Area
DXS15	Silver	15" W x 32.25" H				DXB32	Black	31.5" W x 70.75" H
DXS30	Silver	29.5" W x 69" H						

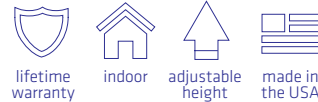
# TENSION

# DISPLAYS

## EXPANDABLE WALL DISPLAY



- Finish: **Silver** or **Black**
- Adjustable height and width
- Robust 1½" diameter telescoping poles



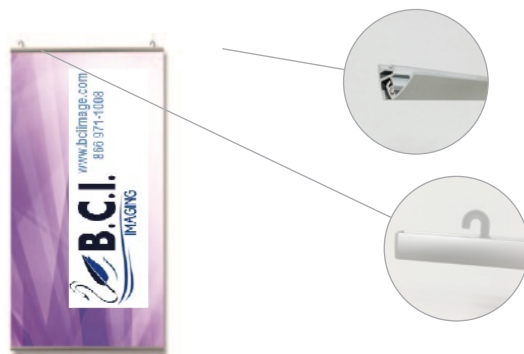
optional carrying case

Code	Finish	Viewable Graphic Area
DEWS96	Silver	52" - 96" W × 36" - 96" H
DEWB96	Black	52" - 96" W × 36" - 96" H
DEWSC10	Silver	10' Conversion Kit
DEWBC10	Black	10' Conversion Kit
DEWS96C	Silver	Extra Crossbar Kit
DEWB96C	Black	Extra Crossbar Kit
DEWC	Black	Carrying Case
DEW96FP	Printed Fabric Graphic (96" W × 96" H)	

NEW

For instructions on preparing and submitting artwork for printing, see page 49.

## HANGING BANNER



- Matching front and back profile
- Each set (2 rails) includes hanging hooks
- Graphic is held with top and bottom clamp rails
- Finish: **Silver**



Code	Finish	Viewable Graphic Area
DHCS24	Silver	23.5" W × Variable Height
DHCS34	Silver	33.5" W × Variable Height
DHCS48	Silver	47.25" W × Variable Height

NEW FOR 2015

## FABRIC TABLETOP COVER

- Flame-retardant and wrinkle-resistant polyester fabric
- Machine washable
- Full-color digital printing included



Drape Cover (Front View)



3-Sided Drape Cover (Back View)



Stretch Cover (Front View)



3-Sided Stretch Cover (Back View)

Code	Description
<b>DRAPE COVER</b>	
DTCV1015	6' Table 3-Sided Drape Cover
DTCV1030	6' Table 4-Sided Drape Cover
DTCV1020	8' Table 3-Sided Drape Cover
DTCV1035	8' Table 4-Sided Drape Cover
<b>STRETCH COVER</b>	
DTCV1165	6' Table 3-Sided Stretch Cover
DTCV1170	6' Table 4-Sided Stretch Cover
DTCV1175	8' Table 3-Sided Stretch Cover
DTCV1180	8' Table 4-Sided Stretch Cover

For instructions on preparing and submitting artwork for printing, see page 49.



# TABLETOP

# DISPLAYS



**PREMIUM  
L-TENSION**



**PREMIUM  
X-TENSION**



**EXECUTIVE  
RETRACTABLE**



**PRODUCTION  
RETRACTABLE**



**MINI  
X-TENSION**

	EXECUTIVE RETRACTABLE	PRODUCTION RETRACTABLE	PREMIUM L-TENSION	PREMIUM X-TENSION	MINI X-TENSION
Finish	Silver Black	Silver	Silver	Silver	Silver
Carrying case included	Padded carrying case	No	Carrying case with tube for graphic	Carrying case with tube for graphic	No
Adjustable heights	Yes	No	Yes	Yes	No
Graphic attached via	Top clamp rail and bottom adhesive leader	Top clamp rail and bottom adhesive leader	Top and bottom clamp rail	Grommets	Standard hole punch
Warranty	 lifetime warranty	 60-day warranty	 lifetime warranty	 60-day warranty	 lifetime warranty



Convert our full-size banner stands into tabletop models with our adjustable-height tabletop pole.  
Compatible models: Reliant, Majestic, Ambassador, and Legacy

Code	Finish	Viewable Graphic Area	1-3 Units	4-7 Units	8+ Units
<b>EXECUTIVE RETRACTABLE</b>					
DRES15	Silver	15" W x 12.5" - 36.5" H			
DREB15	Black	15" W x 12.5" - 36.5" H			
Code	Finish	Viewable Graphic Area	1-5 Units	6-11 Units	12+ Units
<b>PRODUCTION RETRACTABLE</b>					
DRPS12	Silver	11.75" W x 16.5" H			
<b>PREMIUM L-TENSION</b>					
DLS15	Silver	15" W x 20.5" H - 33.5" H	\$ 18.00		
<b>PREMIUM X-TENSION</b>					
DXS15	Silver	15" W x 32.25" H			
<b>MINI X-TENSION</b>					
DXC8511	Clear	8.5" W x 11" H			
DXC1117	Clear	11" W x 17" H			
<b>OPTIONAL POLE TO CONVERT FULL-SIZE BANNER STANDS INTO TABLETOP MODELS</b>					
DRASPAT	Silver	Tabletop Adjustable Height Pole, 24.5" - 56"			

**NEW**

# POP-UP

# DISPLAYS

## MAGNETIC POP-UP DISPLAYS



DPWMS43

straight display top view



curved display top view



DPWMS39



DPWMC22



- Light weight, easy to transport
- Strong aluminum frame design
- Easy setup with “floating” magnetic panel hangers
- Smooth graphic joints with recessed magnetic bars
- Adjustable feet
- Features rounded end cap graphics
- Includes 2 UL-listed 150W halogen lights (wall displays only)
- Hard, wheeled case converts to counter with included wooden top (wall displays only)
- Carrying case included (tabletop displays only)

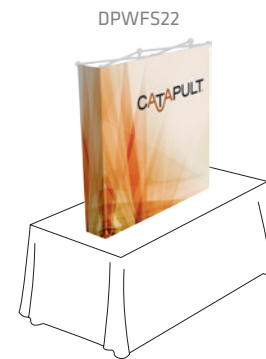
## FABRIC POP-UP DISPLAYS



DPWFS43



- Seamless graphic wall
- Light weight, easy to transport
- Strong aluminum square-frame design
- Pre-attached Velcro®
- Easy setup
- Adjustable feet
- UL-listed 150W halogen lights (optional)
- Carrying case included



DPWFS22



DPWFS39

Code	Design	Viewable Graphic Area	Code	Design	Dimensions (Approximate)	1-2 Units	3-5 Units	6+ Units
<b>WALL DISPLAYS</b>			<b>BACK WALL DISPLAYS</b>					
DPWMS43	Straight	132.68" W x 88.58" H	DPWFS43	Straight	120" W x 90" H			
DPWMC43	Curved	118.11" W x 88.58" H	DPWFS43FP	Printed Graphic	120" W x 90" H			
DPWMS43H	Replacement Graphic Hanger Kit, Straight		DPWFS43WS	Printed Graphic with Side Panels	144" W x 90" H			
DPWMC43H	Replacement Graphic Hanger Kit, Curved		DPULB	Black	Halogen Light Kit, 150W (1 light)			
DPWMT	Magnetic tape roll, 98.4'		<b>TABLETOP DISPLAYS</b>					
DPULB	Black	Halogen Light Kit, 150W (1 light)	DPWFS22	Straight	60" W x 60" H			<b>NEW</b>
<b>TABLETOP DISPLAYS</b>			DPWFS22FP	Printed Graphic	60" W x 60" H			<b>NEW</b>
<b>NEW</b> DPWMS39	Straight	55" W x 39" H	DPWFS22WS	Printed Graphic with Side Panels	88" W x 60" H			<b>NEW</b>
<b>NEW</b> DPWMC22	Curved	47.68" W x 35.5" H	DPWFS39	Straight	39" W x 39" H			<b>NEW</b>
<b>NEW</b> DPWMS39H	Replacement Graphic Hanger Kit, Straight		DPWFS39FP	Printed Graphic	39" W x 39" H			<b>NEW</b>
<b>NEW</b> DPWMC22H	Replacement Graphic Hanger Kit, Curved		DPWFS39WS	Printed Graphic (with side panels)	63" W x 39" H			<b>NEW</b>

For instructions on preparing and submitting artwork for printing, see page 49.



# POP-UP COUNTERS

## MAGNETIC POP-UP COUNTER

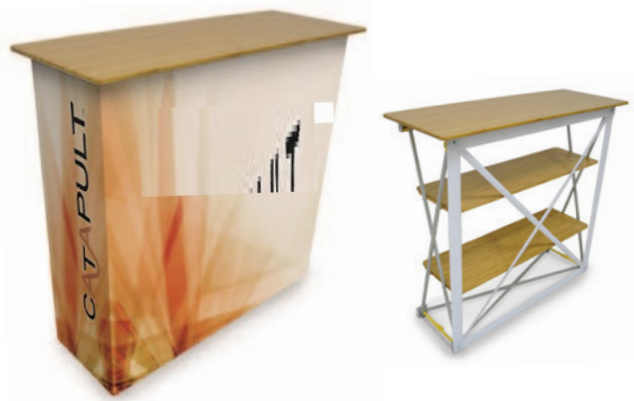


- Light weight, easy to transport
- Strong aluminum square-frame design
- Easy setup with "floating" magnetic panel hangers
- Beechwood-colored bamboo counter and shelves
- Carrying case included



Code	Design	Viewable Graphic Area
DPCMC22	Curved	47.68" W x 35.5" H
DPCMC22H	Replacement Graphic Hanger Kit	

## FABRIC POP-UP COUNTER



- Light weight, easy to transport
- Strong aluminum square-frame design
- Pre-attached Velcro®
- Beechwood-colored bamboo counter and shelves
- Adjustable feet
- Carrying case included



Code	Design	Viewable Graphic Area
DPCFS39	Straight	39" W x 39" H
DPCFS39WS	Printed Graphic (with side panels)	63" W x 39" H"

NEW FOR 2015

## iPAD STAND



- Versatile solution for impressive interactive product presentations at any exhibit, event or showroom
- Designed to hold iPad 2, 3, 4 and Air models
- Powder-coated steel and aluminum construction.
- Discreet weighted base with rubber feet pads for stability
- Acrylic translucent-white shelf
- Lockable steel cradle for security
- Cradle features recess room for external battery pack option
- Cradle offers 360° rotation, plus tilt and swivel feature.
- Optional graphic mounting clamp system included
- Padded all-in-one carrying bag included



Code	Description	Finish
DISB	iPad Stand	Black

For instructions on preparing and submitting artwork for printing, see page 49.

# DISPLAY

# ACCESSORIES

## DISPLAY LIGHT KITS



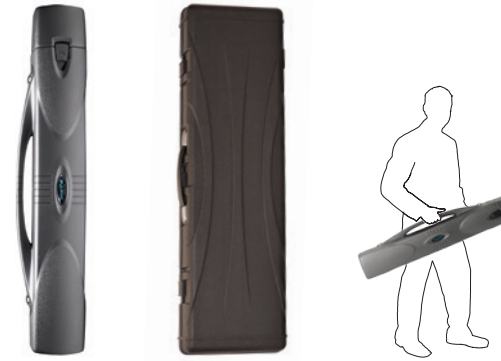
- UL listed
- Universal clamp design, easily attaches to display
- Available in: **Silver** or **Black**
- Padded carrying case included



Code	Finish	Description
DRULS	Silver	Universal Light Kit for Retractable Displays (Includes 50W Halogen Bulb)
DRULSHB50	50W Halogen Bulb for DRULS	
DRULSLB5	5W (35W Equivalent) LED Bulb for DRULS	
DRULSLB7	7W (50W Equivalent) LED Bulb for DRULS	
DPULB	Black	Universal Light Kit for Pop-Up Displays

NEW  
NEW

## BANNER STAND TRAVEL CASES (SINGLE)



- Durable blow-molded plastic design
- Sturdy double-latch lid
- Accommodates a single banner stand



Code	Finish	Inside Dimensions	
DRHCSS	Slate	5.5" x 5" x 39" depth	
DRHCML34	Black	For Majestic or Legacy 34"0	AVAILABLE SOON
DRHCML39	Slate	For Majestic or Legacy 39"	AVAILABLE SOON

NEW  
NEW

## MESH LITERATURE RACK



- Strong mesh structure
- Lightweight and compact design
- Quick and easy to setup
- 4 or 8 pocket design
- Carrying case included



Code	Finish	Width
DLSSLS	Silver with Black Mesh	Single (4 pocket)
DLSSLD	Silver with Black Mesh	Double (8 pocket)

## BANNER STAND TRAVEL CASE (MULTIPLE)



- Durable blow-molded plastic design
- Sturdy hinged/latch lid
- Features heavy-duty roller wheels
- Accommodates up to four 34" banner stands



Code	Finish	Inside Dimensions
DRHCMB1232	Blue	11.78" W x 31.75" depth
DRHCMB1238	Blue	11.78" W x 37.75" depth
DRHCMB1250	Blue	11.78" W x 49.75" depth
DRHCMB1636	Blue	15.25" W x 35.75" depth
DRHCMB1642	Blue	15.25" W x 41.75" depth
DRHCMB1650	Blue	15.25" W x 49.75" depth



# PARTS

## CLASSIC

Code	Item	Viewable Width
DRCST34	Top Clamp (Silver)	34"
DRCSF	3-Part Pole (Silver)	
DRCS34	Padded Carrying Case (Black)	34"

## RELIANT

Code	Item	Viewable Width
DRAST24 / DRABT24	Top Clamp (Silver / Black)	24"
DRAST34 / DRABT34	Top Clamp (Silver / Black)	34"
DRAST39	Top Clamp (Silver)	39"
DRAST48 / DRABT48	Top Clamp (Silver / Black)	48"
DRAST60 / DRABT60	Top Clamp (Silver / Black)	60"
DRRSP24 / DRRBP24	4-Part Pole (Silver / Black)	(for 24" model)
DRRSP / DRRBP	3-Part Pole (Silver / Black)	
DLSSMCS	Magnetic Top Clamp Connector	
DRRSC24	Padded Carrying Case (Black)	24"
DRRSC34	Padded Carrying Case (Black)	34"
DRRSC39	Padded Carrying Case (Black)	39"
DRRSC48	Padded Carrying Case (Black)	48"
DRRSC60	Padded Carrying Case (Black)	60"

## HORIZON

Code	Item	Viewable Width
DRHST24 / DRHBT24	Top Clamp (Silver / Black)	24"
DRHST34 / DRHBT34	Top Clamp (Silver / Black)	34"
DRHST48 / DRHBT48	Top Clamp (Silver / Black)	48"
DRHSP / DRHBP	Adjustable-Height Pole (Silver / Black)	
DRHSP24 / DRHBP24	Adjustable-Height Pole (Silver / Black)	(for 24" model)
DRHSC24	Padded / Rigid Carrying Case (Black)	24"
DRHSC34	Padded / Rigid Carrying Case (Black)	34"
DRHSC48	Padded / Rigid Carrying Case (Black)	48"

## EXECUTIVE

Code	Item	Viewable Width
DRED24	Interchangeable Graphic Cassette	24"
DRED34	Interchangeable Graphic Cassette	34"
DRED48	Interchangeable Graphic Cassette	48"
DREST15 / DREBT15	Top Clamp (Silver / Black)	15"
DREST24 / DREBT24	Top Clamp (Silver / Black)	24"
DREST34 / DREBT34	Top Clamp (Silver / Black)	34"
DREST48 / DREBT48	Top Clamp (Silver / Black)	48"
DRESP15 / DREBP15	Adjustable-Height Pole (Silver / Black)	(for 15" model)
DRESP24 / DREBP24	Adjustable-Height Pole (Silver / Black)	(for 24" model)
DRESP / DREBP	Adjustable-Height Pole (Silver / Black)	
DRESC15	Padded Carrying Case (Black)	15"
DRESC24	Padded Carrying Case (Black)	24"
DRESC34	Padded Carrying Case (Black)	34"
DRESC48	Padded Carrying Case (Black)	48"

## MAJESTIC

Code	Item	Viewable Width
DRMD34	Interchangeable Graphic Cassette	34"
DRMD39	Interchangeable Graphic Cassette	39"
DRAST34	Top Clamp (Silver)	34"
DRAST39	Top Clamp (Silver)	39"
DRASPA	Adjustable-Height Pole (Silver)	
DLSSMCS	Magnetic Top Clamp Connector	
DRMSC34	Padded Carrying Case (Black)	34"
DRMSC39	Padded Carrying Case (Black)	39"

## AMBASSADOR

Code	Item	Viewable Width
DRAD24	Interchangeable Graphic Cassette	24"
DRAD34	Interchangeable Graphic Cassette	34"
DRAD48	Interchangeable Graphic Cassette	48"
DRAD60	Interchangeable Graphic Cassette	60"
DRAST24	Top Clamp (Silver)	24"
DRAST34	Top Clamp (Silver)	34"
DRAST48	Top Clamp (Silver)	48"
DRAST60	Top Clamp (Silver)	60"
DRASP24	4-Part Pole (Silver)	(for 24" model)
DRASPA	Adjustable-Height Pole (Silver)	
DRASC24	Padded Carrying Case (Black)	24"
DRASC34	Padded Carrying Case (Black)	34"
DRASC48	Padded Carrying Case (Black)	48"
DRASC60	Padded Carrying Case (Black)	60"

## LEGACY

Code	Item	Viewable Width
DRMD34	Interchangeable Graphic Cassette	34"
DRMD39	Interchangeable Graphic Cassette	39"
DRLBT34	Top Clamp (Silver)	34"
DRLBT39	Top Clamp (Silver)	39"
DRASP2150	3-Part Pole (Silver)	
DRLBCM	Magnetic Top Clamp Connector	
DRLBC34	Padded Carrying Case (Black)	34"
DRLBC39	Padded Carrying Case (Black)	39"

## DOUBLE

Code	Item	Viewable Width
DRCST34	Top Clamp (Silver)	34"
DRDSP	3-Part Pole (Silver)	
DRDSC34	Padded Carrying Case (Black)	34"

## NOBLE

Code	Item	Viewable Width
DRMD34	Interchangeable Graphic Cassette	34"
DRAST34	Top Clamp (Silver)	34"
DRNSP	3-Part Pole (Silver)	
DLSSMCS	Magnetic Top Clamp Connector	
DRNSC34	Padded Carrying Case (Black)	34"

## SUMMIT

Code	Item	Viewable Width
DRSST34	Top Clamp (Silver)	34"
DRSSP	3-Part Pole (Silver) with Spring Base	
DRSSC34	Rigid, Wheeled Carrying Case (Black)	34"
DRSSS	Steel Ground Spikes (Kit of 4)	

## OPTIONAL POLES

Compatible models: Reliant, Majestic, Ambassador, Legacy

Code	Item	Viewable Height
DRASPAT	Tabletop Adjustable-Height Pole (Silver)	24.5" - 56"
DRASP2400	3-Part Pole (Silver)	94.5"
DRASP3000	3-Part Pole (Silver)	118"

## Papers

### PHOTO PAPER

- High-grade poster paper
- High opacity & rigidity
- Photo-realistic, outstanding color gamut

Code	Finish	Caliper	Size
SMPG30165	Gloss	8mil / 200g	30 × 165 0
SMPG42165	Gloss	8mil / 200g	42 × 165
SMPG54165	Gloss	8mil / 200g	54 × 165
SMPG60165	Gloss	8mil / 200g	60 × 165
SMPG63165	Gloss	8mil / 200g	63 × 165

Code	Finish	Caliper	Size
SMPM30150	Matte	8mil / 200g	30 × 150
SMPM36150	Matte	8mil / 200g	36 × 150
SMPM54150	Matte	8mil / 200g	54 × 150
SMPM60150	Matte	8mil / 200g	60 × 150

### PHOTO BOARD

- Extra thick
- Instant-dry
- High opacity & rigidity
- Photo-realistic, outstanding color gamut

Code	Finish	Caliper	Size
SMPXS30100	Satin	12mil / 330g	30 × 100
SMPXS54100	Satin	12mil / 330g	54 × 100
SMPXS60100	Satin	12mil / 330g	60 × 100

## Backlit Films

### BACKLIT FILM

- Premium, polyester-base film
- Front print
- Ideal for light boxes, vending machines & menu boards

Code	Finish	Caliper	Size
SMB36100	Matte	8mil	36 × 100
SMB54100	Matte	8mil	54 × 100
SMB60100	Matte	8mil	60 × 100

**EPSON**

We also sell inks! Call for pricing: 866 971-1008

## Adhesive-Backed Vinyls

### ADHESIVE-BACKED VINYL (PERMANENT)

- Calendared vinyl with clear permanent adhesive
- Great for indoor & outdoor applications
- Cost-effective



Code	Finish	Caliper	Size
SMAVG30150	Gloss	5mil	30 × 150
SMAVG48150	Gloss	5mil	48 × 150
SMAVG54150	Gloss	5mil	54 × \$112.50
SMAVG60150	Gloss	5mil	60 × 150 .17

SMAVM54150	Matte	5mil	54 × 150
------------	-------	------	----------

100% blackout version also available; call for details.

### ADHESIVE-BACKED VINYL (REMOVABLE) – WITH AIR EGRESS

- Calendared vinyl with clear removable adhesive
- Bubble-free air-egress liner
- Great for indoor & outdoor applications



Code	Finish	Caliper	Size
SMAVBFG54150	Gloss	8mil	54 × 150 \$

NEW

### PERFORATED WINDOW VINYL

- Calendared vinyl with clear removable adhesive
- 60/40 hole pattern (60% printable area)
- Perfect for storefront windows & fleet graphics



Code	Finish	Caliper	Size
SMAVF54164	Gloss	7mil	54 × 164 60 × 164
SMAVF60164	Gloss	7mil	

### CLING WINDOW VINYL

- True adhesive-free cling vinyl with liner
- Perfect for window & POP applications
- Indoor applications

Code	Finish	Caliper	Size
SMCPW50100	White Gloss	5mil	50 × 100

Adhesive-backed with a pressure-sensitive (cold) adhesive

New, lower price for 2015



## Display Films

*The ideal choice for retractable banner stands*

### PHOENIX OPAQUE DISPLAY FILM

- PVC Vinyl / polyester blend base film
- Tear-resistant
- Opaque gray backer
- Lay-flat, ideal for retractable banner stands

Code	Finish	Caliper	Size
SMDXT36100	Textured Satin	9mil	36 × 100
SMDXT54100	Textured Satin	9mil	54 × 100
SMDXT60100	Textured Satin	9mil	60 × 100

### CONSTELLATION DISPLAY FILM

- Polypropylene base film
- Economical alternative to polyester film
- Tear-resistant
- Cold laminate only
- Fast dry time & water-resistant

Code	Finish	Caliper	Size
SMDPP36100	Satin	7mil	36 × 100
SMDPP54100	Satin	7mil	54 × 100
SMDPP60100	Satin	7mil	60 × 100

### ENDEAVOR BLOCKOUT DISPLAY FILM

- Polyethylene / polypropylene blend base film
- Tear-resistant
- Blockout layer
- Lay-flat, ideal for pop-ups & retractable banner stands

Code	Finish	Caliper	Size
SMDXS36100	Satin	11mil	36 × 100
SMDXS50100	Satin	11mil	50 × 100
SMDXS60100	Satin	11mil	60 × 100

### RANGER BLOCKOUT DISPLAY FILM

- Premium polyester base film
- Blockout gray backer
- Stiff & tear-resistant
- Water-resistant
- Anti-curl, lies ultra flat
- Exceptional laminate receptivity (hot or cold)
- Premium choice for retractable banner stands

Code	Finish	Caliper	Size
SMDPS3666	Semi-Gloss	7mil	36 × 66
SMDPS4266	Semi-Gloss	7mil	42 × 66
SMDPS5466	Semi-Gloss	7mil	54 × 66

### PIONEER BLOCKOUT DISPLAY FILM

- Polyester / polypropylene blend base film
- Tear-resistant
- Stiff & tear-resistant
- Blockout silver backer
- Lay-flat, ideal for pop-up displays

Code	Finish	Caliper	Size
SMPOP3665	Satin	14mil	36 × 65
SMPOP4865	Satin	14mil	48 × 65
SMPOP6065	Satin	14mil	60 × 65

### MERCURY OPAQUE DISPLAY FILM

- Stiff PVC base film
- Tear- & water-resistant
- Opaque, lay-flat
- Ideal for slide-in poster frames
- **Not recommended for Latex**

Code	Finish	Caliper	Size
SMDH3666	Satin	18mil	36 × 66
SMDH5466	Satin	18mil	54 × 66

## Attention latex printers!

*This popular, water-based display film works great on your latex machine!*

### LUNAR BLOCKOUT DISPLAY FILM

- Tear-resistant, lay-flat, polypropylene-base film
- Economical alternative to polyester film
- Fast-dry coating
- 100% opaque white back
- Cold laminate ONLY
- Ideal for short-term retail signage

Code	Finish	Caliper	Size
PPB36100	Matte	8mil	36 × 100
PPB42100	Matte	8mil	42 × 100
PPB50100	Matte	8mil	50 × 100
PPB60100	Matte	8mil	60 × 100

NEW

 New, lower price for 2015

## Scrim Vinyl Banner

### SCRIM VINYL BANNER – SINGLE-SIDED

- 15mil, 9x9 thread, 1000x1000 denier
- Bright white print surface
- Can be sewn or heat-sealed
- Fire-retardant
- Ideal for large, outdoor graphics

Code	Finish	Caliper	Size
SMV13GT38150	Gloss	13oz	38 x 150
SMV13GT54150	Gloss	13oz	54 x 150
SMV13GT60150	Gloss	13oz	60 x 150
SMV13MT38150	Matte	13oz	38 x 150
SMV13MT54150	Matte	13oz	54 x 150
SMV13MT60150	Matte	13oz	60 x 150

### SCRIM VINYL BANNER – DOUBLE-SIDED

- 13mil, printable on both sides
- Micro-textured smooth surface
- Scratch-resistant
- Can be sewn or heat-sealed
- 100% blockout
- Fire-retardant
- Can be sewn or heat-sealed
- Ideal for large, outdoor graphics

Code	Finish	Caliper	Size
NEW SMV13MD38150	Matte	13oz	38 x 150
NEW SMV13MD54150	Matte	13oz	54 x 150
NEW SMV13MD60150	Matte	13oz	60 x 150

**EPSON**

*We also sell inks! Call for pricing: 866 971-1008*

## Fabrics

### VIKING FABRIC BANNER

- Durable 100% polyester flag base
- Lay-flat qualities to avoid head strikes
- Fast-dry, scratch-resistant
- Resists feed-bunching in printer

#### AVAILABLE WEIGHTS:

- Light: 145gsm, 150x150 denier
- Heavy: 250gsm, 600x600 denier

Code	Finish	Caliper	Size	Price A
SMFLS36150	Satin	8mil	36 x 150	
SMFLS54150	Satin	8mil	54 x 150	
SMFHS36100	Satin	12mil	36 x 150	
SMFHS54100	Satin	12mil	54 x 150	

### CANVAS

- Polyester/cotton blend
- 435gm (satin), 365gm (matte)
- Fast dry time, waterfast
- Excellent flexibility for stretching/framing

Code	Finish	Caliper	Size
SMCS3650	Satin	17mil	36 x 50
SMCS5450	Satin	17mil	54 x 50
SMCS6050	Satin	17mil	60 x 50
NEW SMCM3675	Matte	18mil	36 x 75
NEW SMCM5475	Matte	18mil	54 x 75
NEW SMCM6075	Matte	18mil	60 x 75

## Fabric, a great choice for banner stands



- Unique, decorative look and feel
- Natural stay-flat characteristics
- Scratch- and crease-resistant surface
- Durable, long-lasting image quality

↓ New, lower price for 2015

## Papers

### PHOTO PAPER

- High-quality RC (resin-coated) base
- Microporous, instant-dry coating
- Excellent color gamut and soft gradients
- Exceptional laminate receptivity
- Ideal for photo-realistic image reproductions

Code	Finish	Caliper	Size
PGID24100	Gloss	8mil	24 × 100
PGID36100	Gloss	8mil	36 × 100
PGID42100	Gloss	8mil	42 × 100
PGID50100	Gloss	8mil	50 × 100
PGID60100	Gloss	8mil	60 × 100

*Also available in satin finish in same sizes and at same prices.*

<b>NEW</b>	PSTID24100	Textured Satin	10mil	24 × 100	L
<b>NEW</b>	PSTID36100	Textured Satin	10mil	36 × 100	
<b>NEW</b>	PSTID42100	Textured Satin	10mil	42 × 100	
<b>NEW</b>	PSTID50100	Textured Satin	10mil	50 × 100	
<b>NEW</b>	PSTID60100	Textured Satin	10mil	60 × 100	

### PERFORMANCE PAPER

- FSC (Forest Stewardship Council) certified paper
- High-opacity base
- Economical alternative to photo paper
- Fast-dry coating
- Barrier coated to avoid ink saturation (cockling)
- Exceptional laminate receptivity
- Ideal for display graphics and photo-realistic image reproduction

Code	Finish	Caliper	Size
EM24100	Matte	7.5mil	24 × 100
EM36100	Matte	7.5mil	36 × 100
EM42100	Matte	7.5mil	42 × 100
EM50100	Matte	7.5mil	50 × 100
EM60100	Matte	7.5mil	60 × 100

### HEAVYWEIGHT (COATED BOND) PAPER





- FSC (Forest Stewardship Council) certified paper
- Fast-dry coating
- Exceptional laminate receptivity
- Ideal for display graphics and technical drawings

Code	Finish	Basis Weight	Size
<b>NEW</b>	MTH24100	Matte	48lb 24 × 100
	MTH36100	Matte	48lb 36 × 100
	MTH42100	Matte	48lb 42 × 100
	MTH50100	Matte	48lb 50 × 100
	MTH60100	Matte	48lb 60 × 100

## Backlit Film

### BACKLIT FILM

- Premium polyester-base film
- Microporous, instant-dry coating (gloss)
- High-density ink performance (front print)
- Brilliant, vivid colors
- Water-resistant
- High scratch resistance
- Exceptional laminate receptivity
- Ideal for lightboxes, vending machines & menu boards

Code	Finish	Caliper	Size	Price A / sq ft A	Price B / sq ft B
 BFIDM36100	Matte	9mil	36 × 100	\$186.25 \$0.62	\$177.00 \$0.59
 BFIDM42100	Matte	9mil	42 × 100	\$217.25 \$0.62	\$206.50 \$0.59
 BFIDM50100	Matte	9mil	50 × 100	\$258.75 \$0.62	\$245.75 \$0.59
 BFIDM60100	Matte	9mil	60 × 100	\$310.25 \$0.62	\$294.75 \$0.59

## Adhesive-Backed Films

### ADHESIVE-BACKED POLYPROPYLENE

- Tear-resistant, polypropylene-base film
- Permanent, pressure-sensitive adhesive
- Fast-dry, water-resistant
- Cold laminate ONLY
- Ideal for short-term retail signage

Code	Finish	Caliper	Size	Price A / sq ft A	Price B / sq ft B
PPDIMA24100	Matte	6.5mil	24 × 100	\$77.25 \$0.39	\$73.50 \$0.37
PPDIMA36100	Matte	6.5mil	36 × 100	\$115.75 \$0.39	\$110.25 \$0.37
PPDIMA42100	Matte	6.5mil	42 × 100	\$135.00 \$0.39	\$128.50 \$0.37
PPDIMA50100	Matte	6.5mil	50 × 100	\$161.00 \$0.39	\$153.00 \$0.37
PPDIMA60100	Matte	6.5mil	60 × 100	\$193.00 \$0.39	\$183.25 \$0.37

### ADHESIVE-BACKED VINYL

- Flexible, smooth PVC (calendared) vinyl base
- Permanent, pressure-sensitive adhesive
- Fast-dry, water-resistant
- Cold laminate ONLY
- Ideal for short-term outdoor projects

Code	Finish	Caliper	Size
AVP24100	Matte	5mil	24 × 100
AVP36100	Matte	5mil	36 × 100
AVP42100	Matte	5mil	42 × 100
AVP50100	Matte	5mil	50 × 100
AVP60100	Matte	5mil	60 × 100

 Adhesive-backed with a pressure-sensitive (cold) adhesive

 This media also works with latex printers

 New, lower price for 2015



## Display Films

*The ideal choice for retractable banner stands*

### ORION DISPLAY FILM

- Tear-resistant, polypropylene-base film
- Fast-dry coating, water-resistant
- Cold laminate ONLY
- Ideal for short-term retail signage



Code	Finish	Caliper	Size
PPIDM24100	Matte	8mil	24 × 100
PPIDM36100	Matte	8mil	36 × 100
PPIDM42100	Matte	8mil	42 × 100
PPIDM50100	Matte	8mil	50 × 100
PPIDM60100	Matte	8mil	60 × 100

### LUNAR BLOCKOUT DISPLAY FILM

- Tear-resistant, lay-flat, polypropylene-base film
- Economical alternative to polyester film
- Fast-dry coating
- 100% opaque white back
- Cold laminate ONLY
- Ideal for short-term retail signage



Code	Finish	Caliper	Size
PPB36100	Matte	8mil	36 × 100
PPB42100	Matte	8mil	42 × 100
PPB50100	Matte	8mil	50 × 100
PPB60100	Matte	8mil	60 × 100

### ODYSSEY BLOCKOUT DISPLAY FILM

- Tear-resistant, polyester-base film
- Microporous, instant-dry coating (satin)
- Fast-dry coating, water-resistant (matte)
- 100% opaque, lay-flat film
- Water-resistant
- Sharp image quality, outstanding color gamut
- Exceptional thermal and cold-laminate receptivity
- Ideal for tradeshow graphics & retractable banner stands

Code	Finish	Caliper	Size
FWIDG36100	Gloss	5mil	36 × 100
FWIDG42100	Gloss	5mil	42 × 100
FWIDG50100	Gloss	5mil	50 × 100
FWIDG60100	Gloss	5mil	60 × 100
RBSMM36100	Matte	6mil	36 × 100

### GEMINI BLOCKOUT DISPLAY FILM

- Tear-resistant, polyester-base film
- 100% opaque, lay-flat film
- Fast-dry, water-resistant
- Sharp image quality, outstanding color gamut
- Exceptional thermal and cold-laminate receptivity
- Ideal for tradeshow graphics & pop-up displays

Code	Finish	Caliper	Size
POPM3665	Matte	14mil	36 × 65
POPM5065	Matte	14mil	50 × 65
POPM6065	Matte	14mil	60 × 65

### SURVEYOR TEXTURED DISPLAY FILM

- Decorative, subtle non-woven fabric texture
- 100% recyclable
- Fast-dry, water-resistant
- May be used as fine art material
- Ideal for indoor & outdoor banners, decorative POS displays



Code	Finish	Caliper	Size
NWTM36100	Matte	22mil	36 × 100
NWTM5060	Matte	22mil	50 × 60
NWTM6060	Matte	22mil	60 × 60

## Scrim Vinyl Banner

### SCRIM VINYL BANNER

- Fast-dry, water-resistant
- Suitable for grommeting, welding & sewing
- Ultra-smooth finish, for excellent image definition
- Ideal for outdoor banners

Code	Finish	Caliper	Size
HIGH-DENSITY OPAQUE			
SV15N3660	Matte	15mil	36 × 60
SV15N4260	Matte	15mil	42 × 60
SV15N5060	Matte	15mil	50 × 60
SV15N6060	Matte	15mil	60 × 60

Code	Finish	Caliper	Size
OPAQUE			
SV17P2475	Matte	17mil	24 × 75
SV17P3675	Matte	17mil	36 × 75
SV17P4275	Matte	17mil	42 × 75
SV17P5075	Matte	17mil	50 × 75
SV17P6075	Matte	17mil	60 × 75

*100% blackout version also available; call for details.*

This media also works with latex printers

New, lower price for 2015

## Fabrics

### MARINER FABRIC BANNER

- Durable 100% polyester flag base
- Fast-dry, water-resistant
- Resists feed-bunching in printer
- Ideal for short-term indoor/outdoor projects



Code	Finish	Caliper	Size
------	--------	---------	------

LIGHT WEIGHT (150gsm, 150 x 150 denier)

PFBL36150	Matte	8mil	36 x 150
PFBL42150	Matte	8mil	42 x 150
PFBL50150	Matte	8mil	50 x 150
PFBL60150	Matte	8mil	60 x 150

HEAVY WEIGHT (180gsm, 300 x 300 denier)

PFBH24150	Matte	9mil	24 x 150
PFBH36150	Matte	9mil	36 x 150
PFBH50150	Matte	9mil	50 x 150
PFBH60150	Matte	9mil	60 x 150

SUPER HEAVY WEIGHT (220gsm, 600 x 300 denier)

PFBS24100	Matte	13mil	24 x 100
PFBS36100	Matte	13mil	36 x 100
PFBS42100	Matte	13mil	42 x 100
PFBS50100	Matte	13mil	50 x 100
PFBS60100	Matte	13mil	60 x 100

### POLYESTER FABRIC BANNER – DOUBLE-SIDED / BLOCKOUT

- 100% polyester base
- 100% blockout, printable both sides
- Fast-dry, water-resistant
- Resists feed-bunching in printer
- Ideal for short-term indoor/outdoor projects
- Excellent alternative to scrim vinyl banner



Code	Finish	Caliper	Size
------	--------	---------	------

PFBD3660	Matte	20mil	36 x 60
----------	-------	-------	---------

## Canvas

### INSTANT-DRY CANVAS

- Premium-grade cotton/poly blend base
- Microporous, instant-dry coating
- Excellent light stability
- Water-resistant
- Exceptional color gamut
- Excellent flexibility for stretching without cracking

Code	Finish	Caliper	Size
------	--------	---------	------

2:1 WEAVE STRUCTURE, 390gsm

CIDG2440	Semi-Gloss	19mil	24 x 40
CIDG3640	Semi-Gloss	19mil	36 x 40
CIDG4440	Semi-Gloss	19mil	44 x 40
CIDG5040	Semi-Gloss	19mil	50 x 40

2:1 WEAVE STRUCTURE, 350gsm

CIDS2440	Satin	19mil	24 x 40
CIDS3640	Satin	19mil	36 x 40
CIDS4240	Satin	19mil	42 x 40
CIDS4440	Satin	19mil	44 x 40
CIDS5440	Satin	19mil	54 x 40
CIDS6040	Satin	19mil	60 x 40

### FAST-DRY CANVAS

- Fast-dry, water-resistant
- Low cost for commercial decor environments
- Cotton/poly blend base
- 1:1 weave structure

Code	Finish	Caliper	Size
------	--------	---------	------

CFDM2440	Matte	15mil	24 x 40
CFDM3640	Matte	15mil	36 x 40
CFDM4240	Matte	15mil	42 x 40
CFDM5040	Matte	15mil	50 x 40
CFDM6040	Matte	15mil	60 x 40

EPSON



Canon

We also sell inks! Call for pricing: 866 971-1008

## Slap-Band

This clever roll manager is designed to keep your unused printable media and/or lamination rolls from unraveling on the production floor. Measuring 18" long and featuring non-marring rubber, our slap-band is ideal for preserving your inventory and keeping your graphics department organized.



Code	Capacity	Roll Core Size
MSRH	1 roll	All Sizes

This media also works with latex printers

New, lower price for 2015

## Heat-Activated Laminating Film

### LOW-MELT U V LAMINATING FILM (190°–210°)

Thermal “low melt” ultraviolet (UV) polyester (PET) laminates are ideal for a wide range of applications including signs, banners, posters and trade show exhibit graphics.



Code	Finish	Caliper	Size
IG38503	Gloss	3mil (1/2)	38 × 500
IG43503	Gloss	3mil (1/2)	43 × 500
IG51503	Gloss	3mil (1/2)	51 × 500
IG61503	Gloss	3mil (1/2)	61 × 500
IG38255	Gloss	5mil (2/3)	38 × 250
IG43255	Gloss	5mil (2/3)	43 × 250
IG51255	Gloss	5mil (2/3)	51 × 250
IG61255	Gloss	5mil (2/3)	61 × 250
IG382073	Gloss	10mil (7/3)	38 × 200
IG432073	Gloss	10mil (7/3)	43 × 200
IG512073	Gloss	10mil (7/3)	51 × 200
IG612073	Gloss	10mil (7/3)	61 × 200
IM38503	Matte	3mil (1/2)	38 × 500
IM43503	Matte	3mil (1/2)	43 × 500
IM51503	Matte	3mil (1/2)	51 × 500
IM61503	Matte	3mil (1/2)	61 × 500
IM38255	Matte	5mil (2/3)	38 × 250
IM43255	Matte	5mil (2/3)	43 × 250
IM51255	Matte	5mil (2/3)	51 × 250
IM61255	Matte	5mil (2/3)	61 × 250

*Luster finish also available in these same widths and thickness. Please call for pricing.*

### THERMAL DRY-ERASE LAMINATING FILM (200°–230°)

Scratch-resistant, ultra-clear polypropylene (PP) thermal encapsulating films are specifically designed for turning prints into dry-erase boards.



Code	Finish	Caliper	Size	Price A
OPP38253	Gloss	3mil	38 × 250	
OPP51253	Gloss	3mil	51 × 250	

### LOW-MELT VINYL U V LAMINATING FILM (150°–200°)

Our unique line of heat-assist vinyl laminates incorporates the patented SuperStick® adhesive technology into a linerless heat-activated laminate. These laminates allow for greater flexibility on sensitive prints due to very low activation temperatures.



Code	Finish	Caliper	Size
FGK38207	Floor Texture	7mil	38 × 200
FGK51207	Floor Texture	7mil	51 × 200
FGC382010	Canvas Texture	10mil	38 × 200
FGC512010	Canvas Texture	10mil	51 × 200

## Pressure-Sensitive Laminating Film

### P S VINYL LAMINATING FILM

Pressure-sensitive vinyl (PVC) laminates run evenly and smoothly to enhance your finished product. These pressure-sensitive laminates offer a clean finish and added durability to meet you application requirements.

Code	Finish	Caliper	Size
PSLG38150	Gloss	4mil (3/1)	38 × 150
PSLG43150	Gloss	4mil (3/1)	43 × 150
PSLG51150	Gloss	4mil (3/1)	51 × 150
PSLG54150	Gloss	4mil (3/1)	54 × 150
PSLG61150	Gloss	4mil (3/1)	61 × 150
PSLL38150	Luster	4mil (3/1)	38 × 150
PSLL43150	Luster	4mil (3/1)	43 × 150
PSLL51150	Luster	4mil (3/1)	51 × 150
PSLL54150	Luster	4mil (3/1)	54 × 150
PSLL61150	Luster	4mil (3/1)	61 × 150
PSLM38150	Matte	4mil (3/1)	38 × 150
PSLM43150	Matte	4mil (3/1)	43 × 150
PSLM51150	Matte	4mil (3/1)	51 × 150
PSLM54150	Matte	4mil (3/1)	54 × 150
PSLM61150	Matte	4mil (3/1)	61 × 150
PSLT38150	Satin Textured	6mil (5/1)	38 × 150
PSLT51150	Satin Textured	6mil (5/1)	51 × 150
9 PSLT61150	Satin Textured	6mil (5/1)	61 × 150
PSLF38150	Floor Textured	6mil (5/1)	38 × 150
PSLF54150	Floor Textured	6mil (5/1)	43 × 150



### P S POLYCARBONATE (LEXAN) LAMINATING FILM

An extremely durable film that adds a unique textured look to your print. This tough and flexible lamination is ideal for trade show exhibits and other demanding applications.



Code	Finish	Caliper	Size
PH38155	Satin Textured	5mil (4/1)	38 × 150
PH51155	Satin Textured	5mil (4/1)	51 × 150
PH38150	Satin Textured	12mil (10/2)	38 × 150
PH51150	Satin Textured	12mil (10/2)	51 × 150
PH381515	Satin Textured	15mil (12/3)	38 × 150
PH511515	7 Satin Textured	15mil (12/3)	51 × 150

### P S U V HARDCOAT (ANTI-GRAFFITI) LAMINATING FILM

Our hardcoat gloss film provides excellent protection against graffiti and is a superior choice as a dry-erase film that leaves no ghosting. This premium film also provides the highest level of UV protection.



Code	Finish	Caliper	Size
HCG38150	Gloss	2mil (1/1)	38 × 150
HCG51150	Gloss	2mil (1/1)	51 × 150
HCG38155	Gloss	5mil (3/2)	38 × 150
HCG51155	Gloss	5mil (3/2)	51 × 150



## Pressure-Sensitive Mounting Adhesive

### P S STANDARD MOUNTING ADHESIVE – CLEAR

An economical double-sided solvent rubber adhesive for digital prints that permanently bonds to both soft and rigid substrates. Ideal for use with indoor and short-term outdoor applications. Recommended for foamboards and other porous substrates.

**Construction:** .5mil adhesive / .5mil clear polyester carrier / .5 mil adhesive.

Code	Finish	Caliper	Size
MES38200	Clear	1.5mil	38 × 200
MES38300	Clear	1.5mil	38 × 300
MES43200	Clear	1.5mil	43 × 200
MES43300	Clear	1.5mil	43 × 300
MES51200	Clear	1.5mil	51 × 200
MES51300	Clear	1.5mil	51 × 300

### P S PREMIUM MOUNTING ADHESIVE – CLEAR

A premium double-sided solvent rubber pressure-sensitive adhesive perfect for mounting digital, photographic, and reprographic prints to a variety of substrates, including foamboard, wood and plastic. Provides a strong, permanent bond for both indoor and outdoor applications.

**Construction:** 1mil adhesive / 1mil clear polyester carrier / 1mil adhesive.

Code	Finish	Caliper	Size
MG38200	Clear	3mil	38 × 200
MG43200	Clear	3mil	43 × 200
MG51200	Clear	3mil	51 × 200
MG51300	Clear	3mil	51 × 300
MG61200	Clear	3mil	61 × 200

### P S PREMIUM MOUNTING ADHESIVE – WHITE

A premium double-sided solvent rubber pressure-sensitive adhesive perfect for mounting digital, photographic, and reprographic prints to a variety of substrates, including foamboard, wood, and plastic. Provides a strong, permanent bond for both indoor and outdoor applications. The white polypropylene carrier film blocks out back-light or dark mounting substrates and helps hide board imperfections.

**Construction:** 1mil adhesive / 2mil white polypropylene carrier / 1mil adhesive.

Code	Finish	Caliper	Size
MUA38150	White	4mil	38 × 150
MUA43150	White	4mil	43 × 150
MUA51150	White	4mil	51 × 150
MUA51300	White	4mil	51 × 300
MUA61150	White	4mil	61 × 150

### P S FLOOR GRAPHIC MOUNTING ADHESIVE

Offers a permanent adhesive on one side and a removable adhesive on the other. The opaque finish diminishes the effect of light – important for trade show graphics. Perfect for images that are intended to be removed after a period of time, such as decals, signs and displays.



Code	Adhesive	Opacity	Size
FIC38150	Perm./Rem.	Clear	38 × 150
FIC51150	Perm./Rem.	Clear	51 × 150
FI38150	Perm./Rem.	Opaque	38 × 150
FI51150	Perm./Rem.	Opaque	51 × 150

### P S OPTICALLY CLEAR MOUNTING ADHESIVE

Perfect for backlit applications when permanent mounting to plexiglass and other substrates such as glass and lenticular lens is desired. This double permanent/permanent and permanent/removable adhesive is designed for easy removal from glass, plexiglass or acrylic sheet within six months of application.

Code	Adhesive	Opacity	Size
OC38200	Permanent	Optically Clear	38 × 200
OC51200	Permanent	Optically Clear	51 × 200
OC61200	Permanent	Optically Clear	61 × 200
OCR38200	Removable	Optically Clear	38 × 200
OCR51200	Removable	Optically Clear	51 × 200
OCR61200	Removable	Optically Clear	61 × 200

## Pressure-Sensitive Foamboard

### GILMAN® INSITE REVEAL® PRESSURE-SENSITIVE FOAMBOARD

- Precoated with permanent, pressure-sensitive adhesive
- Includes heavy-release liner
- Engineered with proprietary “memory” foam center
- Highly warp-resistant
- Smooth, clay-coated paper surface
- 25 boards per case

Code	Color	Thickness	Size
INRWPS2436	White	3/16"	24 × 36
INRWPS3240	White	3/16"	32 × 40
INRWPS4060	White	3/16"	40 × 60

# FINISHING SUPPLIES

## Heat-Activated Mounting Adhesive

### DRY MOUNTING FILM – FOR INKJET CANVAS GICLEE

Our canvas mounting film is perfect for mounting your most challenging and delicate canvas giclees. It features a polyester carrier with two different and unique thermal adhesive-coated sides: one side is coated for the aggressive, permanent and archival bond to the canvas; the other side's coating is designed for rigid boards (foamboard, Gator board, Ryno board, Coroplast, Sintra, acrylic sheet, etc.).



Code	Adhesive	Opacity	Size
DMC24150	Permanent	Clear	24 x 150
DMC48150	Permanent	Clear	48 x 150

### DRY MOUNTING TISSUE

Our dry mounting tissue paper is engineered to create a permanent bond between porous paper media and porous substrates such as foamboard and mat board. For use in heated vacuum presses.

Code	Adhesive	Opacity	Size
DMP245300	Permanent	Opaque	24.5 x 300
DMP365300	Permanent	Opaque	36.5 x 300
DMP405300	Permanent	Opaque	40.5 x 300
DMP485300	Permanent	Opaque	48.5 x 300

## Release Paper

### RELEASE PAPER

Silicone-coated release paper is used to protect artwork and equipment from mounting adhesive and residue. May be used with mechanical mounting presses, vacuum presses and roller laminators.

Code	Coated	Size
RP42902	2 Sides	42 x 90

## Heat-Activated Foamboard

### GILMAN® INSITE REVEAL® HEAT-ACTIVATED FOAMBOARD

- Precoated with permanent, heat-activated adhesive
- Engineered with proprietary “memory” foam center
- Highly warp-resistant
- Smooth, clay-coated paper surface
- Low-temperature activation point of 180°F
- 25 boards per case

Code	Color	Thickness	Size
INRWHA2436	White	3/16"	24 x 36
INRWHA3240	White	3/16"	32 x 40
INRWHA4060	White	3/16"	40 x 60

## ORDERING CUSTOM-PRINTED ITEMS

We are very serious about protecting our customers' interests. With that in mind, we have carefully selected a few items in our lineup for which we will offer printing services in addition to the hardware items we have traditionally sold. The only print items we are offering are direct-to-fabric dye-sublimation products. These products involve a process that the vast majority of our customers are currently outsourcing. While this is a new direction for Catapult, it is not in any way a departure from our rigorous efforts to remain a true “to the trade only” manufacturer.

# 1

### Place Your Order

Choose the size, style, and quantity of your hardware item and the corresponding print item.



# 2

### Download the Design Template

Visit [catapultlaunch.com](http://catapultlaunch.com) to download the design template for the item you are ordering.



# 3

### Upload Your Finished Graphic File

Visit [www.wetransfer.com](http://www.wetransfer.com) to upload and transfer your completed PDF, EPS, or AI file from your email address of choice to: [art@www.bciimage.com](mailto:art@www.bciimage.com)



# 4

### Approve the Proof

Once completed (within 2 business hours of submittal), an electronic proof will be sent via [wetransfer.com](http://wetransfer.com) to the email address you used to submit your artwork. If the proof meets your approval, simply reply to the proof email, letting us know to proceed with printing. Please be sure to review your proof carefully, as the sale will be considered final once your approval is received.



# 5

### Track the Shipping

Upon completion of your print job (depending on the size of your order, usually within 3 business days), you will receive a confirmation email complete with tracking information.



*If you need help at any point in this process, please do not hesitate to contact us and talk to a member of our Customer Support Team. 866 971-1008*