

# TABLE TOP DISPLAYS

These compact table top displays create professional presentations that you can take anywhere!

- Choose from standard panel systems, pop-ups or briefcase table top displays
- Lightweight and portable, these displays travel easily



## Over The Top Table Top Displays

Do you want multiple display options from just one table top? The frame converts to fit 6' or 8' tables and the three graphic sizes offer various display configurations. Use as a simple sign-up booth, as a back wall to accompany a table throw or place on the floor and use with other products to create a large trade show presence. See Page 109



## Suggested Product Uses

- Trade Shows
- Civic Events
- Presentations
- Fairs & Festivals
- Retail Kiosks
- Company Showrooms



Perfect for any registration event.

# DYNAMO TRIFECTA DISPLAYS

1 YEAR  
HARDWARE  
WARRANTY



6' Display, Kit B shown with 6' Standard Throw with Thermal Imprint

Frameless display has rounded corners

Carry Case included (Color may vary)

Lightweight and affordable, this table top display is perfect for the budget-conscious marketer.

Fabric hinges allow the display to fold up for convenient transport.

## Dynamo Trifecta

Item #	Description	1	2-5	6-11	12-24
141007	4' Display Only	138.00	133.00	128.00	123.00
141009	4' Display with Graphics	260.00	240.00	220.00	200.00
141008	6' Display Only	158.00	153.00	148.00	143.00
141010	6' Display with Graphics	365.00	345.00	325.00	305.00

(C)

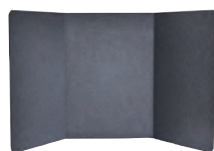
## Graphics Only

Item #	Description	1	2-5	6-11	12-24
190023	4' Detachable Graphic	63.00	47.00	37.00	32.00
190014	6' Detachable Graphic	95.00	84.00	74.00	68.00

(C)

Available Fabric Colors Blue-PMS 2728 Gray-PMS 422 Black

## DISPLAY OPTIONS



Display Only Includes:

- Display (No Graphics)
- Carry Case



Display with Graphics Includes:

- Display
- (3) Graphic Panels
- Carry Case



Velcro® receptive fabric on both sides of the display make it easy to add and change graphics.

STANDARD LEAD TIME  
**3 DAYS**  
FROM PROOF APPROVAL

## PRODUCT SPECIFICATIONS

Description	Product Size	Finished Graphic Size	Product Wt.	Graphic Media
4' Dynamo	54"W x 24"H x 22"D	17"W x 23"H	5 lbs.	Laminated No Curl
6' Dynamo	72"W x 36"H x 22"D	23"W x 34.75"H	10 lbs.	Laminated No Curl

Imprint set-up fee: \$40.00(G)

View current graphic templates, assembly videos and instructions on our website  
See pages 168-170 for additional information that may apply to your order

**HARDWARE ONLY LEAD TIME: SHIPS SAME DAY WHEN ORDERED BEFORE 2 PM CST**

## Suggested Uses:

- College Recruiting
- Trade Shows
- Sales Meetings
- Presentations

## OPTIONAL ADD-ON

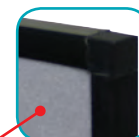


Ultimate LED Light  
Item # 150120  
See Page 148



1 YEAR  
HARDWARE  
WARRANTY

# FAST TRAK DISPLAYS



Plastic frame has square corners



Kit C shown with 6' Standard Table  
Throw with Thermal Imprint



Carry Case included  
(Color may vary)

Display features a seamless, lightweight design with an easy clip-on header for a clean, professional presentation. The double-acting hinges create a versatile display that can be used double-sided. For quick set up and tear down, graphics can be left attached. Store display in protective carry case.

## Fast Trak

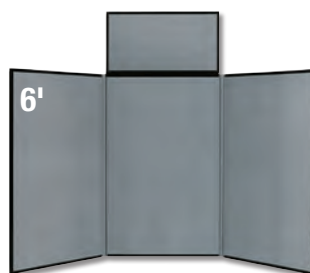
Item #	Description	1	2-5	6-11	12-24
146084	4' Fast Trak - Kit A	280.00	270.00	250.00	230.00
146011	4' Fast Trak - Kit B	325.00	305.00	275.00	245.00
146012	4' Fast Trak - Kit C	485.00	445.00	400.00	355.00
146085	6' Fast Trak - Kit A	315.00	305.00	285.00	265.00
146014	6' Fast Trak - Kit B	365.00	345.00	315.00	285.00
146015	6' Fast Trak - Kit C	595.00	555.00	515.00	475.00

(C)

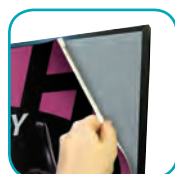
## Graphics Only

Item #	Description	1	2-5	6-11	12-24
190015	4' Detachable Header Graphic	53.00	32.00	24.00	19.00
190013	6' Detachable Header Graphic	63.00	42.00	37.00	32.00
190017	4' Detachable Panel Graphic	73.00	58.00	47.00	42.00
190014	6' Detachable Panel Graphic	95.00	84.00	74.00	68.00

(C)



Available Fabric Colors Blue-PMS 287 Gray-PMS 430 Black



Velcro® receptive fabric makes changing graphics quick and easy.

## KIT OPTIONS



Kit A Includes:  
• Display (No Graphics)  
• Carry Case



Kit B Includes:  
• Display  
• Graphic Header  
• Carry Case



Kit C Includes:  
• Display  
• Graphic Header  
• (3) Graphic Panels  
• Carry Case

## PRODUCT SPECIFICATIONS

Description	Product Size	Panel Graphic Size	Header Size	Header Graphic Size	Product Wt.	Graphic Media
4' Fast Trak	54"W x 37"H x 22"D	17"W x 26.75"H	18"W x 8"H	17"W x 7"H	10 lbs.	Laminated No Curl
6' Fast Trak	72"W x 48"H x 22"D	23"W x 34.75"H	24"W x 12"H	22.75"W x 10.75"H	15 lbs.	Laminated No Curl

Imprint set-up fee: \$40.00(G)

View current graphic templates, assembly videos and instructions on our website

See pages 168-170 for additional information that may apply to your order

HARDWARE ONLY LEAD TIME: SHIPS SAME DAY WHEN ORDERED BEFORE 2 PM CST

STANDARD LEAD TIME  
**3 DAYS**  
FROM PROOF APPROVAL

# SHOW 'N WRITE & SHOW 'N FOLD DISPLAYS

**1 YEAR  
HARDWARE  
WARRANTY**

Custom configuration shown,  
header & end panels are flipped  
(see below for details)\*

Plastic frame has  
rounded corners

**EASY  
SET-UP**



6' Show 'N Write Display with Graphics  
and optional 6' Header Graphic on a 6'  
Standard Table Throw with Thermal Imprint

Carry Case included  
(Color may vary)

**Both of these displays feature versatile panel options.** Show 'N Fold features Velcro® receptive fabric on both sides of the display, while the Show 'N Write features dry erase boards on one side. For quick set up and tear down, graphics can be left attached. Store display in protective carry case.

## Show 'N Write

Item #	Description	1	2-5	6-11	12-24
142004	4' Display Only	260.00	250.00	240.00	230.00
142006	4' Display with Graphics	440.00	390.00	360.00	325.00
142007	6' Display Only	315.00	305.00	295.00	285.00
142009	6' Display with Graphics	585.00	555.00	515.00	485.00

(C)

## Show 'N Fold

Item #	Description	1	2-5	6-11	12-24
147003	4' Display Only	315.00	305.00	295.00	285.00
147005	4' Display with Graphics	490.00	440.00	410.00	380.00
147006	6' Display Only	345.00	335.00	325.00	315.00
147008	6' Display with Graphics	625.00	585.00	545.00	515.00

(C)

## Graphics Only

Item #	Description	1	2-5	6-11	12-24
190023	4' Panel Graphic	63.00	47.00	37.00	32.00
190014	6' Panel Graphic	95.00	84.00	74.00	68.00
190015	4' Header Graphic	53.00	32.00	24.00	19.00
190013	6' Header Graphic	63.00	42.00	37.00	32.00

(C)

**Available Fabric Colors**  Blue-PMS 2728  Gray-PMS 422  Black

\*Show 'N Write Display ships with all panels, dry erase side up. If you would like a different combination (as shown on this page), please contact Customer Care. Additional charges may apply.

## DISPLAY OPTIONS



Display Only Includes:  
• Display (No Graphics)  
• Carry Case



Display with Graphics Includes:  
• Display  
• (1) Graphic Header  
• (3) Graphic Panels  
• Carry Case



Velcro® receptive fabric makes changing graphics quick and easy.

## PRODUCT SPECIFICATIONS

Description	Product Size	Panel Graphic Size	Header Size	Header Graphic Size	Product Wt.	Graphic Media
4' Displays	54"W x 32"H x 22"D	17"W x 23"H	18"W x 8"H	17"W x 7"H	12 lbs.	Laminated No Curl
6' Displays	72"W x 48"H x 30"D	23"W x 34.75"H	24"W x 12"H	22.75"W x 10.75"H	20 lbs.	Laminated No Curl

Imprint set-up fee: \$40.00(G)

View current graphic templates, assembly videos and instructions on our website

See pages 168-170 for additional information that may apply to your order

**HARDWARE ONLY LEAD TIME: SHIPS SAME DAY WHEN ORDERED BEFORE 2 PM CST**

STANDARD LEAD TIME  
**3 DAYS**  
FROM PROOF APPROVAL



## Suggested Uses:

- Healthcare Lobbies
- New Product Demos
- Presentations
- Trade Shows

# SHOW 'N GO DISPLAYS

**1 YEAR**  
HARDWARE  
WARRANTY



A registration booth that easily transports from school to school to engage young people to participate in sports.



5' x 32" Display shown on a 6' Standard Table  
Throw with Thermal Imprint

## An all-in-one table top display and travel case.

Transforms from a rigid, plastic case to a tri-fold display in seconds. Graphics can remain attached to the panels for easy set up.

### Show 'N Go

Item #	Description	1	2-5	6-11	12-24
147032	4' x 18" Display Only	470.00	450.00	430.00	410.00
147033	4' x 24" Display Only	525.00	500.00	475.00	445.00
147034	4' x 32" Display Only	625.00	600.00	575.00	550.00
147039	5' x 24" Display Only	625.00	600.00	575.00	550.00
147040	5' x 32" Display Only	735.00	705.00	675.00	640.00

(C)

### Graphics Only

Item #	Description	1	2-5	6-11	12-24
190552	4' x 18" Panel Graphics Only Kit	99.00	78.00	69.00	62.00
190553	4' x 24" Panel Graphics Only Kit	112.00	90.00	77.00	70.00
190554	4' x 32" Panel Graphics Only Kit	123.00	100.00	86.00	77.00
190555	5' x 24" Panel Graphics Only Kit	132.00	106.00	94.00	86.00
190556	5' x 32" Panel Graphics Only Kit	159.00	139.00	124.00	115.00

Graphics Only Kits Include: (2) End Panels and (1) Center Panel

(C)

### Available Fabric Colors



Velcro® receptive fabric makes changing graphics quick and easy.



Carry Case  
included



## PRODUCT SPECIFICATIONS

Description	Product Size	End Panel Graphic Size	Center Panel Graphic Size	Product Wt.	Graphic Media
4' x 18" Show 'N Go	47.625"W x 24"H x 11.5"D	10.5"W x 16.5"H	22.5"W x 16.5"H	7 lbs.	Laminated No Curl
4' x 24" Show 'N Go	47.625"W x 30"H x 11.5"D	10.5"W x 22.5"H	22.5"W x 22.5"H	8.75 lbs.	Laminated No Curl
4' x 32" Show 'N Go	47.625"W x 38"H x 11.5"D	10.5"W x 30.5"H	22.5"W x 30.5"H	11.25 lbs.	Laminated No Curl
5' x 24" Show 'N Go	63.125"W x 32.75"H x 15"D	14.5"W x 22.5"H	30.5"W x 22.5"H	11.75 lbs.	Laminated No Curl
5' x 32" Show 'N Go	63.125"W x 40.25"H x 15"D	14.5"W x 30.5"H	30.5"W x 30.5"H	15 lbs.	Laminated No Curl

Imprint set-up fee: \$40.00(G)

View current graphic templates, assembly videos and instructions on our website

See pages 168-170 for additional information that may apply to your order

**HARDWARE ONLY LEAD TIME: SHIPS SAME DAY WHEN ORDERED BEFORE 2 PM CST**

STANDARD LEAD TIME  
**3 DAYS**  
FROM PROOF APPROVAL

# MINI RETRACTORS & BANNER DISPLAYS

Suggested Uses:

- Table Tops
- Concession Stands
- Point-of-Purchase
- Bank Counters

6 MO.  
HARDWARE  
WARRANTY

Even the smallest messages can be professionally displayed. These lightweight, portable displays fit anywhere and are perfect for countertops.



## Mini "X" Banner Display

Item #	Description	1	2-5	6-11	12-24
210032	Kit	26.50	25.20	24.40	23.30
210031	Hardware Only	10.00	9.50	9.00	8.50
Kit Includes: Hardware, Graphic and Draw String Pouch (C)					

## Deluxe Mini Retractor

Item #	Description	1	2-5	6-11	12-24
262014	Kit	53.00	51.00	50.00	49.00
260011	Hardware Only	35.00	34.00	33.00	32.00
Kit Includes: Hardware and Installed Graphic (C)					

## Mini Promo Retractors

Item #	Description	1	2-5	6-11	12-24
210240	Small Kit	41.00	39.00	37.50	36.00
210241	Small Hardware Only	23.50	22.50	21.50	20.50
210242	Large Kit	46.00	43.50	42.50	40.50
210243	Large Hardware Only	26.50	25.00	24.50	23.50
Kit Includes: Hardware and Installed Graphic (C)					

# ECONOMY TABLE TOP RETRACTOR

75  
RCAT  
RATING

1 YEAR  
HARDWARE  
WARRANTY

VIDEO

GRAPHIC  
ONLY OPTIONS  
AVAILABLE  
ONLINE

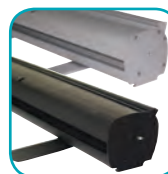
BEST  
SELLER



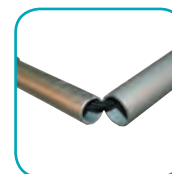
**A table top version of our best selling Economy Retractor!**  
The durable, lightweight base is perfect for traveling. Its compact size is ideal for smaller areas.

## Economy Table Top Retractor

Item #	Description	1	2-5	6-11	12-24
261130	Laminated No Curl Graphic Kit	155.00	145.00	135.00	125.00
262160	No Curl Opaque Fabric Graphic Kit	155.00	145.00	135.00	125.00
261131	Hardware Only	69.00	65.00	61.00	57.00
Kit Includes: Hardware and Installed Graphic (C)					



Aluminum hardware is available in silver or black.



Shock cord pole easily connects for fast set up.



**Check out other versatile, telescoping retractors that are perfect for use as a table top displays.** Superb Telescoping Retractor (page 31), Excellent Telescoping Retractor (page 30) and Supreme Telescoping Retractor (page 33).

## PRODUCT SPECIFICATIONS

Description	Product Size	Finished Graphic Size	Product Wt.	Graphic Media
Mini "X" Banner Display	11.75"W x 18"H x 10.75"D	11"W x 17"H	.50 lbs.	Laminated No Curl
Deluxe Mini Retractor	9.375"W x 17.75"H x 4"D	8.25"W x 16"H	1.5 lbs.	Polypropylene Media
Small Mini Promo Retractor	9.625"W x 13.25"H x 3"D	8.25"W x 11.75"H	1 lb.	Polypropylene Media
Large Mini Promo Retractor	13.125"W x 17.875"H x 3"D	11.75"W x 16.5"H	1 lb.	Polypropylene Media
Economy Table Top Retractor	24.5"W x 39.25"H x 11"D	24"W x 35.5"H	5.25 lbs.	Laminated No Curl or No Curl Opaque Fabric

Imprint set-up fee: \$40.00(G)

View current graphic templates, assembly videos and instructions on our website

See pages 168-170 for additional information that may apply to your order

**HARDWARE ONLY LEAD TIME: SHIPS SAME DAY WHEN ORDERED BEFORE 2 PM CST**

STANDARD LEAD TIME  
**2DAYS**  
FROM PROOF APPROVAL

## Suggested Uses:

- Trade Shows
- Sign-Up Events
- Charity Booths
- Classrooms

# OVER THE TOP TABLE TOP DISPLAYS



Let the display represent your company, allowing you to engage with trade show attendees.



Frame converts from 74.5" to 98"W



6' Header Kit shown on 6' Table with 6' UltraFit Throw (table and throw not included)

Carry Case included

## Over The Top Header

Item #	Description	1	2-5	6-11	12-24
280320	6' Header Kit	345.00	335.00	325.00	315.00
280321	8' Header Kit	365.00	355.00	345.00	335.00

Kit Includes: Frame, Graphic and Carry Case

(C)

## Over The Top Short Back Wall

Item #	Description	1	2-5	6-11	12-24
280322	6' Short Back Wall Kit	375.00	365.00	355.00	345.00
280323	8' Short Back Wall Kit	400.00	390.00	380.00	370.00

Kit Includes: Frame, Graphic and Carry Case

(C)

## Over The Top Tall Back Wall

Item #	Description	1	2-5	6-11	12-24
280324	6' Tall Back Wall Kit	400.00	390.00	380.00	370.00
280325	8' Tall Back Wall Kit	420.00	410.00	400.00	390.00

Kit Includes: Frame, Graphic and Carry Case

(C)

## Over The Top Hardware

Item #	Description	1	2-5	6-11	12-24
280330	Frame w/Carry Case	280.00	275.00	270.00	265.00
280331	(2) Floor Bases	82.00	77.00	72.00	67.00

(C)



The easy-to-use clamp system attaches to any table without the use of tools.



Use as a freestanding display with optional Floor Bases.

## KIT OPTIONS

Shown with Table and UltraFit Throw (not included)



Header Kit



Short Wall Kit



Tall Wall Kit

## PRODUCT SPECIFICATIONS

Description	Product Size	Finished Graphic Size	Product Wt.	Graphic Media
6' Header	74.5"W x 44" or 68.25"H x 2.875"D	71"W x 18"H (View Online Template)	9.75 lbs.	Two-Way Stretch Fabric
8' Header	98"W x 44" or 68.25"H x 2.875"D	97.5"W x 18"H (View Online Template)	10 lbs.	Two-Way Stretch Fabric
6' Short Back Wall	74.5"W x 44"H x 2.875"D	71"W x 43"H (View Online Template)	11 lbs.	Two-Way Stretch Fabric
8' Short Back Wall	98"W x 44"H x 2.875"D	95"W x 43"H (View Online Template)	11.75 lbs.	Two-Way Stretch Fabric
6' Tall Back Wall	74.5"W x 68.25"H x 2.875"D	71"W x 68.5"H (View Online Template)	12 lbs.	Two-Way Stretch Fabric
8' Tall Back Wall	98"W x 68.25"H x 2.875"D	95"W x 68.5"H (View Online Template)	13.25 lbs.	Two-Way Stretch Fabric

Imprint set-up fee: \$40.00(G)

View current graphic templates, assembly videos and instructions on our website

See pages 168-170 for additional information that may apply to your order

**HARDWARE ONLY OPTIONS AVAILABLE ONLINE**

STANDARD LEAD TIME  
**4 DAYS**  
FROM PROOF APPROVAL



# SHOW 'N RISE POP-UP DISPLAYS

## Suggested Uses:

- Trade Shows
- Promo Events
- Non-profit Booths
- Presentations

2 YEAR  
HARDWARE  
WARRANTY

VIDEO



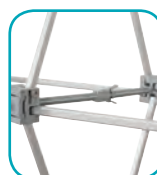
Full Mural Kit  
shown on an  
8' Standard  
Throw with  
Thermal Imprint

**The perfect table top pop-up display for anyone who is budget-conscious.** Choose from Velcro® receptive fabric or laminated, full-color graphic mural panels to create a vibrant backdrop for any presentation. Floor display kits are available; see page 137.

**BEST SELLER**  
**MORE OPTIONS**  
Available Online

## 6' Curved Table Top Display

Item #	Description	Price
339001	Full Fabric Kit	816.00
339002	Mural w/Fabric Ends Kit	969.00
339003	Full Mural Kit	1225.00
Kit Includes: See page 137 for Kit Options		(C)



High grade aluminum frame with bayonet locking system ensures a stable display.



Shock cord magnet rails make for easy panel registration.

# ARISE POP-UP DISPLAYS

LIFE  
HARDWARE  
WARRANTY

VIDEO

**MORE OPTIONS**  
Available Online

## Suggested Uses:

- Product Demos
- Education
- Promo Events
- Recruiting



6' Full Mural Kit  
shown on an  
8' Standard  
Throw with  
Thermal Imprint

**A table top pop-up display specifically engineered for the frequent trade show professional.** Choose from laminated, full-color graphic mural panels or Velcro® receptive fabric to create a lively display for any trade show. Floor display kits are available; see page 139.

## 6' Curved Table Top Displays

Item #	Description	Price
332220	Full Fabric Kit	918.00
332244	Mural w/Fabric Ends Kit	1070.00
332252	Full Mural Kit	1375.00
Kit Includes: See page 139 for Kit Options		(C)

## 8' Curved Table Top Displays

Item #	Description	Price
332221	Full Fabric Kit	1070.00
332245	Mural w/Fabric Ends Kit	1375.00
332253	Full Mural Kit	1685.00
Kit Includes: See page 139 for Kit Options		(C)



Self-locking, high grade aluminum frame pops up in seconds.



Magnet bars connect to the frame for easy panel registration.

## PRODUCT SPECIFICATIONS

Description	Product Size	Finished Graphic Size	Product Wt.	Graphic Media
6' Show 'N Rise Display	75"W x 61"H x 17"D	View Online Template	57.25 lbs.	Laminated No Curl
6' ARISE Display	72"W x 62"H x 22"D	View Online Template	52 lbs.	Laminated No Curl
8' ARISE Display	94"W x 62"H x 28"D	View Online Template	62 lbs.	Laminated No Curl
Imprint set-up fee: \$40.00(G)				
View current graphic templates, assembly videos and instructions on our website				
See pages 168-170 for additional information that may apply to your order				
HARDWARE ONLY OPTIONS AVAILABLE ONLINE				
FABRIC ONLY DISPLAY LEAD TIME: SHIPS IN 2 DAYS				

STANDARD LEAD TIME  
**3DAYS**  
FROM PROOF APPROVAL

# MICRO GEOMETRIX DISPLAYS



Change your message frequently with ease.



Kit 337211 shown on a 6' Standard Table Throw and 57" Accent Runner with Full-Color Dye Sublimation

Carry Case included  
(Color may vary)



## Micro GeoMetrix Kit 337211

Item #	Description	Price
337211	Kit	455.00
	Kit Includes: 12-quad Horizontal Frame, (8) Graphic Banners and Carry Case	(C)



## Micro GeoMetrix Kit 337205

Item #	Description	Price
337205	Kit	315.00
	Kit Includes: 6-quad Horizontal Frame, (6) Graphic Banners and Carry Case	(C)



## Micro GeoMetrix Kit 337207

Item #	Description	Price
337207	Kit	365.00
	Kit Includes: 9-quad Square Frame, (5) Graphic Banners and Carry Case	(C)



## Micro GeoMetrix Kit 337201

Item #	Description	Price
337201	Kit	168.00
	Kit Includes: 3-quad Vertical Frame, (3) Graphic Banners and Carry Case	(C)



Reinforced graphic corners prevent tearing.



Washable, wrinkle-resistant fabric keeps your graphics looking clean.

## OPTIONAL ADD-ON



Accent Table Runner  
Item # 103022  
See Page 18

## PRODUCT SPECIFICATIONS

Description	Product Size	Finished Graphic Size	Product Wt.	Graphic Media
Micro GeoMetrix 337211	56.5"W x 42.25"H x 10.75"D	View Online Template	12.5 lbs.	Polyester Double Knit Fabric
Micro GeoMetrix 337207	43"W x 42.75"H x 10.75"D	View Online Template	9.25 lbs.	Polyester Double Knit Fabric
Micro GeoMetrix 337205	42.5"W x 29"H x 11"D	View Online Template	6.5 lbs.	Polyester Double Knit Fabric
Micro GeoMetrix 337201	15.75"W x 43.25"H x 10"D	View Online Template	4 lbs.	Polyester Double Knit Fabric

Imprint set-up fee: \$40.00(G)

View current graphic templates, assembly videos and instructions on our website

See pages 168-170 for additional information that may apply to your order

**HARDWARE ONLY OPTIONS AVAILABLE ONLINE**

STANDARD LEAD TIME  
**4 DAYS**  
FROM PROOF APPROVAL



# SPLASH FABRIC DISPLAYS

2 YEAR  
HARDWARE  
WARRANTY

VIDEO

WASH



6' Straight with Face Graphic Kit shown on an 8' Standard Table Throw with Thermal Imprint

BEST  
SELLER

GRAPHIC  
ONLY OPTIONS  
AVAILABLE  
ONLINE

EASY  
SET-UP

## Suggested Uses:

- Job Fairs
- Sales Meetings
- Orientations
- Trade Shows

**Easily assembles from a compact unit to an impressive table top display in just a few minutes.** Four times lighter than your traditional pop-up, this aluminum frame is easy to travel with. Simple graphic installation using Velcro® receptive hubs. The high-resolution graphic is printed on wrinkle-resistant polyester knit fabric for a smooth appearance. Floor display kits are available; see page 115.

### Splash Straight Table Top Displays

Item #	Description	Price
341000	6' Straight w/Face Graphic Kit	683.00
341001	6' Straight w/Wrap Graphic Kit	840.00
Kit Includes: See page 115 for Kit Options		(C)

### Splash Curved Table Top Displays

Item #	Description	Price
341012	6' Curved w/Face Graphic Kit	685.00
341013	6' Curved w/Wrap Graphic Kit	840.00
Kit Includes: See page 115 for Kit Options		(C)

# EUROFIT FABRIC DISPLAYS

1 YEAR  
HARDWARE  
WARRANTY

VIDEO

WASH



8' Kit shown on an 8' Standard Throw with Thermal Imprint

GRAPHIC  
ONLY OPTIONS  
AVAILABLE  
ONLINE

**Stretch fabric fits smoothly over the freestanding frame creating an upscale display.** Portable and lightweight tubular frame weighs 75% less than a standard pop-up and is compact when disassembled. The dye sublimated, graphic completes the display with elegance. Floor display kits are available; see page 119.

### EuroFit Bow Table Top Displays

Item #	Description	Price
255000	6' Bow Kit	735.00
255003	8' Bow Kit	945.00
Kit Includes: Frame, Graphic and Carry Case		(C)

Carry Case included



Heavy-duty zipper secures graphic tightly keeping it wrinkle-free.



Shock cord poles easily connect together for quick assembly.

## PRODUCT SPECIFICATIONS

Description	Product Size	Finished Graphic Size	Product Wt. (Face / End Wrap)	Graphic Media
6' Splash Straight	61"W x 61"H x 14"D	View Online Template	10.5 lbs. / 11 lbs.	Polyester Knit Fabric
6' Splash Curved	66"W x 61"H x 18"D	View Online Template	10.5 lbs. / 11 lbs.	Polyester Knit Fabric
6' EuroFit Display	66"W x 61"H x 18"D	View Online Template	11 lbs.	Two-Way Stretch Fabric
8' EuroFit Display	84"W x 61"H x 18"D	View Online Template	13 lbs.	Two-Way Stretch Fabric

Imprint set-up fee: \$40.00(G)

View current graphic templates, assembly videos and instructions on our website

See pages 168-170 for additional information that may apply to your order

**HARDWARE ONLY OPTIONS AVAILABLE ONLINE**

STANDARD LEAD TIME  
**4 DAYS**  
FROM PROOF APPROVAL