

# RETRACTORS

## America's Finest Retractors - extremely portable and easy-to-set-up displays!

- Offered in a variety of styles and sizes for indoor and outdoor use
- One and two-sided displays available
- RCAT certified for a guaranteed minimum number of retractions



### Economy Retractors

This classic double-footed display is our most popular retractor; quick and easy set up for personal traveling shows or as an add-on for larger exhibits. See Page 22

### Stratus Retractors

A cost-effective display with a footless design. Solid, lightweight construction makes this retractor a reliable option for multiple events. New sizes and materials available to accommodate any event! See Page 26



## Suggested Product Uses

- Trade Shows
- Meetings
- Media Events
- Store Promotions
- Concession Stands
- Bank Counters
- Press Conferences
- Car Dealerships
- Airports
- Medical Clinics
- Hotel Lobbies
- Parking Lots



To guarantee our customers superior quality retractors, we have developed the Retractor Calibration Assessment Test. This one of a kind assessment, rigorously tests all components in our retractable banner displays.



Each of our retractors are tested and certified to a minimum number of retractions to help you find the right product for your needs.

Having confidence in America's finest retractors has never been easier with the RCAT Certification.



Mammoth Retractor  
Page 37



Supreme Retractor  
Page 34



Four Season Trek Lite Retractor  
Page 39



Deluxe Telescoping Retractor  
Page 28

# AMERICA'S FINEST RETRACTORS

## How To Choose Which One Is Right For You

### Will It Be Used Outdoors?

If your message needs to be displayed outdoors, select a retractor with a check under Outdoor Use

### Will The Message Change?

If your message changes frequently, select a retractor with a check under Changeable Graphic

### How Frequently Will It Be Used?

For higher frequency use, you will want to select a retractor with a higher RCAT rating combined with a longer hardware warranty

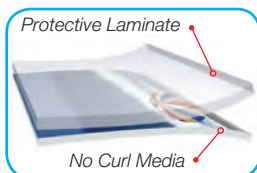
## RETRACTOR COMPARISON CHART

|                       | PAGE | VIEWABLE GRAPHIC                                   | OUTDOOR USE | CHANGEABLE GRAPHIC | 2-SIDED | GRAPHIC MATERIAL                           | RCAT CERTIFIED<br><small>(Retroreflective Certified Underwriters Bureau Inc.)</small> | HARDWARE WARRANTY |
|-----------------------|------|----------------------------------------------------|-------------|--------------------|---------|--------------------------------------------|---------------------------------------------------------------------------------------|-------------------|
| 24" Economy           | 23   | 24"W x 78.5"H                                      |             |                    |         | Laminated No Curl<br>No Curl Opaque Fabric | 75                                                                                    | 6 Months          |
| 31.5" Economy         | 23   | 31.5"W x 78.5"H                                    |             |                    |         |                                            | 75                                                                                    | 6 Months          |
| 33.5" Economy         | 23   | 33.5"W x 78.5"H                                    |             |                    |         |                                            | 75                                                                                    | 6 Months          |
| 36" Economy           | 23   | 36"W x 78.5"H                                      |             |                    |         |                                            | 75                                                                                    | 6 Months          |
| 48" Economy           | 23   | 47.25"W x 78.5"H                                   |             |                    |         |                                            | 75                                                                                    | 6 Months          |
| Economy Table Top     | 24   | 24"W x 35.5"H                                      |             |                    |         |                                            | 100                                                                                   | 1 Year            |
| 31.5" Economy Plus    | 25   | 31.5"W x 78.5"H                                    |             |                    |         | Laminated No Curl<br>No Curl Opaque Fabric | 100                                                                                   | 1 Year            |
| 33.5" Economy Plus    | 25   | 33.5"W x 78.5"H                                    |             |                    |         |                                            | 100                                                                                   | 1 Year            |
| 31.5" Sirius          | 25   | 31.5"W x 78.25"H                                   |             |                    |         | Polypropylene Media                        | 25                                                                                    | 2 Months          |
| 33" Sirius            | 25   | 33"W x 78.25"H                                     |             |                    |         |                                            | 25                                                                                    | 2 Months          |
| 24" Stratus           | 26   | 24"W x 78.5"H                                      |             |                    |         | Laminated No Curl<br>No Curl Opaque Fabric | 200                                                                                   | 2 Years           |
| 31.5" Stratus         | 26   | 31.5"W x 78.5"H                                    |             |                    |         |                                            | 200                                                                                   | 2 Years           |
| 33.5" Stratus         | 26   | 33.5"W x 78.5"H                                    |             |                    |         |                                            | 200                                                                                   | 2 Years           |
| 36" Stratus           | 26   | 36"W x 78.5"H                                      |             |                    |         |                                            | 200                                                                                   | 2 Years           |
| 48" Stratus           | 26   | 48"W x 78.5"H                                      |             |                    |         |                                            | 200                                                                                   | 2 Years           |
| Standard              | 27   | 31.5"W x 62.5"-79"H                                |             | ✓                  |         | Laminated No Curl                          | 125                                                                                   | 2 Years           |
| 33.5" Deluxe          | 28   | 33.5"W x 61.5"-79.5"H                              |             |                    | ✓       | Laminated No Curl                          | 200                                                                                   | 1 Year            |
| 46.5" Deluxe          | 28   | 46.5"W x 61.5"-79.5"H                              |             |                    | ✓       |                                            | 200                                                                                   | 1 Year            |
| 24" Optimum           | 29   | 23.75"W x 78.75"H                                  |             |                    | ✓       | No Curl Opaque Fabric                      | 1000                                                                                  | Lifetime          |
| 31.5" Optimum         | 29   | 31.5"W x 78.75"H                                   |             |                    | ✓       |                                            | 1000                                                                                  | Lifetime          |
| 40" Optimum           | 29   | 40"W x 78.75"H                                     |             |                    | ✓       |                                            | 1000                                                                                  | Lifetime          |
| Viewpoint             | 30   | 33.25"W x 33.25"-78.75"H                           |             |                    |         | Laminated No Curl<br>No Curl Opaque Fabric | 700                                                                                   | Lifetime          |
| Excellent             | 30   | 33.5"W x 30"-78.5"H                                |             |                    |         | No Curl Opaque Fabric                      | 300                                                                                   | 1 Year            |
| Superb                | 31   | 33.5"W x 34.5"-78"H                                |             | ✓                  |         | Laminated No Curl                          | 800                                                                                   | Lifetime          |
| XChange Retractor     | 32   | 33"W x 62.625"-79"H                                |             | ✓                  |         | Laminated No Curl                          | 800                                                                                   | 3 Year            |
| Supreme               | 33   | 33"W x 36"-86"H                                    |             | ✓                  |         | Laminated No Curl<br>No Curl Opaque Fabric | 800                                                                                   | Lifetime          |
| 31" Change Agent      | 34   | 31"W x 69"-80"H                                    |             | ✓                  |         | No Curl Opaque Fabric                      | 300                                                                                   | 1 Year            |
| 33" Change Agent      | 34   | 33"W x 69"-80"H                                    |             | ✓                  |         |                                            | 300                                                                                   | 1 Year            |
| 36" Change Agent      | 34   | 36"W x 69"-80"H                                    |             | ✓                  |         |                                            | 300                                                                                   | 1 Year            |
| Jumbo Tall            | 35   | 47"W x 116.5"H                                     |             |                    |         | Laminated No Curl<br>No Curl Opaque Fabric | 100                                                                                   | 1 Year            |
| 5' Jumbo Wide         | 36   | 59.75"W x 78.75"H                                  |             |                    |         | No Curl Fabric<br>13 oz Smooth Vinyl       | 100                                                                                   | 1 Year            |
| 6' Jumbo Wide         | 36   | 71.75"W x 78.75"H                                  |             |                    |         |                                            | 100                                                                                   | 1 Year            |
| 8' Jumbo Wide         | 36   | 94.75"W x 78.75"H                                  |             |                    |         |                                            | 100                                                                                   | 1 Year            |
| Mammoth               | 37   | 78.5"W x 64.875", 79.625", 87.375", 99.125", 119"H |             |                    |         | No Curl Fabric<br>13 oz Smooth Vinyl       | 250                                                                                   | 1 Year            |
| Four Season Ballast   | 38   | 31.5"W x 43.25", 62", 71", 78.75"H                 | ✓           | ✓                  | ✓       | 13 oz Vinyl                                | 150                                                                                   | 1 Year            |
| Four Season Trek      | 39   | 33.25"W x 77.25"H                                  | ✓           |                    | ✓       | 13 oz Vinyl                                | 300                                                                                   | 1 Year            |
| Four Season Trek Lite | 39   | 33.25"W x 77.25"H                                  | ✓           |                    | ✓       | 13 oz Vinyl                                | 250                                                                                   | 1 Year            |
| Four Season           | 40   | 31.5"W x 53.75"-78.75"H                            | ✓           |                    |         | 13 oz Vinyl                                | 150                                                                                   | 1 Year            |

## RETRACTOR GRAPHIC MATERIAL

### Laminated No Curl

A graphic that won't curl on the edges. The 3 mil lamination protects your graphic from scratching and fraying.



### No Curl Fabric

A lightweight, no-glare graphic with vivid colors that won't fray or curl.



### No Curl Opaque Fabric

A high quality, fabric graphic with high-impact colors that will not curl. The back of the material has a silver coating making it opaque.



### 13 oz Vinyl

Durable vinyl repels water and can be easily cleaned for continued outdoor use.





# ECONOMY RETRACTORS

**75**  
RCAT  
RATING

**6** MO.  
HARDWARE  
WARRANTY

**VIDEO**
**Suggested Uses:**

- Trade Shows
- Store Promotions
- Meetings
- School Functions

**This classic base is durable, yet lightweight, for hassle-free transportation.** The fold out feet ensure your retractor will stand up straight every time. With many sizes to choose from, you are sure to find the perfect fit for all your needs.



36" Economy Retractor



33.5" Economy Retractor



**BEST SELLER**  
**GRAPHIC ONLY OPTIONS AVAILABLE ONLINE**



Carry Case included



You can greet guests with company information.



Use the retractor to provide people with preventative tips.



It is a great way to show off your message in hallways and lobbies.



48" Economy Retractor



36" Economy Retractor



33.5" Economy Retractor



31.5" Economy Retractor



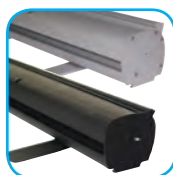
24" Economy Retractor

## Economy Retractors

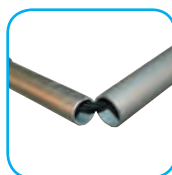
| Item # | Description                             | 1      | 2-5    | 6-11   | 12-24  |
|--------|-----------------------------------------|--------|--------|--------|--------|
| 261132 | 24" Laminated No Curl Graphic Kit       | 215.00 | 200.00 | 185.00 | 170.00 |
| 262161 | 24" No Curl Opaque Fabric Graphic Kit   | 215.00 | 200.00 | 185.00 | 170.00 |
| 261133 | 24" Hardware Only                       | 83.00  | 74.00  | 66.00  | 61.00  |
| 261134 | 31.5" Laminated No Curl Graphic Kit     | 245.00 | 230.00 | 215.00 | 200.00 |
| 262162 | 31.5" No Curl Opaque Fabric Graphic Kit | 245.00 | 230.00 | 215.00 | 200.00 |
| 261135 | 31.5" Hardware Only                     | 89.00  | 85.00  | 81.00  | 77.00  |
| 261136 | 33.5" Laminated No Curl Graphic Kit     | 265.00 | 250.00 | 235.00 | 220.00 |
| 262163 | 33.5" No Curl Opaque Fabric Graphic Kit | 265.00 | 250.00 | 235.00 | 220.00 |
| 261137 | 33.5" Hardware Only                     | 105.00 | 101.00 | 92.00  | 88.00  |
| 261138 | 36" Laminated No Curl Graphic Kit       | 295.00 | 280.00 | 265.00 | 250.00 |
| 262164 | 36" No Curl Opaque Fabric Graphic Kit   | 295.00 | 280.00 | 265.00 | 250.00 |
| 261139 | 36" Hardware Only                       | 120.00 | 112.00 | 103.00 | 99.00  |
| 261140 | 48" Laminated No Curl Graphic Kit       | 340.00 | 320.00 | 300.00 | 280.00 |
| 262165 | 48" No Curl Opaque Fabric Graphic Kit   | 340.00 | 320.00 | 300.00 | 280.00 |
| 261141 | 48" Hardware Only                       | 144.00 | 136.00 | 132.00 | 124.00 |

Kit Includes: Hardware, Installed Graphic and Carry Case

(C)



Aluminum hardware is available in silver or black (24" available in black only).



Shock cord pole easily connects for fast set up.

## OPTIONAL ADD-ONS



Ultimate LED Single Light Kit


Hard Plastic Carrying Case  
Holds Economy Retractors up to 36" wide

## Economy Retractor Accessories

| Item # | Description                   | 1      |
|--------|-------------------------------|--------|
| 150120 | Ultimate LED Single Light Kit | 125.00 |
| 220129 | Hard Plastic Carrying Case    | 60.00  |

(C)

## PRODUCT SPECIFICATIONS

| Description             | Product Size          | Finished Graphic Size | Product Wt. | Graphic Media                              |
|-------------------------|-----------------------|-----------------------|-------------|--------------------------------------------|
| 24" Economy Retractor   | 24.5"W x 84"H x 11"D  | 24"W x 78.5"H         | 6 lbs.      | Laminated No Curl or No Curl Opaque Fabric |
| 31.5" Economy Retractor | 32"W x 84"H x 15"D    | 31.5"W x 78.5"H       | 7 lbs.      | Laminated No Curl or No Curl Opaque Fabric |
| 33.5" Economy Retractor | 34.5"W x 84"H x 15"D  | 33.5"W x 78.5"H       | 7.25 lbs.   | Laminated No Curl or No Curl Opaque Fabric |
| 36" Economy Retractor   | 37"W x 84"H x 15"D    | 36"W x 78.5"H         | 7.5 lbs.    | Laminated No Curl or No Curl Opaque Fabric |
| 48" Economy Retractor   | 48.75"W x 84"H x 15"D | 47.25"W x 78.5"H      | 10.25 lbs.  | Laminated No Curl or No Curl Opaque Fabric |

Imprint set-up fee: \$40.00(G)

Installation: Banner attaches with snap rail on top and banner tape on bottom

View current graphic templates, assembly videos and instructions on our website

See pages 168-170 for additional information that may apply to your order

HARDWARE ONLY LEAD TIME: SHIPS SAME DAY WHEN ORDERED BEFORE 2 PM CST

STANDARD LEAD TIME  
**2DAYS**  
FROM PROOF APPROVAL

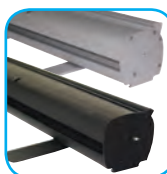
# ECONOMY TABLE TOP RETRACTOR

**100**  
RCAT  
RATING

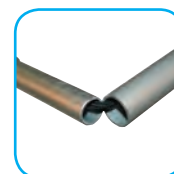
**1**  
YEAR  
HARDWARE  
WARRANTY

**VIDEO**
**BEST  
SELLER**  
  
**GRAPHIC  
ONLY OPTIONS  
AVAILABLE  
ONLINE**


Carry Case  
included



Aluminum hardware  
available in  
silver or black.



Shock cord pole  
easily connects  
for fast set up.

## Suggested Uses:

- Table Tops
- Concession Stands
- POP Displays
- Bank Counters

## A table top version of our best selling

**Economy Retractor!** The durable, lightweight base is perfect for traveling. Its size makes it ideal for smaller areas, while still achieving the same visual impact as the larger styles.

### Economy Table Top Retractor

| Item # | Description                       | 1      | 2-5    | 6-11   | 12-24  |
|--------|-----------------------------------|--------|--------|--------|--------|
| 261130 | Laminated No Curl Graphic Kit     | 155.00 | 145.00 | 135.00 | 125.00 |
| 262160 | No Curl Opaque Fabric Graphic Kit | 155.00 | 145.00 | 135.00 | 125.00 |
| 261131 | Hardware Only                     | 69.00  | 65.00  | 61.00  | 57.00  |

Kit Includes: Hardware and Installed Graphic

(C)

# MINI RETRACTORS

**6**  
MO.  
HARDWARE  
WARRANTY

**VIDEO**


Deluxe Mini  
Retractor

Small Mini  
Pro Retractor

Large Mini  
Pro Retractor

## Suggested Uses:

- Trade Shows
- POP Displays
- Table Tops
- Meetings

## Professionally display even the smallest

**messages.** These lightweight, portable displays fit anywhere and are perfect for point-of-purchase.

### Deluxe Mini Retractor

| Item # | Description   | 1     | 2-5   | 6-11  | 12-24 |
|--------|---------------|-------|-------|-------|-------|
| 262014 | Kit           | 53.00 | 51.00 | 50.00 | 49.00 |
| 260011 | Hardware Only | 35.00 | 34.00 | 33.00 | 32.00 |

Kit Includes: Hardware and Installed Graphic

(C)

### Mini Promo Retractors

| Item # | Description         | 1     | 2-5   | 6-11  | 12-24 |
|--------|---------------------|-------|-------|-------|-------|
| 210240 | Small Kit           | 41.00 | 39.00 | 37.50 | 36.00 |
| 210241 | Small Hardware Only | 23.50 | 22.50 | 21.50 | 20.50 |
| 210242 | Large Kit           | 46.00 | 43.50 | 42.50 | 40.50 |
| 210243 | Large Hardware Only | 26.50 | 25.00 | 24.50 | 23.50 |

Kit Includes: Hardware and Installed Graphic

(C)

## PRODUCT SPECIFICATIONS

| Description                 | Product Size              | Finished Graphic Size | Product Wt. | Graphic Media                              |
|-----------------------------|---------------------------|-----------------------|-------------|--------------------------------------------|
| Economy Table Top Retractor | 24.5"W x 39.25"H x 11"D   | 24"W x 35.5"H         | 5.25 lbs.   | Laminated No Curl or No Curl Opaque Fabric |
| Deluxe Mini Retractor       | 9.375"W x 17.75"H x 4"D   | 8.25"W x 16"H         | 1.5 lbs.    | Polypropylene Media                        |
| Small Mini Promo Retractor  | 9.625"W x 13.25"H x 3"D   | 8.25"W x 11.75"H      | 1 lb.       | Polypropylene Media                        |
| Large Mini Promo Retractor  | 13.125"W x 17.875"H x 3"D | 11.75"W x 16.5"H      | 1 lb.       | Polypropylene Media                        |

Imprint set-up fee: \$40.00(G)

Installation: Banner attaches with snap rail on top and banner tape on bottom

View current graphic templates, assembly videos and instructions on our website

See pages 168-170 for additional information that may apply to your order

**HARDWARE ONLY LEAD TIME: SHIPS SAME DAY WHEN ORDERED BEFORE 2 PM CST**

STANDARD LEAD TIME  
**2DAYS**  
FROM PROOF APPROVAL



## Suggested Uses:

- Restaurants
- Trade Shows
- Entryways
- Doctor's Offices



# ECONOMY PLUS RETRACTORS

**100**  
RCAT  
RATING

**1**  
YEAR  
HARDWARE  
WARRANTY

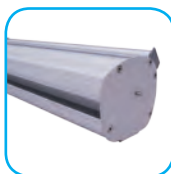


**Similar to our popular Economy Retractors but with increased durability to withstand more frequent use.** The strong base features a single foot and is made from heavy-duty aluminum for increased stability.

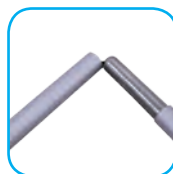
## Economy Plus Retractors

| Item # | Description                             | 1      | 2-5    | 6-11   | 12-24  |
|--------|-----------------------------------------|--------|--------|--------|--------|
| 261012 | 31.5" Laminated No Curl Graphic Kit     | 280.00 | 260.00 | 250.00 | 240.00 |
| 262180 | 31.5" No Curl Opaque Fabric Graphic Kit | 280.00 | 260.00 | 250.00 | 240.00 |
| 261013 | 31.5" Hardware Only                     | 132.00 | 124.00 | 116.00 | 111.00 |
| 261002 | 33.5" Laminated No Curl Graphic Kit     | 300.00 | 280.00 | 270.00 | 260.00 |
| 262181 | 33.5" No Curl Opaque Fabric Graphic Kit | 300.00 | 280.00 | 270.00 | 260.00 |
| 261001 | 33.5" Hardware Only                     | 144.00 | 136.00 | 127.00 | 119.00 |

Kit Includes: Hardware, Installed Graphic and Carry Case (C)



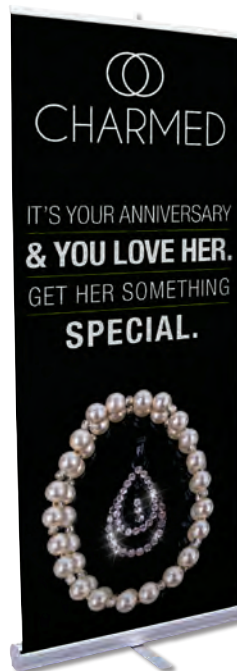
Hardware is available in silver.



3-section shock cord pole easily connects for fast set up.



Carry Case included



31.5" Economy Plus Retractor



33.5" Economy Plus Retractor

RETRACTORS

# SIRIUS RETRACTORS

**25**  
RCAT  
RATING

**2**  
MO.  
HARDWARE  
WARRANTY



**Create a successful promotional campaign with this top-rated, budget-friendly display.** The double-footed design ensures stability. The full-color polypropylene graphic is economical while still giving your display a professional finish.

## Sirius Retractors

| Item # | Description         | 1      | 2-5    | 6-11   | 12-24  |
|--------|---------------------|--------|--------|--------|--------|
| 266109 | 31.5" Kit           | 125.00 | 115.00 | 105.00 | 95.00  |
| 266110 | 31.5" Hardware Only | 38.00  | 37.00  | 34.00  | 30.00  |
| 266105 | 33" Kit             | 135.00 | 125.00 | 115.00 | 105.00 |
| 266106 | 33" Hardware Only   | 40.00  | 38.00  | 35.00  | 32.00  |

Kit Includes: Hardware, Installed Graphic and Carry Case (C)



Lightweight, aluminum base features plastic ends.



3-section shock cord pole easily connects for fast set up.



Carry Case included



31.5" Sirius Retractor



33" Sirius Retractor

## PRODUCT SPECIFICATIONS

| Description                  | Product Size           | Finished Graphic Size | Product Wt. | Graphic Media                              |
|------------------------------|------------------------|-----------------------|-------------|--------------------------------------------|
| 31.5" Economy Plus Retractor | 32"W x 83"H x 15"D     | 31.5"W x 78.5"H       | 7 lbs.      | Laminated No Curl or No Curl Opaque Fabric |
| 33.5" Economy Plus Retractor | 33.5"W x 83"H x 15"D   | 33.5"W x 78.5"H       | 7.5 lbs.    | Laminated No Curl or No Curl Opaque Fabric |
| 31.5" Sirius Retractor       | 32.875"W x 82"H x 15"D | 31.5"W x 78.25"H      | 5 lbs.      | Polypropylene Media                        |
| 33" Sirius Retractor         | 35"W x 82"H x 15"D     | 33"W x 78.25"H        | 6 lbs.      | Polypropylene Media                        |

Imprint set-up fee: \$40.00(G)

Installation: Banner attaches with snap rail on top and banner tape on bottom

View current graphic templates, assembly videos and instructions on our website

See pages 168-170 for additional information that may apply to your order

**HARDWARE ONLY LEAD TIME: SHIPS SAME DAY WHEN ORDERED BEFORE 2 PM CST**

STANDARD LEAD TIME  
**2DAYS**  
FROM PROOF APPROVAL

Call: 866 971-1008 Email: [bciwideformat@gmail.com](mailto:bciwideformat@gmail.com) Online: [www.bciimage.com](http://www.bciimage.com)

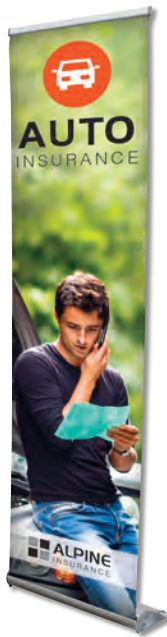
# STRATUS RETRACTOR

**200**  
RCAT  
RATING

**2** YEAR  
HARDWARE  
WARRANTY

**VIDEO**


33.5" Stratus Retractor



24" Stratus Retractor



31.5" Stratus Retractor



36" Stratus Retractor



48" Stratus Retractor



Carry Case included


**GRAPHIC**  
ONLY OPTIONS  
AVAILABLE  
ONLINE

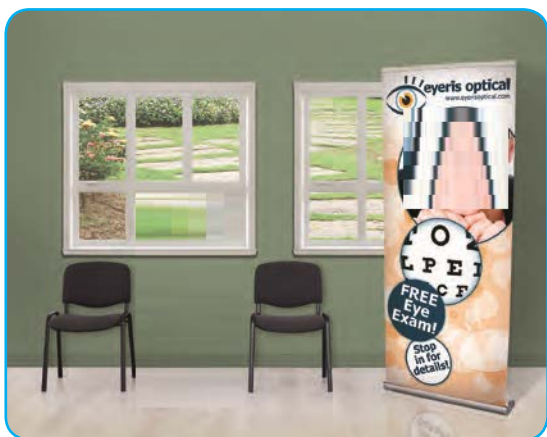
**This unique footless design gives you an affordable, upscale look.** Solid, lightweight construction makes the Stratus a reliable option for multiple events.

## Stratus Retractors

| Item # | Description                             | 1      | 2-5    | 6-11   | 12-24  |
|--------|-----------------------------------------|--------|--------|--------|--------|
| 262070 | 24" Laminated No Curl Graphic Kit       | 235.00 | 221.00 | 209.00 | 195.00 |
| 262150 | 24" No Curl Opaque Fabric Graphic Kit   | 235.00 | 221.00 | 209.00 | 195.00 |
| 262071 | 24" Hardware Only                       | 115.00 | 108.00 | 102.00 | 95.00  |
| 262072 | 31.5" Laminated No Curl Graphic Kit     | 280.00 | 263.00 | 249.00 | 232.00 |
| 262151 | 31.5" No Curl Opaque Fabric Graphic Kit | 280.00 | 263.00 | 249.00 | 232.00 |
| 262073 | 31.5" Hardware Only                     | 130.00 | 122.00 | 116.00 | 108.00 |
| 262074 | 33.5" Laminated No Curl Graphic Kit     | 295.00 | 275.00 | 265.00 | 255.00 |
| 262152 | 33.5" No Curl Opaque Fabric Graphic Kit | 295.00 | 275.00 | 265.00 | 255.00 |
| 262075 | 33.5" Hardware Only                     | 139.00 | 131.00 | 123.00 | 114.00 |
| 262076 | 36" Laminated No Curl Graphic Kit       | 340.00 | 320.00 | 303.00 | 282.00 |
| 262153 | 36" No Curl Opaque Fabric Graphic Kit   | 340.00 | 320.00 | 303.00 | 282.00 |
| 262077 | 36" Hardware Only                       | 170.00 | 160.00 | 151.00 | 141.00 |
| 262078 | 48" Laminated No Curl Graphic Kit       | 370.00 | 348.00 | 329.00 | 307.00 |
| 262154 | 48" No Curl Opaque Fabric Graphic Kit   | 370.00 | 348.00 | 329.00 | 307.00 |
| 262079 | 48" Hardware Only                       | 180.00 | 169.00 | 160.00 | 149.00 |

Kit Includes: Hardware, Installed Graphic and Carry Case

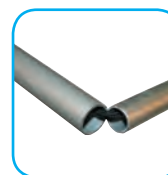
(C)



The footless design makes this an ideal display for tight spaces.



Aluminum base features chrome end caps and has a low center of gravity for a sturdy display.



3-section shock cord pole easily connects for fast set up.

## PRODUCT SPECIFICATIONS

| Description             | Product Size                 | Finished Graphic Size | Product Wt. | Graphic Media                              |
|-------------------------|------------------------------|-----------------------|-------------|--------------------------------------------|
| 24" Stratus Retractor   | 25.25"W x 81.625"H x 7.125"D | 24"W x 78.5"H         | 8.75 lbs.   | Laminated No Curl or No Curl Opaque Fabric |
| 31.5" Stratus Retractor | 33"W x 81.625"H x 7.125"D    | 31.5"W x 78.5"H       | 11.25 lbs.  | Laminated No Curl or No Curl Opaque Fabric |
| 33.5" Stratus Retractor | 34.25"W x 81.625"H x 7.125"D | 33.5"W x 78.5"H       | 12 lbs.     | Laminated No Curl or No Curl Opaque Fabric |
| 36" Stratus Retractor   | 37.25"W x 81.625"H x 7.125"D | 36"W x 78.5"H         | 12.5 lbs.   | Laminated No Curl or No Curl Opaque Fabric |
| 48" Stratus Retractor   | 49.5"W x 81.625"H x 7.125"D  | 48"W x 78.5"H         | 17.25 lbs.  | Laminated No Curl or No Curl Opaque Fabric |

Imprint set-up fee: \$40.00(G)

Installation: Banner attaches with snap rail on top and banner tape on bottom

View current graphic templates, assembly videos and instructions on our website

See pages 168-170 for additional information that may apply to your order

HARDWARE ONLY LEAD TIME: SHIPS SAME DAY WHEN ORDERED BEFORE 2 PM CST

STANDARD LEAD TIME  
**2DAYS**  
FROM PROOF APPROVAL



## Suggested Uses:

- Retail Promotions
- Lobbies
- Trade Shows
- Presentations

# STANDARD TELESCOPING RETRACTOR

**125**  
RCAT  
RATING

**2** YEAR  
HARDWARE  
WARRANTY

**VIDEO**



This retractor is a perfect solution for any retail environment.

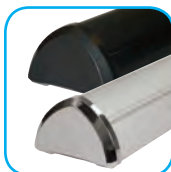
Featuring a classic design with graphic changeability and height adjustment - there's nothing "standard" about this retractor. The flip-open base provides easy access to switch out your graphic for different events. A single foot swivels out from the center ensuring a sturdy display every time.

## Standard Telescoping Retractor

| Item # | Description   | 1      | 2-5    | 6-11   | 12-24  |
|--------|---------------|--------|--------|--------|--------|
| 261110 | Kit           | 325.00 | 310.00 | 295.00 | 285.00 |
| 261111 | Hardware Only | 152.00 | 148.00 | 140.00 | 136.00 |
| 190383 | Graphic Only  | 173.00 | 167.00 | 161.00 | 154.00 |

Kit Includes: Hardware, Installed Graphic and Carry Case

(C)



Hardware available in black and silver.



Adjust the height of your display from 65" up to 82" with the flip-lever telescoping pole.



Carry Case included



Adjustable Graphic: 62.5" - 79" H

Standard Retractor

## OPTIONAL ADD-ON



Ultimate LED Single Light Kit  
Item # 150120  
See Page 148

## PRODUCT SPECIFICATIONS

| Description        | Product Size           | Finished Graphic Size | Product Wt. | Graphic Media     |
|--------------------|------------------------|-----------------------|-------------|-------------------|
| Standard Retractor | 34"W x 65"-82"H x 15"D | 31.5"W x 62.5"-79"H   | 8.5 lbs.    | Laminated No Curl |

Imprint set-up fee: \$40.00(G)  
 Installation: Banner attaches with snap rail on top and snap rail on bottom  
 View current graphic templates, assembly videos and instructions on our website  
 See pages 168-170 for additional information that may apply to your order  
**HARDWARE ONLY LEAD TIME: SHIPS SAME DAY WHEN ORDERED BEFORE 2 PM CST**

STANDARD LEAD TIME  
**2DAYS**  
FROM PROOF APPROVAL



# DELUXE TELESCOPING RETRACTORS

**200**  
RCAT  
RATING

**1** YEAR  
HARDWARE  
WARRANTY

**VIDEO**
**Suggested Uses:**

- Retail Stores
- Colleges
- Car Dealerships
- Airports

Adjustable Graphic: 61.5" - 79.5" H



46.5" Deluxe  
Single Retractor



33.5" Deluxe  
Double Retractor



Expand your advertising space in colleges, libraries or community centers.



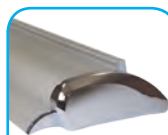
**Create an upscale look in high traffic areas with one or two adjustable height banners.** Durable aluminum construction with chrome end caps allows this retractor to stand up to frequent use.

**OPTIONAL ADD-ON**


Ultimate LED Single Light Kit  
Item # 150120  
See Page 148



Carry Case  
included



Streamlined base with winged back keeps the display sturdy.



2-section twist lock telescoping pole for fast set up.

**Deluxe Telescoping Retractors**

| Item # | Description                | 1      | 2-5    | 6-11   | 12-24  |
|--------|----------------------------|--------|--------|--------|--------|
| 262035 | 33.5" Single Kit           | 360.00 | 345.00 | 330.00 | 320.00 |
| 262036 | 33.5" Double Kit           | 490.00 | 470.00 | 450.00 | 435.00 |
| 262037 | 33.5" Single Hardware Only | 198.00 | 194.00 | 185.00 | 172.00 |
| 262201 | 33.5" Double Hardware Only | 240.00 | 230.00 | 210.00 | 200.00 |
| 262039 | 46.5" Single Kit           | 400.00 | 385.00 | 375.00 | 360.00 |
| 262040 | 46.5" Double Kit           | 575.00 | 555.00 | 530.00 | 505.00 |
| 262041 | 46.5" Single Hardware Only | 213.00 | 202.00 | 191.00 | 184.00 |
| 262042 | 46.5" Double Hardware Only | 260.00 | 250.00 | 235.00 | 215.00 |

Kit Includes: Hardware, Installed Graphic(s) and Carry Case

(C)

**PRODUCT SPECIFICATIONS**

| Description            | Product Size                | Finished Graphic Size | Product Wt. (Single / Double) | Graphic Media     |
|------------------------|-----------------------------|-----------------------|-------------------------------|-------------------|
| 33.5" Deluxe Retractor | 36"W x 65.75"-83"H x 11"D   | 33.5"W x 61.5"-79.5"H | 13 lbs. / 16 lbs.             | Laminated No Curl |
| 46.5" Deluxe Retractor | 48.5"W x 65.75"-83"H x 11"D | 46.5"W x 61.5"-79.5"H | 16.5 lbs. / 19 lbs.           | Laminated No Curl |

Imprint set-up fee: \$40.00(G)

Installation: Banner attaches with snap rail on top and banner tape on bottom  
View current graphic templates, assembly videos and instructions on our website  
See pages 168-170 for additional information that may apply to your order

**HARDWARE ONLY LEAD TIME: SHIPS SAME DAY WHEN ORDERED BEFORE 2 PM CST**

STANDARD LEAD TIME  
**2DAYS**  
FROM PROOF APPROVAL

## Suggested Uses:

- Business Entries
- Trade Shows
- Bank Lobbies
- Boutiques

# OPTIMUM RETRACTOR

**1000**  
RCAT  
RATING

**LIFE**  
HARDWARE  
WARRANTY

**VIDEO**



The Optimum retractor is perfect for lobbies or long-term installations.

**GRAPHIC  
ONLY OPTIONS  
AVAILABLE  
ONLINE**

**Built to last - this top of the line retractor is the #1 choice for frequent and long-term use.**

Constructed with a heavy-duty internal coil that allows you to retract your graphic again and again.



24" Optimum  
Double Retractor



40" Optimum  
Double Retractor



Carry Case included

## Optimum Retractors

| Item # | Description         | 1      | 2-5    | 6-11   | 12-24  |
|--------|---------------------|--------|--------|--------|--------|
| 262130 | 24" Single Kit      | 350.00 | 335.00 | 315.00 | 300.00 |
| 262131 | 24" Double Kit      | 479.00 | 460.00 | 442.00 | 423.00 |
| 262063 | 24" Hardware Only   | 221.00 | 213.00 | 196.00 | 188.00 |
| 262132 | 31.5" Single Kit    | 400.00 | 385.00 | 360.00 | 345.00 |
| 262133 | 31.5" Double Kit    | 541.00 | 523.00 | 500.00 | 477.00 |
| 262066 | 31.5" Hardware Only | 259.00 | 250.00 | 237.00 | 229.00 |
| 262134 | 40" Single Kit      | 500.00 | 480.00 | 465.00 | 445.00 |
| 262135 | 40" Double Kit      | 700.00 | 675.00 | 650.00 | 625.00 |
| 262069 | 40" Hardware Only   | 300.00 | 290.00 | 280.00 | 270.00 |

Kit Includes: Hardware, Installed Graphic(s) and Carry Case (C)



Solid, footless aluminum base can hold a graphic on each side for twice the ad space.



3-section shock cord pole makes assembly quick.

## OPTIONAL ADD-ON



Ultimate LED Single Light Kit  
Item # 150120  
See Page 148

## PRODUCT SPECIFICATIONS

| Description             | Product Size               | Finished Graphic Size | Product Wt. (Single / Double) | Graphic Media         |
|-------------------------|----------------------------|-----------------------|-------------------------------|-----------------------|
| 24" Optimum Retractor   | 25"W x 81.5"H x 6.875"D    | 23.75"W x 78.75"H     | 12.55 lbs. / 13.1 lbs.        | No Curl Opaque Fabric |
| 31.5" Optimum Retractor | 32.75"W x 81.5"H x 6.875"D | 31.5"W x 78.75"H      | 15.1 lbs. / 15.8 lbs.         | No Curl Opaque Fabric |
| 40" Optimum Retractor   | 41.25"W x 81.5"H x 6.875"D | 40"W x 78.75"H        | 18.1 lbs. / 19 lbs.           | No Curl Opaque Fabric |

Imprint set-up fee: \$40.00(G)

Installation: Banner attaches with snap rail on top and banner tape on bottom

View current graphic templates, assembly videos and instructions on our website

See pages 168-170 for additional information that may apply to your order

**HARDWARE ONLY LEAD TIME: SHIPS SAME DAY WHEN ORDERED BEFORE 2 PM CST**

**STANDARD LEAD TIME**  
**2DAYS**  
FROM PROOF APPROVAL

Call: 866 971-1008 Email: [bciwideformat@gmail.com](mailto:bciwideformat@gmail.com) Online: [www.bciimage.com](http://www.bciimage.com)



# VIEWPOINT TELESCOPING RETRACTOR

Suggested Uses:

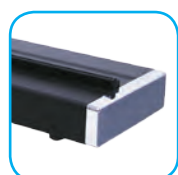
- Trade Shows
- Healthcare Lobbies
- School Orientation
- Performance Info

700  
RCAT  
RATINGLIFE  
HARDWARE  
WARRANTY

VIDEO

GRAPHIC  
ONLY OPTIONS  
AVAILABLE  
ONLINE

Viewpoint Retractor

Carry Case  
includedRectangular  
base  
includes  
silver ends.Base adjustments  
allow you to  
release the  
banner tension  
for smooth  
transportation.4-section  
twist lock  
telescoping  
pole for  
height  
adjustability.

**Give your promotion a contemporary look with this low profile retractor display.** Easily adjust the height of the retractor using the twist lock telescoping pole. Durable hardware construction is guaranteed to last use after use.

## Viewpoint Telescoping Retractor

| Item # | Description                       | 1      | 2-5    | 6-11   | 12-24  |
|--------|-----------------------------------|--------|--------|--------|--------|
| 263025 | Laminated No Curl Graphic Kit     | 365.00 | 350.00 | 335.00 | 320.00 |
| 262136 | No Curl Opaque Fabric Graphic Kit | 365.00 | 350.00 | 335.00 | 320.00 |
| 263026 | Hardware Only                     | 190.00 | 180.00 | 175.00 | 165.00 |

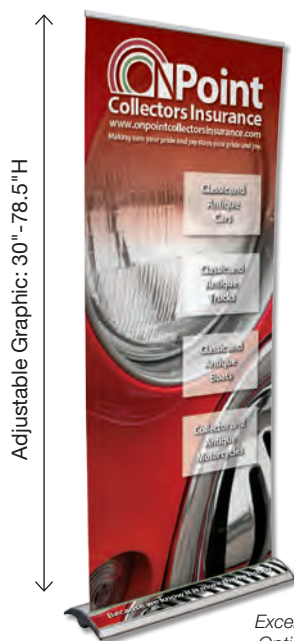
Kit Includes: Hardware, Installed Graphic and Carry Case

(C)

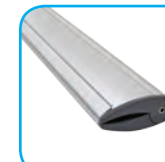
# EXCELLENT TELESCOPING RETRACTOR

300  
RCAT  
RATING1 YEAR  
HARDWARE  
WARRANTY

VIDEO

GRAPHIC  
ONLY OPTIONS  
AVAILABLE  
ONLINEExcellent Retractor with  
Optional Base Graphic

Can also be used as a table top display!

Carry Case  
includedUnique  
base folds  
in half for  
portability.4-section  
telescoping  
pole for height  
adjustment.

**Customize your retractor from top to bottom with a base that accepts a graphic.** Banner height adjusts easily with the telescoping pole. Durable aluminum base with fold-out wings add extra stability.

## Excellent Telescoping Retractor

| Item # | Description           | 1      | 2-5    | 6-11   | 12-24  |
|--------|-----------------------|--------|--------|--------|--------|
| 262194 | Kit                   | 400.00 | 376.00 | 356.00 | 332.00 |
| 260036 | Hardware Only         | 238.00 | 230.00 | 221.00 | 213.00 |
| 190589 | Optional Base Graphic | 20.00  | 18.80  | 17.80  | 16.60  |

Kit Includes: Hardware, Installed Graphic and Carry Case

(C)

## PRODUCT SPECIFICATIONS

| Description         | Product Size                         | Finished Graphic Size    | Product Wt. | Graphic Media                              |
|---------------------|--------------------------------------|--------------------------|-------------|--------------------------------------------|
| Viewpoint Retractor | 35.75"W x 36"-81.5"H x 7.25"D        | 33.25"W x 33.25"-78.75"H | 11 lbs.     | Laminated No Curl or No Curl Opaque Fabric |
| Excellent Retractor | 35.125"W x 32.75"-81.625"H x 10.25"D | 33.5"W x 30"-78.5"H      | 12 lbs.     | No Curl Opaque Fabric                      |

Imprint set-up fee: \$40.00(G)

Installation: Banner attaches with snap rail on top and banner tape on bottom

View current graphic templates, assembly videos and instructions on our website

See pages 168-170 for additional information that may apply to your order

HARDWARE ONLY LEAD TIME: SHIPS SAME DAY WHEN ORDERED BEFORE 2 PM CST

STANDARD LEAD TIME  
**2DAYS**  
FROM PROOF APPROVAL



## Suggested Uses:

- Clinics
- Sports Stores
- Career Fairs
- Presentations

# SUPERB TELESCOPING RETRACTOR

**800**  
RCAT  
RATING

**LIFE**  
HARDWARE  
WARRANTY

**VIDEO**



Use this retractor as a floor or table top display.



**With easy-to-install graphic rollers, you can effortlessly change your message as often as you need.**

With an aluminum base and durable construction, this retractor will last a lifetime.

## Superb Telescoping Retractor

| Item # | Description              | 1      | 2-5    | 6-11   | 12-24  |
|--------|--------------------------|--------|--------|--------|--------|
| 261118 | Kit                      | 390.00 | 376.00 | 347.00 | 335.00 |
| 261119 | Hardware Only            | 228.00 | 220.00 | 203.00 | 196.00 |
| 262023 | Graphic Roller w/Graphic | 170.00 | 165.00 | 155.00 | 145.00 |
| 190419 | Graphic Only             | 162.00 | 156.00 | 144.00 | 139.00 |

Kit Includes: Hardware, Installed Graphic and Carry Case

(C)

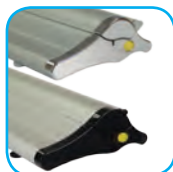


Carry Case included

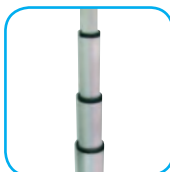


Adjustable Graphic: 34.5"-78"H

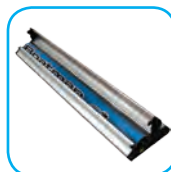
Superb Retractor with Silver Ends



Low profile, footless base is available with black or silver end caps.



The 4-section twist lock telescoping pole offers adjustable banner height from 34.5" to 78".



Base flaps open, making it easy to set in a new graphic.

## OPTIONAL ADD-ON



Ultimate LED Single Light Kit  
Item # 150120  
See Page 148

## PRODUCT SPECIFICATIONS

| Description      | Product Size                 | Finished Graphic Size | Product Wt. | Graphic Media     |
|------------------|------------------------------|-----------------------|-------------|-------------------|
| Superb Retractor | 35.5"W x 37"-80.5"H x 7.75"D | 33.5"W x 34.5"-78"H   | 8 lbs.      | Laminated No Curl |

Imprint set-up fee: \$40.00(G)  
**Installation:** Banner attaches with snap rail on top and snap rail and tape leader on bottom  
 View current graphic templates, assembly videos and instructions on our website  
 See pages 168-170 for additional information that may apply to your order  
**HARDWARE ONLY LEAD TIME: SHIPS SAME DAY WHEN ORDERED BEFORE 2 PM CST**

STANDARD LEAD TIME  
**2DAYS**  
FROM PROOF APPROVAL

Call: 866 971-1008 Email: bciwideformat@gmail.com Online: www.bciimage.com

# XCHANGE RETRACTOR

**3 YEAR  
HARDWARE  
WARRANTY**
**800  
RCAT  
RATING**
**VIDEO**
**Suggested Uses:**

- Trade Shows
- Media Events
- Store Promos
- Lobby Information



Adjustable Graphic: 62.625"-79"H


*Carry Case included*


Use one retractor and multiple graphics to share changing information throughout the year.

**Simple, slide-in and slide-out graphics make this our easiest graphic change retractor!** The stylish hardware design is extremely durable and affordably priced, making this retractor an easy choice for repeated use.

**XChange Retractor**

| Item #                                                   | Description   | 1      | 2-5    | 6-11   | 12-24  |
|----------------------------------------------------------|---------------|--------|--------|--------|--------|
| 263050                                                   | Kit           | 335.00 | 315.00 | 298.00 | 278.00 |
| 263051                                                   | Hardware Only | 195.00 | 183.00 | 174.00 | 162.00 |
| 263052                                                   | Graphic Kit   | 140.00 | 132.00 | 125.00 | 116.00 |
| Kit Includes: Hardware, Installed Graphic and Carry Case |               |        |        |        |        |
| Graphic Kit Includes: Top Rail, Strip and Graphic        |               |        |        |        |        |



Graphic features a plastic mounting rail that easily slides in and out of the flip-open base for smooth graphic changes.



Aluminum, footless base is available in silver.



The 2-section, flip-lever telescoping pole offers adjustable banner height from 62.625" to 79".



Easily turn base adjustments to add tension.

**PRODUCT SPECIFICATIONS**

STANDARD LEAD TIME  
**2DAYS**  
FROM PROOF APPROVAL

| Description                                                                             | Product Size                       | Finished Graphic Size | Product Wt. | Graphic Media     |
|-----------------------------------------------------------------------------------------|------------------------------------|-----------------------|-------------|-------------------|
| XChange Retractor                                                                       | 35.375"W x 65.125"-81.5"H x 8.75"D | 33"W x 62.625"-79"H   | 12 lbs.     | Laminated No Curl |
| Imprint set-up fee: \$40.00(G)                                                          |                                    |                       |             |                   |
| Installation: Banner attaches with snap rail on top and slide-in plastic rail on bottom |                                    |                       |             |                   |
| View current graphic templates, assembly videos and instructions on our website         |                                    |                       |             |                   |
| See pages 168-170 for additional information that may apply to your order               |                                    |                       |             |                   |
| <b>HARDWARE ONLY LEAD TIME: SHIPS SAME DAY WHEN ORDERED BEFORE 2 PM CST</b>             |                                    |                       |             |                   |



## Suggested Uses:

- Retail Promotions
- Travel Agencies
- Restaurants
- Hotels

# CHANGE AGENT RETRACTORS

**300**  
RCAT  
RATING

**1** YEAR  
HARDWARE  
WARRANTY

**VIDEO**



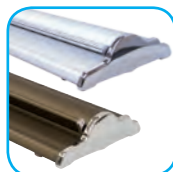
The Change Agent is perfect for changing out store promotions.

**Graphic changes are made easy with a hook and loop leader!** These retractors feature a fabric graphic for a professional look. With a variety of sizes to choose from, you are sure to find the perfect fit for all your needs.

## Change Agent Retractor

| Item # | Description       | 1      | 2-5    | 6-11   | 12-24  |
|--------|-------------------|--------|--------|--------|--------|
| 263200 | 31" Kit           | 290.00 | 273.00 | 258.00 | 241.00 |
| 263201 | 31" Hardware Only | 149.00 | 140.00 | 133.00 | 124.00 |
| 190388 | 31" Graphic Only  | 141.00 | 133.00 | 125.00 | 117.00 |
| 263202 | 33" Kit           | 317.00 | 298.00 | 282.00 | 263.00 |
| 263203 | 33" Hardware Only | 155.00 | 146.00 | 138.00 | 129.00 |
| 190389 | 33" Graphic Only  | 162.00 | 152.00 | 144.00 | 134.00 |
| 263204 | 36" Kit           | 325.00 | 310.00 | 295.00 | 275.00 |
| 263205 | 36" Hardware Only | 159.00 | 149.00 | 142.00 | 132.00 |
| 190381 | 36" Graphic Only  | 166.00 | 156.00 | 148.00 | 138.00 |

Kit Includes: Hardware, Installed Graphic and Carry Case (C)



Robust aluminum base available in champagne and silver.



The 2-section twist lock telescoping pole offers adjustable banner height from 69" to 80".



Graphic features a hook and loop leader to easily remove and replace graphics.

## OPTIONAL ADD-ON



Ultimate LED Single Light Kit  
Item # 150120  
See Page 148

## PRODUCT SPECIFICATIONS

| Description                | Product Size                | Finished Graphic Size | Product Wt. | Graphic Media         |
|----------------------------|-----------------------------|-----------------------|-------------|-----------------------|
| 31" Change Agent Retractor | 33.125"W x 72"-83"H x 9.5"D | 31"W x 69"-80"H       | 14.25 lbs.  | No Curl Opaque Fabric |
| 33" Change Agent Retractor | 35.125"W x 72"-83"H x 9.5"D | 33"W x 69"-80"H       | 15 lbs.     | No Curl Opaque Fabric |
| 36" Change Agent Retractor | 37.875"W x 72"-83"H x 9.5"D | 36"W x 69"-80"H       | 15.5 lbs.   | No Curl Opaque Fabric |

Imprint set-up fee: \$40.00(G)

Installation: Banner attaches with snap rail on top and hook and loop on bottom  
View current graphic templates, assembly videos and instructions on our website

See pages 168-170 for additional information that may apply to your order

**HARDWARE ONLY LEAD TIME: SHIPS SAME DAY WHEN ORDERED BEFORE 2 PM CST**

**STANDARD LEAD TIME**  
**2DAYS**  
FROM PROOF APPROVAL

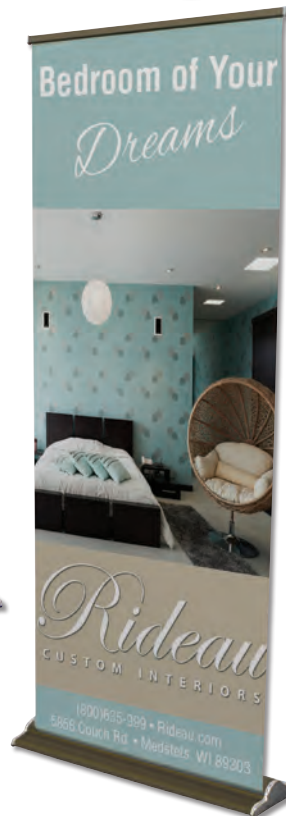
Call: 866 971-1008 Email: [bciwideformat@gmail.com](mailto:bciwideformat@gmail.com) Online: [www.bciimage.com](http://www.bciimage.com)

RETRACTORS

Adjustable Graphic: 69"-80"H



36" Change Agent Retractor with Silver Base



33" Change Agent Retractor with NEW Champagne Base



31" Change Agent Retractor with Silver Base



Carry Case included



Carry Case included



# SUPREME TELESCOPING RETRACTOR

**800**  
RCAT  
RATING

**LIFE**  
HARDWARE  
WARRANTY

**VIDEO**
**Suggested Uses:**

- Store Promotions
- Airports
- Trade Shows
- Table Tops

**BEST  
SELLER**

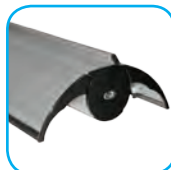

Adjustable Graphic: 36"-86"H

*Supreme Retractor*

*Supreme Retractor  
shown on table*

*Great for retail marketing and store promotions!*

*Carry Case included*
**OPTIONAL ADD-ON**

*Ultimate LED Single Light Kit  
Item # 151020  
See Page 148*


Durable  
aluminum  
base with fold  
out wings add  
extra stability.



4-section  
telescoping  
pole for  
quick height  
adjustment.



Simply  
twist knob  
to increase  
tension.

**Simply add or release tension with the turn of a knob to preserve your banner while traveling.** Easily adjust the height of the retractor using the twist lock telescoping pole. Banner connects with internal snap rail for convenient graphic changes.

**Supreme Telescoping Retractor**

| Item # | Description                       | 1      | 2-5    | 6-11   | 12-24  |
|--------|-----------------------------------|--------|--------|--------|--------|
| 262011 | Laminated No Curl Graphic Kit     | 455.00 | 435.00 | 410.00 | 390.00 |
| 262155 | No Curl Opaque Fabric Graphic Kit | 455.00 | 435.00 | 410.00 | 390.00 |
| 260010 | Hardware Only                     | 293.00 | 281.00 | 265.00 | 252.00 |
| 190185 | Graphic Only                      | 162.00 | 158.00 | 153.00 | 147.00 |

Kit Includes: Hardware, Installed Graphic and Carry Case

(C)

**PRODUCT SPECIFICATIONS**

| Description                                                                     | Product Size                    | Finished Graphic Size | Product Wt. | Graphic Media                              |
|---------------------------------------------------------------------------------|---------------------------------|-----------------------|-------------|--------------------------------------------|
| Supreme Retractor                                                               | 35.25"W x 40.25"-90.25"H x 10"D | 33"W x 36"-86"H       | 18 lbs.     | Laminated No Curl or No Curl Opaque Fabric |
| Imprint set-up fee: \$40.00(G)                                                  |                                 |                       |             |                                            |
| Installation: Banner attaches with snap rail on top and snap rail on bottom     |                                 |                       |             |                                            |
| View current graphic templates, assembly videos and instructions on our website |                                 |                       |             |                                            |
| See pages 168-170 for additional information that may apply to your order       |                                 |                       |             |                                            |
| <b>HARDWARE ONLY LEAD TIME: SHIPS SAME DAY WHEN ORDERED BEFORE 2 PM CST</b>     |                                 |                       |             |                                            |

STANDARD LEAD TIME  
**2DAYS**  
FROM PROOF APPROVAL

## Suggested Uses:

- Concert PRs
- Event Centers
- Trade Shows
- Sport Arenas

# JUMBO TALL RETRACTOR

**100**  
RCAT  
RATING

**1** YEAR  
HARDWARE  
WARRANTY

**VIDEO**



Place this tall retractor in large indoor areas to attract attention.

**EASY**  
SET-UP

**GRAPHIC**  
ONLY OPTIONS  
AVAILABLE  
ONLINE



Jumbo Tall Retractor



Carry Case included

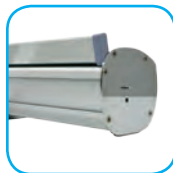
**This retractor stands at an impressive 10' tall - an economical option for areas with high ceilings.** Base features a heavy-duty, high-tension spring to keep the large graphic taut, while the double-footed support keeps the display stable.

## Jumbo Tall Retractor

| Item # | Description                       | 1      | 2-5    | 6-11   | 12-24  |
|--------|-----------------------------------|--------|--------|--------|--------|
| 262110 | Laminated No Curl Graphic Kit     | 410.00 | 395.00 | 380.00 | 365.00 |
| 262190 | No Curl Opaque Fabric Graphic Kit | 410.00 | 395.00 | 380.00 | 365.00 |
| 262111 | Hardware Only                     | 210.00 | 200.00 | 195.00 | 180.00 |

Kit Includes: Hardware, Installed Graphic and Carry Case

(C)



Rectangular aluminum base with squared front looks clean and streamlined.



3-section shock cord pole makes assembly fast.



Easy one person set up.

## PRODUCT SPECIFICATIONS

| Description          | Product Size                | Finished Graphic Size | Product Wt. | Graphic Media                              |
|----------------------|-----------------------------|-----------------------|-------------|--------------------------------------------|
| Jumbo Tall Retractor | 47" W x 122.25" H x 15.5" D | 47" W x 116.5" H      | 20 lbs.     | Laminated No Curl or No Curl Opaque Fabric |

Imprint set-up fee: \$40.00(G)

Installation: Banner attaches with snap rail on top and banner tape on bottom

View current graphic templates, assembly videos and instructions on our website

See pages 168-170 for additional information that may apply to your order

**HARDWARE ONLY LEAD TIME: SHIPS SAME DAY WHEN ORDERED BEFORE 2 PM CST**

STANDARD LEAD TIME  
**2DAYS**  
FROM PROOF APPROVAL

Call: 866 971-1008 Email: [bciwideformat@gmail.com](mailto:bciwideformat@gmail.com) Online: [www.bciimage.com](http://www.bciimage.com)



# JUMBO WIDE RETRACTORS

**100**  
RCAT  
RATING

**1** YEAR  
HARDWARE  
WARRANTY

**VIDEO**
**GRAPHIC**  
ONLY OPTIONS  
AVAILABLE  
ONLINE

**Suggested Uses:**

- Trade Shows
- Back Wall Displays
- Press Conferences
- Meetings

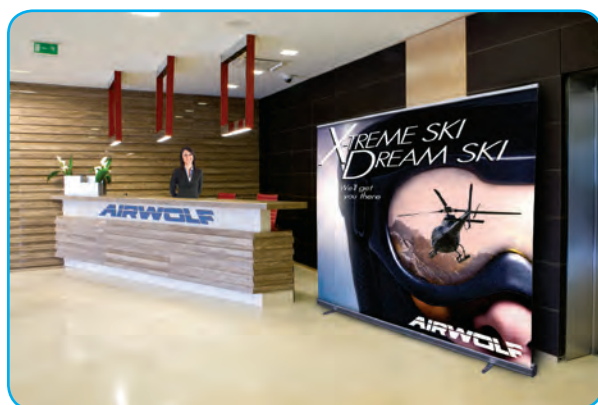

 8' Jumbo Wide  
Retractor

 5' Jumbo Wide  
Retractor

 6' Jumbo Wide  
Retractor


Carry Case included

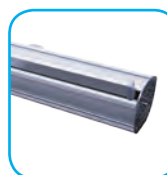
**Create an impressive backdrop with our widest retractor.** Aluminum base with double-foot support adds extra stability, while high-tension base springs keep your banner taut.



Use as a backdrop in entryways or at trade shows.

**Jumbo Wide Retractors**

| Item #                                                   | Description                   | 1      | 2-5    | 6-11   | 12-24  |
|----------------------------------------------------------|-------------------------------|--------|--------|--------|--------|
| 262138                                                   | 5' No Curl Fabric Graphic Kit | 510.00 | 490.00 | 470.00 | 450.00 |
| 261080                                                   | 5' 13 oz Smooth Graphic Kit   | 510.00 | 490.00 | 470.00 | 450.00 |
| 261081                                                   | 5' Hardware Only              | 233.00 | 225.00 | 208.00 | 196.00 |
| 262139                                                   | 6' No Curl Fabric Graphic Kit | 615.00 | 595.00 | 565.00 | 540.00 |
| 261082                                                   | 6' 13 oz Smooth Graphic Kit   | 615.00 | 595.00 | 565.00 | 540.00 |
| 261083                                                   | 6' Hardware Only              | 305.00 | 290.00 | 270.00 | 255.00 |
| 262140                                                   | 8' No Curl Fabric Graphic Kit | 720.00 | 695.00 | 670.00 | 645.00 |
| 261018                                                   | 8' 13 oz Smooth Graphic Kit   | 720.00 | 695.00 | 670.00 | 645.00 |
| 261019                                                   | 8' Hardware Only              | 375.00 | 360.00 | 350.00 | 335.00 |
| Kit Includes: Hardware, Installed Graphic and Carry Case |                               |        |        |        | (C)    |


 Hardware  
is available  
in silver.

 Two poles add  
extra support  
for the wide  
graphic.

**PRODUCT SPECIFICATIONS**

| Description             | Product Size              | Finished Graphic Size | Product Wt. (Fabric / 13 oz) | Graphic Media                  |
|-------------------------|---------------------------|-----------------------|------------------------------|--------------------------------|
| 5' Jumbo Wide Retractor | 61.375"W x 83"H x 15.75"D | 59.75"W x 78.75"H     | 18.85 lbs. / 20.75 lbs.      | No Curl Fabric or 13 oz Smooth |
| 6' Jumbo Wide Retractor | 73.625"W x 83"H x 15.75"D | 71.75"W x 78.75"H     | 21.35 lbs. / 23.5 lbs.       | No Curl Fabric or 13 oz Smooth |
| 8' Jumbo Wide Retractor | 96"W x 83"H x 15.75"D     | 94.75"W x 78.75"H     | 26.35 lbs. / 29.5 lbs.       | No Curl Fabric or 13 oz Smooth |

Imprint set-up fee: \$40.00(G)

Installation: Banner attaches with snap rail on top and banner tape on bottom

View current graphic templates, assembly videos and instructions on our website

See pages 168-170 for additional information that may apply to your order

**HARDWARE ONLY LEAD TIME: SHIPS SAME DAY WHEN ORDERED BEFORE 2 PM CST**
**STANDARD LEAD TIME**  
**4 DAYS**  
 FROM PROOF APPROVAL



## Suggested Uses:

- Trade Shows
- Hallways
- Media Events
- Entertainment Stage

# MAMMOTH RETRACTOR

**1 YEAR**  
HARDWARE  
WARRANTY

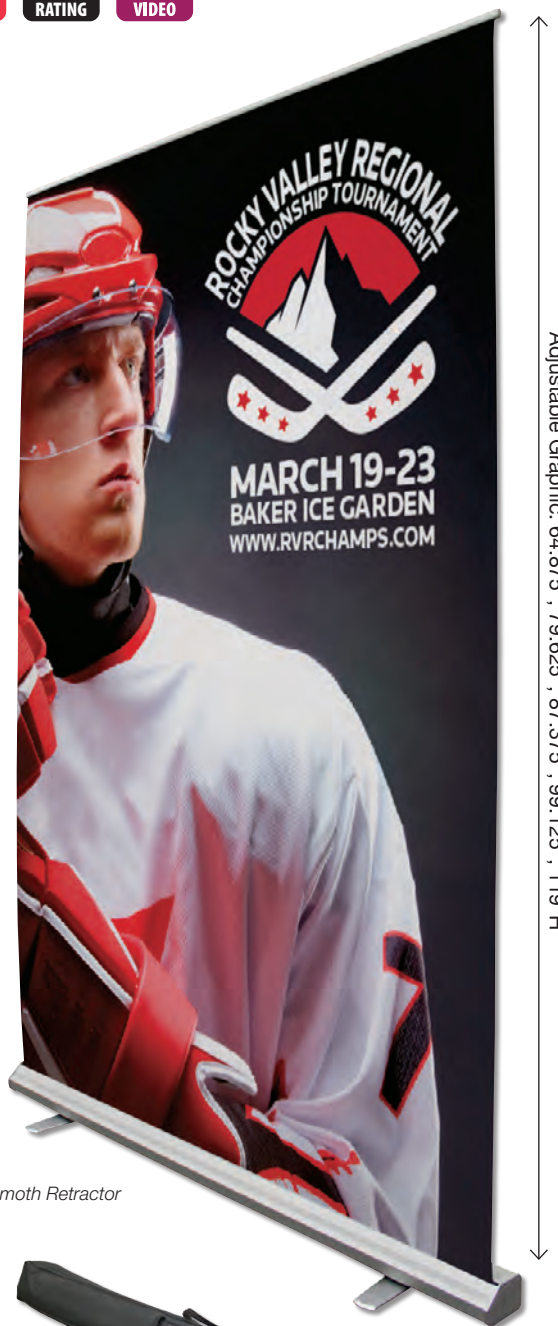
**250**  
RCAT  
RATING

**VIDEO**



The Mammoth is perfect for event centers and arenas.

**GRAPHIC**  
ONLY OPTIONS  
AVAILABLE  
ONLINE



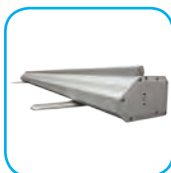
Adjustable Graphic: 64.875", 79.625", 87.375", 99.125", 119"H

**Reaching over 10' high and 6' wide, this enormous retractor is perfect for large spaces!** Heavy-duty top rail easily handles the stress and weight of the large graphic.

## Mammoth Retractor

| Item # | Description                | 1      | 2-5    | 6-11   | 12-24  |
|--------|----------------------------|--------|--------|--------|--------|
| 262137 | No Curl Fabric Graphic Kit | 750.00 | 730.00 | 710.00 | 690.00 |
| 261086 | 13 oz Smooth Graphic Kit   | 750.00 | 730.00 | 710.00 | 690.00 |
| 261087 | Hardware Only              | 414.00 | 405.00 | 396.00 | 387.00 |

Kit Includes: Hardware, Installed Graphic and Carry Case (C)



Attractive aluminum base features two feet for added stability.



Telescoping pole has five push buttons to allow for multiple heights.



Quick two person assembly.

Carry Case included



## PRODUCT SPECIFICATIONS

| Description       | Product Size                                                | Finished Graphic Size                              | Product Wt. (Fabric / 13 oz) | Graphic Media                  |
|-------------------|-------------------------------------------------------------|----------------------------------------------------|------------------------------|--------------------------------|
| Mammoth Retractor | 80"W x 68.875", 83.625", 91.375", 103.125", 123"H x 15.75"D | 78.5"W x 64.875", 79.625", 87.375", 99.125", 119"H | 28.43 lbs. / 32 lbs.         | No Curl Fabric or 13 oz Smooth |

Imprint set-up fee: \$40.00(G)

Installation: Banner attaches with snap rail on top and banner tape on bottom

View current graphic templates, assembly videos and instructions on our website

See pages 168-170 for additional information that may apply to your order

**HARDWARE ONLY LEAD TIME: SHIPS SAME DAY WHEN ORDERED BEFORE 2 PM CST**

STANDARD LEAD TIME  
**4 DAYS**  
FROM PROOF APPROVAL

Call: 866 971-1008 Email: [bciwideformat@gmail.com](mailto:bciwideformat@gmail.com) Online: [www.bciimage.com](http://www.bciimage.com)

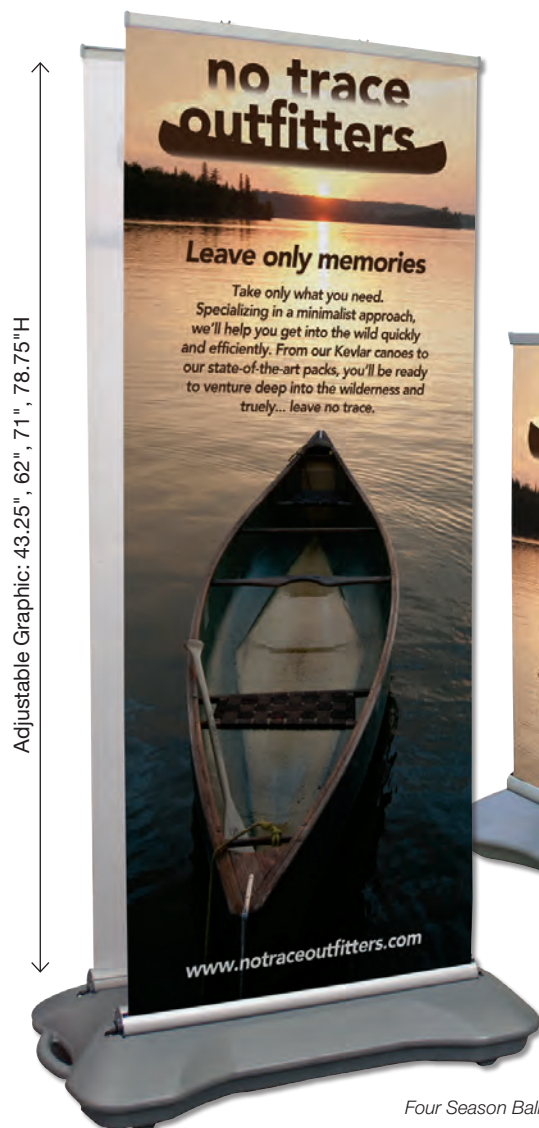
# FOUR SEASON BALLAST RETRACTOR

**150**  
RCAT  
RATING

**1** YEAR  
HARDWARE  
WARRANTY

**OUTDOOR**
**VIDEO**
**Suggested Uses:**

- Fairs
- Parks
- Golf Courses
- Parking Lots



Adjustable Graphic: 43.25", 62", 71", 78.75"H

*Four Season Ballast Retractor*

*Carry Case included*


Molded handle and wheels makes moving a cinch.



Easily adjust the 3-section pole to four heights: 51.5", 70.25", 79.25" and 87".



Removable graphic roller allows for frequent graphic changes.



A smart, portable retractor for outdoor advertising.

## Depend on this durable, plastic base with wheels to support your outdoor advertising.

Wide base includes storage for two removable graphic rollers allowing for one or both sides to be viewed. Base holds up to 14.75 gallons of water.

### Four Season Ballast Retractor

| Item #                                                                             | Description              | 1      | 2-5    | 6-11   | 12-24  |
|------------------------------------------------------------------------------------|--------------------------|--------|--------|--------|--------|
| 263001                                                                             | Kit                      | 515.00 | 495.00 | 475.00 | 455.00 |
| 263003                                                                             | Hardware Only            | 465.00 | 445.00 | 430.00 | 420.00 |
| 263004                                                                             | Graphic Roller w/Graphic | 165.00 | 160.00 | 155.00 | 150.00 |
| Kit Includes: Hardware, (2) Graphic Rollers with Installed Graphics and Carry Case |                          |        |        |        | (C)    |

## PRODUCT SPECIFICATIONS

| Description                   | Product Size                              | Finished Graphic Size              | Product Wt. | Graphic Media |
|-------------------------------|-------------------------------------------|------------------------------------|-------------|---------------|
| Four Season Ballast Retractor | 44"W x 51.5", 70.25", 79.25", 87"H x 24"D | 31.5"W x 43.25", 62", 71", 78.75"H | 42.5 lbs.   | 13 oz Vinyl   |

Imprint set-up fee: \$40.00(G)

Installation: Banner attaches with snap rail on top and banner tape on bottom

View current graphic templates, assembly videos and instructions on our website

See pages 168-170 for additional information that may apply to your order

**HARDWARE ONLY LEAD TIME: SHIPS SAME DAY WHEN ORDERED BEFORE 2 PM CST**

STANDARD LEAD TIME  
**2DAYS**  
FROM PROOF APPROVAL



## Suggested Uses:

- Sidewalk Sales
- Outdoor Events
- Terraces
- Bar Promotions

# FOUR SEASON TREK RETRACTOR

**300**  
RCAT  
RATING

**1** YEAR  
HARDWARE  
WARRANTY

**OUTDOOR**

**VIDEO**

GRAPHIC  
ONLY OPTIONS  
AVAILABLE  
ONLINE

**Your display will flex in the wind with a spring loaded pole, while the heavy-duty base keeps it stable.** Shock cord pole provides quick assembly. Available two-sided for the option to share your message on one or both sides.

## Four Season Trek Retractor

| Item #                                                             | Description   | 1      | 2-5    | 6-11   | 12-24  |
|--------------------------------------------------------------------|---------------|--------|--------|--------|--------|
| 263033                                                             | Kit           | 615.00 | 590.00 | 565.00 | 540.00 |
| 263034                                                             | Hardware Only | 390.00 | 380.00 | 365.00 | 350.00 |
| Kit Includes: Hardware, (2) Installed Graphics and (2) Carry Cases |               |        |        |        | (C)    |



Heavy-duty base has black end caps.



Removable feet attach securely to the base for a strong and solid footprint.



(2) Cases included



Four Season Trek Retractor

RETRACTORS



Perfect temporary outdoor advertising.

# FOUR SEASON TREK LITE RETRACTOR

**250**  
RCAT  
RATING

**1** YEAR  
HARDWARE  
WARRANTY

**OUTDOOR**

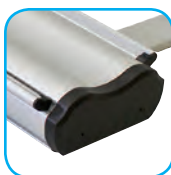
**VIDEO**

GRAPHIC  
ONLY OPTIONS  
AVAILABLE  
ONLINE

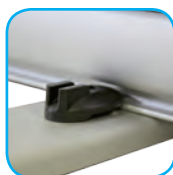
**Featuring the same great benefits as the original while weighing almost 50% less!** Shock cord pole provides quick assembly. It is available two-sided for the option to share your message on one or both sides.

## Four Season Trek Lite Retractor

| Item #                                                            | Description   | 1      | 2-5    | 6-11   | 12-24  |
|-------------------------------------------------------------------|---------------|--------|--------|--------|--------|
| 263040                                                            | Kit           | 400.00 | 385.00 | 370.00 | 355.00 |
| 263041                                                            | Hardware Only | 265.00 | 260.00 | 250.00 | 245.00 |
| Kit Includes: Hardware, (2) Installed Graphics and (1) Carry Case |               |        |        |        | (C)    |



Heavy-duty base has black end caps.



Removable feet attach securely to the base for a strong and solid footprint.



Carry Case included



Four Season Trek Lite Retractor

## PRODUCT SPECIFICATIONS

| Description                     | Product Size                 | Finished Graphic Size | Product Wt. | Graphic Media |
|---------------------------------|------------------------------|-----------------------|-------------|---------------|
| Four Season Trek Retractor      | 35.125"W x 82"H x 33.625"D   | 33.25"W x 77.25"H     | 40.25 lbs.  | 13 oz Vinyl   |
| Four Season Trek Lite Retractor | 35.625"W x 82.25"H x 32.25"D | 33.25"W x 77.25"H     | 22.75 lbs.  | 13 oz Vinyl   |

Imprint set-up fee: \$40.00(G)

Installation: Banner attaches with snap rail on top and banner tape on bottom

View current graphic templates, assembly videos and instructions on our website

See pages 168-170 for additional information that may apply to your order

**HARDWARE ONLY LEAD TIME: SHIPS SAME DAY WHEN ORDERED BEFORE 2 PM CST**

STANDARD LEAD TIME  
**2DAYS**  
FROM PROOF APPROVAL



# FOUR SEASON TELESCOPING RETRACTOR

**150**  
 RCAT  
 RATING

**1** YEAR  
 HARDWARE  
 WARRANTY

**OUTDOOR**
**VIDEO**
**Suggested Uses:**

- Storefronts
- Theater Entrances
- Outdoor Events
- Boardwalks

Adjustable Graphic: 53.75"-78.75"H


*Four Season Telescoping Retractor*


Easily move your display outdoors to bring people in.

**GRAPHIC**  
**ONLY OPTIONS**  
**AVAILABLE**  
**ONLINE**

From the front, this outdoor display appears baseless, but don't let that fool you - the adjustable graphic hides the heavy-duty base. An easy-to-adjust telescoping pole gives you a range of graphic heights to choose from.


*(2) Carry Cases included*
**Four Season Telescoping Retractor**

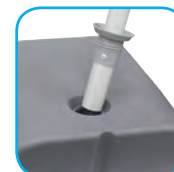
| Item # | Description   | 1      | 2-5    | 6-11   | 12-24  |
|--------|---------------|--------|--------|--------|--------|
| 263015 | Kit           | 310.00 | 290.00 | 270.00 | 245.00 |
| 263014 | Hardware Only | 144.00 | 140.00 | 136.00 | 131.00 |

Kit Includes: Hardware, Installed Graphic and (2) Carry Cases

(C)



The wheeled base makes relocation a breeze.



Fill the base with sand or water for added stability and seal with the twist-in pole.

**PRODUCT SPECIFICATIONS**

| Description                                                                                                                                                                                                                                                                                                                                                    | Product Size                 | Finished Graphic Size   | Product Wt. | Graphic Media |
|----------------------------------------------------------------------------------------------------------------------------------------------------------------------------------------------------------------------------------------------------------------------------------------------------------------------------------------------------------------|------------------------------|-------------------------|-------------|---------------|
| Four Season Retractor                                                                                                                                                                                                                                                                                                                                          | 32.375"W x 55"-80"H x 18.5"D | 31.5"W x 53.75"-78.75"H | 9 lbs.      | 13 oz Vinyl   |
| Imprint set-up fee: \$40.00(G)<br>Installation: Banner attaches with snap rail on top and banner tape on bottom<br>View current graphic templates, assembly videos and instructions on our website<br>See pages 168-170 for additional information that may apply to your order<br><b>HARDWARE ONLY LEAD TIME: SHIPS SAME DAY WHEN ORDERED BEFORE 2 PM CST</b> |                              |                         |             |               |

**STANDARD LEAD TIME**  
**2DAYS**  
 FROM PROOF APPROVAL