



Application Guide

	POP Displays	Exhibits & Kiosks	Framing	Framing - Archival	Signage - Interior	Signage - Exterior	Signage - Structural
\$ Fome-Cor® ValuBoard™	S	S	L		S		
Fome-Cor® Board	S	S	L		S		
Foam-X® Recovery	S	S	L		S		
Fome-Cor® Acid-Free				L			
Fome-Cor® Self-Adhesive HT	S	S	L		S		
Fome-Cor® Self-Adhesive LT	S	S	L		S		
Fome-Cor® Heat-Activated	S	S	L		S		
Fome-Cor® JetMount®	S	S	L		S		
\$\$ e-pvc™	M	M	L	L	M	M	
Sintra®	M	M	L	L	M	M	
FiberMate™	M	M	L		M		
Gatorblanks®	M	M			M	M	
Gatorplast®	M	M			M		
Gatorfoam®	M	M	L		M	M1	
Gatorfoam® Exterior						M	
e-panel™	L	L	L	L	L	L	
\$\$\$ Dibond®	L	L	L	L	L	L	L1

PRICE RANGE

- S** Short-term application life
- M** Medium-term application life
- M1** Black Gatorfoam is not recommended for outdoor usage
- L** Long-term application life
- L1** Applications such as workzone signage, canopies, pylons and column covers

Trialing is recommended to ensure suitability for the proposed application and fabrication before full-scale commercialization.

www.bciimage.com 866 971-1008
bciwideformat@gmail.com



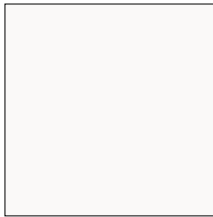
800.626.3365
graphicdisplay.com



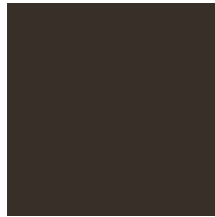


www.bciimage.com 866 971-1008 bciwideformat@gmail.com

DIBOND COLORS



White



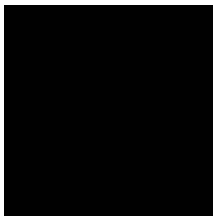
Dark Bronze



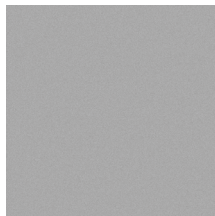
Hunter Red



Dark Green



Black



Fine Silver

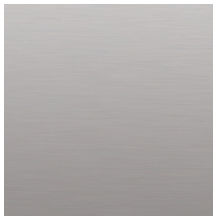


Caution Yellow

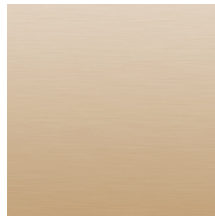


Ultra Marine Blue

DIBOND METAL SERIES



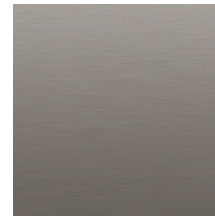
Brushed Silver



Brushed Bronze



Brushed Copper



Brushed Stainless



www.bciimage.com 866 971-1008 bciwideformat@gmail.com

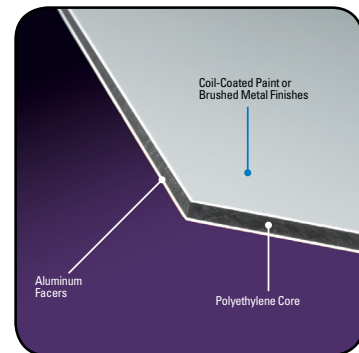
PRODUCT AVAILABILITY

	Gauges	Colors			Sizes
Dibond	2mm, 3mm, 4mm	White Black Dark Bronze Fine Silver	Hunter Red Caution Yellow Dark Green Ultra Marine Blue	Brushed Silver Brushed Bronze Brushed Copper Brushed Stainless	Standard sheet size for all colors and brushed metals is 48" x 96" White is also standard in 60" x 120" All colors (excluding brushed metals) available in 60" widths custom sheet sizes available
e-panel	2mm, 3mm, 4mm, 6mm	White	Brushed Silver		48" x 96"

Due to multiple product configurations, please refer to the website for product availability in the desired thickness and size.

DIBOND SPECIFICATIONS

	4' X 8' (1.22 M X 2.44 M)	4' X 10' (1.22 M X 3.05 M)	5' X 10' (1.52 M X 3.05 M)
White over White	2mm, 3mm, 4mm	2mm	3mm
White over Black	3mm	3mm	
Dark Bronze over Fine Silver	3mm		
Hunter Red over Caution Yellow	3mm		
Dark Green over Ultra Marine Blue	3mm		
All Metal Series Colors*	3mm		



*Brushed Silver is backed by Fine Silver. Brushed Bronze, Copper, and Stainless are backed by White. Custom sizes, colors and thicknesses available upon request.

For updated colors and sizes, please visit us at www.DibondUSA.com or call us at 800.626.3365.



800.626.3365
graphicdisplay.com



DIBOND®

ALUMINUM COMPOSITE MATERIAL (ACM) FAMILY

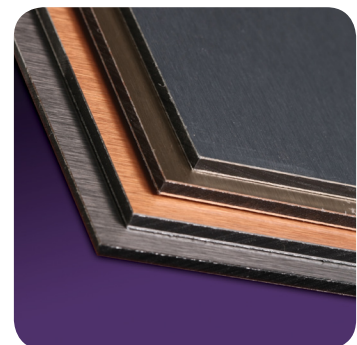
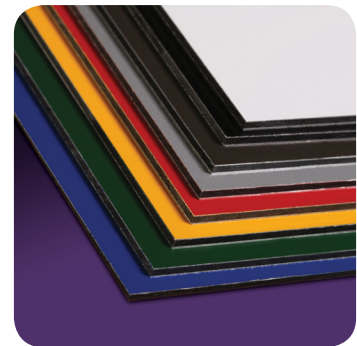
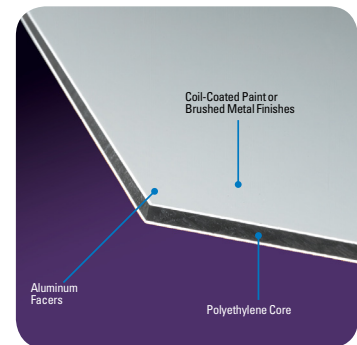
- **Dibond®** has been the industry's leading ACM for more than 15+ years. It is comprised of two pre-painted sheets of .012" aluminum with a solid polyethylene core.
- **e-panel™** is comprised of two pre-painted sheets of .008" aluminum with a solid polyethylene core, and manufactured in China.

WHY CHOOSE DIBOND?

- Flattest panel on the market
- Superior surface protects expensive digital and screen-printed graphics
- Provides excellent durability in outdoor applications
- Won't bow or oil can
- Approximately one half the weight of a solid aluminum sheet
- Can be routed and returned to add dimension or roll-formed to deliver sweeping curves

WHY CHOOSE E-PANEL?

- Recommended for flat panel applications





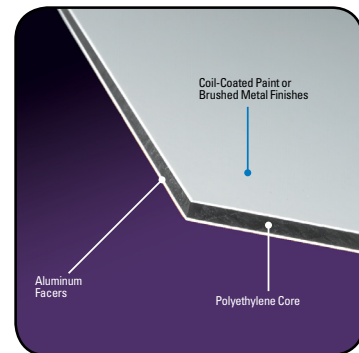
PRODUCT AVAILABILITY

	Gauges	Colors			Sizes
Dibond	2mm, 3mm, 4mm	White Black Dark Bronze Fine Silver	Hunter Red Caution Yellow Dark Green Ultra Marine Blue	Brushed Silver Brushed Bronze Brushed Copper Brushed Stainless	Standard sheet size for all colors and brushed metals is 48" x 96" White is also standard in 60" x 120" All colors (excluding brushed metals) available in 60" widths custom sheet sizes available
e-panel	2mm, 3mm, 4mm, 6mm	White	Brushed Silver	Mill Finish (Aluminum)	48" x 96"

Due to multiple product configurations, please refer to the website for product availability in the desired thickness and size.

DIBOND SPECIFICATIONS

	4' X 8' (1.22 M X 2.44 M)	4' X 10' (1.22 M X 3.05 M)	5' X 10' (1.52 M X 3.05 M)
White over White	2mm, 3mm, 4mm	2mm	3mm
White over Black	3mm	3mm	
Dark Bronze over Fine Silver	3mm		
Hunter Red over Caution Yellow	3mm		
Dark Green over Ultra Marine Blue	3mm		
All Metal Series Colors*	3mm		



*Brushed Silver is backed by Fine Silver. Brushed Bronze, Copper, and Stainless are backed by White. Custom sizes, colors and thicknesses available upon request.

For updated colors and sizes, please visit us at graphicdisplay.com or call us at 800.626.3365.



800.626.3365
graphicdisplay.com





Fabrication Guide

PRICE RANGE	Material	Mounting	Repositioning Vinyl	Digital Printing	Screen Printing	Painting	Knife Cutting	Saw Cutting	Routing	Die Cutting/Punching	Embossing	Forming Curves
\$	Fome-Cor® ValuBoard™	◆					◆			◆	◆	
	Fome-Cor® Board	◆		◆	◆	3	◆			◆	◆	
	Foam-X® Recovery	◆		◆	◆	3	◆			◆		
	Fome-Cor® Acid-Free	0					◆			◆		
	Fome-Cor® Self-Adhesive HT	◆					◆			◆	◆	
	Fome-Cor® Self-Adhesive LT	◆					◆			◆	◆	
	Fome-Cor® Heat-Activated	◆					◆			◆	◆	
	Fome-Cor® JetMount®	◆		◆	◆	3	◆			◆		
\$\$	e-pvc™	1	◆	◆	◆	◆	4	◆	◆	5		◆
	Sintra®	1	◆	◆	◆	◆	4	◆	◆	5		◆
	FiberMate™	◆		◆	◆	◆	◆	◆	◆			
	Gatorblanks®	◆				3	◆	◆	◆			
	Gatorplast®	◆	◆	◆	◆	3	◆	◆	◆	5		
	Gatorfoam®	◆		◆	2	3		◆	◆			
	Gatorfoam® Exterior	◆		◆	2	3		◆	◆			
	e-panel™	1	◆	◆	◆	◆		◆	◆	6		
\$\$\$	Dibond®	1	◆	◆	◆	◆		◆	◆	6		◆

- 0 Archival conservation mounting
- 1 Cold mounting techniques only
- 2 Face priming will provide better results
- 3 Do not expose polystyrene to solvent-based paints
- 4 1-3mm may be cut with a knife or blade
- 5 May be die cut in gauges up to 5mm or 3/16"
- 6 Punch press die set is required, not a steel rule die

Trialing is recommended to ensure suitability for the proposed application and fabrication before full-scale commercialization.



800.626.3365
graphicdisplay.com



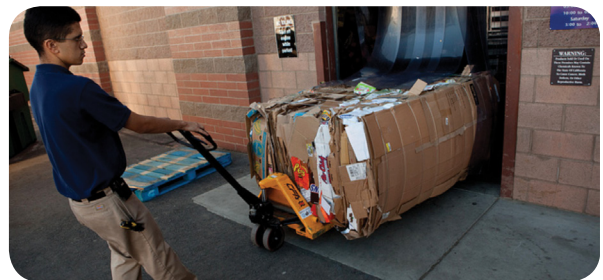
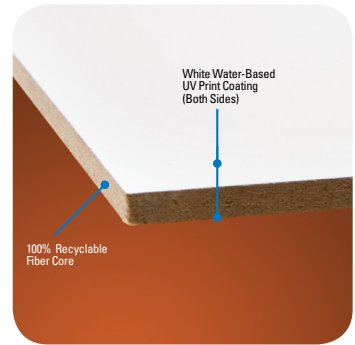


RECYCLABLE RIGID PRINT MEDIA

- **FiberMate™** is a wood fiber panel available in a gauge of 3.2mm and 5.5mm with a white water-based UV print coating known as Eco-Finish™ on both sides.

WHY CHOOSE FIBERMATE?

- The white Eco-Finish print coating is designed to provide excellent ink and paint adhesion on both sides allowing for double-sided printing or application.
- The panel is 100% recyclable in either “wood” or “paper” waste stream (assuming printing ink or mounting material is recyclable).



Can be recycled in either "wood" or "paper" waste stream

PRODUCT AVAILABILITY

	Gauges	Coating	Core	Size
FiberMate™	3.2mm, 5.5mm	Eco-Finish™ print coating white both sides	High-Density Fiberboard	49" x 97"



800.626.3365
graphicdisplay.com



FOME-COR®

THE PAPER-FACED FOAM BOARD FAMILY

- **Fome-Cor® Board** has been the industry's leading paper-faced foam board for more than 40+ years. It is comprised of extruded polystyrene foam with clay-coated white or black paper facers.
- **Fome-Cor® ValuBoard™** is comprised of extruded polystyrene foam with natural kraft facers.
- **Fome-Cor® Acid-Free** is comprised of extruded polystyrene foam with acid-free paper facers that meet Library of Congress standards for conservation framing.
- **Fome-Cor® Self-Adhesive** is comprised of extruded polystyrene foam with clay-coated paper facers, one of which is covered with pressure sensitive adhesive. Simply peel back the release facer as you position the graphic on the sticky surface.
- **Fome-Cor® Heat-Activated** is comprised of extruded polystyrene foam with clay-coated paper facers, one of which is covered with heat-activated adhesive.
- **Fome-Cor® JetMount®** is comprised of denser extruded polystyrene foam with clay-coated paper facers.
- **Foam-X® Recovery** is comprised of "memory retaining" polystyrene foam with clay-coated paper facers.

WHY CHOOSE FOME-COR?

- The original graphic arts foam board with a great reputation for performance
- Perfect for die cutting with a compressed edge that stays closed
- Quick service on cut-to-size orders including large sheets up to 8'x10'
- Uniquely embossable for 3-D effect displays
- Cuts easily and cleanly, even by hand
- Extremely lightweight
- Well-suited for screen printing or digital printing applications

WHY CHOOSE FOME-COR VALUBOARD?

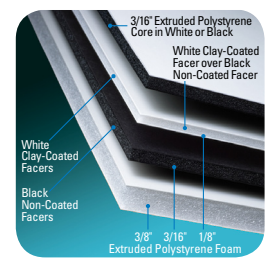
- A cost-effective alternative to corrugated cardboard
- Provides a smooth surface for mounting with no flute marks

WHY CHOOSE FOME-COR ACID-FREE?

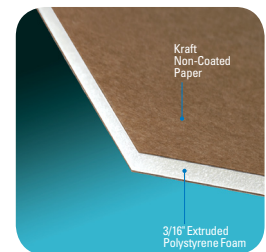
- Perfect for the archival preservation of valuable art and photographs
- No additional backing is required, saving time and framing materials

WHY CHOOSE FOME-COR SELF-ADHESIVE?

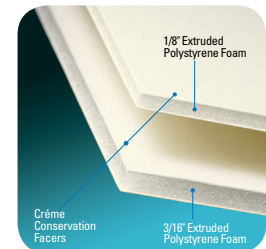
- Eliminates the use of pressure-sensitive adhesive stock
- Available in repositionable Low-Tack (LT) or immediate bonding High-Tack (HT)
- HT identified by red release facer and LT identified by blue release facer



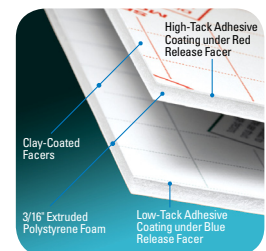
Fome-Cor Board



ValuBoard



Acid-Free



Self-Adhesive

FOME-COR®

WHY CHOOSE FOME-COR HEAT-ACTIVATED?

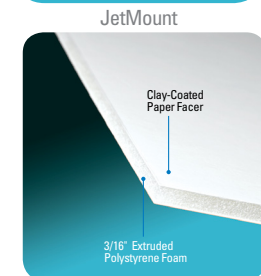
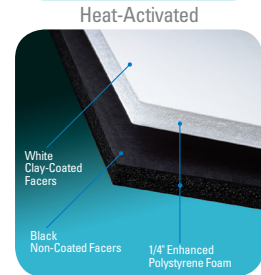
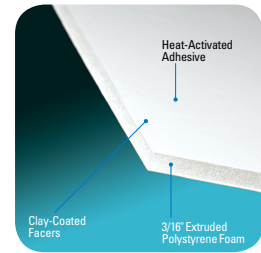
- Eliminates the use of hot melt tissue stock
- The adhesive is activated with low temperature settings for a quick, damage-free mount
- Can be used on a heated mechanical or vacuum dry mount press, or with a heated roller laminator

WHY CHOOSE FOME-COR JETMOUNT?

- The denser foam core provides increased rigidity and warp resistance
- Great for more demanding mounting jobs such as display, signage and framing

WHY CHOOSE FOAM-X RECOVERY?

- Memory core is more resistant to denting
- Edges remain open when die cut
- Economical alternative to competitive foam boards



PRODUCT AVAILABILITY

	Gauges	Facers	Foam	Sizes
Fome-Cor Board	1/8", 3/16", 3/8"	White clay-coated Black	White Black	20" x 30", 24" x 36", 30" x 40", 30" x 42", 32" x 40", 40" x 60", 48" x 72", 48" x 96", 48" x 120", 50"x100", 60" x 96", 60" x 120", custom sizes up to 96" x 120"
Fome-Cor ValuBoard	3/16"	Natural Kraft	White Black	48" x 96", custom sizes up to 96" x 120"
Fome-Cor Acid-Free	1/8", 3/16"	Crème	White	32" x 40", 40" x 60", custom sizes up to 96" x 120"
Fome-Cor Self-Adhesive	3/16"	White clay-coated	White	24" x 36", 32" x 40", 40" x 60", 48" x 72", custom sizes available
Fome-Cor Heat-Activated	3/16"	White clay-coated	White	24" x 36", 32" x 40", 40" x 60", 48" x 96", custom sizes up to 96" x 120"
Fome-Cor JetMount	1/4"	White clay-coated Black	White Black	48" x 96", 60" x 96", custom sizes up to 96" x 120"
Foam-X Recovery	3/16"	White clay-coated	White	24" x 36", 30" x 40", 32" x 40", 40" x 60", 48" x 96", custom sizes up to 96" x 120"

Due to the various facer and foam combinations, please refer to the website for product availability in the desired thickness and size.



800.626.3365
graphicdisplay.com



GATOR®

www.bciimage.com 866 971-1008 bciwideformat@gmail.com

HEAVY-DUTY FOAM BOARD FAMILY

- **Gatorfoam®** has been the industry's leading heavy-duty foam board for more than 30+ years. It is comprised of extruded polystyrene foam bonded between two layers of wood-fiber veneer.
- **Gatorplast®** is comprised of extruded polystyrene foam bonded between two layers of high-impact polystyrene cap sheets.
- **Gatorblanks®** are thick panels of extruded polystyrene foam with no facers.

WHY CHOOSE GATORFOAM?

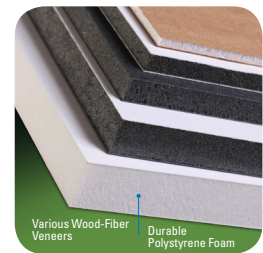
- The original, heavy-duty graphic arts board
- Excellent reputation for digital and screen printing
- Bright White facer is the brightest board of its kind
- Dent and scratch resistant

WHY CHOOSE GATORPLAST?

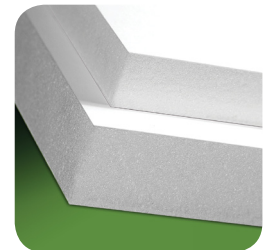
- Smooth, high-impact facers resist warping
- Lightweight and water-resistant
- Vinyl graphics are repositionable

WHY CHOOSE GATORBLANKS?

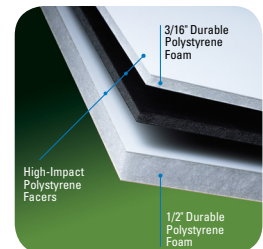
- Perfect for signs, displays and dramatic in-store lettering
- Lightweight yet durable, and easy to cut and form



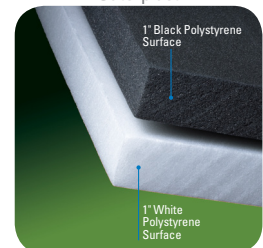
Gatorfoam



Gatorfoam Exterior



Gatorplast



Gatorblanks



GATOR

www.bciimage.com 866 971-1008 bciwideformat@gmail.com

PRODUCT AVAILABILITY

	Gauges	Facers	Foam	Sizes
Gatorfoam	3/16", 3/8", 1/2", 3/4", 1", 1 1/2", 2", Custom thicknesses up to 3" available upon request	Bright White Black Natural	White Black	48" x 96", 50" x 100", 60" x 96", 60" x 120", Custom sheet sizes and facer/foam combinations up to 60" x 120"
NEW! GATORFOAM® BOARD IN 1" GAUGES AND ABOVE IS MADE WITH A TOP GRADE ADHESIVE TO WITHSTAND EXTERIOR APPLICATIONS. TO PROTECT FOAM FROM UV EXPOSURE, IT IS STILL RECOMMENDED TO PAINT THE EDGES.				
Gatorfoam Exterior	1", 1 1/2" Custom thicknesses up to 3" available upon request	Bright White	White	48" x 96"
Gatorplast	3/16", 1/2", 3/4", 1" Custom thicknesses up to 3" available upon request	White Black	White Black	48" x 96", 50" x 100", 60" x 120", Custom sheet sizes and facer/foam combinations up to 60" x 120"
Gatorblanks	1", 2" Custom thicknesses up to 3" available upon request	White Black	White Black	48" x 96"

Due to the various facer and foam combinations, please refer to the website for product availability in the desired thickness and size.



800.626.3365
graphicdisplay.com



This product guide provides only general application information and is not intended to include all potential product uses. No express or implied warranties are contained herein.
Fome-Cor®, Sintra®, Gator® and Dibond® are registered trademarks of 3A Composites USA, Inc. FiberMate™, e-pvc™ and e-panel™ are trademarks of 3A Composites USA, Inc. ©3A Composites USA, Inc. 2013. All Rights Reserved.

the brand names you know you can count on for all your graphic display needs

PRODUCT CATEGORY	SHEET CONSTRUCTION	WHY CHOOSE THIS MATERIAL	GAUGES / COLORS	MANUFACTURED SHEET SIZES*	APPLICATIONS	FABRICATION	FORMING	FLAMMABILITY	OUTDOOR USAGE
FOME-COR VALUBOARD Paper-faced Foam Board	•Extruded polystyrene foam with natural kraft facers	•Cost-effective alternative to corrugated cardboard •Provides a smooth surface for mounting with no flute marks	3/16" Natural Kraft facers - White foam 3/16" Natural Kraft facers - Black foam	48" x 96" 48" x 96"	•POP Displays •Exhibits & Kiosks •Framing •Signage - interior	•Mounting •Knife Cutting •Die Cutting / Punching •Embossing	•Relief cuts or scores required for forming	•Combustible	•Not Recommended
FOME-COR BOARD Paper-faced Foam Board	•Extruded polystyrene foam with clay-coated white or black paper facers	•Original graphic arts foam board •Great reputation for performance •Broad selection of specialty products •Uniquely embossable •Excellent delivery time on special cut orders up to 8' x 10' •Edges remain closed when die-cut	1/8" White clay-coated facers - White foam 3/16" White clay-coated facers - White foam 3/8" White clay-coated facers - White foam 3/16" White clay-coated facers - Black foam 3/16" White clay-coated & Black facers - varied foam 3/16" Black facers - Black foam 3/8" Black facers - Black foam	32" x 40", 40" x 60", 48" x 96" 20" x 30", 24" x 36", 30" x 40", 30" x 42", 32" x 40", 48" x 96", 50" x 100", 60" x 120" 40" x 60", 48" x 72", 48" x 96", 48" x 120", 60" x 96" 40" x 60", 48" x 96" Special cuts available; minimum quantities apply 48" x 96" 32" x 40", 40" x 60", 48" x 96" Special cuts available; minimum quantities apply	•POP Displays •Exhibits & Kiosks •Framing •Signage - interior	•Mounting •Digital Printing •Screen Printing •Painting ¹ •Knife Cutting •Die Cutting / Punching •Embossing	•Relief cuts or scores required for forming	•Combustible	•Not Recommended
FOAM-X RECOVERY Paper-faced Foam Board	•"Memory retaining" polystyrene foam with clay-coated paper facers	•Memory core is more resistant to denting •Edges remain open when die cut •Economical alternative to competitive foam boards	3/16" White clay-coated facers - White foam	24" x 36", 30" x 40", 32" x 40", 40" x 60", 48" x 96"	•POP Displays •Exhibits & Kiosks •Framing •Signage - interior	•Mounting •Digital Printing •Screen Printing •Painting ¹ •Knife Cutting •Die Cutting / Punching	•Relief cuts or scores required for forming	•Combustible	•Not Recommended
FOME-COR ACID-FREE Paper-faced Foam Board	•Extruded polystyrene foam with acid-free paper facers that meet Library of Congress standards for conservation framing	•Perfect for the archival preservation of valuable art and photographs •No additional backing is required, saving time and framing materials	1/8" Creme-colored facers - White foam 3/16" Creme-colored facers - White foam	32" x 40", 40" x 60" 32" x 40", 40" x 60"	•Framing - Archival	•Mounting ² •Knife Cutting •Die Cutting / Punching	•Relief cuts or scores required for forming	•Combustible	•Not Recommended
FOME-COR SELF-ADHESIVE Paper-faced Foam Board	•Extruded polystyrene foam with clay-coated paper facers, one of which is covered with pressure sensitive adhesive	•Eliminates the use of pressure-sensitive adhesive stock •Available in repositionable Low-Tack (LT) or immediate bonding High-Tack (HT) •HT identified by red release liner and LT identified by blue release liner •Simply peel back the release facer as you position the graphic on the sticky surface	3/16" HT: White clay-coated facers - White foam 3/16" LT: White clay-coated facers - White foam	24" x 36", 48" x 72" 24" x 36", 32" x 40", 40" x 60"	•POP Displays •Exhibits & Kiosks •Framing •Signage - interior	•Mounting •Knife Cutting •Die Cutting / Punching •Embossing	•Relief cuts or scores required for forming	•Combustible	•Not Recommended
FOME-COR HEAT-ACTIVATED Paper-faced Foam Board	•Extruded polystyrene foam with clay-coated paper facers, one of which is covered with heat-activated adhesive	•Eliminates the use of hot melt tissue stock •The adhesive is activated with low temperature settings for a quick, damage-free mount •Can be used on a heated mechanical or vacuum dry mount press, or with a heated roller laminator	3/16" White clay-coated facers - White foam	24" x 36", 32" x 40", 40" x 60", 48" x 96"	•POP Displays •Exhibits & Kiosks •Framing •Signage - interior	•Mounting •Knife Cutting •Die Cutting / Punching •Embossing	•Relief cuts or scores required for forming	•Combustible	•Not Recommended
FOME-COR JETMOUNT Paper-faced Foam Board	•Denser extruded polystyrene foam with clay-coated paper facers	•Denser foam core provides increased rigidity and warp resistance •Great for more demanding mounting jobs such as display, signage and framing	1/4" White clay-coated facers - White foam 1/4" Black facers - Black foam	48" x 96", 60" x 96" 48" x 96", 60" x 96"	•POP Displays •Exhibits & Kiosks •Framing •Signage - interior	•Mounting •Digital Printing •Screen Printing •Painting ¹ •Knife Cutting •Die Cutting / Punching	•Relief cuts or scores required for forming	•Combustible	•Not Recommended
e-pvc Expanded PVC	•Low-density, lighter and less rigid expanded PVC board	•Economical PVC alternative for less-demanding applications	3mm, 6mm Bright White 10mm, 12.7 Bright White 3mm, 6mm Black 12.7mm Black	48" x 96", 50" x 100", 60" x 120" 48" x 96" 48" x 96", 50" x 100", 60" x 120" 48" x 96"	•POP Displays •Exhibits & Kiosks •Framing •Framing - Archival •Signage - interior •Signage - exterior	•Mounting ³ •Repositioning Vinyl •Digital Printing •Screen Printing •Painting •Knife Cutting ⁴ •Saw Cutting •Routing •Die Cutting / Punching ⁵ •Forming Curves	•Thermoplastic; heat required for all forming •Drape forming •Vacuum forming •Free forming •Line bending	•Not Tested	•Suitable for outdoor usage
SINTRA Expanded PVC	•Moderately expanded closed-cell PVC in a homogeneous sheet with a low-gloss matte finish	•Sintra Bright White is now the brightest and whitest PVC board on the market •The trusted brand leader by which all others are measured •Lightweight yet rigid and durable •Ease of machinability •Easily formed into just about any shape imaginable using wood and foam board fabrication techniques •Heat formable and chemical resistant •Superior dent and scratch resistance	1mm Bright White 2mm Bright White 3mm Bright White 6mm Bright White 2mm Black 3mm, 6mm Black 3mm, 6mm Gray, Light Gray 3mm, 6mm Colors** **Dark Red, Bright Yellow, Dark Green, Dark Blue Custom colors available	48" x 96" 48" x 96", 60" x 120" 1M x 96", 48" x 96", 48" x 120", 50" x 100", 60" x 96", 60" x 120", 2M x 120" 48" x 96", 48" x 120", 50" x 100", 60" x 120", 2M x 120" 48" x 96" 48" x 96", 48" x 120", 60" x 120" 48" x 96" 48" x 96"	•POP Displays •Exhibits & Kiosks •Framing •Framing - Archival •Signage - interior •Signage - exterior	•Mounting ³ •Repositioning Vinyl •Digital Printing •Screen Printing •Painting •Knife Cutting ⁴ •Saw Cutting •Routing •Die Cutting / Punching ⁵ •Forming Curves	•Thermoplastic; heat required for all forming •Drape forming •Vacuum forming •Free forming •Line bending	•Self extinguishing •Class 1 or Class A in gauges thinner than 5mm •UL 94V-0 •UL 94 5-V	•6mm gauge or thicker should be used for stand alone outdoor applications •Colors which can be used outside include Bright White, Black, Gray and Light Gray
FIBERMATE Wood Fiber Panel	•Wood fiber	•Eco-Finish coating designed to provide excellent ink and paint adhesion on both sides allowing for double-sided printing or application •100% recyclable in either "wood" or "paper" waste stream (assuming printing ink or mounting material is recyclable)	3.2mm White Water Based UV Coating 5.5mm White Water Based UV Coating	49" x 97" 49" x 97"	•POP Displays •Exhibits & Kiosks •Framing •Signage - interior	•Mounting •Digital Printing •Screen Printing •Painting •Saw Cutting •Routing	•Cannot form	•Class III	•Not Recommended
GATORBLANKS Heavy-duty Foam Board	•Thick panels of extruded polystyrene foam with no facers	•Perfect for signs, displays and dramatic in-store lettering •Lightweight yet durable, and easy to cut and form	1" & 2" White foam 1" & 2" Black foam	48" x 96" 48" x 96"	•POP Displays •Exhibits & Kiosks •Signage - interior •Signage - exterior	•Mounting •Painting ¹ •Knife Cutting •Saw Cutting •Routing	•Cannot form	•Combustible	•Recommended only if sheet is painted to protect foam from UV exposure
GATORPLAST Heavy-duty Foam Board	•Extruded polystyrene foam bonded between two layers of high-impact polystyrene cap sheets	•Smooth, high impact facers resist warping •Lightweight and water-resistant •Vinyl graphics are repositionable	3/16", 1/2", 3/4", 1", in; White facers - White foam Black facers - Black foam	48" x 96", 50" x 100", 60" x 120" 48" x 96", 50" x 100", 60" x 120"	•POP Displays •Exhibits & Kiosks •Signage - interior	•Mounting •Repositioning Vinyl •Digital Printing •Screen Printing •Painting ¹ •Knife Cutting •Saw Cutting •Routing •Die Cutting / Punching ⁵	•Cannot form	•Combustible	•Not Recommended
NEW! GATORFOAM® BOARD IN 1" GAUGES AND ABOVE IS MADE WITH A TOP GRADE ADHESIVE TO WITHSTAND EXTERIOR APPLICATIONS. TO PROTECT FOAM FROM UV EXPOSURE, IT IS STILL RECOMMENDED TO PAINT THE EDGES.									
GATORFOAM Heavy-duty Foam Board	•Extruded polystyrene foam bonded between two layers of wood-fiber veneer	•The original, heavy-duty graphic arts board •Unparalleled rigidity •Excellent reputation for digital and screen printing •Bright White facer is the brightest board of its kind •Dent and scratch resistant	3/16", 3/8", 1/2", 3/4", 1", 1-1/2", 2" in; Bright White facers - White foam Bright White facers - Black foam Bright White & Black facers - Black foam Black facers - Black foam Natural facers - White foam	48" x 96", 50" x 100", 60" x 96", 60" x 120" 48" x 96", 60" x 120" 48" x 96", 60" x 120" 48" x 96", 60" x 120" 48" x 96", 60" x 120"	•POP Displays •Exhibits & Kiosks •Framing •Signage - interior •Signage - exterior ⁸	•Mounting •Digital Printing •Screen Printing •Painting ¹ •Saw Cutting •Routing	•Cannot form	•Combustible	•Recommended only if sheet is painted to protect foam from UV exposure •Black Gatorfoam is not recommended for exterior use
e-panel Aluminum Composite Material (ACM)	•Two pre-painted sheets of 0.008" aluminum with a solid polyethylene core; manufactured in China	•Recommended for flat panel applications	2mm White / White 3mm White / White 4mm White / White 3mm White / Mill Finish (Aluminum) 3mm Brushed Silver / Mill Finish (Aluminum) 6mm White / Brushed Silver	48" x 96" 48" x 96", 60" x 120" 48" x 96" 48" x 96" 48" x 96"	•POP Displays •Exhibits & Kiosks •Framing •Framing - Archival •Signage - interior •Signage - exterior	•Mounting ³ •Repositioning Vinyl •Digital Printing •Screen Printing •Painting •Saw Cutting •Routing •Die Cutting / Punching ⁵	•Recommended for flat panel applications	•Not Tested	•Suitable for outdoor usage
DIBOND Aluminum Composite Material (ACM)	•Two pre-painted sheets of 0.012" aluminum with a solid polyethylene core	•Flattest panel on the market •Superior surface protects expensive digital and screen-printed graphics •Provides excellent durability in outdoor applications •Won't bow or oil can •Approximately one half the weight of solid aluminum sheet •Can be routed and returned to add dimension or roll-formed to deliver sweeping curves	2mm White / White 3mm White / White 4mm White / White 3mm Black / White 3mm Dark Bronze / Fine Silver 3mm Hunter Red / Caution Yellow 3mm Dark Green / Ultra Marine Blue 3mm Brushed Silver / Fine Silver 3mm Brushed Bronze / White 3mm Brushed Copper / White 3mm Brushed Stainless / White Custom colors available	48" x 96", 48" x 120" 48" x 96", 60" x 120" 48" x 96" 48" x 96", 48" x 120" 48" x 96" 48" x 96" 48" x 96" 48" x 96" 48" x 96" 48" x 96" 48" x 96" 48" x 96"	•POP Displays •Exhibits & Kiosks •Framing •Framing - Archival •Signage - interior •Signage - exterior •Signage - structural ⁹	•Mounting ³ •Repositioning Vinyl •Digital Printing •Screen Printing •Painting •Saw Cutting •Routing •Die Cutting / Punching ⁵ •Forming Curves	•Easily curved with pyramid roller, hydraulic press or clamped pipe •Angles can be achieved with relief rout and return	•Self extinguishing •Class 1 or Class A in gauges thinner than 5mm •UL 94V-0	•Ideal for outdoor usage •No oil canning •Baked on, coil-coated paint finishes

General Note: Trialing is recommended to ensure suitability for the proposed application and fabrication before full-scale commercialization. All product information provided in this document is accurate at time of print and subject to change. Please refer to the website for the most up-to-date information.
¹ Do not expose core to solvent-based paints
² Archival conservation mounting
³ Cold mounting techniques only
⁴ May be knife cut up to 3mm
⁵ May be die cut in gauges up to 5mm or 3/16"
⁶ Punch press die set is required, not a steel rule die
⁷ Face priming will provide better results
⁸ Black Gatorfoam is not recommended for outdoor use
⁹ Applications such as workzone signage, canopies, pylons and column covers

www.bciimage.com 866 971-1008
bcwideformat@gmail.com

PROFILES™

PROFILES™ ALUMINUM EXTRUSIONS USED FOR JOINING 3MM RIGID SUBSTRATES

The ideal, cost-effective solution for framing and connecting 3mm rigid substrates in medium- and long-term applications, Profiles™ can help give your projects an edge.

WHY CHOOSE PROFILES?

- Significantly reduces fabrication time required to join 3mm rigid substrates
- Provides a finished look for exposed edges
- Material is anodized, which resists scratching and environmental wear and tear
- H-Shaped Profiles include a centering "v-groove" for self-aligned drilling

PRODUCT AVAILABILITY

Profiles Shapes:

- U-Shaped: for framing and enclosing an otherwise exposed edge
- L-Shaped: for joining two substrates in a "corner" connection
- H-Shaped: for joining two substrates in a "flat" or "side-by-side" connection

Colors:

- All Profiles have a Class II clear anodized finish

Lengths:

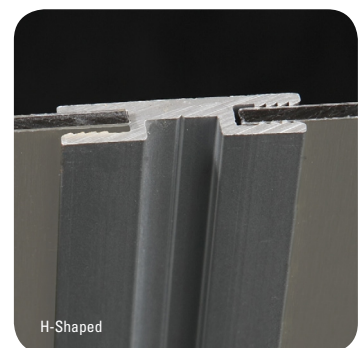
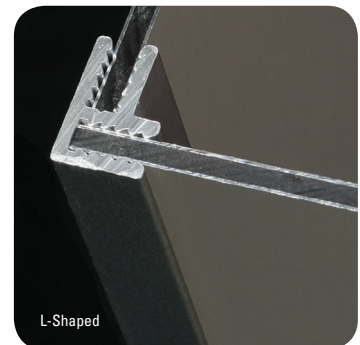
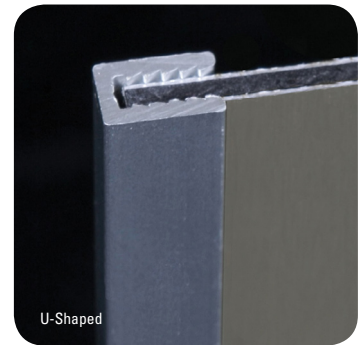
- Each is available in 98"

Fabrication/Application Information:

- Profiles may be cut to length with a table or circular saw
- Great for signs, exhibits or POP applications

Packaging:

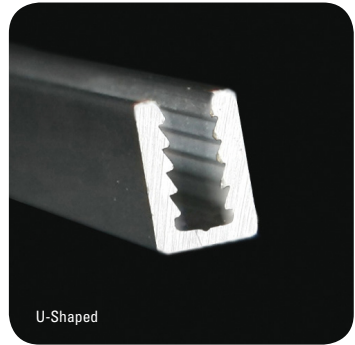
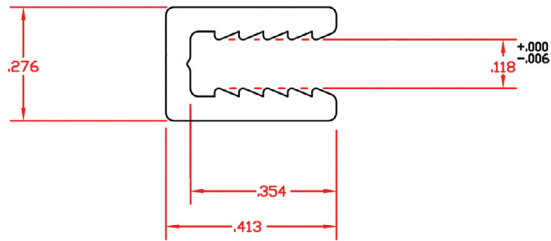
- Each length is individually wrapped in protective plastic



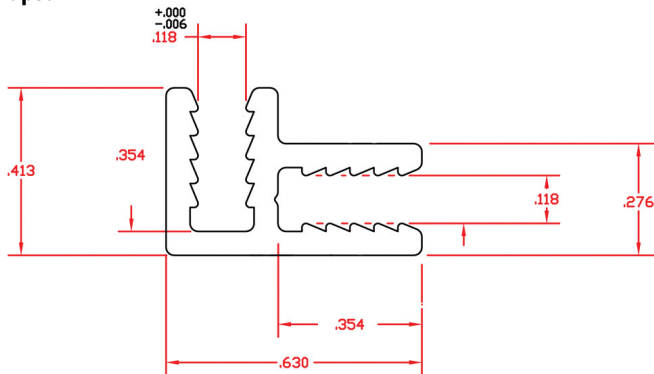
PROFILES™

www.bciimage.com 866 971-1008
 bciwideformat@gmail.com

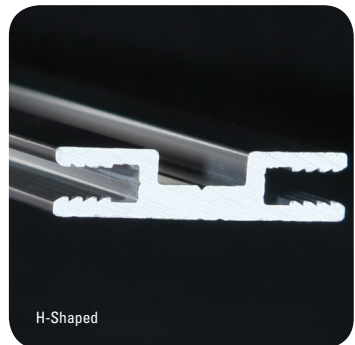
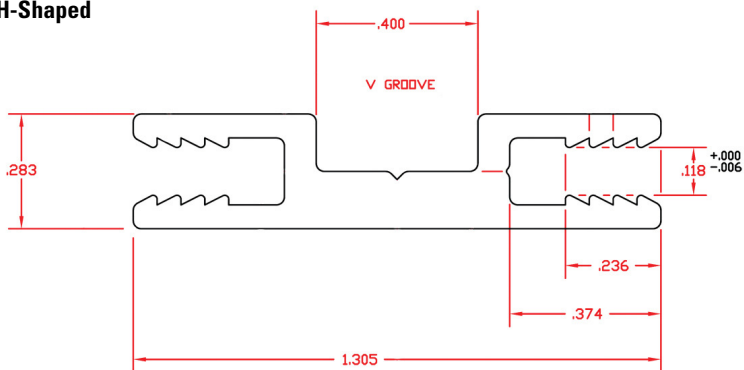
U-Shaped



L-Shaped



H-Shaped



800.626.3365
 graphicdisplay.com



This product guide provides only general application information and is not intended to include all potential product uses. No express or implied warranties are contained herein.
 Fome-Cor®, Sintra®, Gator® and Dibond® are registered trademarks of 3A Composites USA, Inc. FiberMate™, e-pvc™ and e-panel™ are trademarks of 3A Composites USA, Inc. ©3A Composites USA, Inc. 2013. All Rights Reserved.

www.bciimage.com 866 971-1008
bcwideformat@gmail.com

SINTRA®

FOAMED PVC FAMILY

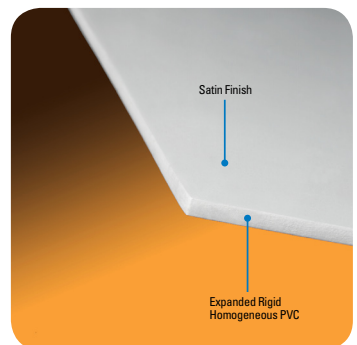
- **Sintra®** has been the industry's leading PVC board for more than 20+ years. It is comprised of moderately expanded closed-cell polyvinyl chloride (PVC) in a homogenous sheet with a low-gloss matte finish.
- **e-pvc™** is a low-density, lighter, and less rigid expanded PVC board.

WHY CHOOSE SINTRA?

- Sintra Bright White is now the brightest and whitest PVC board on the market
- The trusted brand leader by which all others are measured
- Lightweight yet rigid and durable
- Ease of machinability
- Easily formed into just about any shape imaginable using wood and foam board fabrication techniques
- Heat formable and chemical resistant
- Superior dent and scratch resistance

WHY CHOOSE E-PVC?

- Economical PVC alternative for less-demanding applications



www.bciimage.com 866 971-1008
 bciwideformat@gmail.com



PRODUCT AVAILABILITY

	Gauges	Colors	Sizes
e-pvc	3mm, 6mm, 10mm, 12.7mm	Bright White Black	48" x 96", 50" x 100", 60" x 120" custom sizes available
Sintra	1mm, 2mm, 3mm, 6mm	Bright White Black Gray Light Gray Dark Red Bright Yellow Dark Green Dark Blue Custom Colors	From 1M (39.37") x 96" to 2M (79.92") x 120" custom sizes available

Due to multiple product configurations, please refer to the website for product availability in the desired thickness and size.



800.626.3365
 graphicdisplay.com



SMART-X®

THE DISTINCTIVELY UNIQUE LIGHTWEIGHT FOAM BOARD

- **Smart-X®** is a lightweight, all-plastic sheet material with surfaces of UV and weather resistant solid polystyrene (HIPS) and a core of expanded polystyrene that is completely moisture-resistant. Moreover, Smart-X® is a mono-material composite (no adhesive between core and cover layers) made from 100% polystyrene and, therefore, perfectly meets the demand for ecological materials.

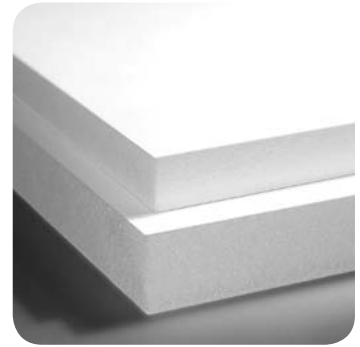
WHY CHOOSE SMART-X?

- Very rigid with very low weight
- Brilliant printing results with direct digital printing, offering vibrant colors even for exterior applications
- Very good resistance to weathering – with high UV stability and humidity resistance
- Low resistance during routing or milling which makes this material perfect for processing signs, displays, and dramatic in-store lettering

(Please contact technical services for exterior use recommendations)

SMART-X – THE GREEN ASPECT

- Smart-X® with a homogeneous compound is 100% recyclable
- About 95% of the production waste of Smart-X® is collected and recycled on-site



PRODUCT AVAILABILITY

	Gauges	Facers	Foam	Size
Smart-X®	3/16" (5mm), 3/8" (10mm) 1/2" (13mm), 3/4" (19mm)	White	White	48" x 96"



800.626.3365
 graphicdisplay.com

